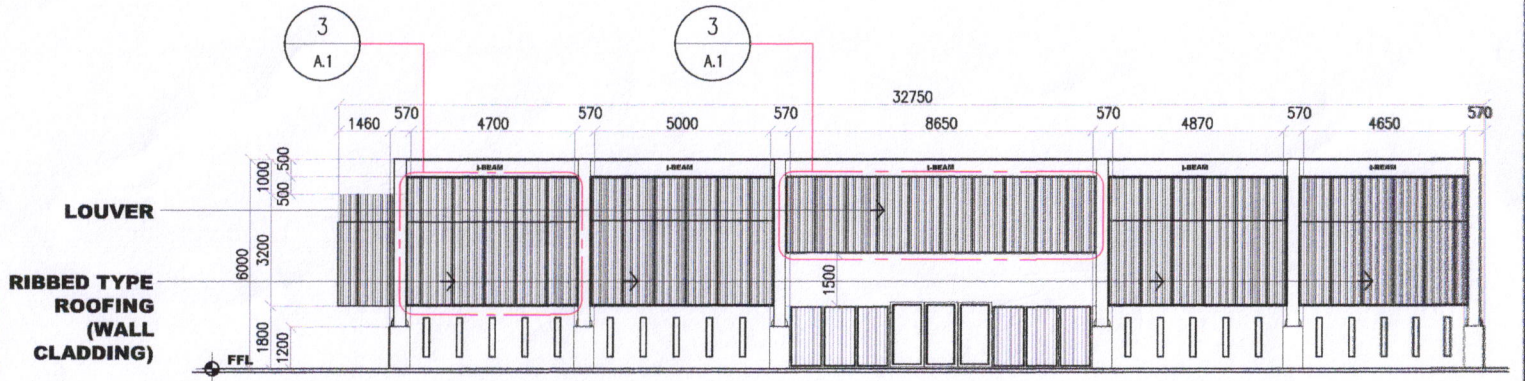
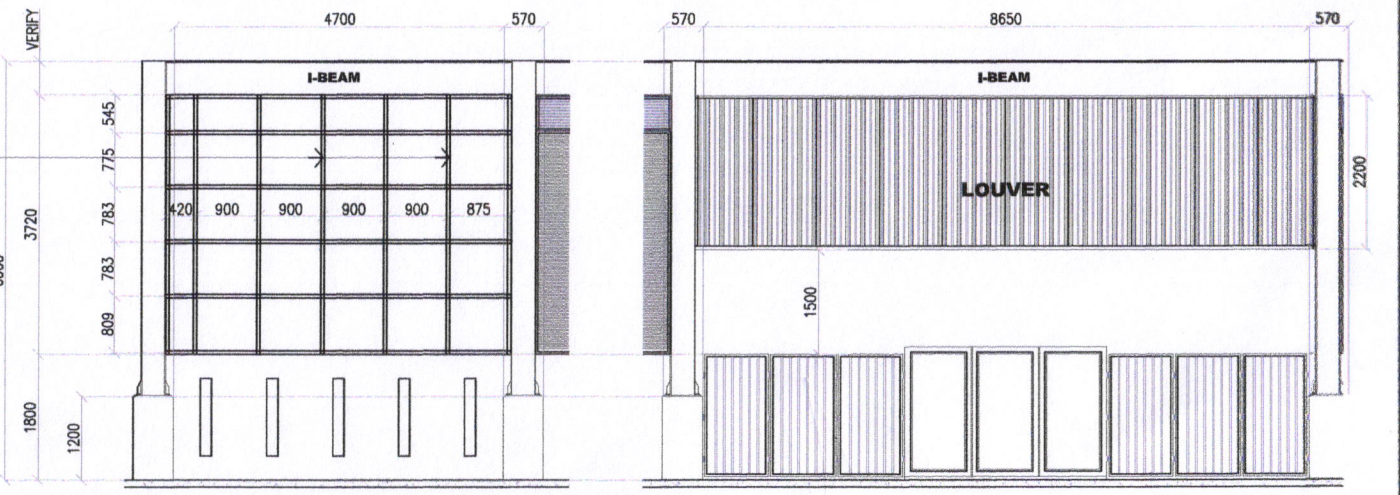


1 FLOOR PLAN
SCALE 1:400M


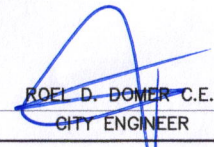
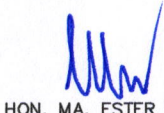


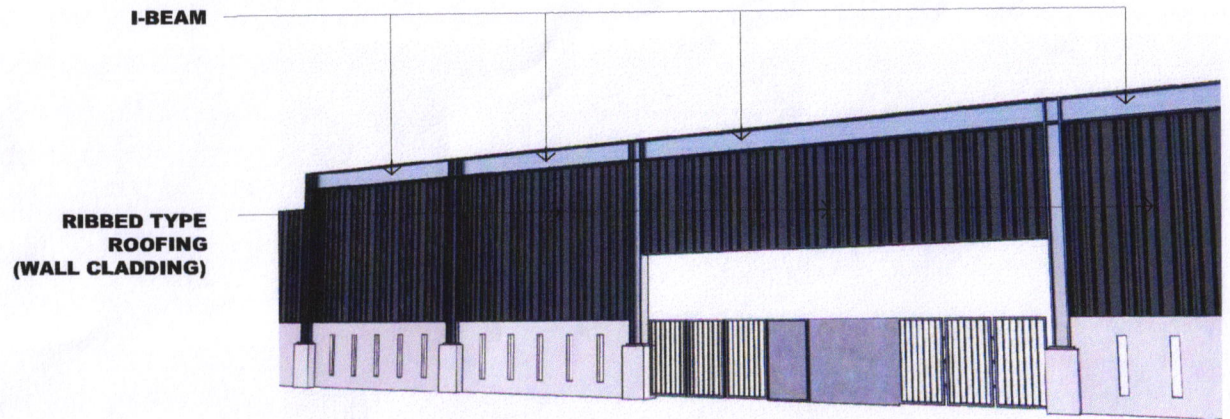
2 ELEVATION
SCALE 1:200M

2"x3" TUBULAR FRAMING SPACED AS SHOWN

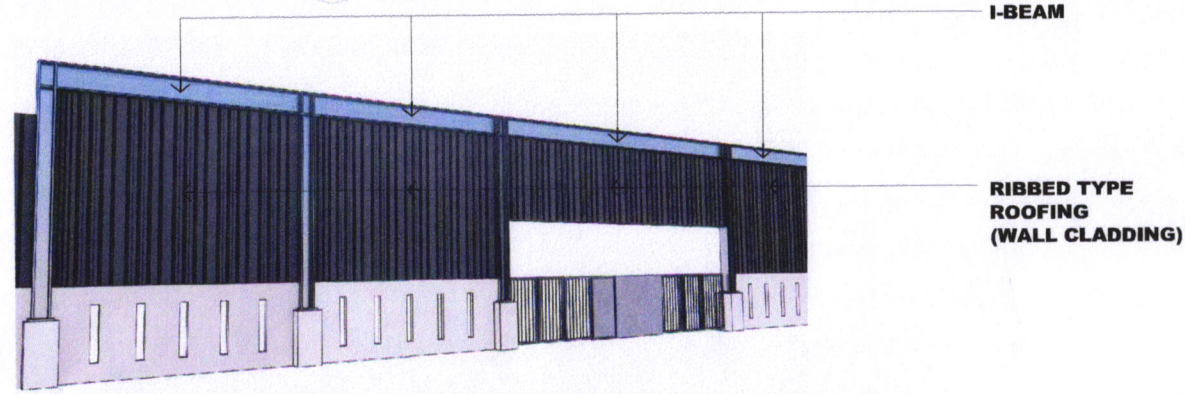


3 WALL FRAMING DETAIL
SCALE 1:100M


 <p>SORSOGON CITY CITY ENGINEER'S OFFICE</p>	<p>TITLE: REPAIR AND IMPROVEMENT OF MULTI-PURPOSE HALL (EMERGENCY OPERATION CENTER)</p> <p>LOCATION: BRGY. POBLACION, BACON DISTRICT, SORSOGON CITY</p>	<p>DRAWN: <i>maria lara j. malabuena, uap</i> ARCHITECT I</p>	<p>RECOMMENDED BY:  ROEL D. DIMER C.E. CITY ENGINEER</p>	<p>APPROVED BY:  HON. MA. ESTER E. HAMOR CITY MAYOR</p>	<p>SHEET NO. 2 A.1</p>
--	--	---	---	--	--

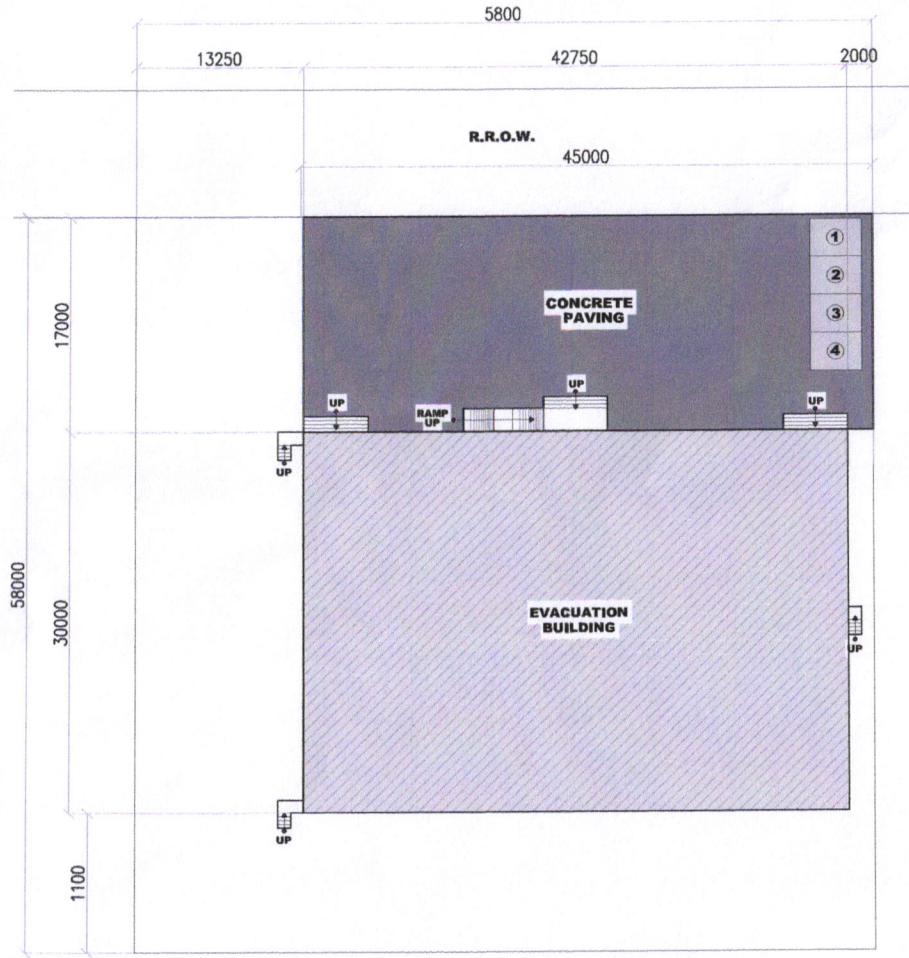


1
A2
DETAIL 1
SCALE NTS

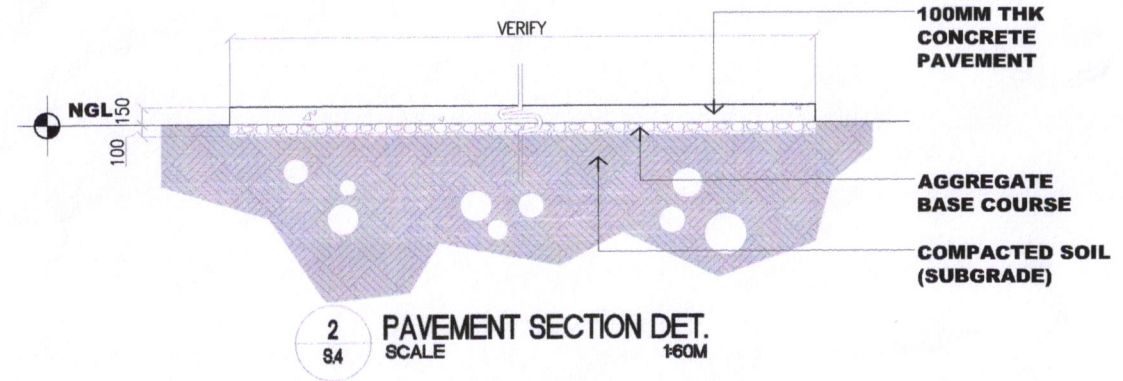


2
A2
DETAIL 2
SCALE NTS

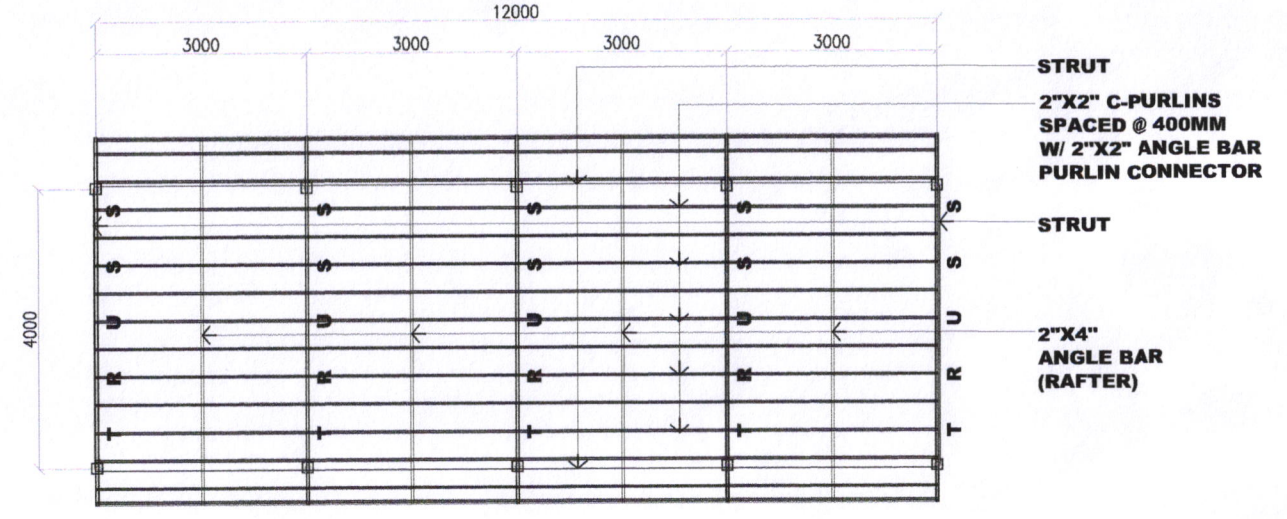
 <p>SORSOGON CITY CITY ENGINEER'S OFFICE</p>	<p>TITLE: REPAIR AND IMPROVEMENT OF MULTI-PURPOSE HALL (EMERGENCY OPERATION CENTER)</p> <p>LOCATION: BRGY. POBLACION, BACON DISTRICT, SORSOGON CITY</p>	<p>DRAWN: <i>maria lara j. malabuena, uaf</i> ARCHITECT I</p>	<p>RECOMMENDED BY: ROEL D. DOMER, C.E. CITY ENGINEER</p>	<p>APPROVED BY: HON. MA. ESTER E. HAMOR CITY MAYOR</p>	<p>SHEET NO. 2 A.2</p>
--	--	--	---	---	-------------------------------------




1 PAVEMENT LAYOUT PLAN
SCALE 1:550M

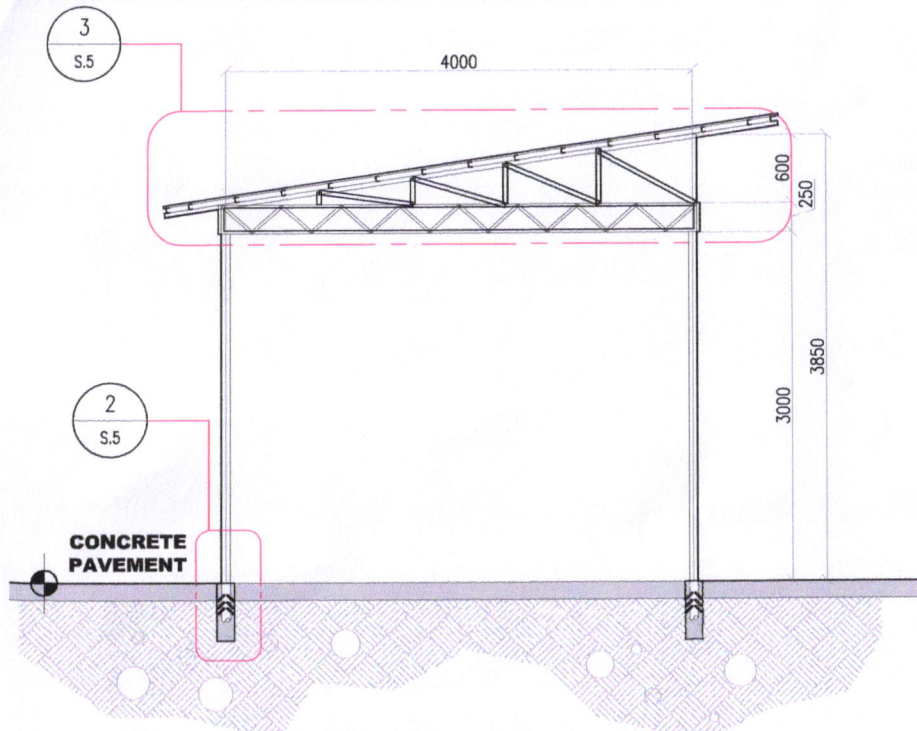


2 PAVEMENT SECTION DET.
SCALE 1:60M

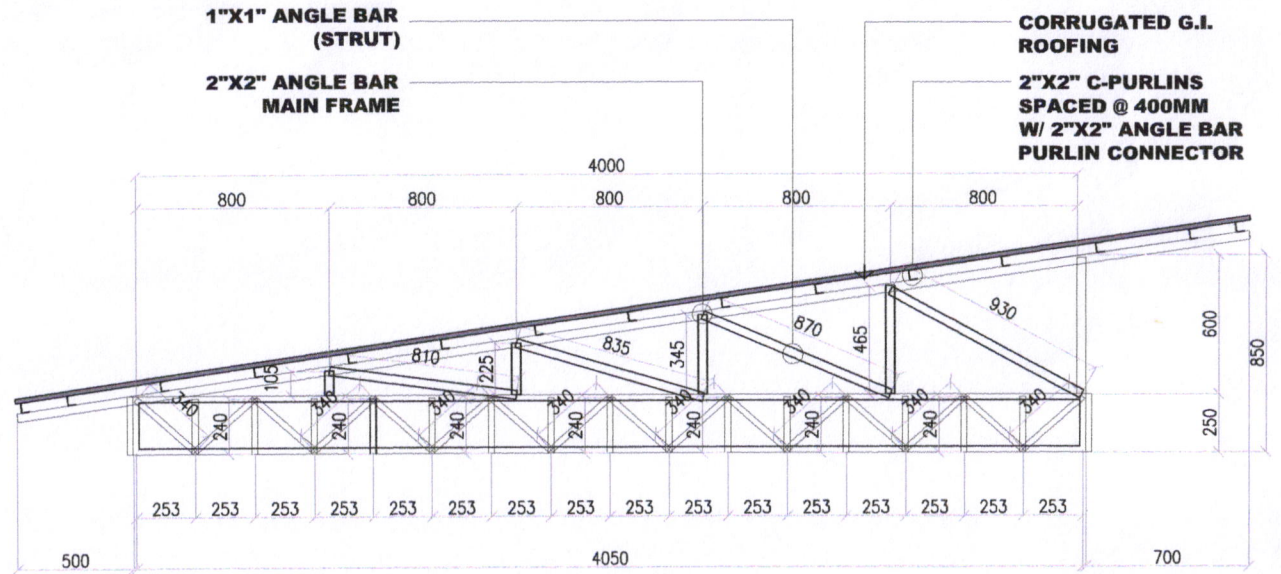


3 ROOF FRAMING PLAN (COVERED PARKING)
SCALE 1:60M

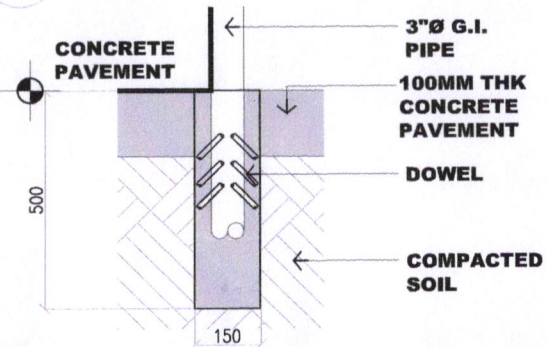
 <p>SORSOGON CITY CITY ENGINEER'S OFFICE</p>	TITLE:	DRAWN:	RECOMMENDED BY:	APPROVED BY:	SHEET NO.
	<p>REPAIR AND IMPROVEMENT OF MULTI-PURPOSE HALL (EMERGENCY OPERATION CENTER)</p> <p>LOCATION: BRGY. POBLACION, BACON DISTRICT, SORSOGON CITY</p>	<p><i>maria lara j. malabuena, uap</i> ARCHITECT I</p>	<p>ROEL D. DOMER, C.E. CITY ENGINEER</p>	<p>HON. MA. ESTER E. HAMOR CITY MAYOR</p>	<p>5 S.4</p>



1 SECTION DET. (COVERED PARKING)
SCALE 1/85



3 FRAMING SECTION DET.
SCALE 1/85



2 FOUNDATION DET.
SCALE 1/85

TITLE:	DRAWN:	RECOMMENDED BY:	APPROVED BY:	SHEET NO.
<p>IMPROVEMENT OF MULTI-PURPOSE HALL (EMERGENCY OPERATION CENTER)</p> <p>LOCATION: BRGY. POBLACION, BACON DISTRICT, SORSOGON CITY</p>	<p><i>maria lara j. malabuena, uap</i> ARCHITECT I</p>	<p>ROEL D. DOMER, C.E. CITY ENGINEER</p>	<p>HON. MA. ESTER E. HAMOR CITY MAYOR</p>	<p>5 S.4</p>



SORSOGON CITY
CITY ENGINEER'S OFFICE