
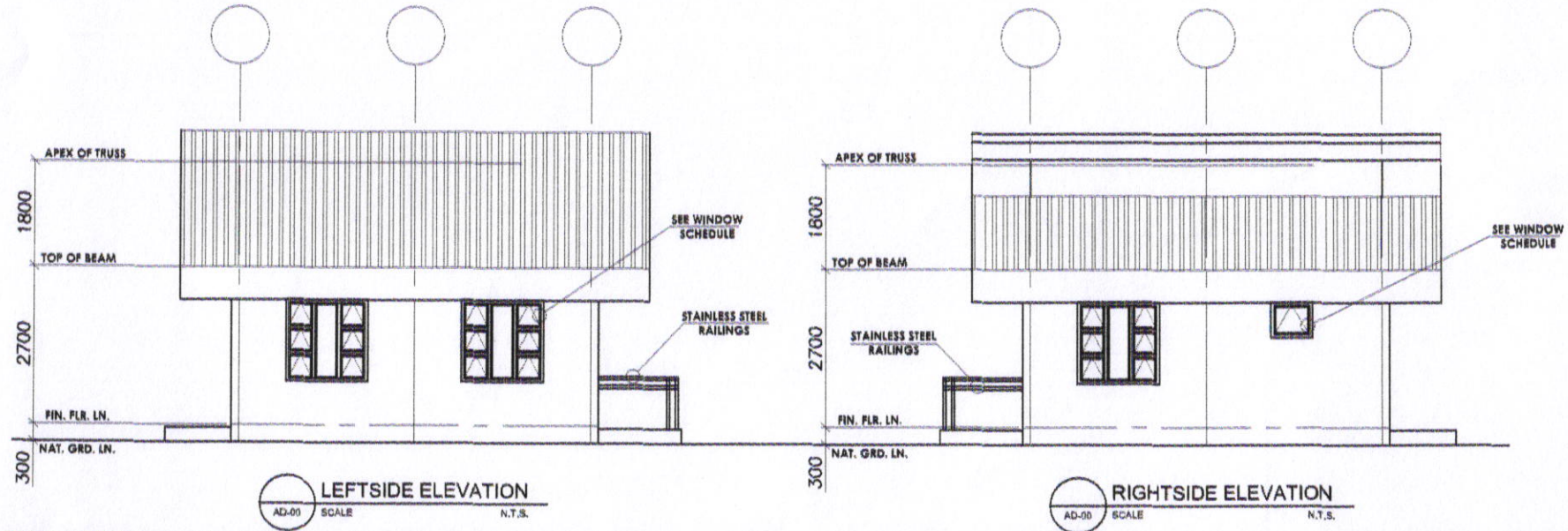
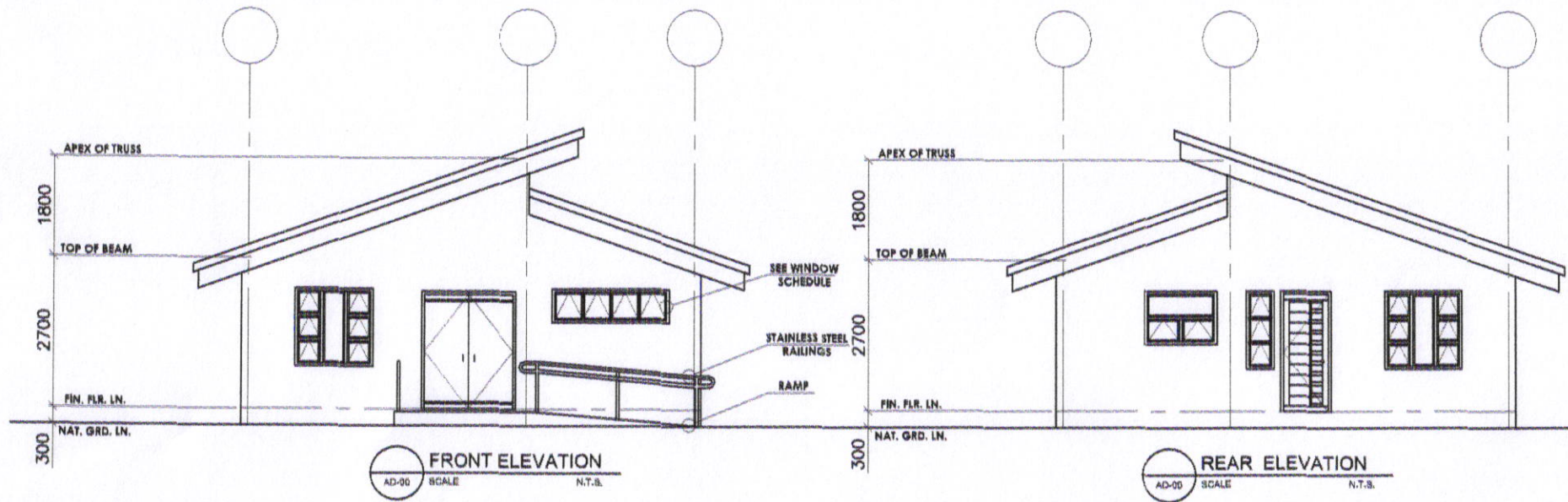



| | | | | | | |
|---|---|---|---------------------------------------|---------------------------------------|------------------------|------------|
|  <p>SORSOGON CITY CITY ENGINEER'S OFFICE</p> | PROJECT TITLE: | DRAWN BY: | RECOMMENDING APPROVAL: | APPROVED BY: | SHEET CONTENT: | SHEET NO.: |
| | CONSTRUCTION / IMPROVEMENT OF HEALTH CENTER | | | | A S - S H O W N | |
| | LOCATION : BRGY. PANLAYAAN WEST DIST. SORSOGON CITY | MINDEE MAE A. GONZALGO ARCHITECTURAL ASST. | ROEL D. DOMER, CDRMP CITY ENGINEER | HON. MA. ESTER E. HAMOR CITY MAYOR | | |

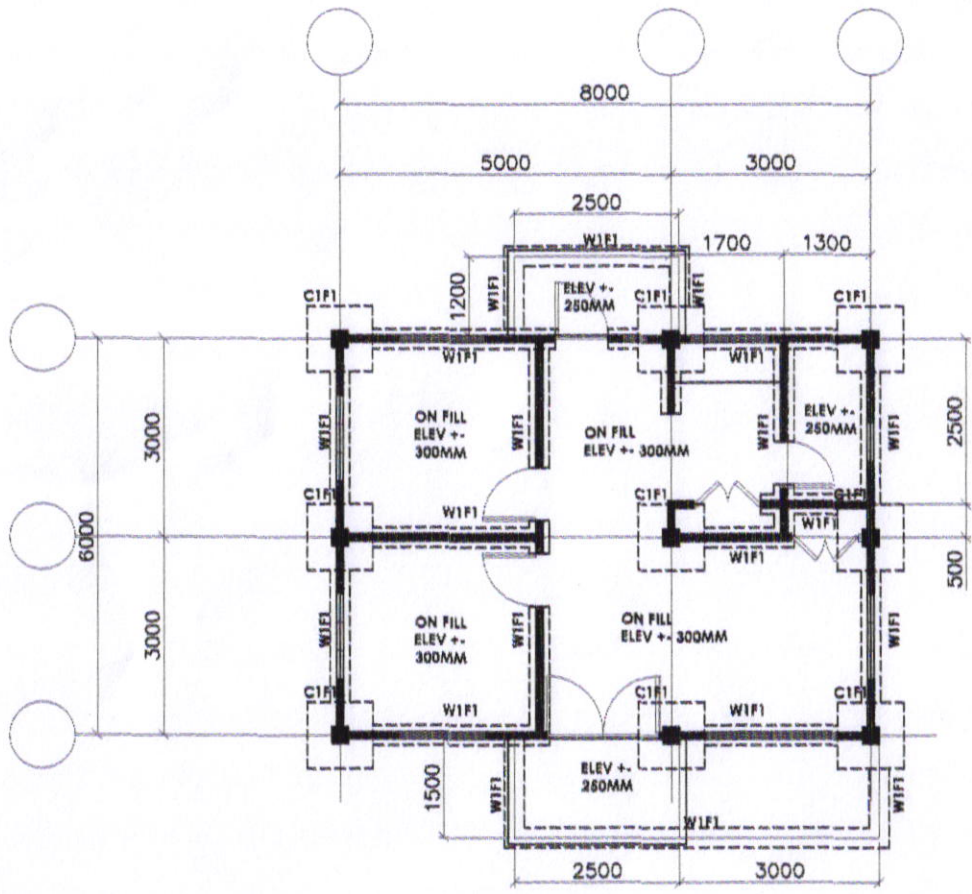


| | | | | | | |
|---|---|---|---|---------------------------------------|----------------|-----------|
|  <p>SORSOGON CITY CITY ENGINEER'S OFFICE</p> | PROJECT TITLE: | DRAWN BY: | RECOMMENDING APPROVAL: | APPROVED BY: | SHEET CONTENT: | SHEET NO. |
| | CONSTRUCTION / IMPROVEMENT OF HEALTH CENTER | | | | AS - SHOWN | |
| | LOCATION : BRGY. PANLAYAAN WEST DIST. SORSOGON CITY | MINDEE MAE A. GONZALGO ARCHITECTURAL ASST. | ROEL D. DOMER, P. ERMP CITY ENGINEER | HON. MA. ESTER E. HAMOR CITY MAYOR | | |

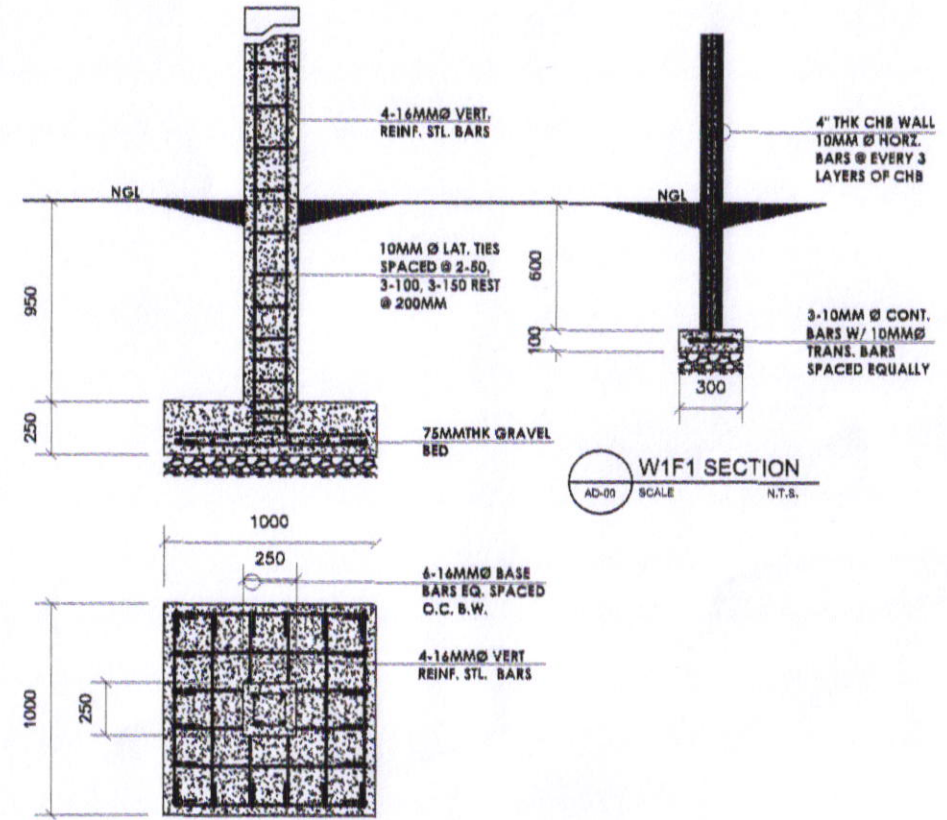
| | | | | |
|--|--|--|--|---|
| | | | | |
| D1 | D2 | D3 | D4 | |
| DOUBLE SWING GLASS DOOR ON STANDARD POWDER COATED ALUMINUM FRAME | SINGLE SWING TYPE WOOD PANEL DOOR | SINGLE SWING TYPE WOOD HOLLOW CORE LITE FLUSH DOOR | SINGLE SWING TYPE MARINE PLY. HOLLOW CORE FLUSH DOOR | |
| 1 SET | 1 SET | 2 SET | 1 SET | |
| ENTRANCE | SERVICE AREA | TREATMENT ROOM/ OFFICE | T&B | |
| | | | | |
| W1 | W1-A | W2 | W3 | W4 |
| POWDER COATED ALUMINUM AWNING TYPE WINDOW | POWDER COATED ALUMINUM AWNING TYPE HIGH WINDOW | POWDER COATED ALUMINUM AWNING TYPE WINDOW | POWDER COATED ALUMINUM AWNING TYPE WINDOW | POWDER COATED ALUMINUM AWNING TYPE WINDOW |
| 5 SETS | 1 SET | 1 SET | 1 SET | 1 SET |

DOORS & WINDOW SCHEDULE
AD-00 SCALE N.T.S.

| | | | | | | |
|---|---|---|---|---------------------------------------|------------------------|-----------|
| <p>SORSOGON CITY CITY ENGINEER'S OFFICE</p> | PROJECT TITLE: | DRAWN BY: | RECOMMENDING APPROVAL: | APPROVED BY: | SHEET CONTENT: | SHEET NO. |
| | CONSTRUCTION / IMPROVEMENT OF HEALTH CENTER | | | | A S - S H O W N | |
| | LOCATION : BRGY. PANLAYAAN WEST DIST. SORSOGON CITY | MINDEE MAE A. GONZALGO ARCHITECTURAL ASST. | ROEL D. DAMER, C.E., RMP CITY ENGINEER | HON. MA. ESTER E. HAMOR CITY MAYOR | | |

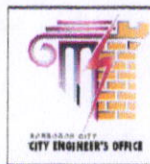


FOUNDATION PLAN
AD-00 SCALE N.T.S.



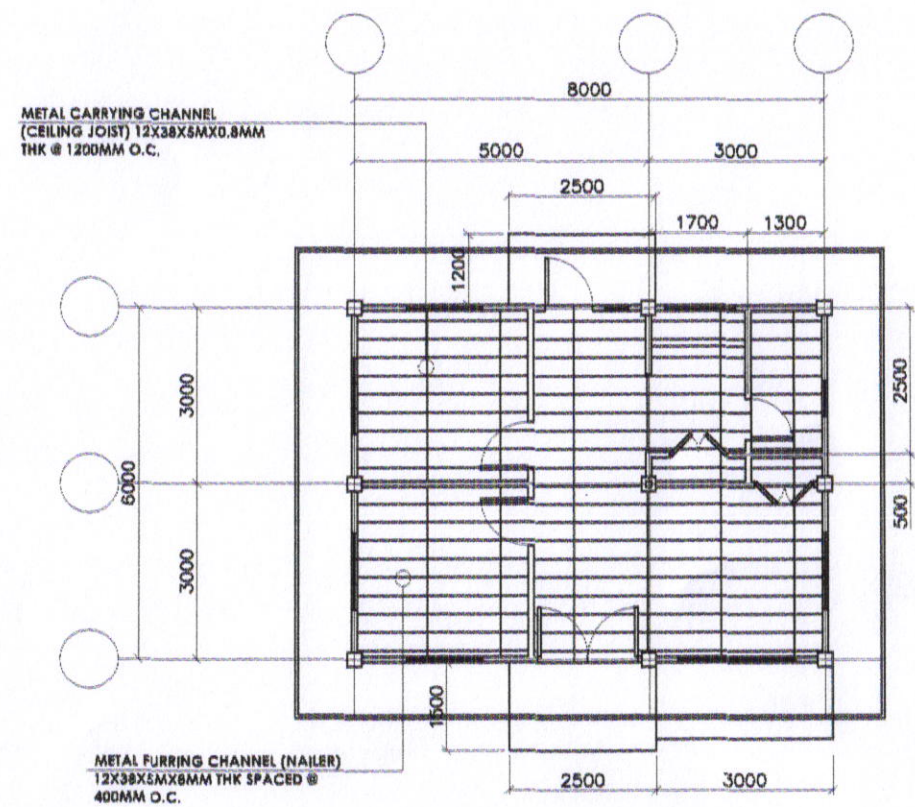
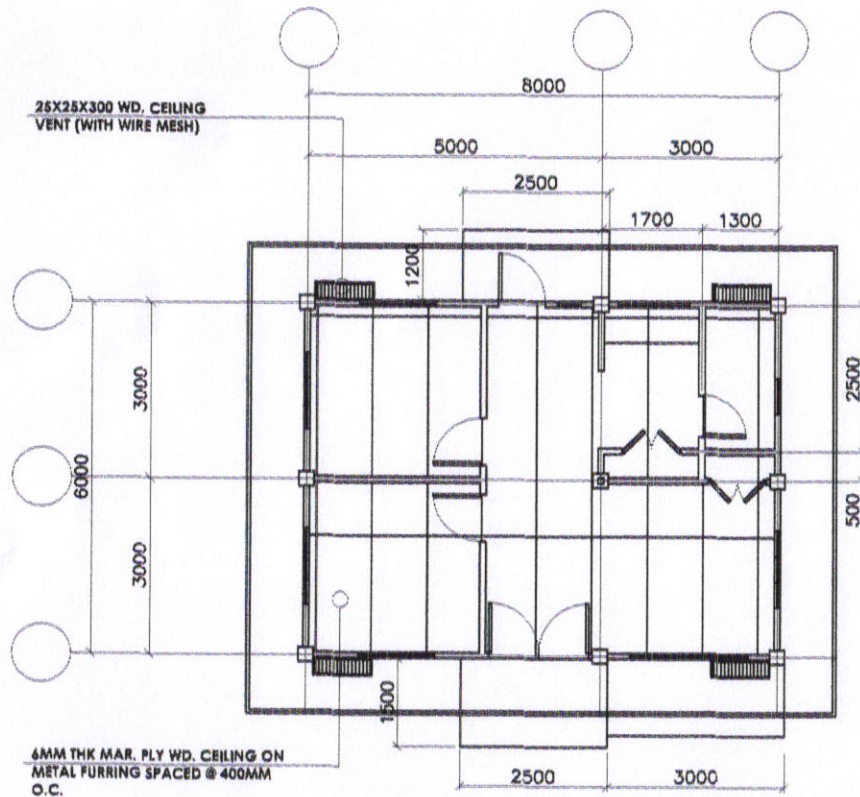
C1F1 PLAN & SECTION
AD-00 SCALE N.T.S.

W1F1 SECTION
AD-00 SCALE N.T.S.

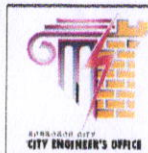


SORSOGON CITY
CITY ENGINEER'S
OFFICE

| | | | | | |
|--|---|--|---------------------------------------|-----------------|------------|
| PROJECT TITLE: | DRAWN BY: | RECOMMENDING APPROVAL: | APPROVED BY: | SHEET CONTENT: | SHEET NO.: |
| CONSTRUCTION / IMPROVEMENT OF HEALTH CENTER | | | | A S - S H O W N | |
| LOCATION : BRGY. PANLAVAN WEST DIST. SORSOGON CITY | MINDEE MAE A. GONZALGO ARCHITECTURAL ASST. | ROEL D. DOMER, C.E./RMP CITY ENGINEER | HON. MA. ESTER E. HAMOR CITY MAYOR | | |



REFLECTED CEILING PLAN
AD-09 SCALE N.T.S.



SORSOGON CITY
CITY ENGINEER'S
OFFICE

PROJECT TITLE:
CONSTRUCTION / IMPROVEMENT OF
HEALTH CENTER

LOCATION: BRGY. PANLAYAAN WEST DIST.
SORSOGON CITY

DRAWN BY:
MINDEE MAE A. GONZALGO
ARCHITECTURAL ASST.

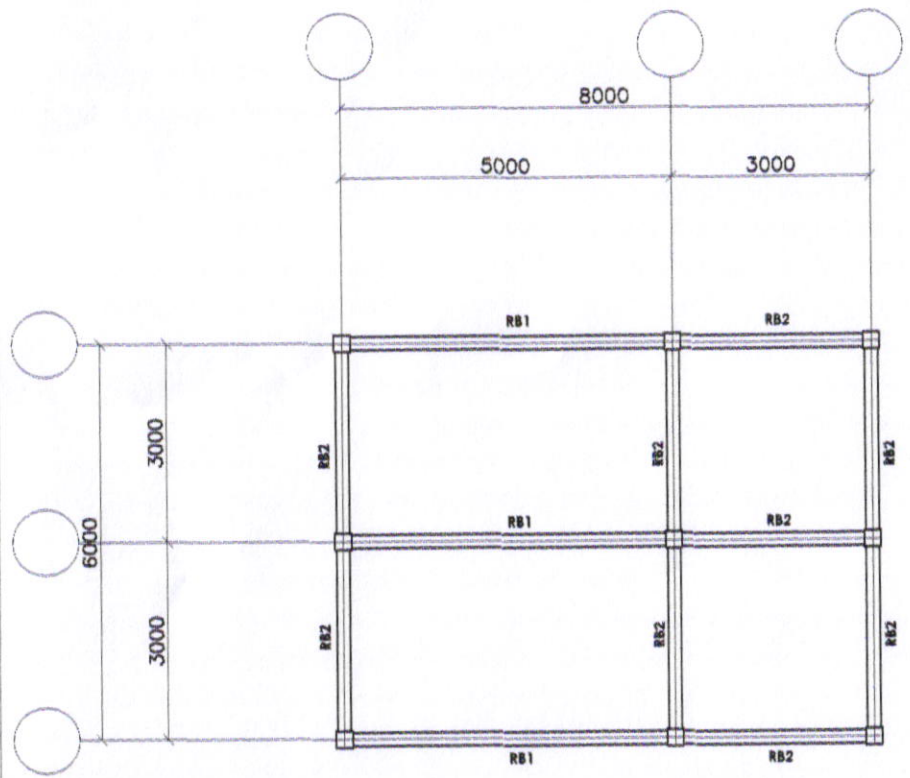
RECOMMENDING APPROVAL
ROEL D. DOMESTICO/RMP
CITY ENGINEER

APPROVED BY
HON. MA. ESTER E. HAMOR
CITY MAYOR

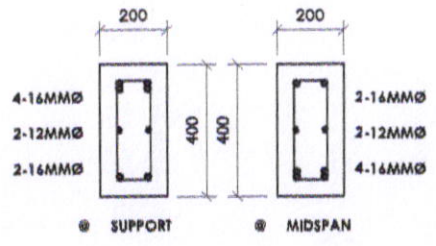
SHEET CONTENT:

A S - S H O W N

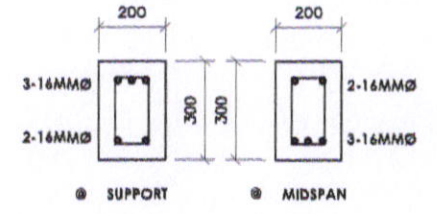
SHEET NO.



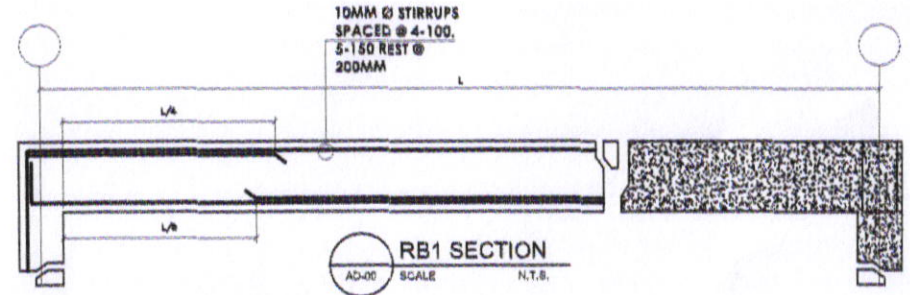
3 DETAILED SECTION
AD-04 SCALE N.T.S.



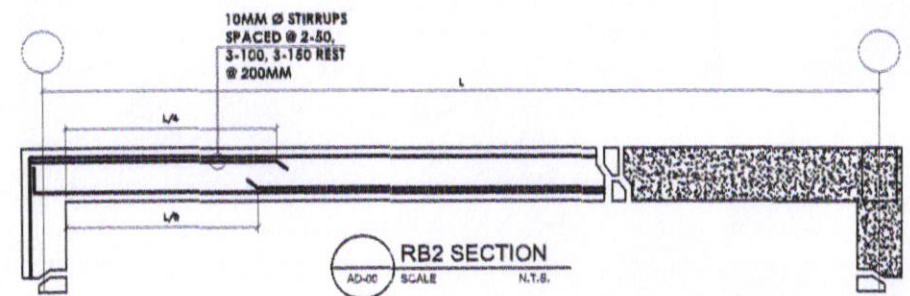
RB1 PLAN
AD-03 SCALE N.T.S.



RB2 PLAN
AD-00 SCALE N.T.S.



RB1 SECTION
AD-00 SCALE N.T.S.

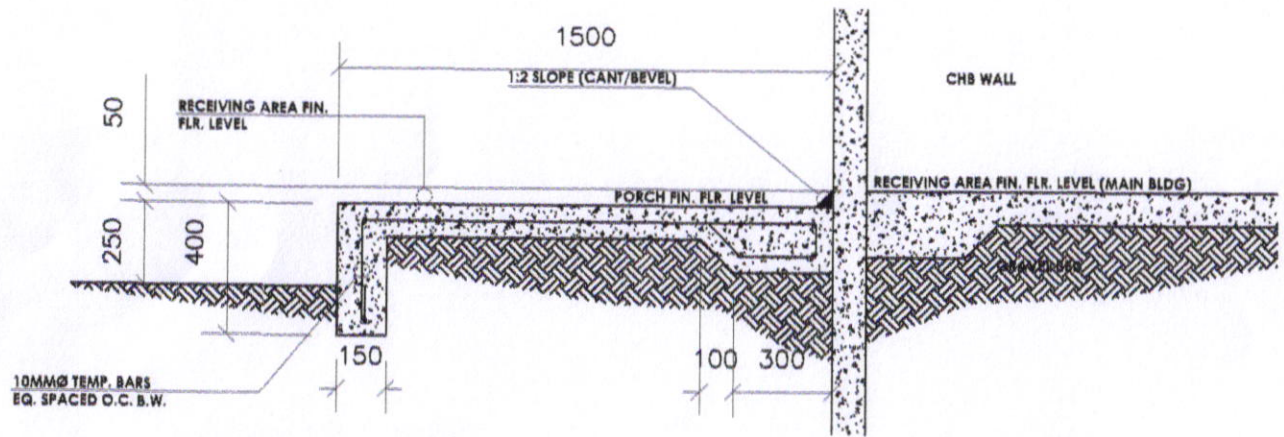


RB2 SECTION
AD-00 SCALE N.T.S.

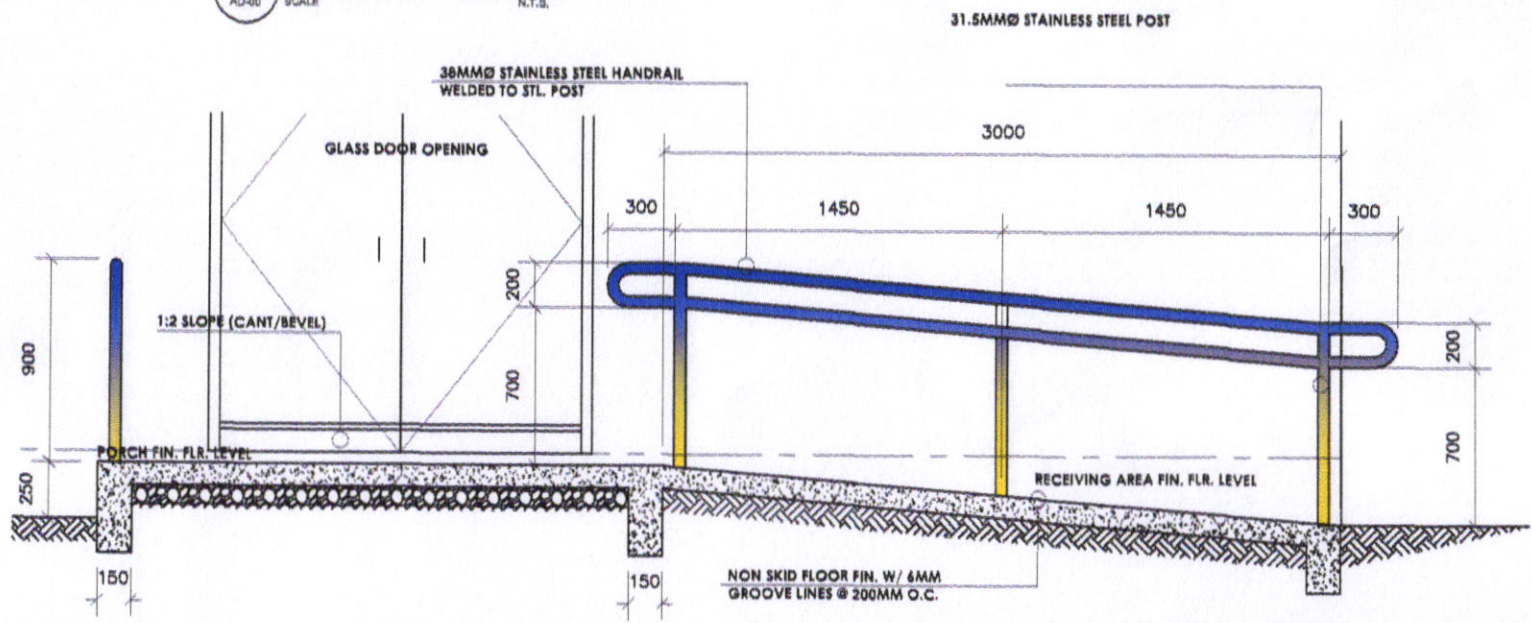


SORSOGON CITY
**CITY ENGINEER'S
OFFICE**

| PROJECT TITLE: | DRAWN BY: | RECOMMENDING APPROVAL: | APPROVED BY: | SHEET CONTENT: | SHEET NO. |
|--|---|---|---------------------------------------|-----------------|-----------|
| CONSTRUCTION / IMPROVEMENT OF HEALTH CENTER | MINDEE MAE A. GONZALGO ARCHITECTURAL ASST. | ROEL D. ROMERO, C.E./RMP CITY ENGINEER | HON. MA. ESTER E. HAMOR CITY MAYOR | A S - S H O W N | |
| LOCATION : BRGY. PANLAYAAN WEST DIST. SORSOGON CITY | | | | | |



DET. SECTION OF PORCH
AD-00 SCALE N.T.S.

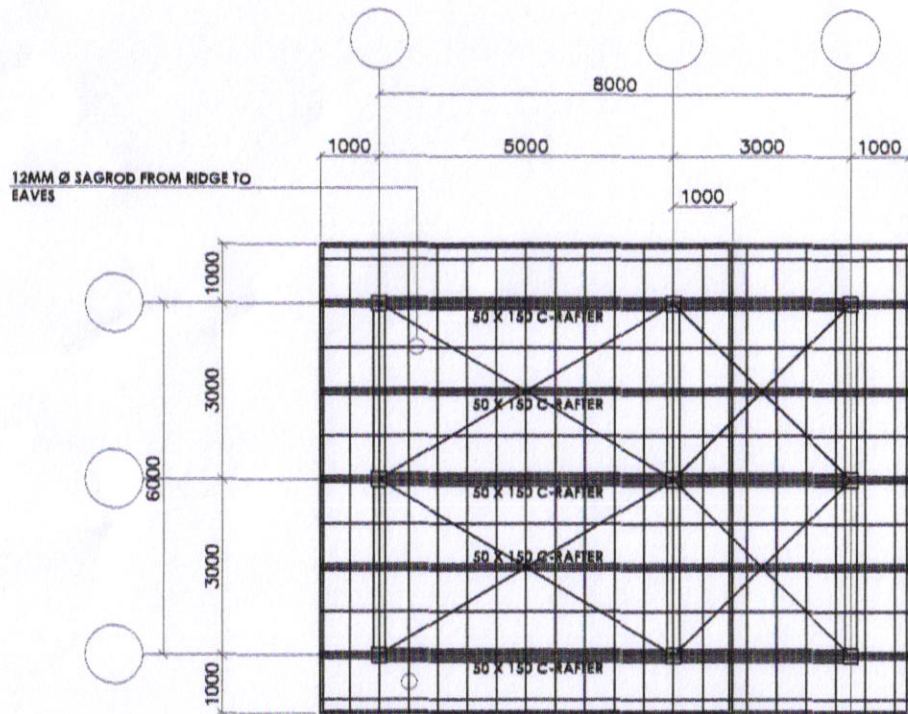


DET. SECTION OF RAMP & PORCH
AD-00 SCALE N.T.S.



SORSOGON CITY
**CITY ENGINEER'S
OFFICE**

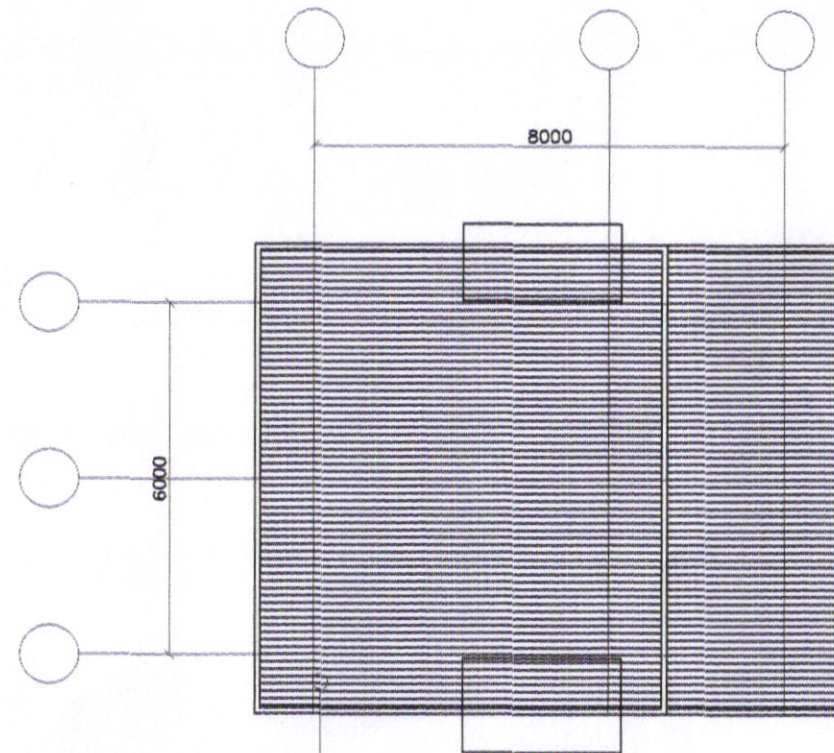
| PROJECT TITLE: | DRAWN BY: | RECOMMENDING APPROVAL | APPROVED BY: | SHEET CONTENT: | SHEET NO. |
|---|---|--|---------------------------------------|-----------------|-----------|
| CONSTRUCTION / IMPROVEMENT OF HEALTH CENTER | MINDEE MAE A. GONZALGO ARCHITECTURAL ASST. | ROEL D. DOMES, C.E./RMP CITY ENGINEER | HON. MA. ESTER E. HAMOR CITY MAYOR | A S - S H O W N | |
| LOCATION : BRGY. PANLAYAAN WEST DIST. SORSOGON CITY | | | | | |



12MM Ø SAGROD FROM RIDGE TO EAVES

(2"x3") 50X75MM C-PURLINS SPACED @ 800MM O.C. W/ 6MM X 25 X 25 X 100MM BOLSTER

AD-00 ROOF FRAMING PLAN SCALE N.T.S.



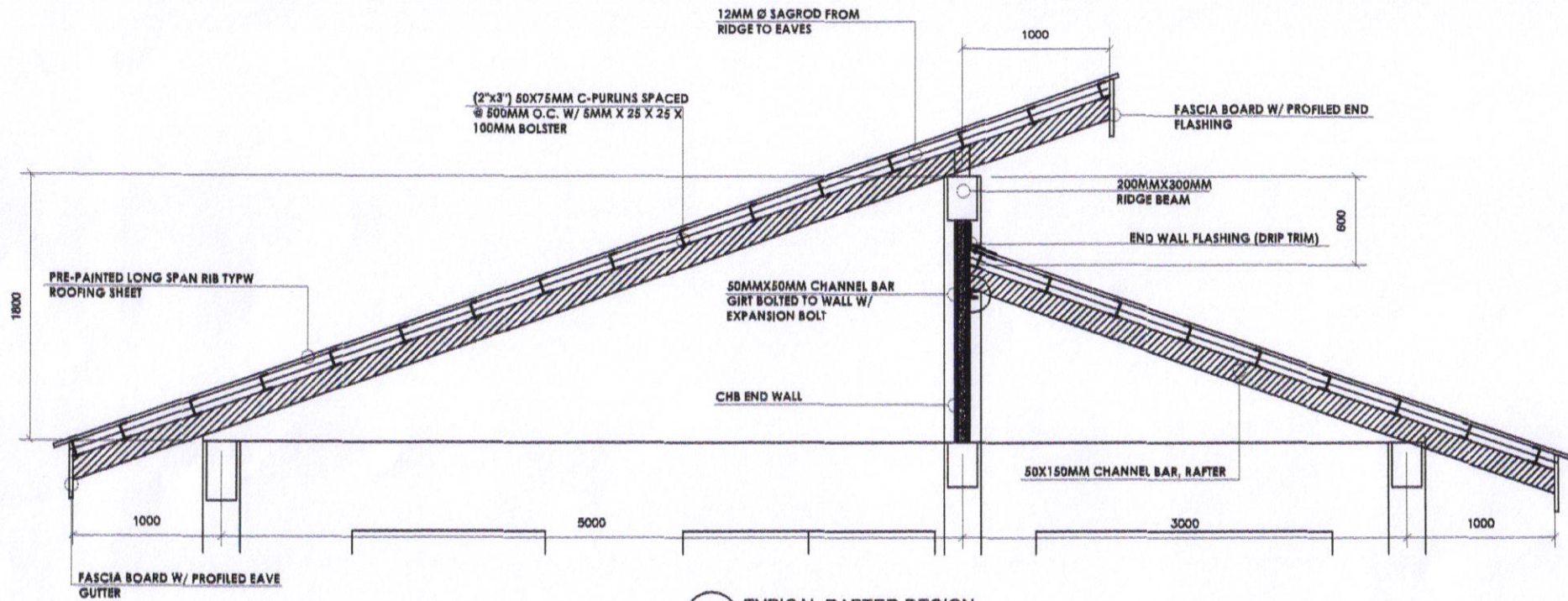
PRE-PAINTED LONG SPAN RIB TYPW ROOFING SHEET

AD-00 ROOF PLAN SCALE N.T.S.

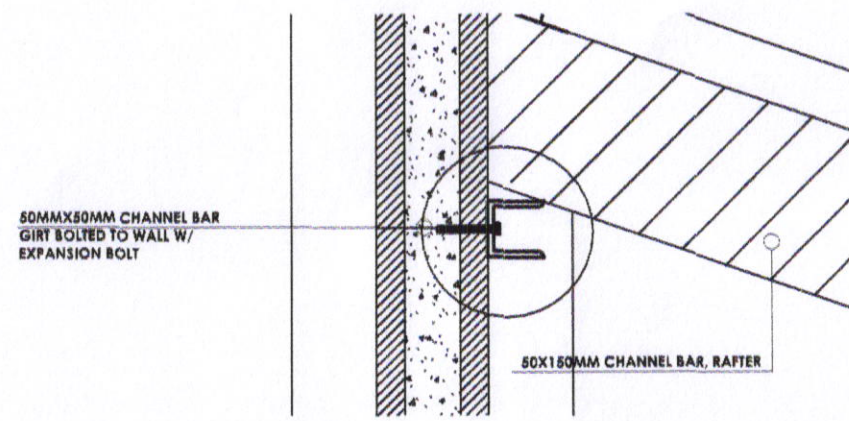



SORSOGON CITY
CITY ENGINEER'S
OFFICE

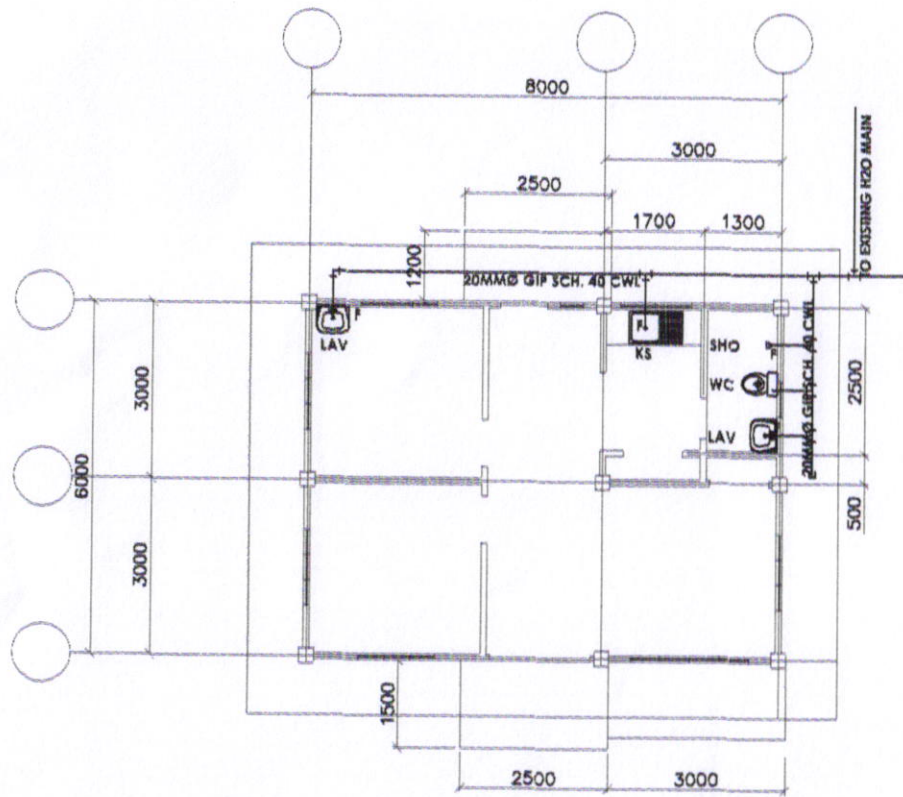
| PROJECT TITLE: | DRAWN BY: | RECOMMENDING APPROVAL | APPROVED BY: | SHEET CONTENT: | SHEET NO. |
|---|---|--|---------------------------------------|-----------------|-----------|
| CONSTRUCTION / IMPROVEMENT OF HEALTH CENTER | | | | A S - S H O W N | |
| LOCATION : BRGY. PANLAYAAN WEST DIST. SORSOGON CITY | MINDEE MAE A. GONZALGO ARCHITECTURAL ASST. | ROEL S. DOMER, C.E./RMP CITY ENGINEER | HON. MA. ESTER E. HAMOR CITY MAYOR | | |



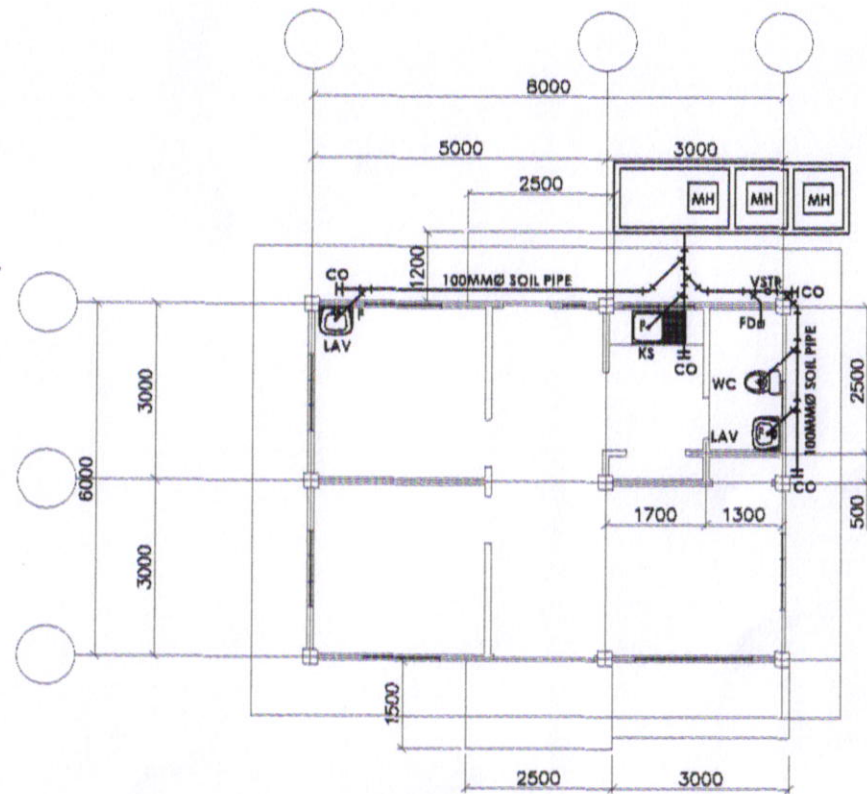
TYPICAL RAFTER DESIGN
AD-00 SCALE N.T.S.



| | | | | | | |
|---|---|---|--|---------------------------------------|-----------------|------------|
|  <p>SORSOGON CITY CITY ENGINEER'S OFFICE</p> | PROJECT TITLE: | DRAWN BY: | RECOMMENDING APPROVAL: | APPROVED BY: | SHEET CONTENT: | SHEET NO.: |
| | CONSTRUCTION / IMPROVEMENT OF HEALTH CENTER | | | | A S - S H O W N | |
| | LOCATION : BRGY. PANLAYAAN WEST DIST. SORSOGON CITY | MINDEE MAE A. GONZALGO ARCHITECTURAL ASST. | ROEL D. BOMBA, C.E./RMP CITY ENGINEER | HON. MA. ESTER E. HAMOR CITY MAYOR | | |



WATERLINE LAYOUT
AD-06 SCALE N.T.S.



SEWAGE LINE LAYOUT
AD-60 SCALE N.T.S.



SORSOGON CITY
CITY ENGINEER'S
OFFICE

PROJECT TITLE:
CONSTRUCTION / IMPROVEMENT OF
HEALTH CENTER
LOCATION : BRGY. PANLAYAAN WEST DIST.
SORSOGON CITY

DRAWN BY:
MINDEE MAE A. GONZALGO
ARCHITECTURAL ASST.

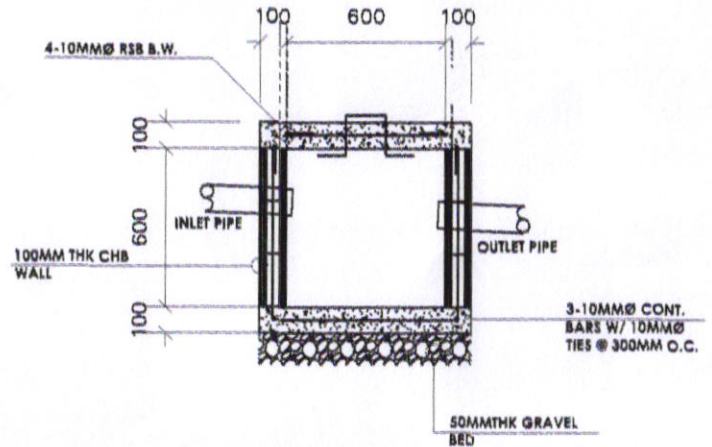
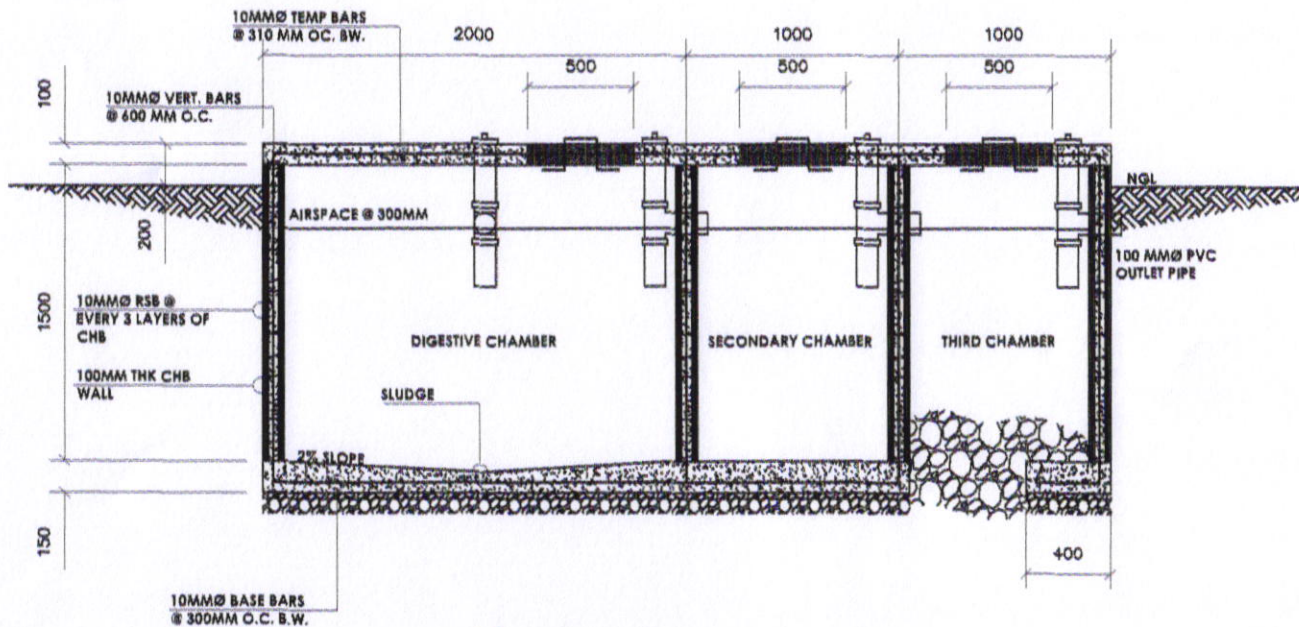
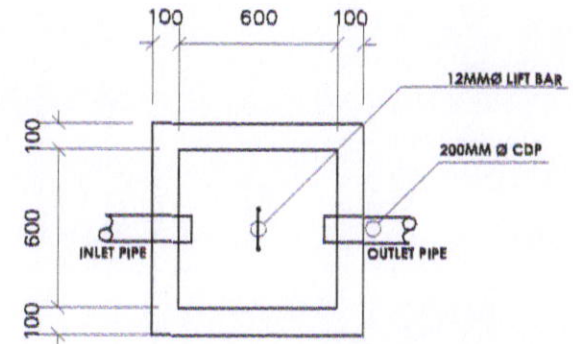
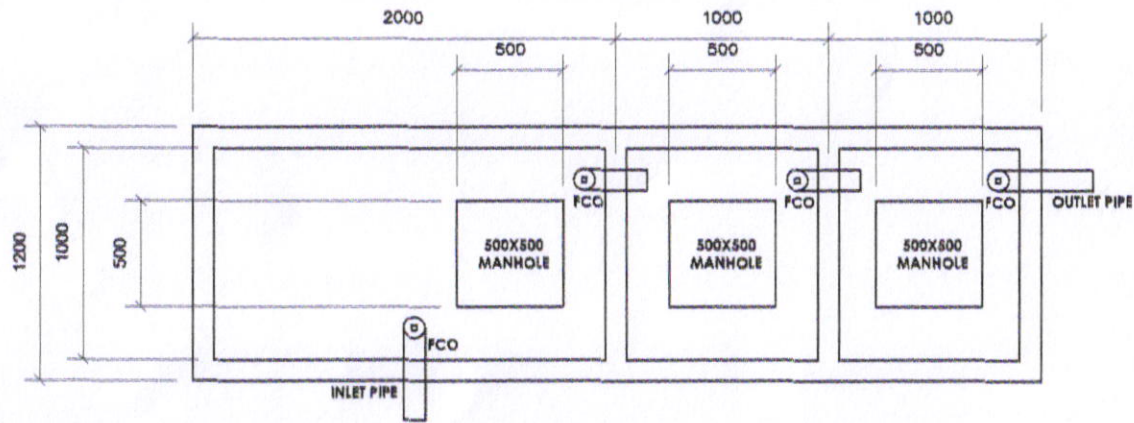
RECOMMENDING APPROVAL:
ROEL D. DOPPER, C.E./RMP
CITY ENGINEER

APPROVED BY:
HON. MA. ESTER E. HAMOR
CITY MAYOR

SHEET CONTENT:


A S - S H O W N

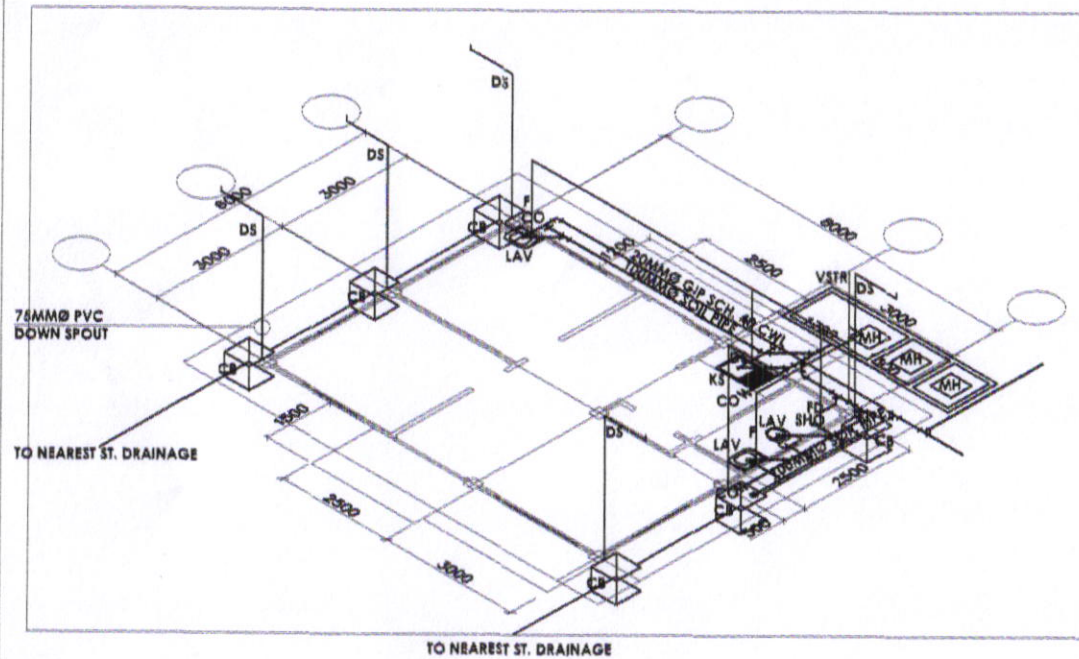
SHEET NO.



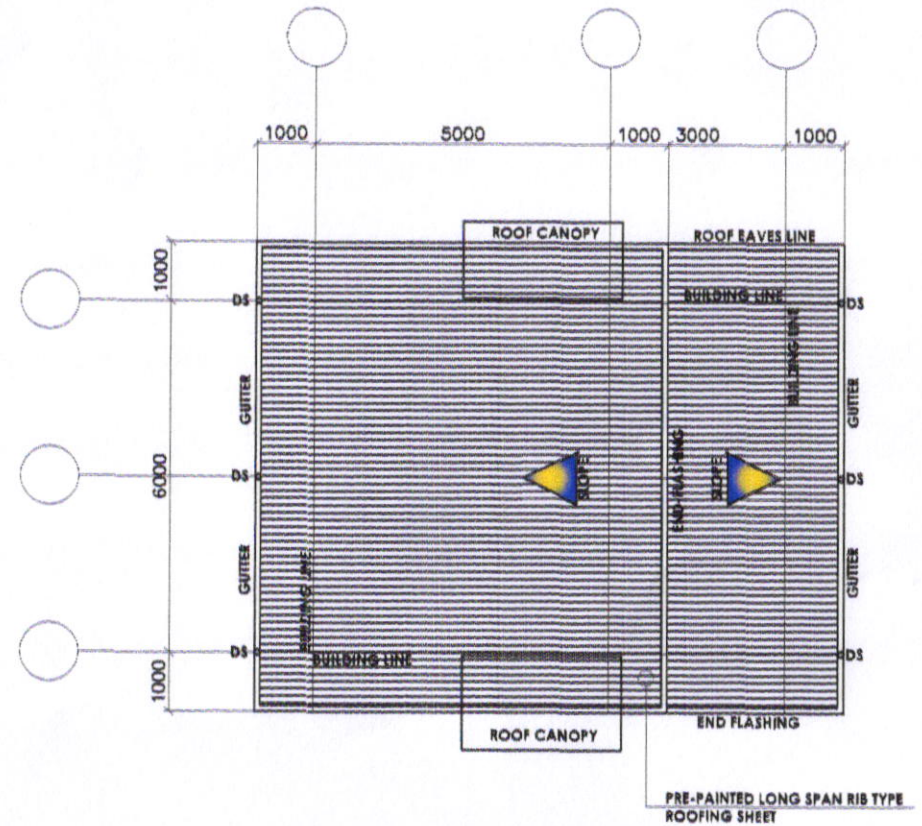
SEPTIC VAULT PLAN & SECTION
AD-00 SCALE N.T.S.

CATCH BASIN PLAN & SECTION
AD-00 SCALE N.T.S.


| | | | | | | |
|---|---|---|--|---------------------------------------|-----------------|-----------|
|  <p>SORSOGON CITY CITY ENGINEER'S OFFICE</p> | PROJECT TITLE: | DRAWN BY: | RECOMMENDING APPROVAL | APPROVED BY: | SHEET CONTENT: | SHEET NO. |
| | CONSTRUCTION / IMPROVEMENT OF HEALTH CENTER | | | | A S - S H O W N | |
| | LOCATION : BRGY. PANLAYAAN WEST DIST. SORSOGON CITY | MINDEE MAE A. GONZALGO ARCHITECTURAL ASST. | ROEL D. DOMER, C.E./RMP CITY ENGINEER | HON. MA. ESTER E. HAMOR CITY MAYOR | | |

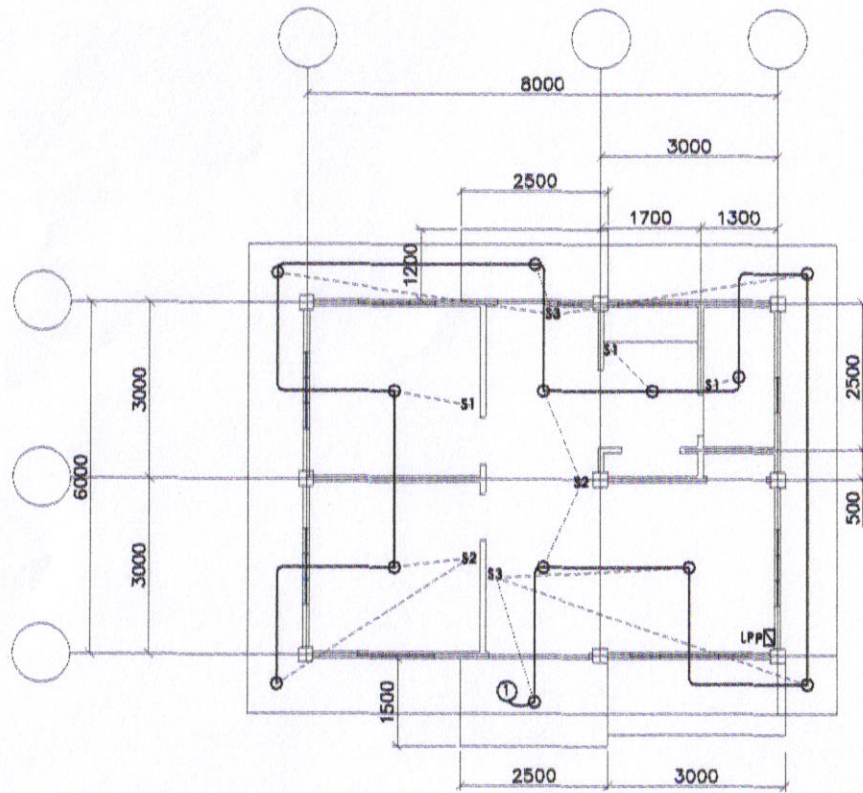


ISOMETRIC LAYOUT
AD-00 SCALE N.T.S.

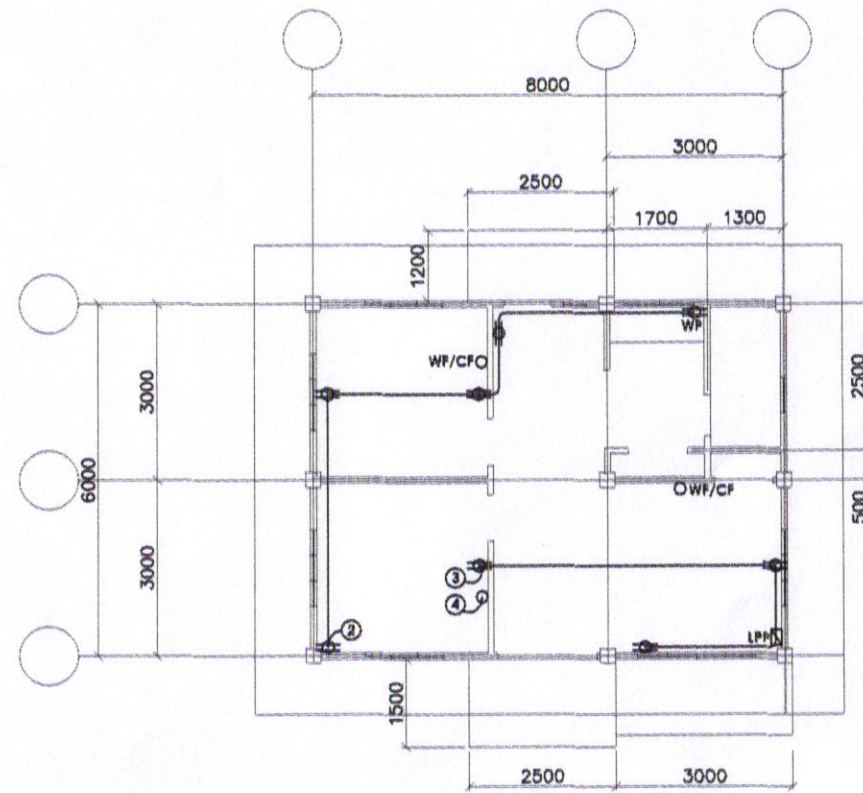


ROOF PLAN/ STORM WATER LAYOUT
AD-06 SCALE N.T.S.


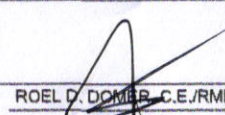
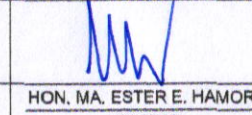
| | | | | | | |
|--|---|---|--|---------------------------------------|-----------------|------------|
|  <p>SORSOGON CITY CITY ENGINEER'S OFFICE</p> | PROJECT TITLE: | DRAWN BY: | RECOMMENDING APPROVAL: | APPROVED BY: | SHEET CONTENT: | SHEET NO.: |
| | CONSTRUCTION / IMPROVEMENT OF HEALTH CENTER | | | | A S - S H O W N | |
| | LOCATION : BRGY. PANLAYAAN WEST DIST, SORSOGON CITY | MINDEE MAE A. GONZALGO ARCHITECTURAL ASST. | ROEL D. DOMER, C.E./RMP CITY ENGINEER | HON. MA. ESTER E. HAMOR CITY MAYOR | | |



LIGHTING LAYOUT
AD-00 SCALE N.T.S.



POWER LAYOUT
AD-00 SCALE N.T.S.

| | | | | | | |
|--|---|---|---|---|---|-----------------|
|  <p>SORSOGON CITY CITY ENGINEER'S OFFICE</p> | PROJECT TITLE: | DRAWN BY: | RECOMMENDING APPROVAL | APPROVED BY: | SHEET CONTENT: | SHEET NO. |
| | CONSTRUCTION / IMPROVEMENT OF HEALTH CENTER | | |  |  | A S - S H O W N |
| | LOCATION : BRGY. PANLAYAAN WEST DIST. SORSOGON CITY | MINDEE MAE A. GONZALGO ARCHITECTURAL ASST. | ROEL D. DOMBOR, C.E./RMP CITY ENGINEER | HON. MA. ESTER E. HAMOR CITY MAYOR | | |

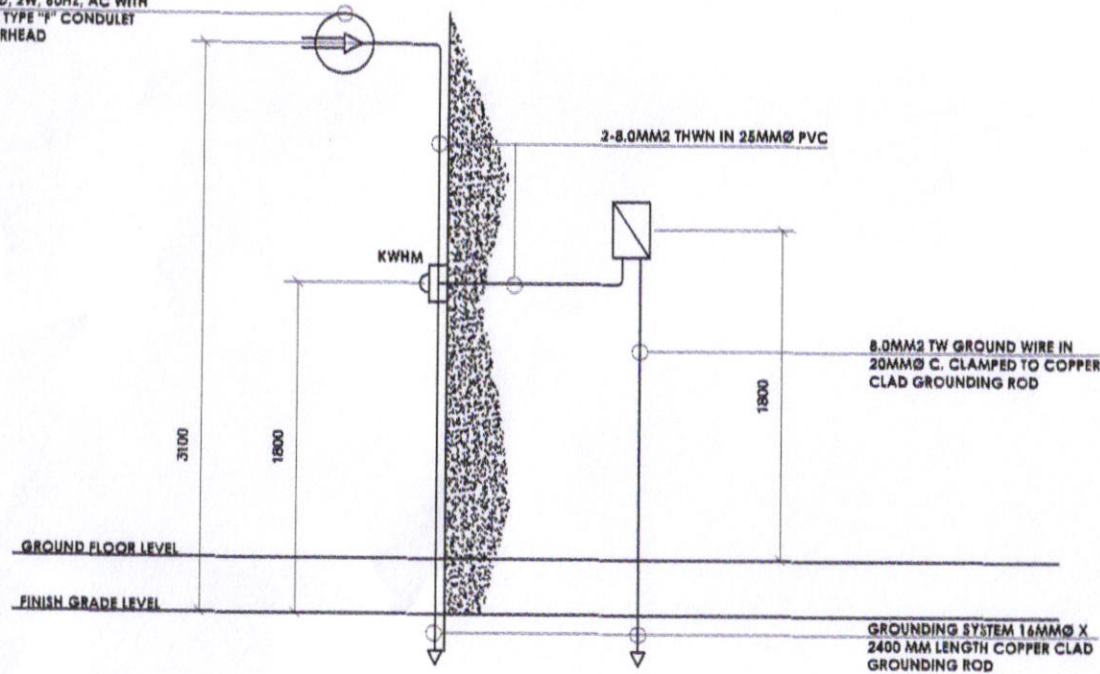
SCHEDULE OF LOADS

| CKT NO. | DESCRIPTION | VOLT-AMPERE | VOLTAGE | AMPERE | NO. OF POLES | CKT PROTECTION | SIZE OF HOMERUN (WIRE CONDUIT) |
|---------|----------------------|-------------|---------|-------------------------------------|--------------|----------------|---|
| CKT 1 | LIGHTING OUTLET | 650 | 230 | 2.82 | 2 | 15AT | 2-2.0MM ² THWN/THHN IN 20MMØ PVC |
| CKT 2 | CONVENIENCE OUTLET | 900 | 230 | 3.91 | 2 | 20AT | 2-3.5MM ² THWN/THHN IN 20MMØ PVC 1-3.5MM ² EGC |
| CKT 3 | CONVENIENCE OUTLET | 540 | 230 | 2.35 | 2 | 20 AT | 2-3.5MM ² THWN/THHN IN 20MMØ PVC 1-3.5MM ² EGC |
| CKT 4 | WALL FAN/CEILING FAN | 1500 | 230 | 6.52 | 2 | 20AT | 2-3.5MM ² THWN/THHN IN 20MMØ PVC 1-3.5MM ² EGC |
| TOTAL | | 3590 | 230 | MACB: 50 AF, 2P, 230V, 40AT, 10KAIC | | | |

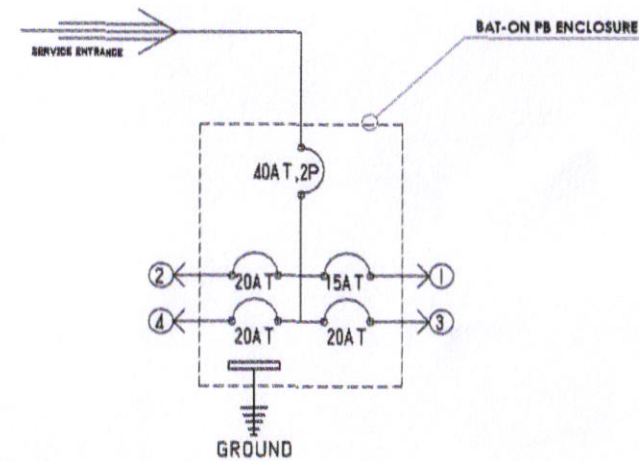
| KEY TO SYMBOLS | |
|----------------|---|
| | SERVICE ENTRANCE |
| | KILOWATT HOUR METER |
| | PANEL BOARD |
| | CIRCUIT BREAKER |
| | CIRCUIT HOMERUN |
| | LIGHTING OUTLET |
| | DUPLEX UNIVERSAL W/ GROUND |
| | DUPLEX UNIVERSAL W/ GROUND WEATHERPROOF |
| | ONE-GANG SWITCH |
| | TWO-GANG SWITCH |
| | THREE-GANG SWITCH |
| | SWITCH LEG |
| | LIGHTING CIRCUIT |
| | POWER CIRCUIT |
| | PANEL BOARD |
| | K.W.H. |
| | GENERATOR SET |

IL @ 100% DF (3590/ 230) 100= 15.61 A USE 2-8.0 MM² THWN IN 25MMØ PVC

OVERHEAD SERVICE ENTRANCE,
230V, 1Ø, 2W, 60HZ, AC WITH
25MMØ TYPE "F" CONDULET
WEATHERHEAD



RISER DIAGRAM
AD-00 SCALE N.T.S.



SINGLE LINE DIAGRAM
AD-00 SCALE N.T.S.

| | | | | | | |
|---|---|---|--|---------------------------------------|-----------------|-----------|
| <p>SORSOGON CITY CITY ENGINEER'S OFFICE</p> | PROJECT TITLE: | DRAWN BY: | RECOMMENDING APPROVAL: | APPROVED BY: | SHEET CONTENT: | SHEET NO. |
| | CONSTRUCTION / IMPROVEMENT OF HEALTH CENTER | | | | A S - S H O W N | |
| | LOCATION : BRGY. PANLAYAAN WEST DIST. SORSOGON CITY | MINDEE MAE A. GONZALGO ARCHITECTURAL ASST. | ROEL D. DOMER, C.E./RMP CITY ENGINEER | HON. MA. ESTER E. HAMOR CITY MAYOR | | |