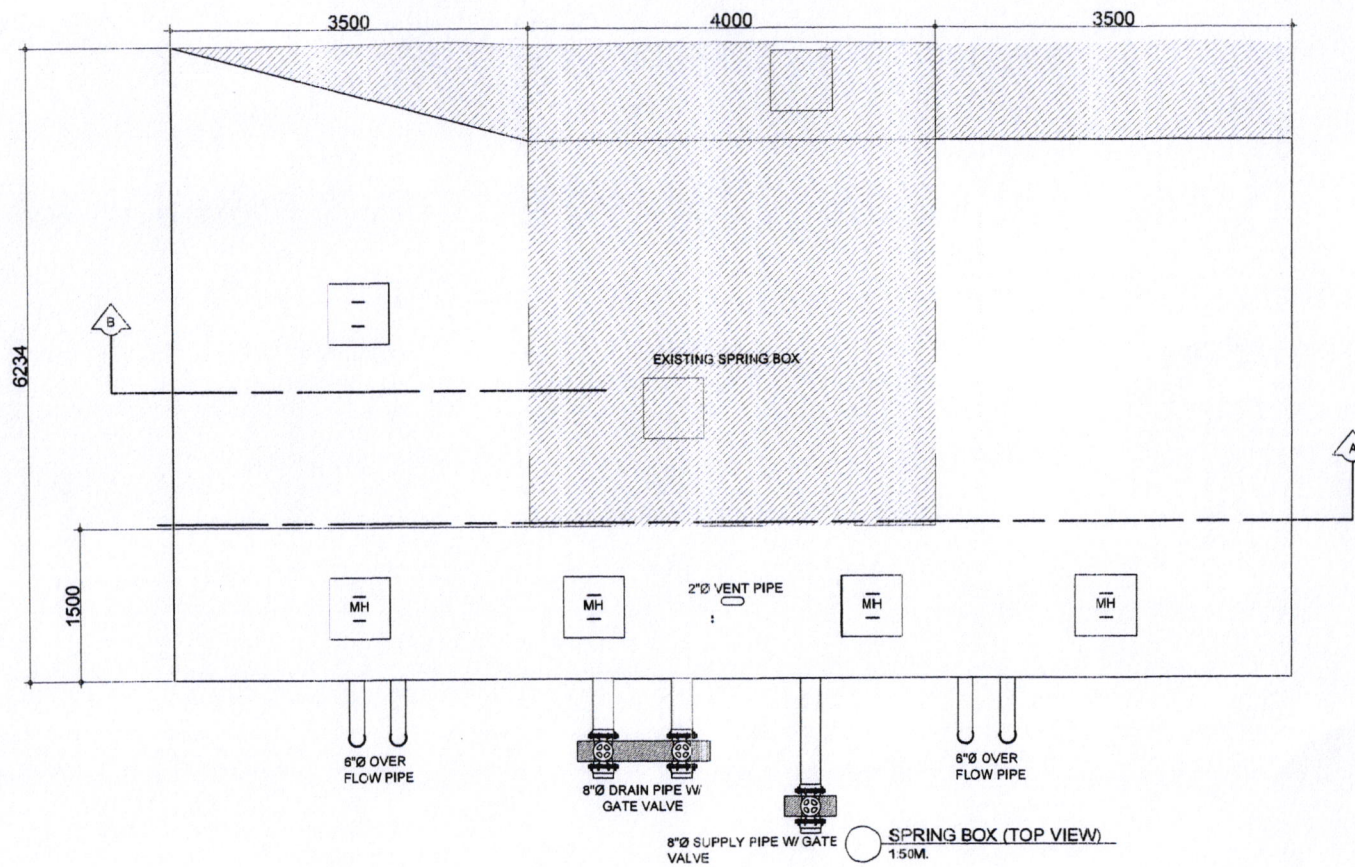
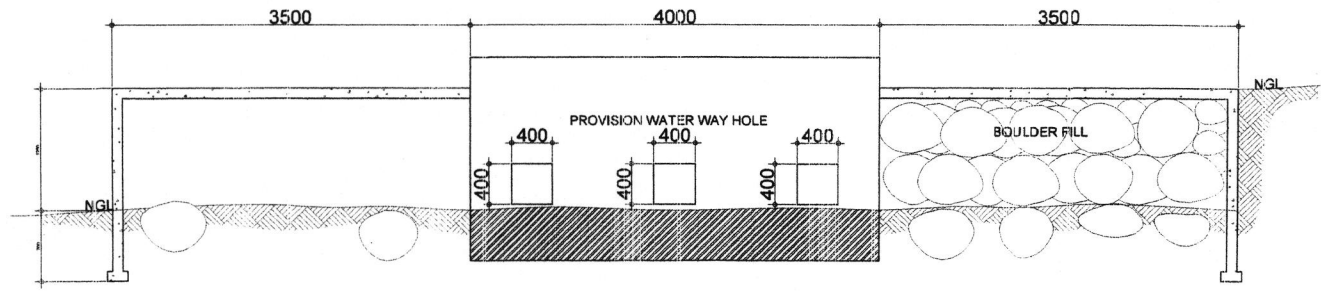


○ SPRING BOX (FRONT VIEW)  
1.50M.

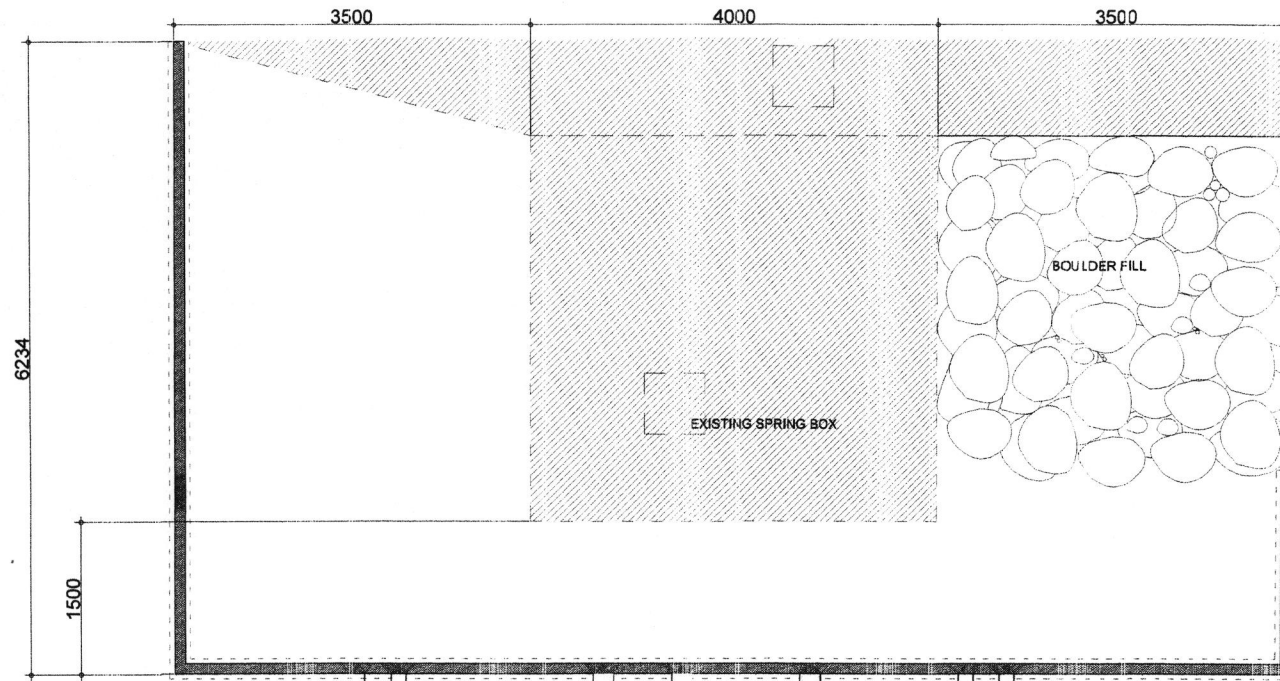


○ SPRING BOX (TOP VIEW)  
1.50M.


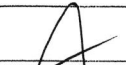
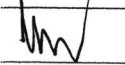
SORSOGON CITY  <b>CITY ENGINEERING OFFICE</b>	PROJECT TITLE :	DRAWN BY :	RECOMMENDED BY :	APPROVED BY :	SHEET CONTENT :	SHEET NO. :
	PROPOSED REHABILITATION/ IMPROVEMENT OF LEVEL II POTABLE WATER SYSTEM	<i>[Signature]</i>	<i>[Signature]</i>	<i>[Signature]</i>	AS SHOWN	
	LOC: BRGY. STO. NIÑO, BACON DISTRICT, SORSOGON CITY	ERWIN D. EQUIPADO CONST. & MAINT. GEN. FOREMAN	ROEL D. DOMERICE/RMP CITY ENGINEER	HON. MA. ESTER E. HAMOR CITY MAYOR		

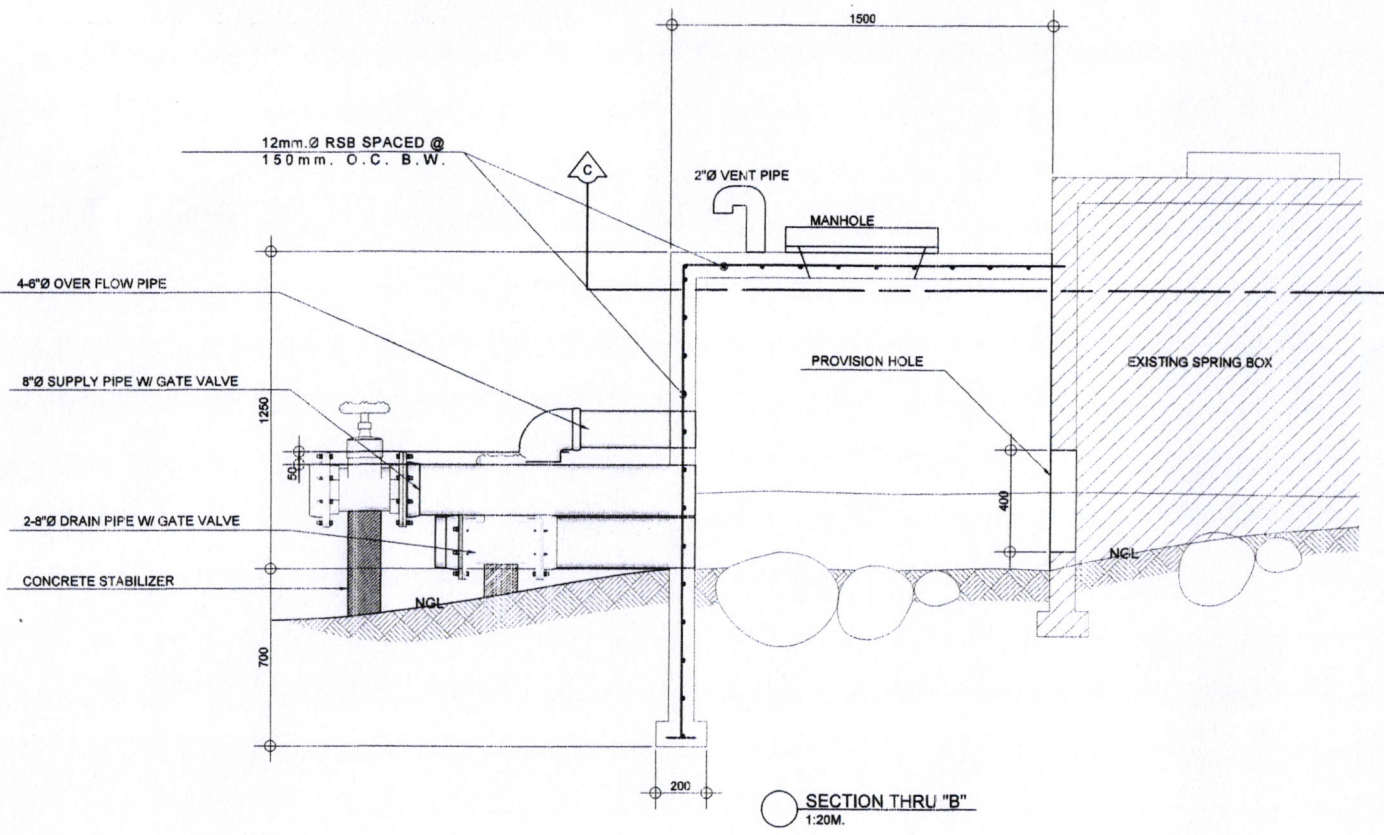


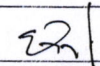
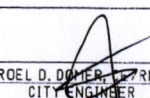
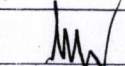
SECTION THRU "A"  
1:50M.

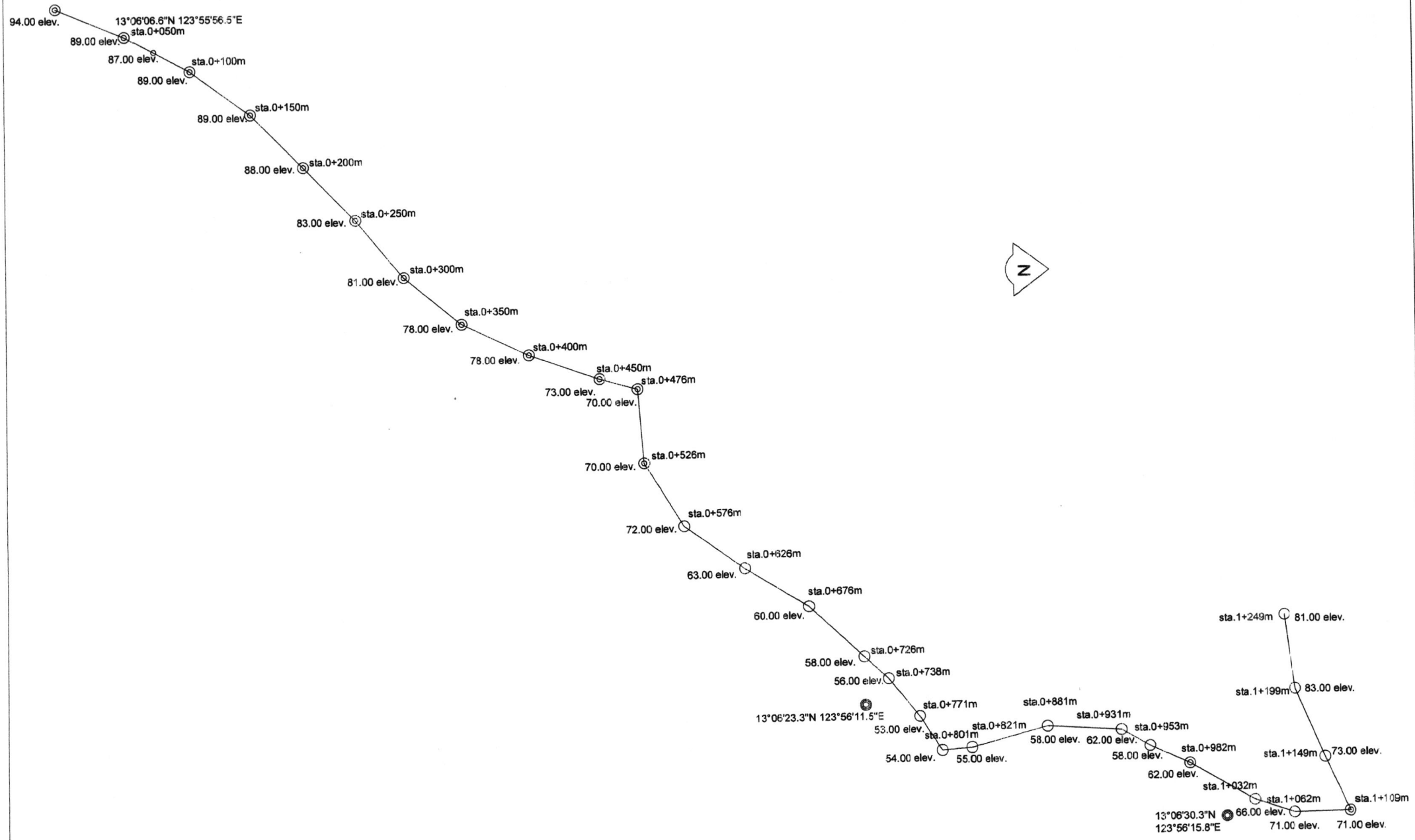


SECTION THRU "C"  
1:50M.

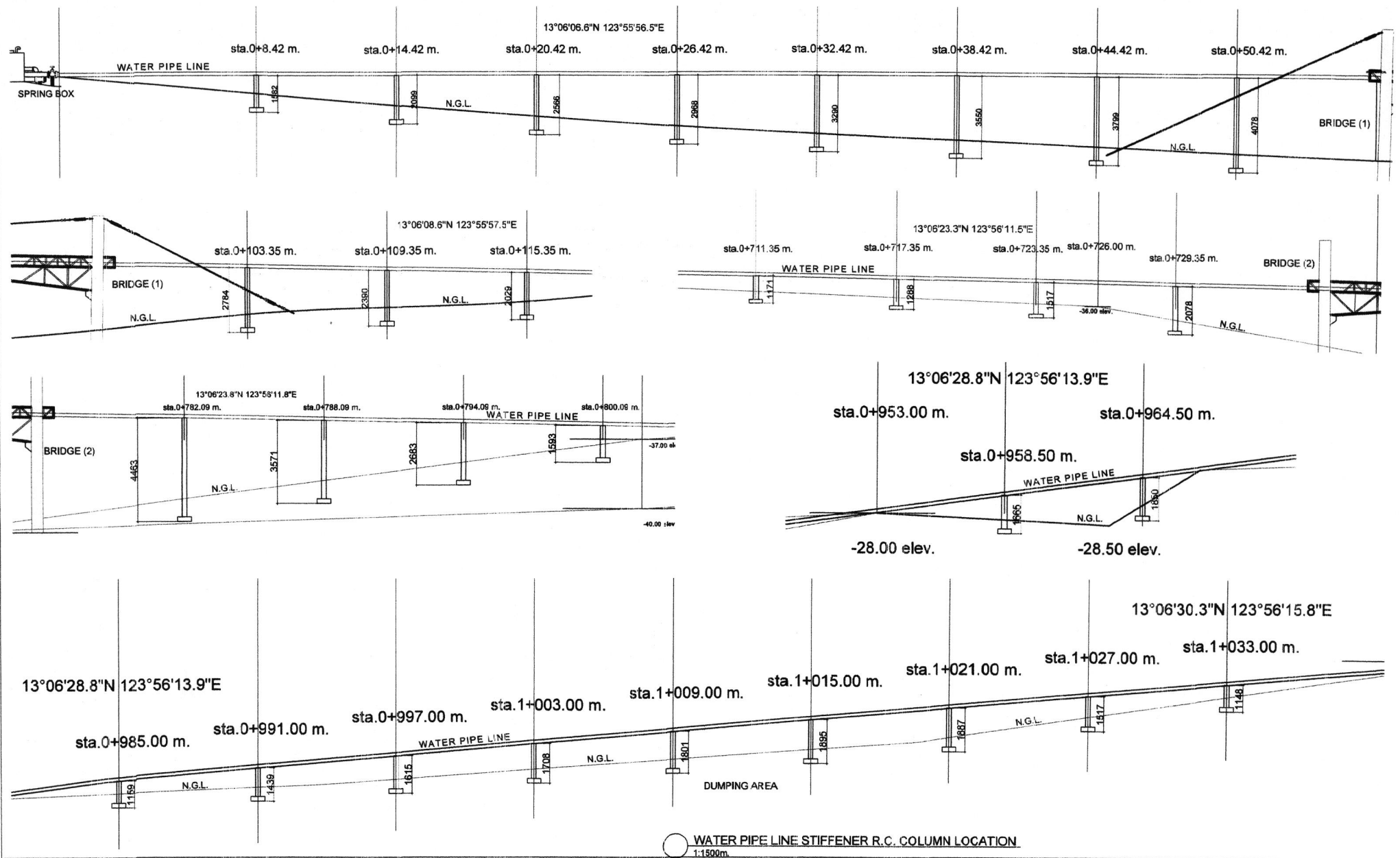
SORSOGON CITY  <b>CITY ENGINEERING OFFICE</b>	PROJECT TITLE :	DRAWN BY :	RECOMMENDED BY :	APPROVED BY :	SHEET CONTENT :	SHEET NO. :
	PROPOSED REHABILITATION / IMPROVEMENT OF LEVEL II POTABLE WATER SYSTEM	 ERWIN D. EQUIPADO CONST. & MAINT. GEN. FOREMAN	 ROEL D. DOMEZ CITY ENGINEER	 HON. MA. ESTER E. HAMOR CITY MAYOR	AS SHOWN	
	LOC : BRGY. STO. NIÑO, BACON DISTRICT, SORSOGON CITY					





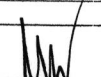
SORSOGON CITY <b>CITY ENGINEERING OFFICE</b>	PROJECT TITLE : PROPOSED REHABILITATION / IMPROVEMENT OF LEVEL II POTABLE WATER SYSTEM	DRAWN BY : 	RECOMMENDED BY : 	APPROVED BY : 	SHEET CONTENT : AS SHOWN	SHEET NO. : 
	LOC : BRGY. STO. NIÑO, BACON DISTRICT, SORSOGON CITY	ERWIN D. EQUIPADO CONST. & MAINT. GEN. FOREMAN	ROEL D. DENTER, RMP CITY ENGINEER	HON. MA. ESTER E. HAMOR CITY MAYOR		

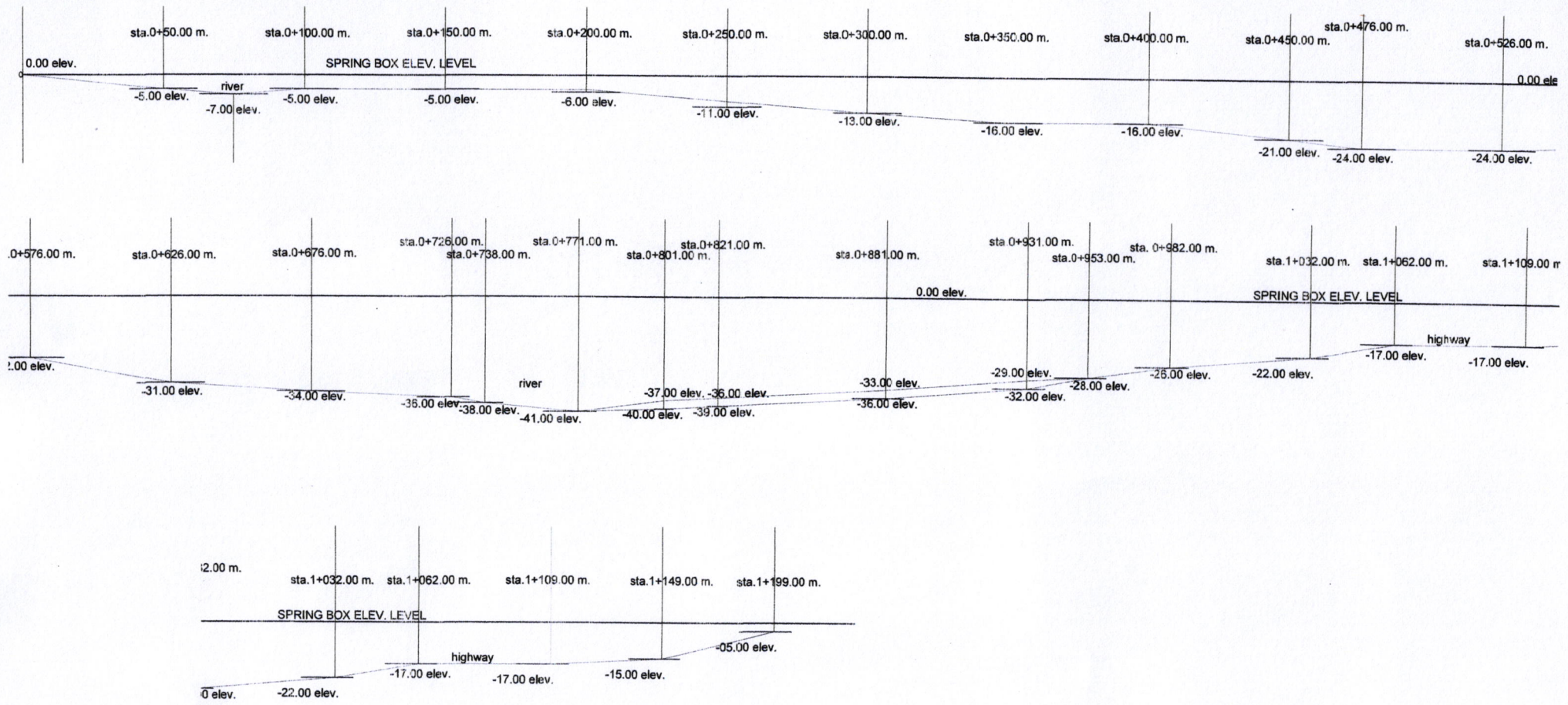


SORSOGON CITY <b>CITY ENGINEERING OFFICE</b>	PROJECT TITLE :	DRAWN BY :	RECOMMENDED BY :	APPROVED BY :	SHEET CONTENT :	SHEET NO. :
	PROPOSED REHABILITATION/ IMPROVEMENT OF LEVEL II POTABLE WATER SYSTEM LOC: BRGY. STO. NIÑO, BACON DISTRICT, SORSOGON CITY	 ERWIN D. EQUIVADO CONST. & MAINT. GEN. FOREMAN	 ROEL D. DONNER, CRMP CITY ENGINEER	 HON. MA. ESTER E. HAMOR CITY MAYOR	AS SHOWN	1

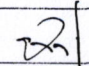
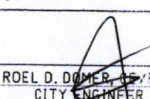
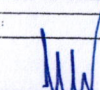


○ WATER PIPE LINE STIFFENER R.C. COLUMN LOCATION  
1:1500m.

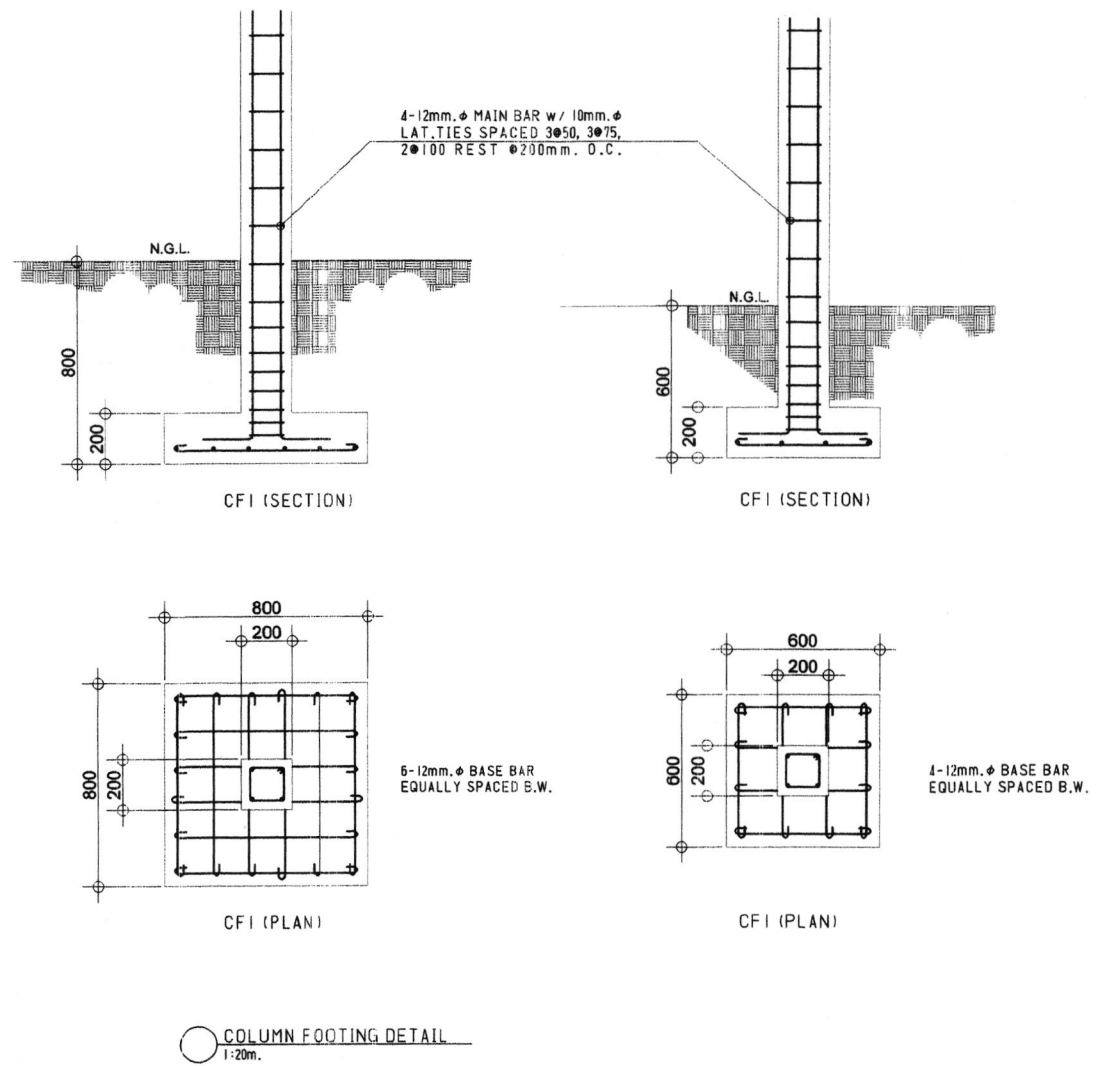
SORSOGON CITY  <b>CITY ENGINEERING OFFICE</b>	PROJECT TITLE :	DRAWN BY :	RECOMMENDED BY :	APPROVED BY :	SHEET CONTENT :	SHEET NO. :
	PROPOSED REHABILITATION/ IMPROVEMENT OF LEVEL II POTABLE WATER SYSTEM	 ERWIN D. EQUIPADO CONST. & MAINT. GEN. FOREMAN	 ROEL D. DOMEZ, C.E., P.E. CITY ENGINEER	 HON. MA. ESTER E. HAMOR CITY MAYOR	AS SHOWN	
	LOC: BRGY. STO. NIRO, BACON DISTRICT, SORSOGON CITY					



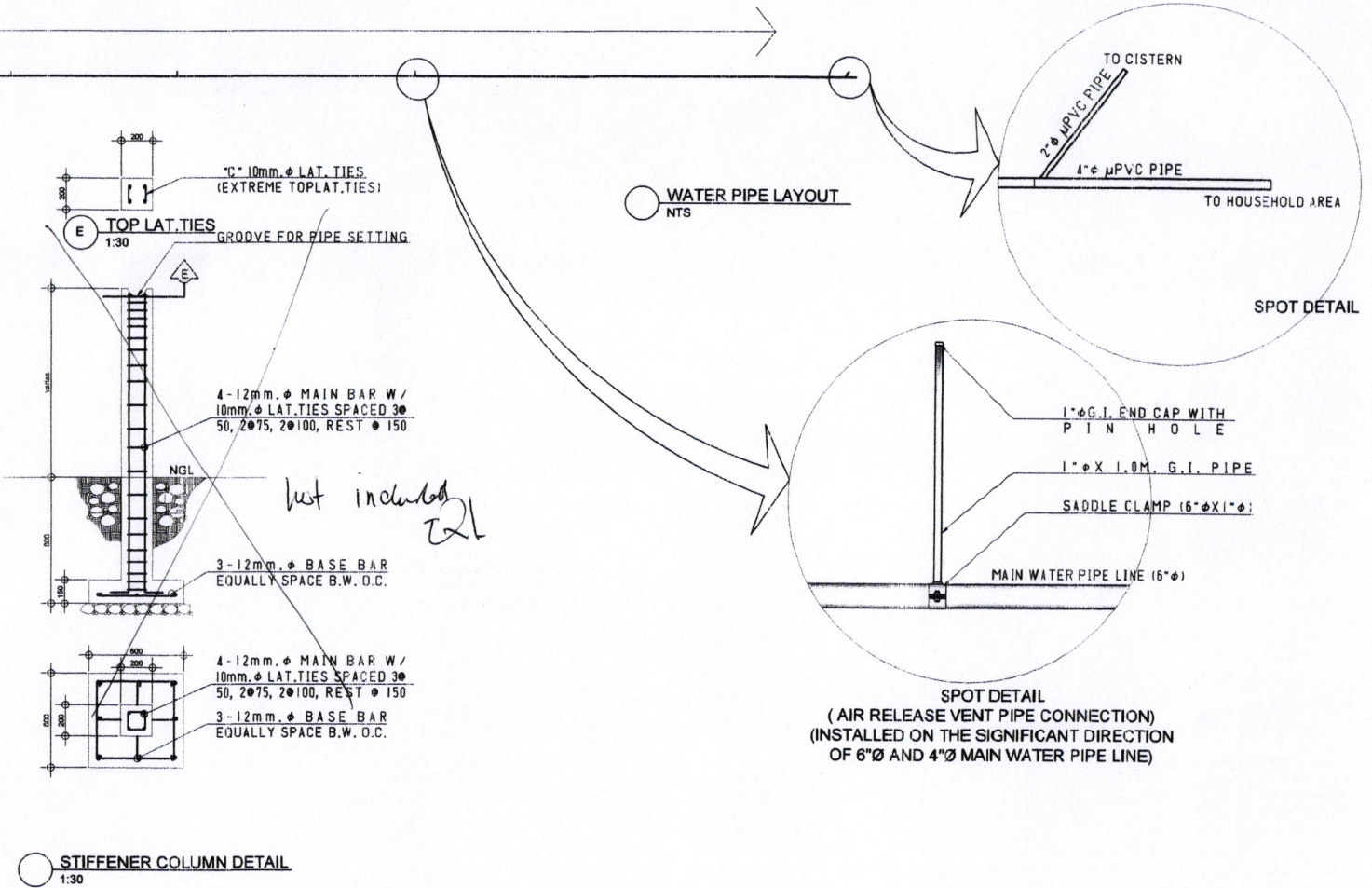
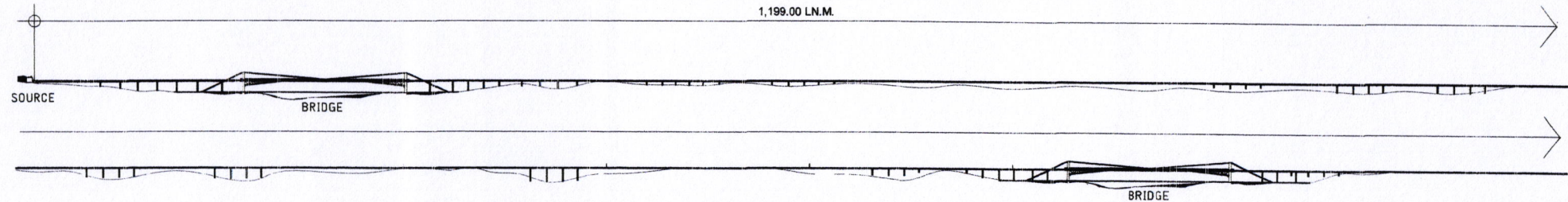
PIPE LAYING PROFILE  
NTS

SORSOGON CITY  <b>CITY ENGINEERING OFFICE</b>	PROJECT TITLE :	DRAWN BY :	RECOMMENDED BY :	APPROVED BY :	SHEET CONTENT :	SHEET NO. :
	PROPOSED REHABILITATION/ IMPROVEMENT OF LEVEL II POTABLE WATER SYSTEM	 ERWIN D. EQUIPADO CONST. & MAINT. GEN. FOREMAN	 ROEL D. DOMEZ, RMP CITY ENGINEER	 HON. MA. ESTER E. HAMOR CITY MAYOR	AS SHOWN	
	LOC: BRGY. STO. NIÑO, BACON DISTRICT, SORSOGON CITY					

LOCATION OF R.C. POST/PROP.						
	STATION # (mtr.)	DIMENSION (mmxmm)	HEIGHT (mtr.)	FOOTING (mtr.)	DETAIL	COORDINATES
1	sta. 0+8.42	200 x 200	1.582	0.20 x 0.60 x 0.60	CF2	13°06'06"N 123°55'57"E
2	sta. 0+14.42	200 x 200	2.100	0.20 x 0.60 x 0.60	CF2	
3	sta. 0+20.42	200 x 200	2.766	0.20 x 0.80 x 0.80	CF1	
4	sta. 0+26.42	200 x 200	2.968	0.20 x 0.80 x 0.80	CF1	
5	sta. 0+32.42	200 x 200	3.290	0.20 x 0.80 x 0.80	CF1	13°06'08.6"N 123°55'57.5"E
6	sta. 0+38.42	200 x 200	3.550	0.20 x 0.80 x 0.80	CF1	
7	sta. 0+44.42	200 x 200	3.800	0.20 x 0.80 x 0.80	CF1	
8	sta. 0+50.42	200 x 200	4.078	0.20 x 0.80 x 0.80	CF1	
9	sta. 0+103.35	200 x 200	2.784	0.20 x 0.80 x 0.80	CF1	13°06'23.3"N 123°56'13.9"E
10	sta. 0+109.35	200 x 200	2.390	0.20 x 0.60 x 0.60	CF2	
11	sta. 0+115.35	200 x 200	2.029	0.20 x 0.60 x 0.60	CF2	
12	sta. 0+711.35	200 x 200	1.171	0.20 x 0.60 x 0.60	CF2	
13	sta. 0+717.35	200 x 200	1.288	0.20 x 0.60 x 0.60	CF2	13°06'23.8"N 123°56'11.8"E
14	sta. 0+723.35	200 x 200	1.517	0.20 x 0.60 x 0.60	CF2	
15	sta. 0+729.35	200 x 200	2.078	0.20 x 0.60 x 0.60	CF2	
16	sta. 0+782.09	200 x 200	4.463	0.20 x 0.80 x 0.80	CF1	
17	sta. 0+788.09	200 x 200	3.571	0.20 x 0.80 x 0.80	CF1	13°06'28.8"N 123°56'13.9"E
18	sta. 0+794.09	200 x 200	2.683	0.20 x 0.80 x 0.80	CF1	
19	sta. 0+800.09	200 x 200	1.593	0.20 x 0.60 x 0.60	CF2	
20	sta. 0+958.50	200 x 200	1.665	0.20 x 0.60 x 0.60	CF2	
21	sta. 0+964.50	200 x 200	1.850	0.20 x 0.60 x 0.60	CF2	13°06'29.3"N 123°56'14.5"E
22	sta. 0+985.00	200 x 200	1.159	0.20 x 0.60 x 0.60	CF2	
23	sta. 0+991.00	200 x 200	1.439	0.20 x 0.60 x 0.60	CF2	
24	sta. 0+997.00	200 x 200	1.615	0.20 x 0.60 x 0.60	CF2	
25	sta. 1+003.00	200 x 200	1.708	0.20 x 0.60 x 0.60	CF2	13°06'30.3"N 123°56'15.8"E
26	sta. 1+009.00	200 x 200	1.801	0.20 x 0.60 x 0.60	CF2	
27	sta. 1+015.00	200 x 200	1.895	0.20 x 0.60 x 0.60	CF2	
28	sta. 1+021.00	200 x 200	1.887	0.20 x 0.60 x 0.60	CF2	
29	sta. 1+027.00	200 x 200	1.517	0.20 x 0.60 x 0.60	CF2	
30	sta. 1+033.00	200 x 200	1.148	0.20 x 0.60 x 0.60	CF2	

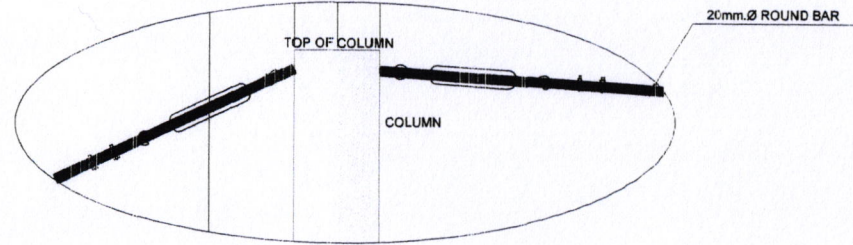
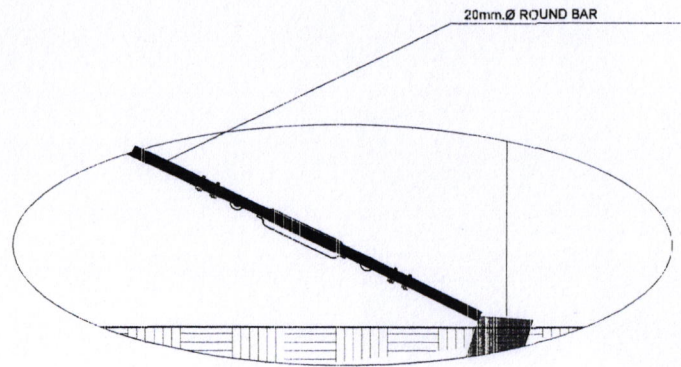


SORSOGON CITY CITY ENGINEERING OFFICE	PROJECT TITLE :	DRAWN BY :	RECOMMENDED BY :	APPROVED BY :	SHEET CONTENT :	SHEET NO. :
	PROPOSED REHABILITATION/ IMPROVEMENT OF LEVEL II POTABLE WATER SYSTEM LOC: BRGY. STO. NIÑO, BACON DISTRICT, SORSOGON CITY	<i>[Signature]</i> ERWIN D. EQUIPADO CONST. & MAINT. GEN. FOREMAN	<i>[Signature]</i> ROEL D. DAVILA, CRMP CITY ENGINEER	<i>[Signature]</i> HON. MA. ESTER E. HAMOR CITY MAYOR	AS SHOWN	

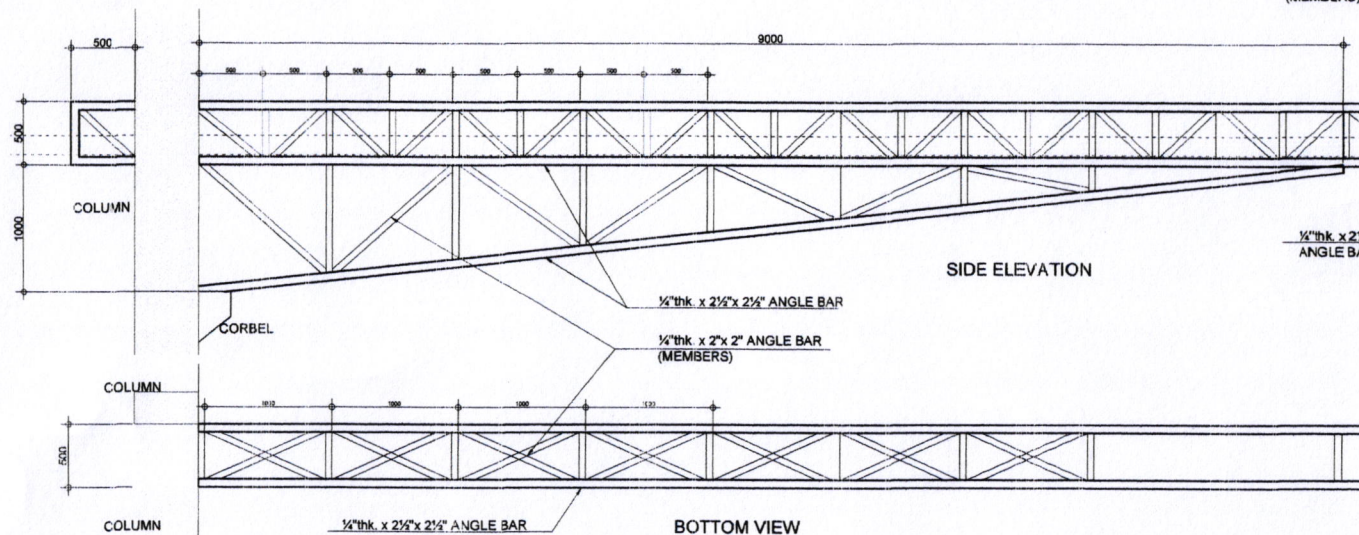


SORSOGON CITY <b>CITY ENGINEERING OFFICE</b>	PROJECT TITLE :	DRAWN BY :	RECOMMENDED BY :	APPROVED BY :	SHEET CONTENT :	SHEET NO. :
	PROPOSED REHABILITATION/ IMPROVEMENT OF LEVEL II POTABLE WATER SYSTEM LOC: BRGY. STO. NIÑO, BACON DISTRICT, SORSOGON CITY	 ERWIN D. EQUIPADO CONST. & MAINT. GEN. FOREMAN	 ROEL D. DIMER, RMP CITY ENGINEER	 HON. MA. ESTER E. HAMOR CITY MAYOR	AS SHOWN	





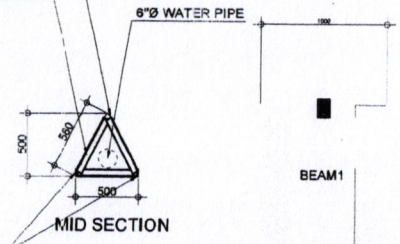
**GUY CONNECTION DETAIL**  
1:30m.



**SIDE ELEVATION**

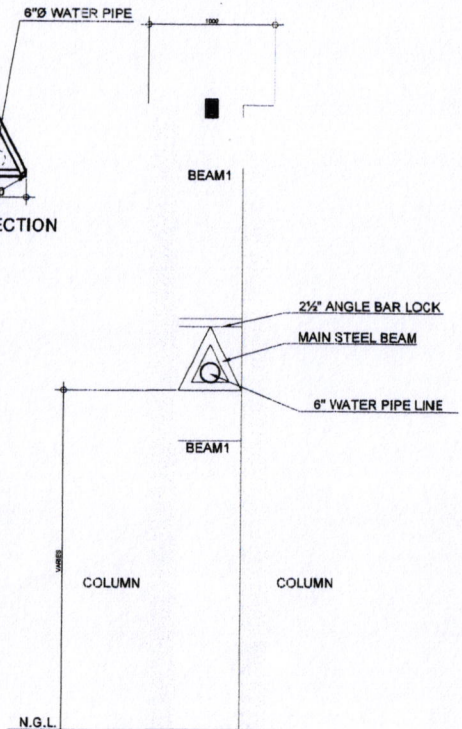
**BOTTOM VIEW**

**1/4"thk x 2 1/2" x 2 1/2" ANGLE BAR**  
**1/4"thk x 2" x 2" ANGLE BAR (MEMBERS)**



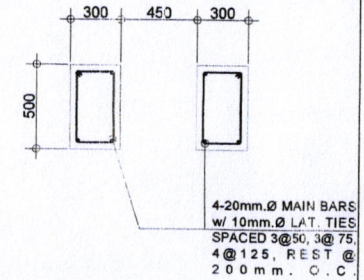
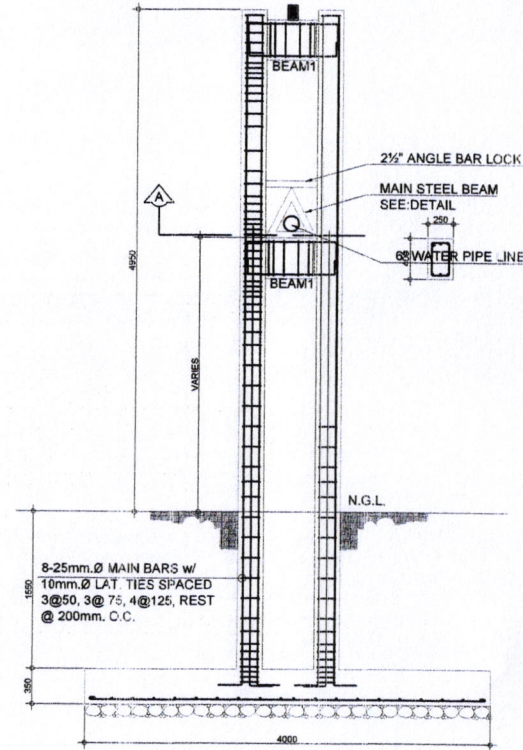
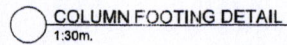
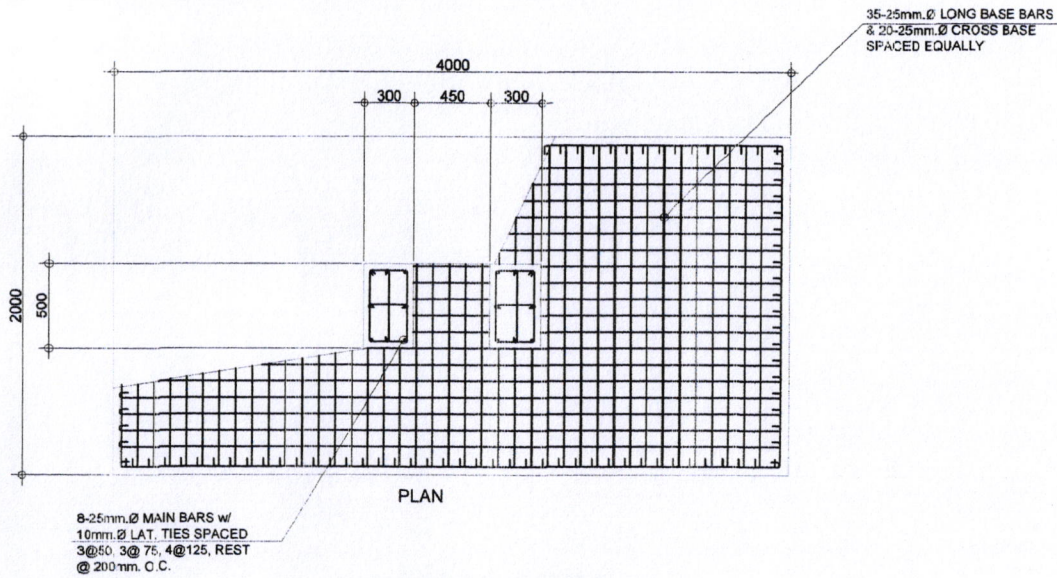
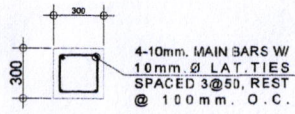
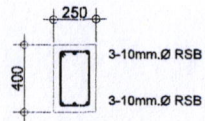
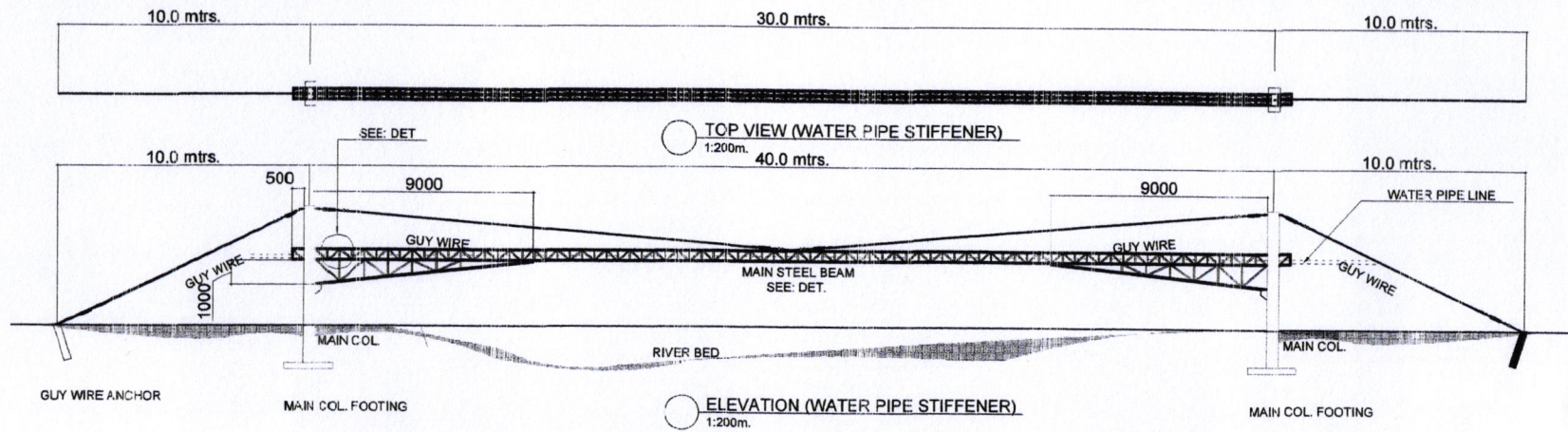
**MID SECTION**

**MAIN STEEL BEAM DETAIL (WATER PIPE STIFFENER)**  
1:40m.



**COLUMN ELEVATION**  
1:40m.

SORSOGON CITY <b>CITY ENGINEERING OFFICE</b>	PROJECT TITLE : <b>PROPOSED REHABILITATION / IMPROVEMENT OF LEVEL II POTABLE WATER SYSTEM</b>	DRAWN BY : 	RECOMMENDED BY : 	APPROVED BY : 	SHEET CONTENT : <b>AS SHOWN</b>	SHEET NO. :
	LOC : BRGY. STO. NIÑO, BACON DISTRICT, SORSOGON CITY	<b>ERWIN D. EQUIPADO</b> CONST. & MAINT. GEN. FOREMAN	<b>ROEL D. DOLAR, JR / RMP</b> CITY ENGINEER	<b>HON. MA. ESTELA E. HAMOR</b> CITY MAYOR		



SORSOGON CITY <b>CITY ENGINEERING OFFICE</b>	PROJECT TITLE :	DRAWN BY :	RECOMMENDED BY :	APPROVED BY :	SHEET CONTENT :	SHEET NO. :
	PROPOSED REHABILITATION/ IMPROVEMENT OF LEVEL II POTABLE WATER SYSTEM	<i>[Signature]</i>		<i>[Signature]</i>	AS SHOWN	
	LOC : BRGY. STD. NINO, BACON DISTRICT, SORSOGON CITY	ERWIN D. EQUIPADO CONST. & MAINT. GEN. FOREMAN	ROEL D. DOMER, CSY RMP CITY ENGINEER	HON. MA. ESTER E. HAMOR CITY MAYOR		