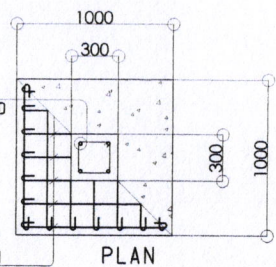
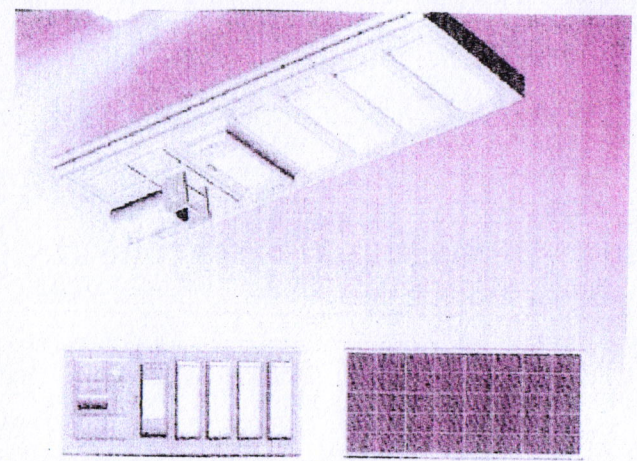
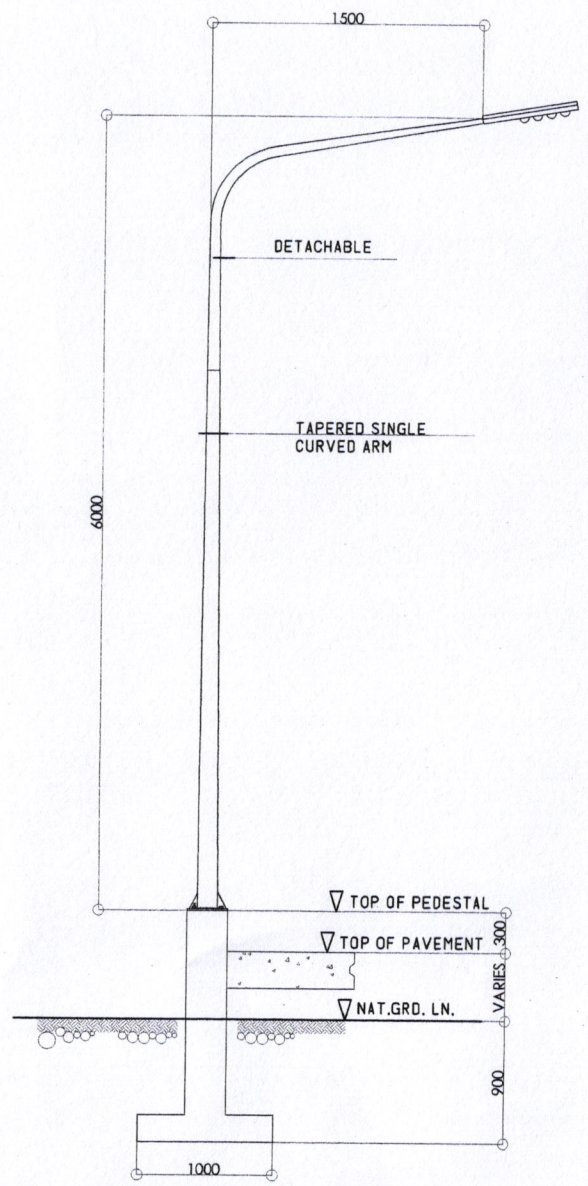
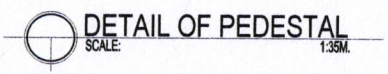
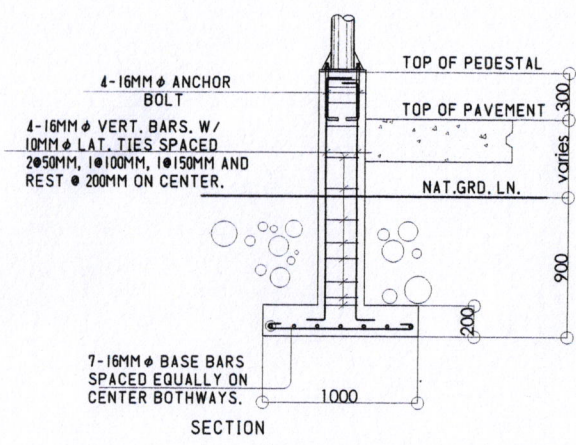



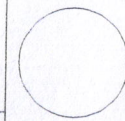
4-16MM ϕ VERT. BARS. W/
10MM ϕ LAT. TIES SPACED
2@50MM, 1@100MM, 1@150MM AND
REST @ 200MM ON CENTER.



7-16MM ϕ BASE BARS
SPACED EQUALLY ON
CENTER BOTHWAYS.



LD-YT100W

PREPARED FROM:	PROJECT TITLE:	CADD BY:	RECOMMENDED BY:	APPROVED BY:	SHEET NO.
 <p>SORSOGON CITY ENGINEER'S OFFICE</p>	<p>PROVISION OF RENEWABLE ENERGY BASED ELECTRIFICATION</p>	<p>ROWANFARBELLA DRAFTSMAN III</p>	<p>ROEL D. DOMER C.E./RMP CITY ENGINEER</p>	<p>HON. MA. ESTER E. HAMOR CITY MAYOR</p>	
	<p>LOCATION: SITIO CANARUM, STA. TERESITA, OLD BATO, BRGY. BATO, BACON DIST., SORSOGON CITY.</p>				