
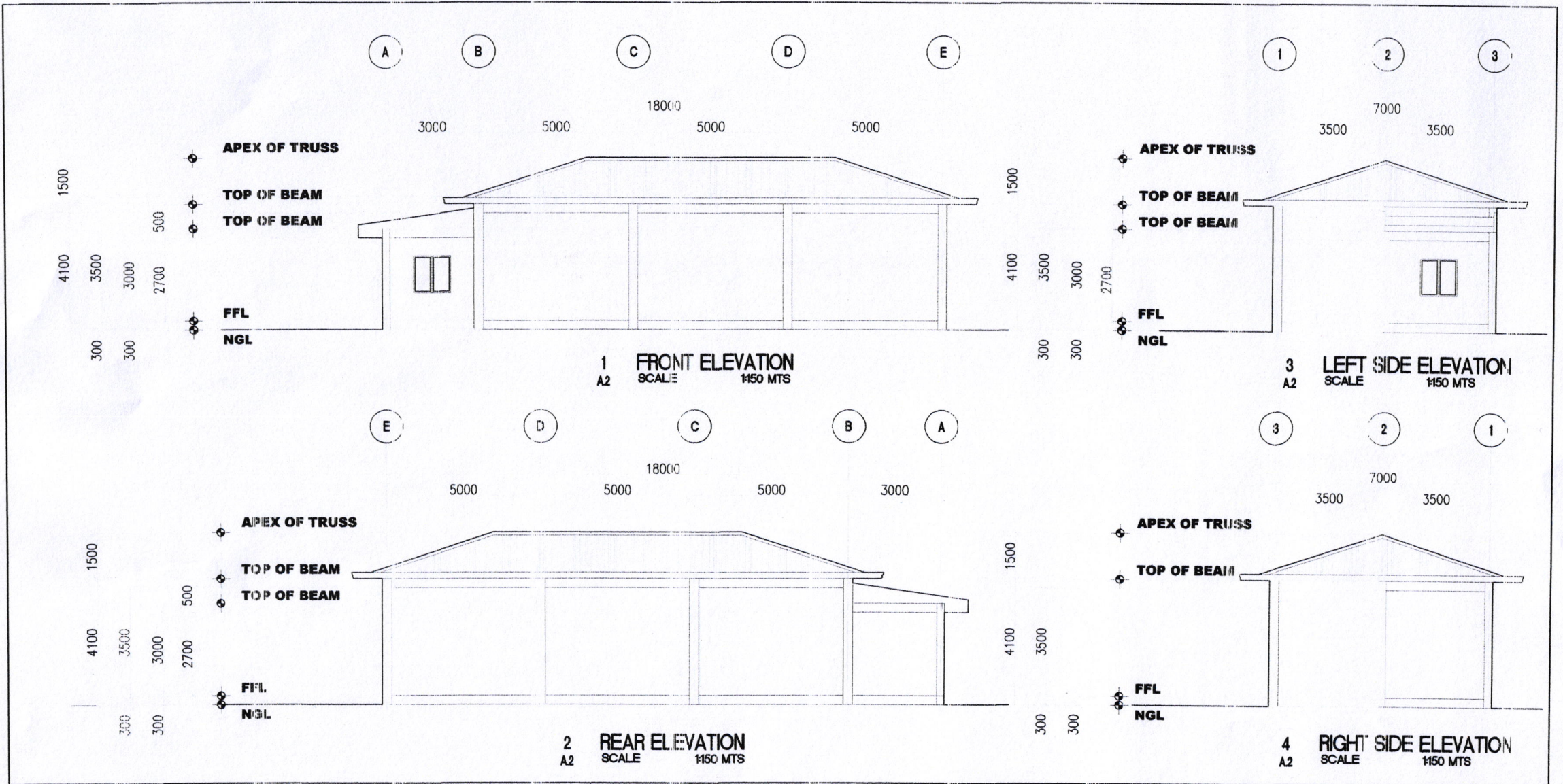



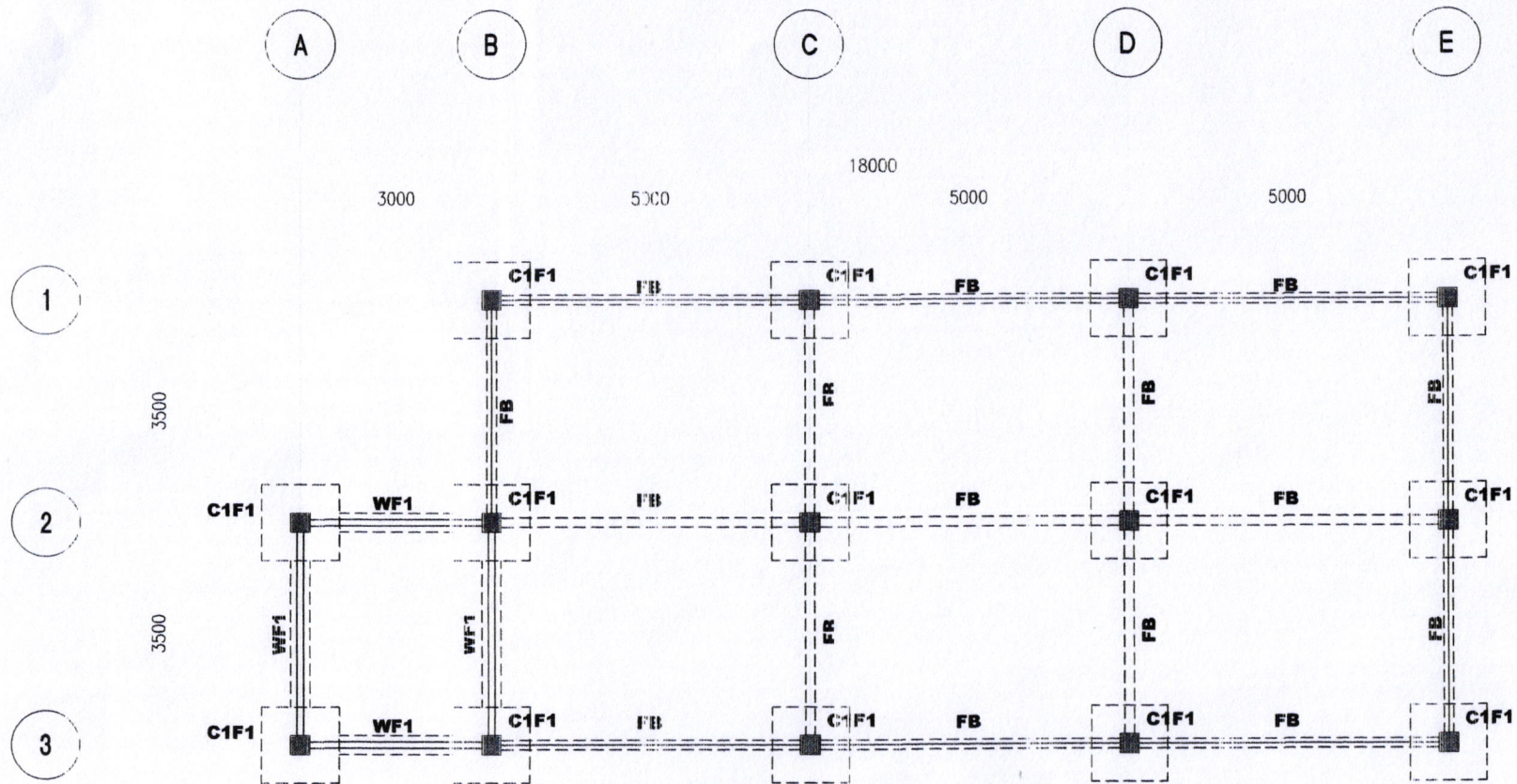
1 FLOOR PLAN
A.1 SCALE 1:100 MTS

1 DOOR AND WINDOW SCHEDULE
A.1 SCALE 1:100 MTS


 SORSOGON CITY CITY ENGINEER'S OFFICE	TITLE: REHAB AND CONSTRUCTION OF FARM MACHINERY AND EQUIPMENT SHED LOCATION: BIBINCAHAN, EAST DISTRICT, SORSOGON CITY	DRAWN: <i>maria lara j. salabsena, uap</i> ARCHITECT I	RECOMMENDED BY: ROEL D. DOMER C.E. CITY ENGINEER	APPROVED BY: HON. MA. ESTER E. HAMOR CITY MAYOR	SHEET NO. <div style="border: 1px solid black; border-radius: 50%; width: 40px; height: 40px; display: flex; align-items: center; justify-content: center; margin: 0 auto;"> <div style="text-align: center;"> <p>2</p> <p>A.1</p> </div> </div>
--	--	--	--	---	---

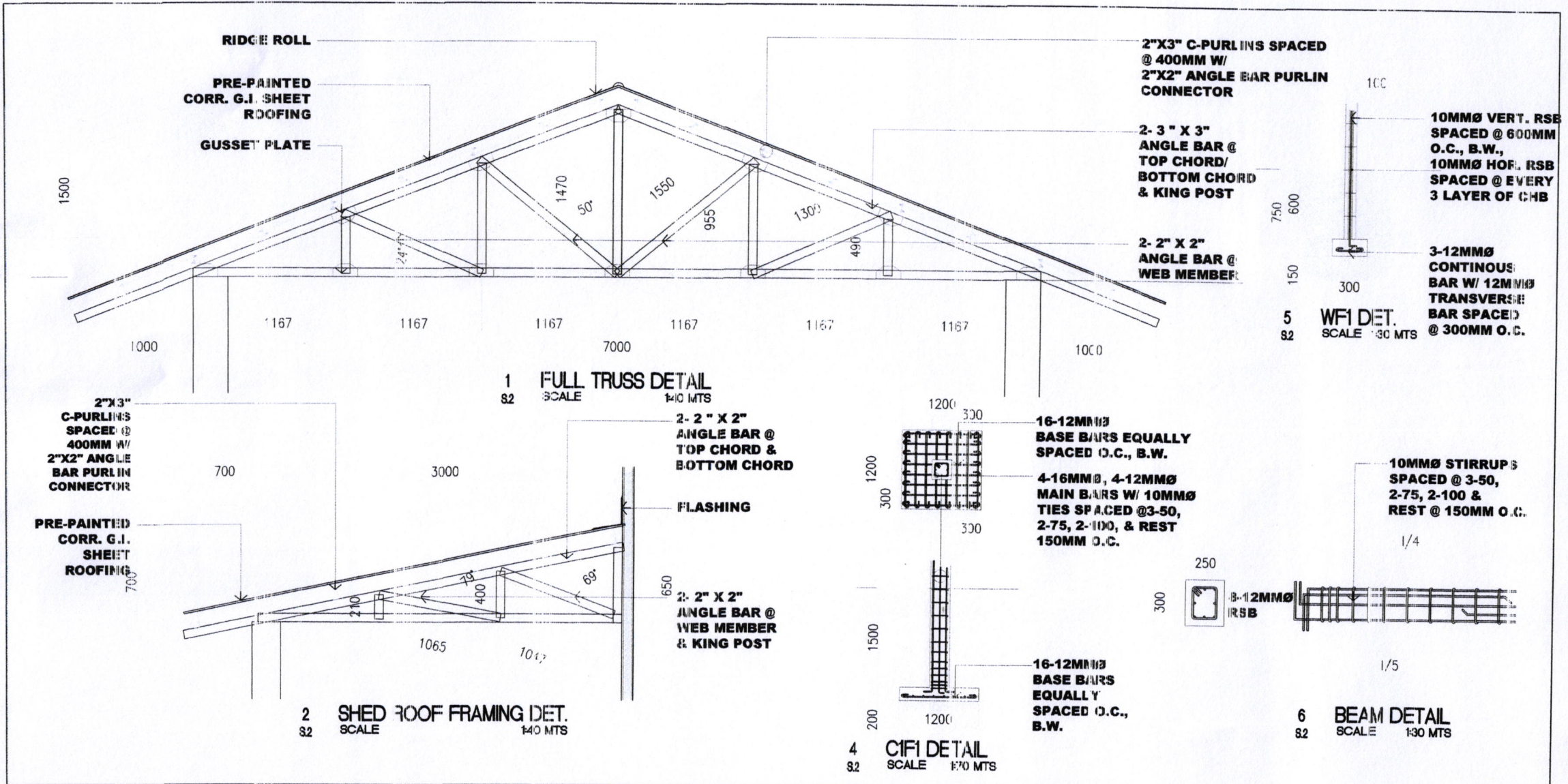



 <p>SORSOGON CITY ENGINEER'S OFFICE</p>	<p>TITLE:</p> <p>REHAB AND CONSTRUCTION OF FARM MACHINERY AND EQUIPMENT SHED</p> <p>LOCATION: BIBINCAHAN, EAST DISTRICT, SORSOGON CITY</p>	<p>DRAWN:</p> <p><i>maria lara p. tabuena, aap</i> ARCHITECT I</p>	<p>RECOMMENDED BY:</p> <p><i>Roel D. Dimer</i> ROEL D. DIMER C.E. CITY ENGINEER</p>	<p>APPROVED BY:</p> <p><i>Hon. Ma. Ester E. Hamor</i> HON. MA. ESTER E. HAMOR CITY MAYOR</p>	<p>SHEET NO.</p> <p>2 A.2</p>
---	---	--	---	--	---

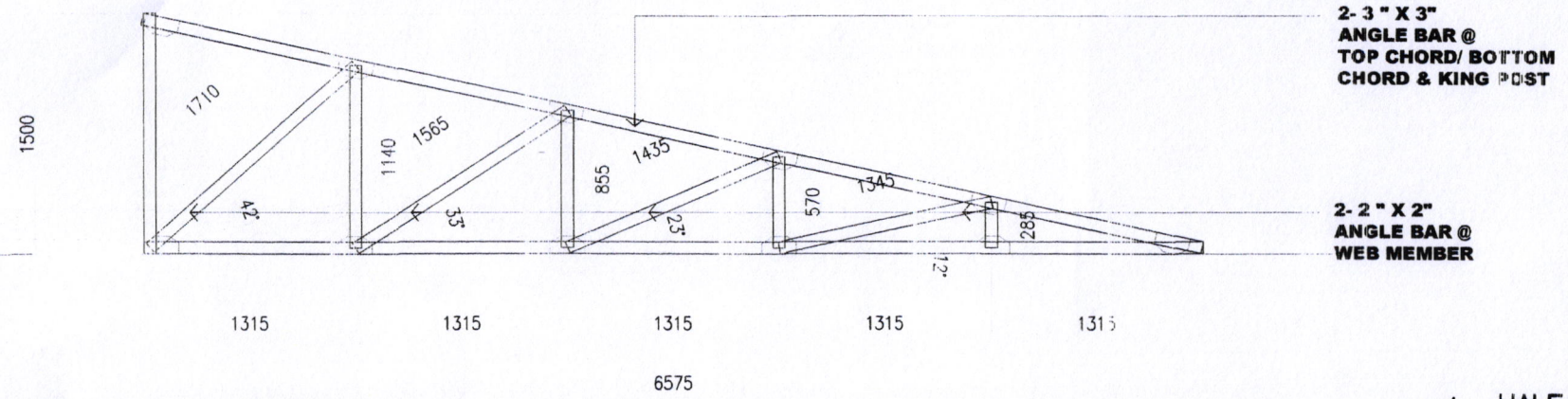


1 FOUNDATION PLAN
 8:1 SCALE 1:100 MTS

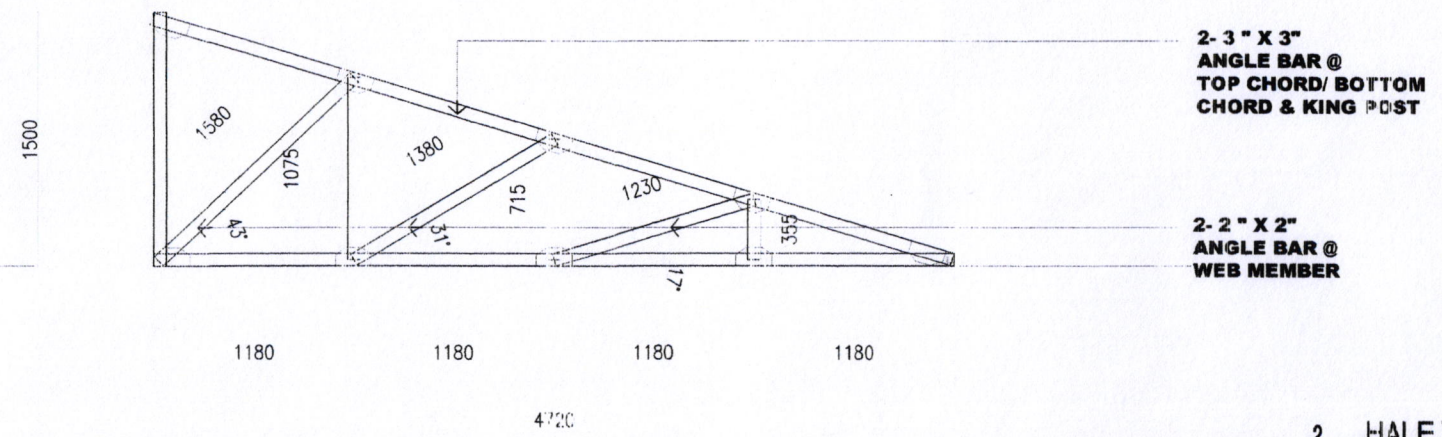
CITY ENGINEER'S OFFICE	TITLE:	DRAWN:	RECOMMENDED BY:	APPROVED BY:	SHEET NO.
 SORSOGON CITY CITY ENGINEER'S OFFICE	<p>REHAB AND CONSTRUCTION OF FARM MACHINERY AND EQUIPMENT SHED</p> <p>LOCATION: BIBINCAHAN, EAST DISTRICT, SORSOGON CITY</p>	<p><i>maria lara</i> <i>colabuena, ucp</i> ARCHITECT I</p>	<p>ROEL D. DOMER C.E. CITY ENGINEER</p>	<p>HON. MA. ESTER E. HAMOR CITY MAYOR</p>	<p>5 S.1</p>




 <p>SORSOGON CITY ENGINEER'S OFFICE</p>	<p>TITLE:</p> <p>REHAB AND CONSTRUCTION OF FARM MACHINERY AND EQUIPMENT SHED</p> <p>LOCATION: BIBINCAHAN, EAST DISTRICT, SORSOGON CITY</p>	<p>DRAWN:</p> <p><i>maria lara maria labuena, uaf</i> ARCHITECT I</p>	<p>RECOMMENDED BY:</p> <p>ROEL D. DOMER C.E. CITY ENGINEER</p>	<p>APPROVED BY:</p> <p>HON. MA. ESTER E. HAMOR CITY MAYOR</p>	<p>SHEET NO.</p> <p>5 S.2</p>
---	---	---	--	---	---

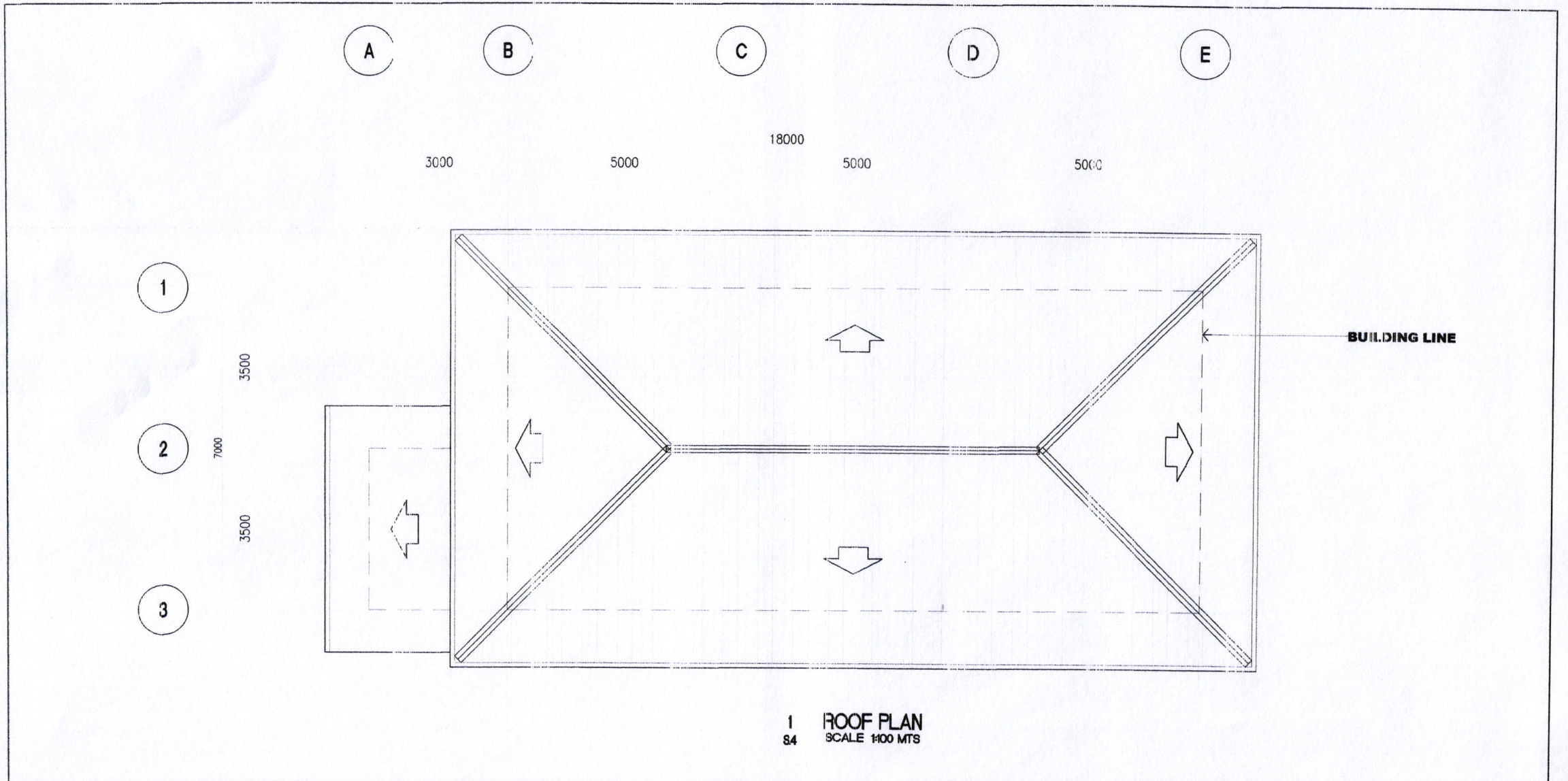



1 HALF TRUSS DETAIL
SCALE 1/40 MTS

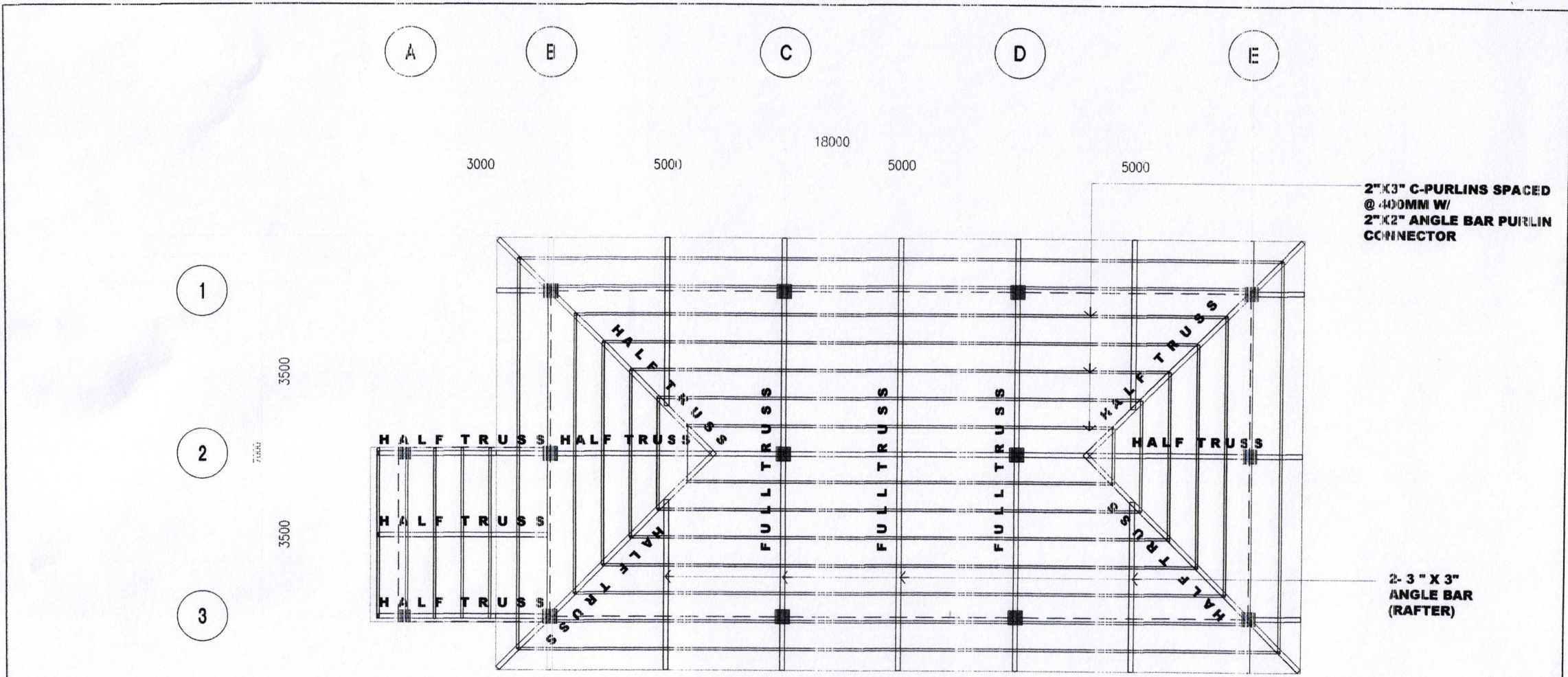


2 HALF TRUSS DETAIL
SCALE 1/40 MTS


CITY ENGINEER'S OFFICE	TITLE:	DRAWN:	RECOMMENDED BY:	APPROVED BY:	SHEET NO.
	<p align="center">REHAB AND CONSTRUCTION OF FARM MACHINERY AND EQUIPMENT SHED</p> <p>LOCATION: BIBINCAHAN, EAST DISTRICT, SORSOGON CITY</p>	<p align="center"><i>maria tara p. murlabuena, uap</i> ARCHITECT I</p>	<p align="center">ROEL D. DOMER C.E. CITY ENGINEER</p>	<p align="center">HON. MA. ESTER E. HAMOR CITY MAYOR</p>	<p align="center">5 S.3</p>



	TITLE: <p style="text-align: center;">REHAB AND CONSTRUCTION OF FARM MACHINERY AND EQUIPMENT SHED</p>	DRAWN: <p style="text-align: center;"><i>maria lara j. malabuena, uap</i> ARCHITECT I</p>	RECOMMENDED BY: <p style="text-align: center;">ROEL D. DOMER C.E. CITY ENGINEER</p>	APPROVED BY: <p style="text-align: center;">HON. MA. ESTER E. HAMOR CITY MAYOR</p>	SHEET NO. <div style="border: 1px solid black; border-radius: 50%; width: 40px; height: 40px; display: flex; align-items: center; justify-content: center; margin: 0 auto;"> <div style="text-align: center;"> 5 S.4 </div> </div>
LOCATION: BIBINCAHAN, EAST DISTRICT, SORSOGON CITY					



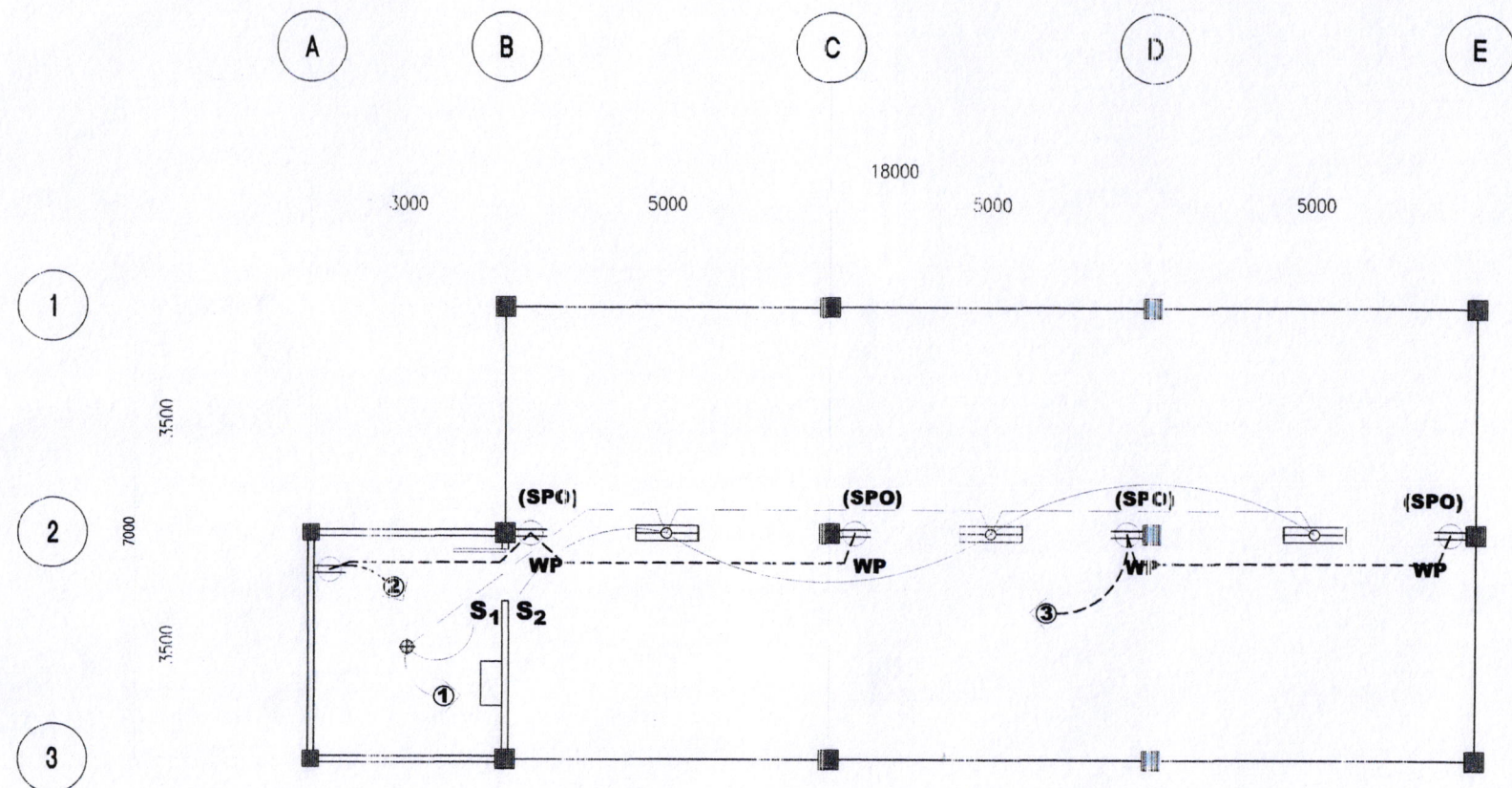
1 ROOF FRAMING PLAN
 S5 SCALE 1:100 MTS

TITLE:	DRAWN:	RECOMMENDED BY:	APPROVED BY:	SHEET NO.
 <p>REHAB AND CONSTRUCTION OF FARM MACHINERY AND EQUIPMENT SHED</p>	<p>LOCATION: BIBINCAHAN, EAST DISTRICT, SORSOGON CITY</p> <p><i>maria laraya malabuena, uaf</i> ARCHITECT I</p>	<p>ROEL D. DOMER, C.E. CITY ENGINEER</p>	<p>HON. MA. ESTER E. HAMOR CITY MAYOR</p>	<p>5 S.5</p>

KEY TO SYMBOLS	
	SERVICE ENTRANCE
	KILOWATT HOUR METER
	PANEL BOARD
	CIRCUIT BREAKER
	CIRCUIT BREAKER
	LIGHTING FIXTURE
	DUPLEX CONVEGENCE OUTLET
	WEATHERPROOF CONVEGENCE OUTLET
	S1 SINGLE LIGHT SWITCH
	S2 DUPLEX SWITCH
	S3 THREE WAY SWITCH
	SWITCH LEG
	LIGHTING FIXTURE
	POWER LINE
	TS TRANSFER SWITCH
	AMPERE
	PANEL BOARD
	LED TUBE LIGHT IN INDUSTRIAL TYPE CASING IP 65, 2'X4'
	WEATHERPROOF SPECIAL PURPOSE CONVEGENCE OUTLET
	WEATHERPROOF 2-GANG SWITCH

ELECTRICAL NOTES:

- ALL ELECTRICAL WORKS HEREIN SHALL COMPLY WITH THE PROVISIONS OF THE LATEST EDITION OF THE NATIONAL ELECTRICAL CODE, THE ORDINANCES AND REGULATIONS OF SORSOGON CITY & SORSOGON ELECTRIC COMPANY, INC.
- TYPE OF SERVICE SHALL BE: 230VOLTS, 1 PHASE, 2 WIRE SYSTEM W/NEUTRAL AND THERE SHALL BE ONLY ONE SERVICE DROP TO THE BUILDING.
- METHOD OF WIRING FOR SERVICE ENTRANCE CONDUCTOR SHALL BE IN RIGID METAL CONDUIT & SHALL BE JOINTED IN POLYVINYL CHLORIDE FOR BOTH EXPOSED AND EMBEDDED WITH PROPER FITTINGS AND SUPPORT.
- ALL MATERIALS AND EQUIPMENTS SHALL BE BRAND NEW AND OF APPROVED TYPE FOR BOTH LOCATION AND PURPOSE INTENDED.
- ALL LIGHTINGS AND CONVEGENCE OUTLET, CIRCUIT HOMERUNS SHALL BE WIRED WITH NOT LESS THAN 20MIL SPECIALLY UNLESS OTHERWISE NOTED ON THE PLAN.
- WHENEVER REQUIRED AND NECESSARY, PULLBOXES AND JUNCTION BOXES OF PROPER SIZES SHALL BE INSTALLED AT CONVENIENT AND CONSISTENT LOCATIONS ALTHOUGH SUCH BOXES ARE NOT SHOWN ON THE PLANS NOR MENTIONED IN THE SPECIFICATIONS.
- MOUNTING HEIGHTS SHALL BE AS FOLLOWS:
 LIGHT SWITCH - 1.5M FROM FLOOR LINE
 DUPLEX C.O. - 0.315M FROM FLOOR LINE / COUNTER
 PANEL BOARD - 1.0M FROM FLOOR LINE.
- ALL OUTDOOR INSTALLATIONS SHALL BE WEATHERPROOF TYPE.
- ALL ELECTRICAL WORKS SHALL BE DONE UNDER THE DIRECT AND IMMEDIATE SUPERVISION OF A LICENSED REGISTERED ELECTRICAL ENGINEER OR A REGISTERED MASTER ELECTRICIAN.



1 ELECTRICAL PLAN
 E1 SCALE 1:100 MTS

TITLE:	DRAWN:	RECOMMENDED BY:	APPROVED BY:	SHEET NO.
REHAB AND CONSTRUCTION OF FARM MACHINERY AND EQUIPMENT SHED LOCATION: BIBINCAHAN, EAST DISTRICT, SORSOGON CITY	maria lara j. labuena, aap ARCHITECT I	ROEL D. DOMER C.E. CITY ENGINEER	HON. MA. ESTER E. HAMOR CITY MAYOR	2 E.1



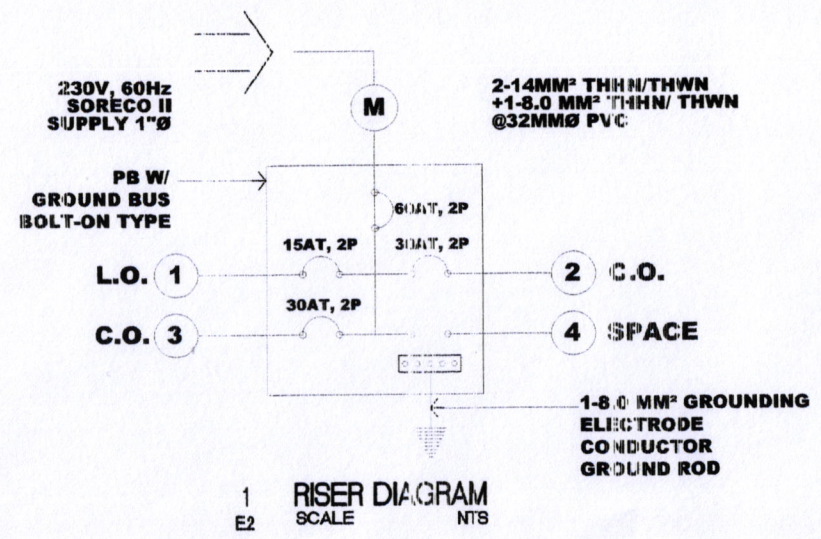
KEY TO SYMBOLS	
	SERVICE ENTRANCE
	KILOWATT HOUR METER
	PANEL HEADER
	CIRCUIT BREAKER
	CIRCUIT BREAKER
	LIGHTING OUTLET
	DUPLEX CONVENIENCE OUTLET
	WEATHER PROOF CONVENIENCE OUTLET
	SINGLE POLE SWITCH
	DUPLEX SWITCH
	THREE POLE SWITCH
	SWITCH
	LIGHTING POINT
	POWER LINE
	TRANSFORMER
	AMPERE
	PANEL BOARD
	LED TUB LIGHT IN INDUSTRIAL TYPE CASING IP 65 EXIM
	WEATHER PROOF SPECIAL PURPOSE CONVENIENCE OUTLET
	WEATHER PROOF 2-GANG SWITCH

SCHEDULE OF LOADS								
CIRCUIT NO.	LOAD DESCRIPTION	NO. OF LOADS	VOLT-AMPERE	VOLT	AMPERE	CB RATING	SIZES	
							WIRES	CONDUITS
1	LIGHTING OUTLET	4	216	230	0.93	15AT, 2P	2-2.0MM ² THHN/THWN CU WIRE	20MMØ PVC
2	CONVENIENCE OUTLET	2	2300	230	10	30AT, 2P	2-5.5MM ² THHN/THWN CU WIRE, 1-5.5 EGC	20MMØ PVC
3	CONVENIENCE OUTLET	3	2300		10	30AT, 2P	2-5.5MM ² THHN/THWN CU WIRE, 1-5.5 EGC	20MMØ PVC
4	SPARE							
	TOTAL CONNECTED	9	4816		5.64	60AT, 2P	2-14.0MM² THHN/THWN CU WIRE	32MMØ PVC

ELECTRICAL NOTES:

- ALL ELECTRICAL WORKS HEREIN SHALL COMPLY WITH THE PROVISIONS OF THE LATEST EDITION OF THE NATIONAL ELECTRICAL CODE, THE RULES & REGULATIONS OF SORSOGON CITY & SORSOGON ELECTRICAL CO. PERMITIVE II.
- TYPE OF SERVICE SHALL BE: 230VOLTS, 1 PHASE, 2 WIRE SYSTEM W/ GND. AND THERE SHALL BE ONLY ONE SERVICE DROP TO THE BUILDING.
- METHOD OF WIRING FOR SERVICE ENTRANCE CONDUCTOR SHALL BE IN RIGID METAL CONDUIT & BRANCH CIRCUITS IN POLYVINYL CHLORIDE PIPE WITH EXPOSED AND EMBEDDED WITH PROPER FITTINGS AND SUPPORT.
- ALL MATERIALS AND EQUIPMENTS SHALL BE BRAND NEW AND OF APPROVED TYPE FOR BOTH LOCATIONS PURPOSE INTENDED.
- ALL LIGHTINGS AND CONVENIENCE OUTLET, CIRCUIT HOMERUNS SHALL BE WIRED WITH NOT LESS THAN 20MM² RESPECTIVELY UNLESS OTHERWISE SPECIFIED ON THE PLAN.
- WHENEVER REQUIRED & NECESSARY, PULLBOXES AND JUNCTION BOXES OF PROPER SIZES SHALL BE INSTALLED AT CONVENIENT AND CONSIDERABLE LOCATIONS ALTHOUGH SUCH BOXES ARE NOT SHOWN ON THE PLANS NOR MENTIONED IN THE SPECIFICATIONS.
- Mounting heights shall be as follows:
LIGHT SWITCH - 1.5M FROM FIN. FLOOR LINE
DUPLEX C.O. - 0.3 M FROM FIN. FLOOR LINE / COUNTER
PANEL BOARD - 1.8M FROM FIN. FLOOR LINE.
- ALL OUTDOOR INSTALLATIONS SHALL BE WEATHERPROOF TYPE.
- ALL ELECTRICAL WORKS SHALL BE DONE UNDER THE DIRECT AND IMMEDIATE SUPERVISION OF A QUALIFIED LICENSED REGISTERED ELECTRICAL ENGINEER OR A REGISTERED MASTER ELECTRICIAN.

$I_T = [(20.94) \times (0.85)] \times 1.25$
 $I_T = 22.24 \text{ AMPS}$
THEREFORE: USE 60 AT, 2P @ 2-14MM² THHN/THWN +1-8.0² THHN/ THWN @ 32MMØ PVC



<p>SORSOGON CITY ENGINEER'S OFFICE</p>	TITLE:	DRAWN:	RECOMMENDED BY:	APPROVED BY:	SHEET NO.
	<p>REHAB AND CONSTRUCTION OF FARM MACHINERY AND EQUIPMENT SHED</p> <p>LOCATION: BIBINCAHAN, EAST DISTRICT, SORSOGON CITY</p>	<p><i>maria lara ...</i> ARCHITECT I</p>	<p>ROEL D. DOMER, C.E. CITY ENGINEER</p>	<p>HON. MA. ESTER E. HAMOR CITY MAYOR</p>	<p>2 E.1</p>