

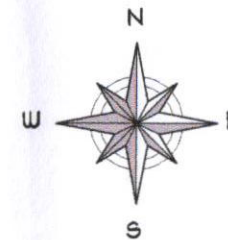


S I T E D E V E L O P M E N T P L A N



P E R S P E C T I V E

TABLE OF CONTENTS :	
A-01	• LOCATION MAP • TABLE OF CONTENTS • SITE DEVELOPMENT PLAN • PERSPECTIVE
A-02	• ARCHITECTURAL FLOOR PLAN
A-03	• ARCHITECTURAL ROOF PLAN • ROLL UP ELEVATION
A-03	• EXTERIOR ELEVATION
A-03	• EXTERIOR ELEVATION
S-01	• FOUNDATION PLAN
S-02	• ROOF FRAMING @ PARKING AREA
S-03	• ROOF FRAMING @ STORAGE AREA
S-04	• STRUCTURAL DETAIL
E-01	• ELECTRICAL GENERAL NOTES • ELECTRICAL LEGEND • ELECTRICAL PLAN AND DETAIL



REPUBLIC OF THE PHILIPPINES
OFFICE OF THE BUILDING OFFICIAL
SORSOGON CITY

LAND USE AND ZONING

LINE AND GRADE

ARCHITECTURAL

STRUCTURAL

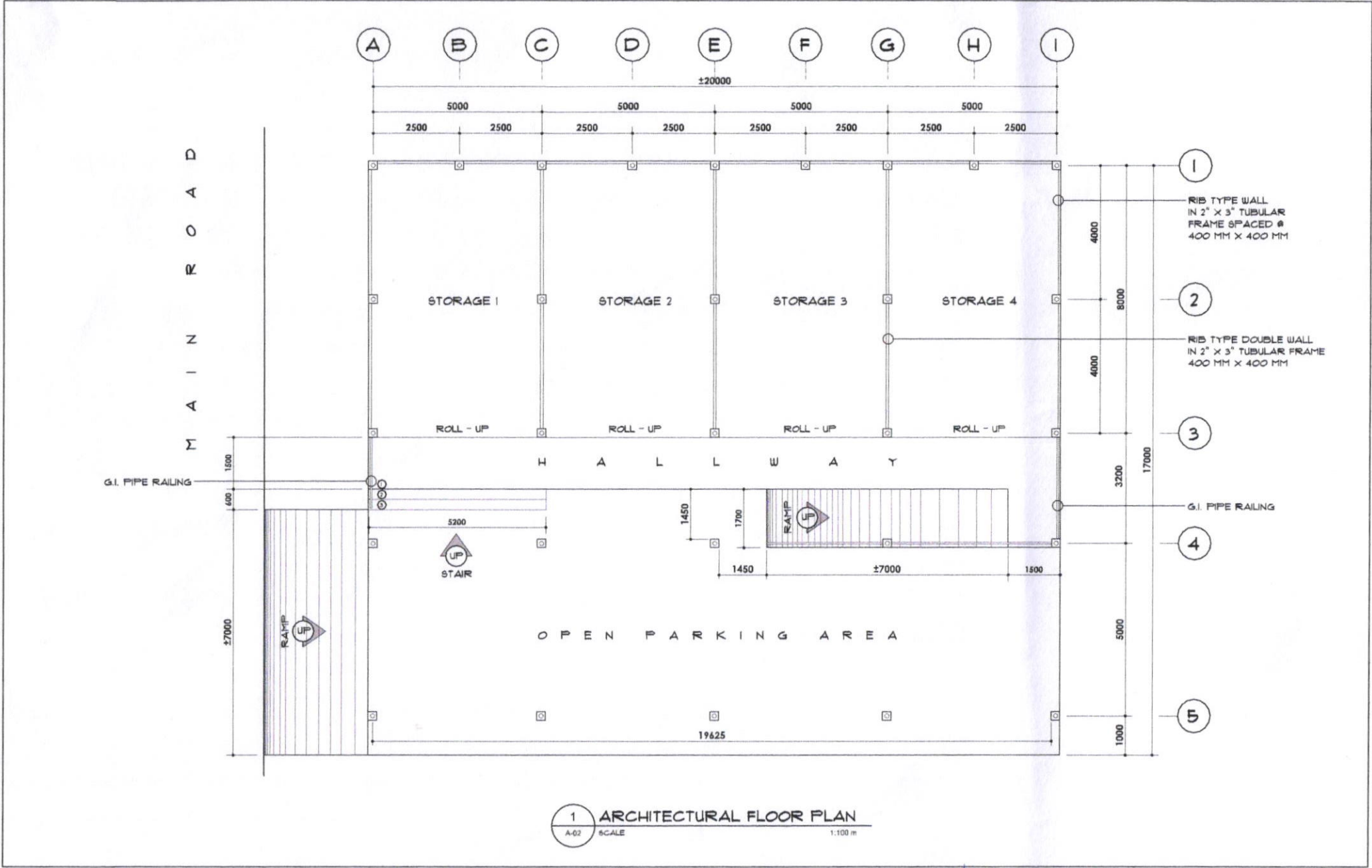
PLUMBING

SANITARY

ELECTRICAL

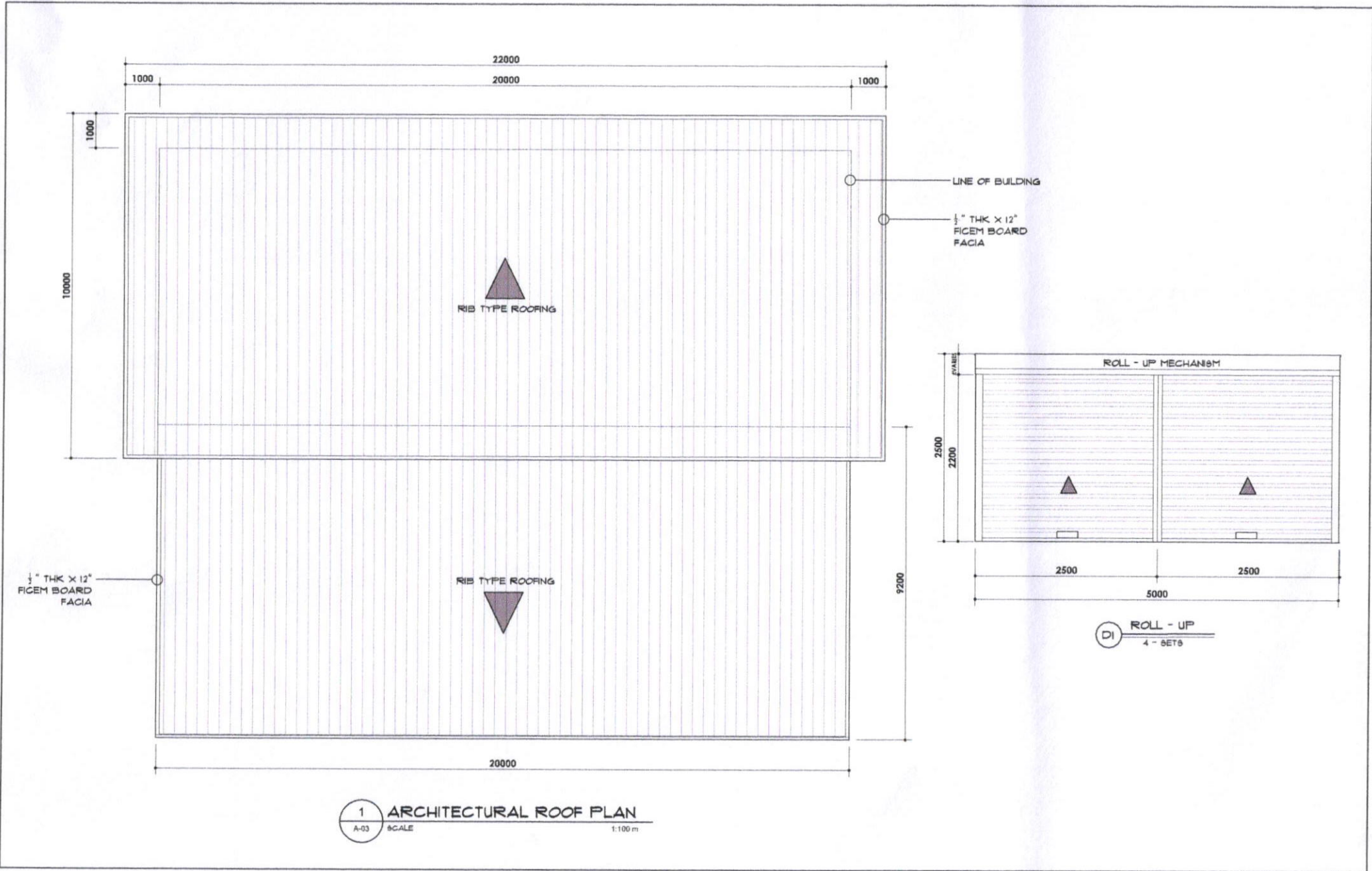
MECHANICAL

REC. NO. : FOR NO. : VALIDITY : ISSUED ON : ISSUED AT : TITLE : MAPA NO. :	REPUBLIC ACT 9206 DRAWING AND SPECIFICATIONS DULY SIGNED, STAMPED OR SEALED AS INSTRUMENT OF SERVICE ARE THE PROPRIETARY AND DOCUMENTS OF THE ARCHITECT OR AUTHOR AND NOT TO BE REPRODUCED OR COPIED IN ANY MANNER WITHOUT THE WRITTEN CONSENT OF THE ARCHITECT OR AUTHOR OF SAID DOCUMENTS TO BE OBTAINED BY THE REPUTATION OF AND FOR OTHER PROJECTS OR BUILDING, WHETHER EXECUTED WHOLLY OR IN WHOLE.	REVISION : <table border="1"> <thead> <tr> <th>NO.</th> <th>DATE</th> <th>REVISION BY</th> </tr> </thead> <tbody> <tr><td> </td><td> </td><td> </td></tr> <tr><td> </td><td> </td><td> </td></tr> <tr><td> </td><td> </td><td> </td></tr> </tbody> </table>	NO.	DATE	REVISION BY										PROJECT TITLE : CONSTRUCTION OF STORAGE BUILDING LOCATION : @ CITY HALL COMPOUND, BRGY. CAMELAN EAST DIST. SORSOGON CITY	RECOMMENDED BY : ROEL D. BOMER, C.E. / RMP CITY ENGINEER	APPROVED BY : MALESTER E. HAMOR CITY MAYOR	SHEET CONTENT'S : AS - SHOWN	DESIGNED : DRAWN : CHECKED : DATE : PROJECT NO. :	SHEET NO. : A-01 ARCHITECTURAL	
NO.	DATE	REVISION BY																			



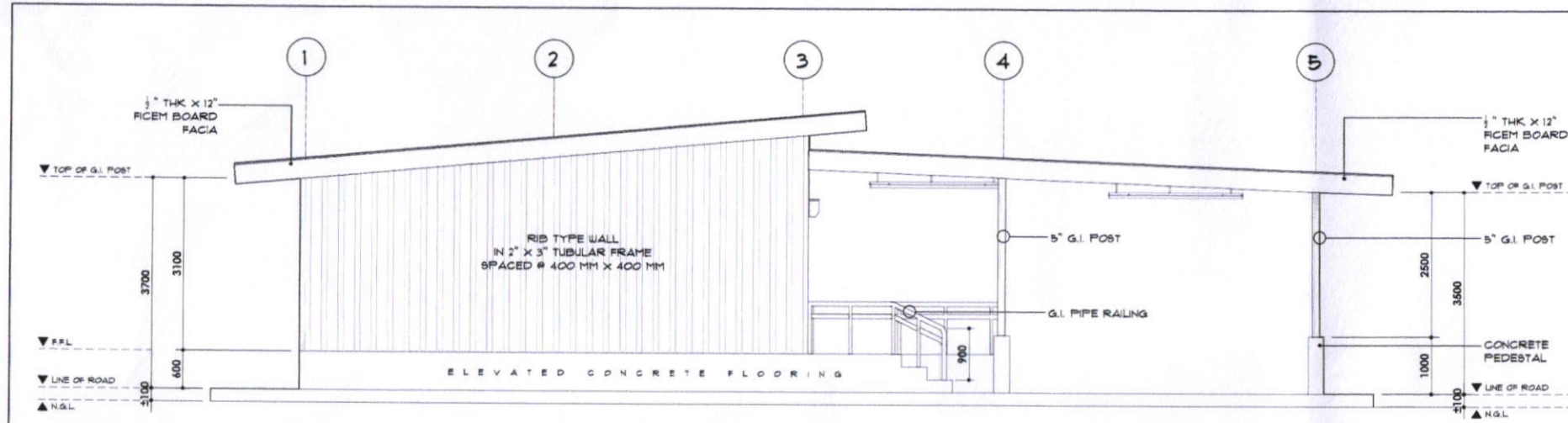
1 ARCHITECTURAL FLOOR PLAN
 A-02 SCALE 1:100 m

PROJ. NO. : PTR. NO. : VARIETY : ISSUED ON : ISSUED AT : DR. : REVISION :	REPUBLIC ACT 9206 DRAWINGS AND SPECIFICATIONS ONLY, SIGNED, STAMPED ON SCALES AS INSTRUMENT OF SERVICE AND THE PROPERTIES AND DOCUMENTS OF THE ARCHITECT OR AUTHOR IN WRITING THE CLIENTS FOR WHICH THEY ARE MADE AS EXPLICIT ON NOT. IT SHALL BE UNLAWFUL FOR ANY PERSON, WITHOUT THE WRITTEN CONSENT OF THE ARCHITECT OR AUTHOR OF SAID DOCUMENTS TO DUPLICATE OR TO MAKE COPIES OF SAID DOCUMENTS FOR USE IN THE REPRODUCTION OF AND FOR OTHER PROJECTS OR BUILDINGS, WHETHER ERECTED WHOLLY OR IN PART.	REVISION : DATE : REVISION BY :	PROJECT TITLE : CONSTRUCTION OF STORAGE BUILDING LOCATION : @ CITY HALL COMPOUND, BREV. CABE-AN, EAST DIST. SORBOGON CITY	RECOMMENDED BY : ROEL M. DOMER, C.E. / RMP CITY ENGINEER	APPROVED BY : MA. ESTER E. HAMOR CITY MAYOR	SHEET CONTENT'S : AS - SHOWN	DRAWING : CHECKED : DATE : PROJECT NO. :	SHEET NO. : A-02 ARCHITECTURAL	
---------------------------------------------------------------------------------------------	----------------------------------------------------------------------------------------------------------------------------------------------------------------------------------------------------------------------------------------------------------------------------------------------------------------------------------------------------------------------------------------------------------------------------------------------------------------------------------------------------------------------------------------	---------------------------------------	--------------------------------------------------------------------------------------------------------------------------------------------------------	-----------------------------------------------------------------------	----------------------------------------------------------	----------------------------------------	---------------------------------------------------	---------------------------------------------	--

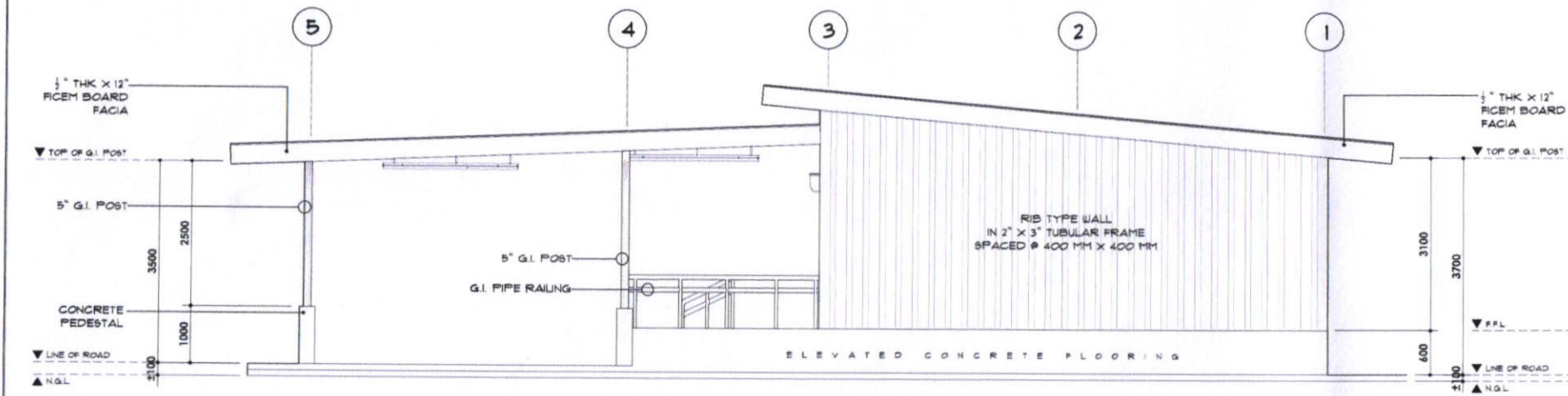


1 ARCHITECTURAL ROOF PLAN
 A-03 SCALE 1:100 m

PROJ. NO. : P/R NO. : VARIETY : DRAWN BY : CHECKED AT : DATE : APPROVED :	REPUBLIC ACT 5456 DRAWINGS AND SPECIFICATIONS ONLY SIGNED, STAMPED OR SEALED AS REQUIREMENT OF SERVICE AND THE PROPERTIES AND DOCUMENTS OF THE ARCHITECT OR AUTHOR INTENDS THE OBJECT FOR WHICH THEY ARE MADE BE SET ASIDE OR NOT IT SHALL BE UNLAWFUL FOR ANY PERSON, WITHOUT THE WRITTEN CONSENT OF THE ARCHITECT OR AUTHOR OF SAID DOCUMENTS TO REPRODUCE OR TO MAKE COPIES OF SAID DOCUMENTS FOR USE IN THE EXECUTION OF AND FOR OTHER PROJECTS OR BUILDINGS, WHETHER EXECUTED WHOLLY OR IN WHOLE.	REVISION : DATE : REVISED BY :	PROJECT TITLE : CONSTRUCTION OF STORAGE BUILDING LOCATION : @ CITY HALL COMPOUND, SINGY, CASIGUAN, EAST DIST., SOROGON CITY	RECOMMENDED BY : ROLA DOMIN, C.E. / RMP CITY ENGINEER	APPROVED BY : MA. ESTER E. HAMOR CITY MAYOR	SHEET CONTENT'S : AS - SHOWN	DESIGNED : DRAWN : CHECKED : DATE : PROJECT NO. :	SHEET NO. : A-03 ARCHITECTURAL	
---------------------------------------------------------------------------------------------	-----------------------------------------------------------------------------------------------------------------------------------------------------------------------------------------------------------------------------------------------------------------------------------------------------------------------------------------------------------------------------------------------------------------------------------------------------------------------------------------------------------	--------------------------------------	------------------------------------------------------------------------------------------------------------------------------------------	--------------------------------------------------------------------	----------------------------------------------------------	---------------------------------	---------------------------------------------------------------	---------------------------------------------	--

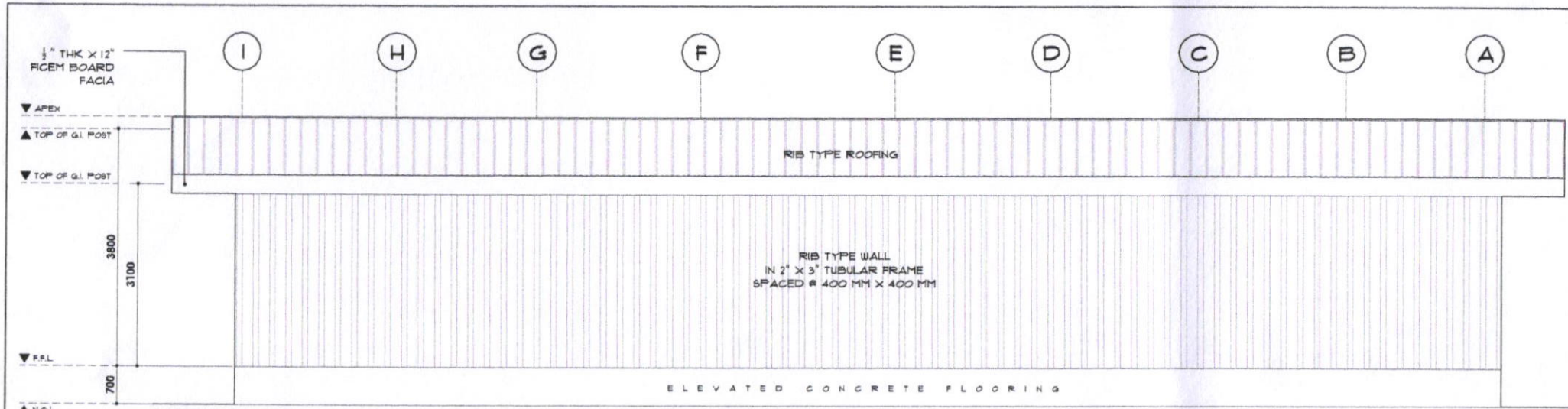


1 FRONT VIEW ELEVATION
A-03 SCALE 1:70 m

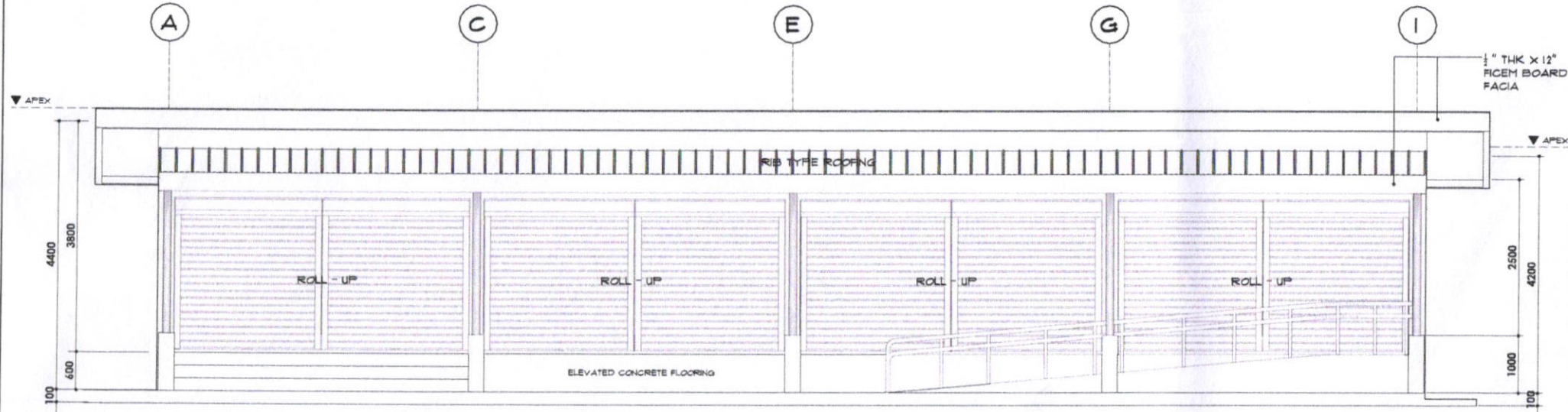


2 REAR VIEW ELEVATION
A-03 SCALE 1:70 m

SPEC. NO.: DATE: DRAWN BY: CHECKED BY: DATE: PROJECT NO.:	REPUBLIC ACT 9266 DRAWINGS AND SPECIFICATIONS ONLY ISSUED, STAMPED OR SEALED AS INSTRUMENT OF SERVICE ARE THE PROPERTY AND DOCUMENTS OF THE ARCHITECT OR AUTHORITY OWNING THE PROJECT FOR WHICH THEY ARE MADE IS EXECUTED ON. IT SHALL BE UNLAWFUL FOR ANY PERSON, WITHOUT THE WRITTEN CONSENT OF THE ARCHITECT OR AUTHORITY OF SAID DOCUMENTS TO DUPLICATE OR TO MAKE COPIES OF SAID DOCUMENTS FOR USE IN THE EXECUTION OF ANY OTHER PROJECTS OR BUILDING, WHETHER EXECUTED PARTLY OR IN WHOLE.	REVISION: DATE: _____ NUMBER BY: _____	PROJECT TITLE: CONSTRUCTION OF STORAGE BUILDING LOCATION: @ CITY HALL COMPOUND, BRGY. GARDEN, EAST DIST., SOCCOGON CITY	RECOMMENDED BY: ROEL D. DOMESTICO, C.E. / RMP CIVIL ENGINEER	APPROVED BY: MA. ESTER E. HAMOR CITY MAYOR	SHEET CONTENTS: AS - SHOWN	DESIGN: CHECKED: DATE: PROJECTING:	SHEET NO.: A-04 ARCHITECTURAL	
--------------------------------------------------------------------------	------------------------------------------------------------------------------------------------------------------------------------------------------------------------------------------------------------------------------------------------------------------------------------------------------------------------------------------------------------------------------------------------------------------------------------------------------------------------------------------------------------	----------------------------------------------	--------------------------------------------------------------------------------------------------------------------------------------	---------------------------------------------------------------------------	---------------------------------------------------------	-------------------------------	---------------------------------------------	--------------------------------------------	--

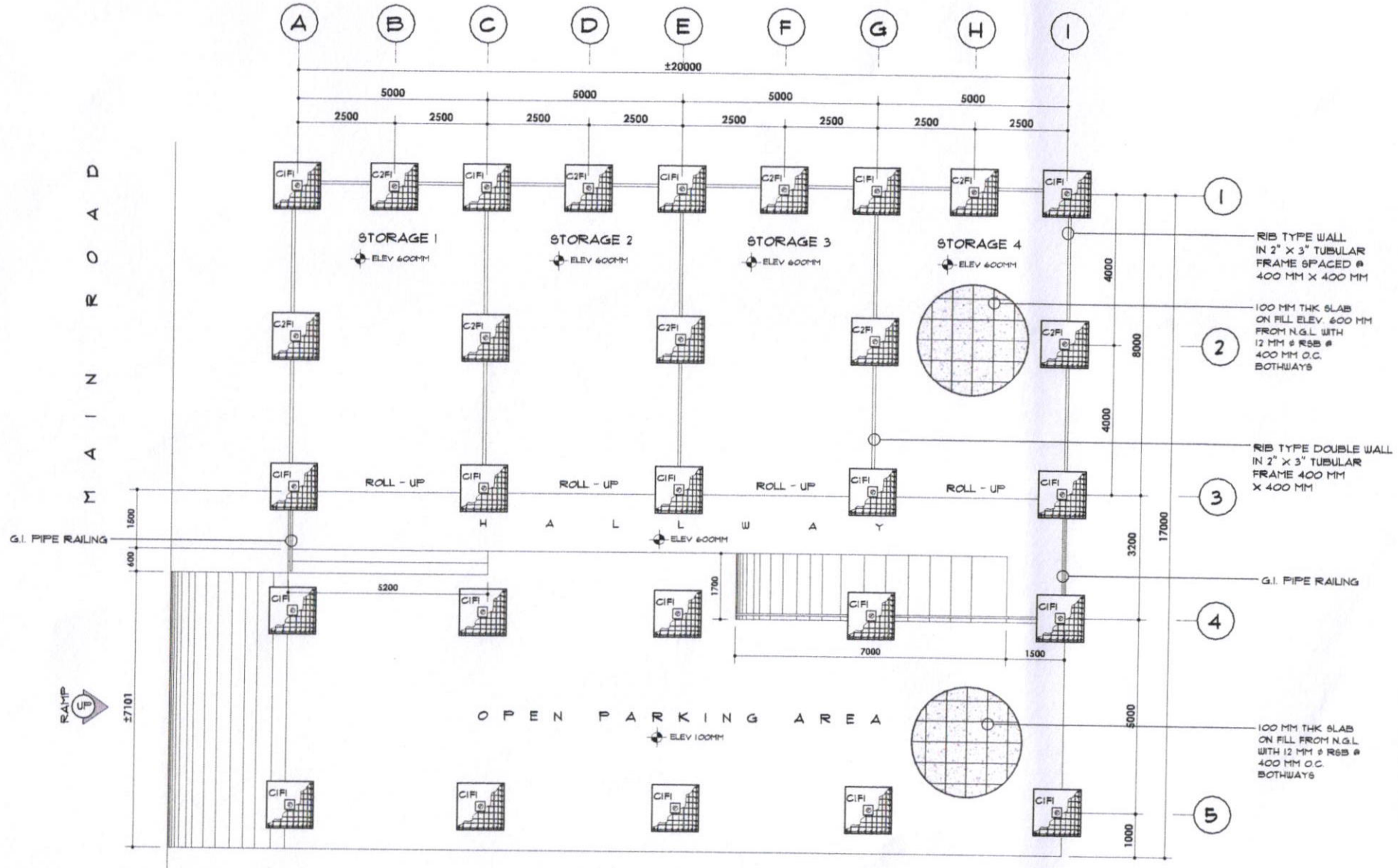


1 RIGHT SIDE ELEVATION
A-04 SCALE 1:70 m



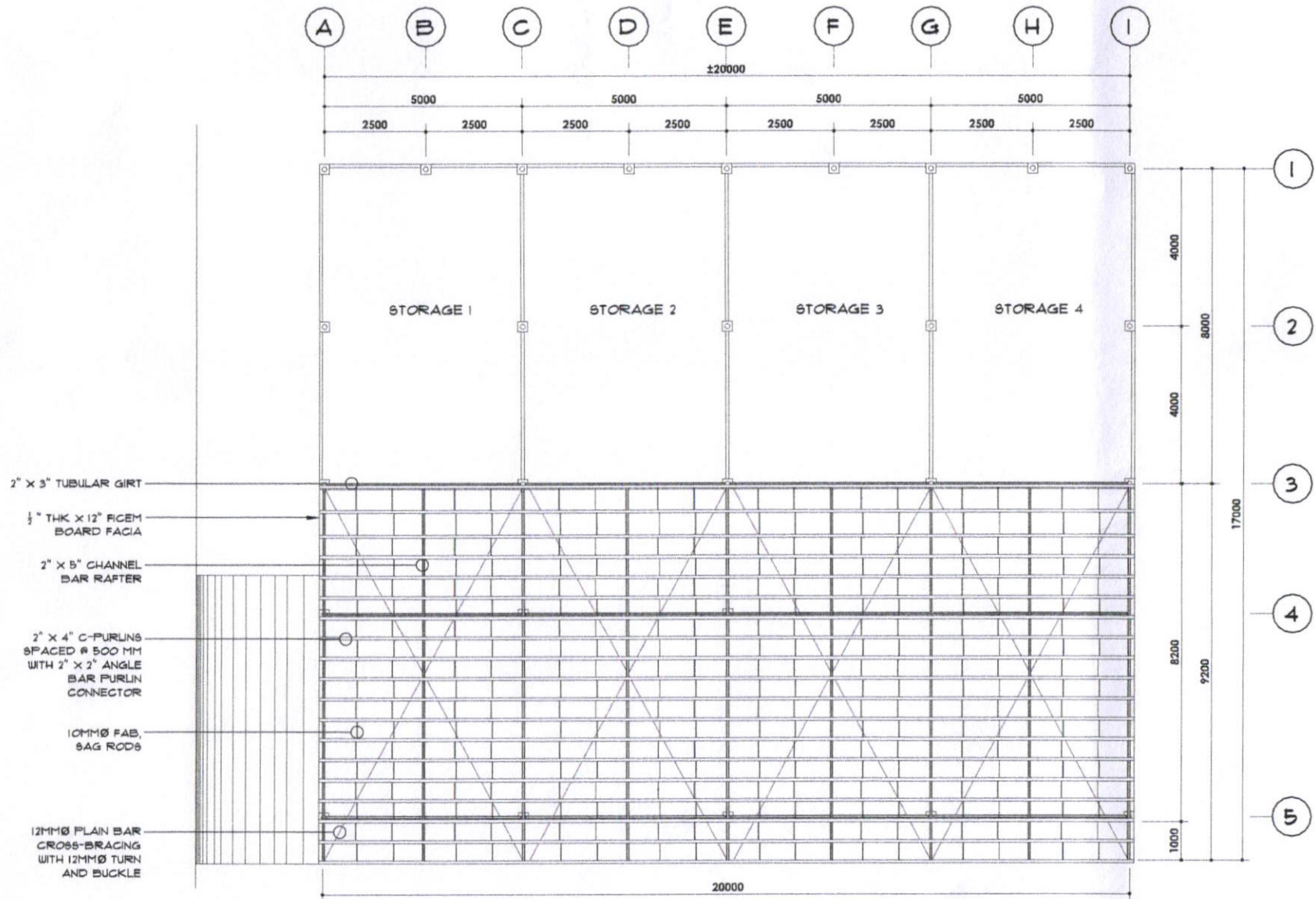
2 LEFT SIDE ELEVATION
A-04 SCALE 1:70 m

INC. NO. : PPR NO. : VALIDITY : ISSUED OR : REVISED AT : DR. : WARD NO. :	REPUBLIC ACT 9208 DRAWINGS AND SPECIFICATIONS DULY SIGNED, STAMPED OR SEALED AS INSTRUMENT OF SERVICE ARE THE PROPERTY AND DOCUMENTS OF THE ARCHITECT OR AUTHOR WHATEVER THE OBJECT FOR WHICH THEY ARE MADE. NO REPRODUCTION OR NOT IT SHALL BE UNLAWFUL FOR ANY PERSON, WITHOUT THE WRITTEN CONSENT OF THE ARCHITECT OR AUTHOR OF SAID DOCUMENTS TO REPRODUCE OR TO MAKE COPIES OF SAID DOCUMENTS FOR USE IN THE EXECUTION OF ANY WORK OR PROJECTS OR BUILDING, WHETHER EXECUTED WHOLLY OR IN WHOLE.	REVISION : <table border="1"> <tr> <th>NO.</th> <th>DATE</th> <th>REVISION BY</th> </tr> <tr> <td> </td> <td> </td> <td> </td> </tr> </table>	NO.	DATE	REVISION BY				PROJECT TITLE : CONSTRUCTION OF STORAGE BUILDING LOCATION : @ CITY HALL COMPOUND, BRGY. CABDAN, EAST DIST. SOROGON CITY	RECOMMENDED BY : ROBERT DOMER, C.E. / RMP CITY ENGINEER	APPROVED BY : MA. ESTER E. HAMOR CITY MAYOR	SHEET CONTENT'S : AS - SHOWN	DESIGNED : DRAWN : CHECKED : DATE : PROJECT NO. :	SHEET NO. : A-05 ARCHITECTURAL	
NO.	DATE	REVISION BY													



1 FOUNDATION PLAN
S-01 SCALE 1:100 m

PROJ. NO. : P/R NO. : VALIDITY : ISSUED ON : ISSUED AT : TKN : W/P/NO. :	REPUBLIC ACT 9206 DRAWINGS AND SPECIFICATIONS ONLY SIGNED, STAMPED OR SEALED AS INSTRUMENT OF SERVICE ARE THE PROPERTIES AND DOCUMENTS OF THE ARCHITECT OR AUTHOR. WHETHER THE OBJECT FOR WHICH THEY ARE MADE IS EXECUTED OR NOT, IT SHALL BE UNLAWFUL FOR ANY PERSON, WITHOUT THE WRITTEN CONSENT OF THE ARCHITECT OR AUTHOR OF SAID DOCUMENTS TO DUPLICATE OR TO MAKE COPIES OF SAID DOCUMENTS FOR USE IN THE REPRODUCTION AND FOR OTHER PROJECTS OR BUILDINGS, WHETHER EXECUTED "AS IS" OR IN WHOLE.	REVISION : <table border="1"> <thead> <tr> <th>NO.</th> <th>DATE</th> <th>REVISION BY</th> </tr> </thead> <tbody> <tr> <td> </td> <td> </td> <td> </td> </tr> </tbody> </table>	NO.	DATE	REVISION BY				PROJECT TITLE : CONSTRUCTION OF STORAGE BUILDING LOCATION : @ CITY MALL COMPOUND, BRGY. CABEJAN EAST DIST. SORSOGON CITY	RECOMMENDED BY : ROEL D. ORTIZ, C.E. / RMP CIVIL ENGINEER	APPROVED BY : MA. ESTER V. RAMOR CITY MAYOR	SHEET CONTENT'S : AS - SHOWN	DESIGNED : DRAWN : CHECKED : DATE : PROJECT NO. :	SHEET NO. : S-01 ARCHITECTURAL	
NO.	DATE	REVISION BY													

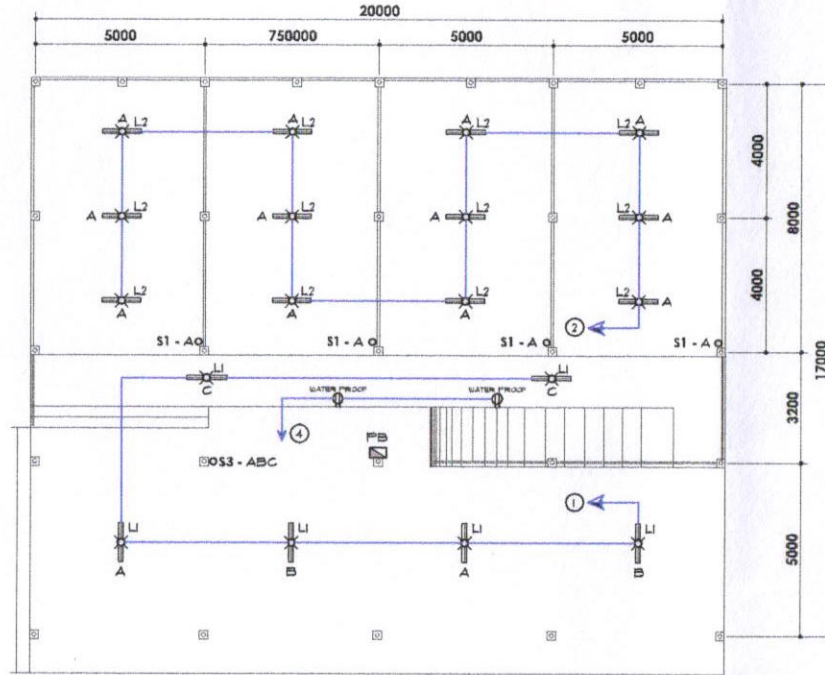


1 ROOF TRUSS FRAMING @ PARKING AREA
 9-02 SCALE 1:100 m

PRC NO. : P/REL : VALUITY : DRAWN BY : CHECKED BY : DATE : PROJECT NO. :	REPUBLIC ACT 8206 DRAWINGS AND SPECIFICATIONS SHOWN, STAMPED OR SIGNED AS INSTRUMENT OF SERVICE ARE THE PROPRIETARY AND DOCUMENTS OF THE ARCHITECT OR AUTHOR WHETHER THE OBJECT FOR WHICH THEY ARE MADE IS EXECUTED OR NOT. IT SHALL BE UNLAWFUL FOR ANY PERSON, WITHOUT THE WRITTEN CONSENT OF THE ARCHITECT OR AUTHOR OF SAID DOCUMENTS TO DUPLICATE OR TO MAKE COPIES OF SAID DOCUMENTS FOR USE IN THE REPERITION OF AND FOR OTHER PROJECTS OR BUILDING, EITHER EXECUTED PARTLY OR IN WHOLE.	REVISION : DATE : REVISION BY :	PROJECT TITLE : CONSTRUCTION OF STORAGE BUILDING LOCATION : @ CITY HALL COMPOUND, BRDY, CABE-AN, EAST DIST. SORSOGON CITY	RECOMMENDED BY : ROEL P. DOMER, C.E. / RMP CITY ENGINEER	APPROVED BY : MA. ESTER E. HAMOR CITY MAYOR	SHEET CONTENT'S : AS - SHOWN	DESIGNED : DRAWN : CHECKED : DATE : PROJECT NO. :	SHEET NO. : S-02 ARCHITECTURAL	
--------------------------------------------------------------------------------------------	-----------------------------------------------------------------------------------------------------------------------------------------------------------------------------------------------------------------------------------------------------------------------------------------------------------------------------------------------------------------------------------------------------------------------------------------------------------------------------------------------------------	----------------------------------------------	----------------------------------------------------------------------------------------------------------------------------------------	-----------------------------------------------------------------------	----------------------------------------------------------	----------------------------------------	----------------------------------------------------------------------	---------------------------------------------	--

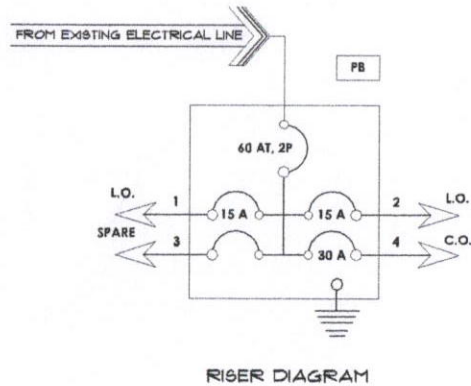
GENERAL ELECTRICAL NOTES

- ALL ELECTRICAL WORKS HEREIN SHALL BE DONE IN ACCORDANCE WITH APPLICABLE PROVISIONS OF THE LATEST EDITION OF THE PHILIPPINE ELECTRICAL CODE, REQUIREMENTS OF THE LOCAL AUTHORITIES ENFORCING THE CODE, AND REQUIREMENTS OF THE POWER SERVICE COMPANY CONCERNED.
- ALL WIRES SHALL BE COPPER TYPE T.H.H.N. IN INTERMEDIATE METALLIC CONDUIT (IMC) OR UNLESS OTHERWISE SPECIFIED.
- ALL MATERIALS TO BE USED SHALL BE BRAND NEW AND OF THE APPROVED TYPE; APPROPRIATE WITH THE LOCATION AND INTENDED USE.
- POWER SUPPLY SHALL BE 240 VOLTS, SINGLE PHASE, 60 hertz, TWO WIRE SYSTEM
- ALL WORK HEREIN SHALL BE DONE UNDER THE DIRECT SUPERVISION OF A DULY QUALIFIED AND LICENSED ELECTRICAL ENGINEER OR MASTER ELECTRICIAN
- MINIMUM SIZE OF CONDUCTORS SHALL BE 2.0 mm T.H.H.N. IN 15 TRADE SIZE
- MOUNTING HEIGHT FROM FINISH FLOOR LINE TO THE CENTER LINE OF DEVICES SHALL BE AS FALLOW:
 - CONVENIENCE OUTLET 300 mm
 - LIGHT SWITCHES 1400 mm
 - ACU OUTLET 1500 mm
 - PANEL BOARDS 1500 mm
 - ELECTRIC METER 1500 mm
- ALL VERTICAL AND HORIZONTAL CONDUIT SHALL BE CONCEALED OR EMBEDDED ON CONCRETE WALL AND FLOORS.
- ALL CONDUITS SHALL BE PROPERLY REAMED PRIOR TO INSTALLATION TO AVOID DAMAGE TO THE SKIN OF THE WIRE.
- WORKMANSHIP OF THE WORK THROUGHOUT SHALL BE EXECUTED IN THE BEST AND MOST THOROUGH MANNER KNOWN TO THE TRADE AND TO THE SATISFACTION OF THE ARCHITECT AND THE ENGINEER.



1 POWER AND LIGHTING PLAN
E-01 SCALE 1:100 m

LEGEND:	
	PANEL BOARD
	HOME RUN TO PANEL BOARD
	LED TUBE BULBS 1X18WATTS IN INDUSTRIAL TYPE CASING IP 65
	LED TUBE BULBS 2X18WATTS IN INDUSTRIAL TYPE CASING IP 65
	DUPLEX CONVENIENCE OUTLET, PARALLEL SLOT
	LIGHTING LINE
	POWER LINE



SCHEDULE OF LOADS @ PB								
CKT NO.	LOAD DESCRIPTION	QUANTITY	VOLTS	AMPERE	VA LOAD	CB RATING	WIRE SIZE	SIZE OF CONDUIT
1	MAIN		230	5.48	1,260	60 A	2 - 14.0mm ² THHN	32mm Ø UPVC
2	L.O.	6	230	1.30	300	30 A	2 - 2.0mm ² THHN	20mm Ø UPVC
3	L.O.	12	230	2.61	600	30 A	2 - 2.0mm ² THHN	20mm Ø UPVC
4	SPARE		230					
5	C.O.	2	230	1.56	360	30 A	2 - 5.5mm ² THHN	20mm Ø UPVC

TOTAL VA @ PB-1
TOTAL VA = 1,260 VA
 $I_T = \frac{1,260 \text{ VA}}{230 \text{ V}} \times 1.25$
= 5.48 A

REC. NO. : PTR. NO. : VALIDITY : ISSUED ON : ISSUED AT : TOL : WARDNO :	REPUBLIC ACT 9206 DRAWINGS AND SPECIFICATIONS DULY SIGNED, STAMPED OR SEALED AS REQUIREMENT OF SERVICE ARE THE PROPRIETIES AND DOCUMENTS OF THE ARCHITECT OR AUTHOR WHATEVER THE OBJECT FOR WHICH THEY ARE MADE IS EXECUTED OR NOT. IT SHALL BE UNLAWFUL FOR ANY PERSON, WITHOUT THE WRITTEN CONSENT OF THE ARCHITECT OR AUTHOR OF SAID DOCUMENTS TO DUPLICATE OR TO MAKE COPIES OF SAID DOCUMENTS FOR USE IN THE REPRODUCTION OF AND FOR OTHER PROJECTS OR BUILDING, WHETHER EXECUTED PARTLY OR IN WHOLE.	REVISION : DATE : REVIEWED BY :	PROJECT TITLE : CONSTRUCTION OF STORAGE BUILDING LOCATION : @ CITY HALL COMPOUND - BRGY. CAMELAN EAST DIST. SORSOGON CITY	RECOMMENDED BY : ROEL B. DOMER, C.E. / RMP CITY ENGINEER	APPROVED BY : MA. ESTER E. HAMOR CITY MAYOR	SHEET CONTENTS : AS - SHOWN	DESIGNED : DRAWN : CHECKED : DATE : PROJECT NO. :	SHEET NO. : E-01 ELECTRICAL	
-------------------------------------------------------------------------------------------	---------------------------------------------------------------------------------------------------------------------------------------------------------------------------------------------------------------------------------------------------------------------------------------------------------------------------------------------------------------------------------------------------------------------------------------------------------------------------------------------------------------	---------------------------------------	----------------------------------------------------------------------------------------------------------------------------------------	-----------------------------------------------------------------------	----------------------------------------------------------	--------------------------------	---------------------------------------------------------------	------------------------------------------	--