
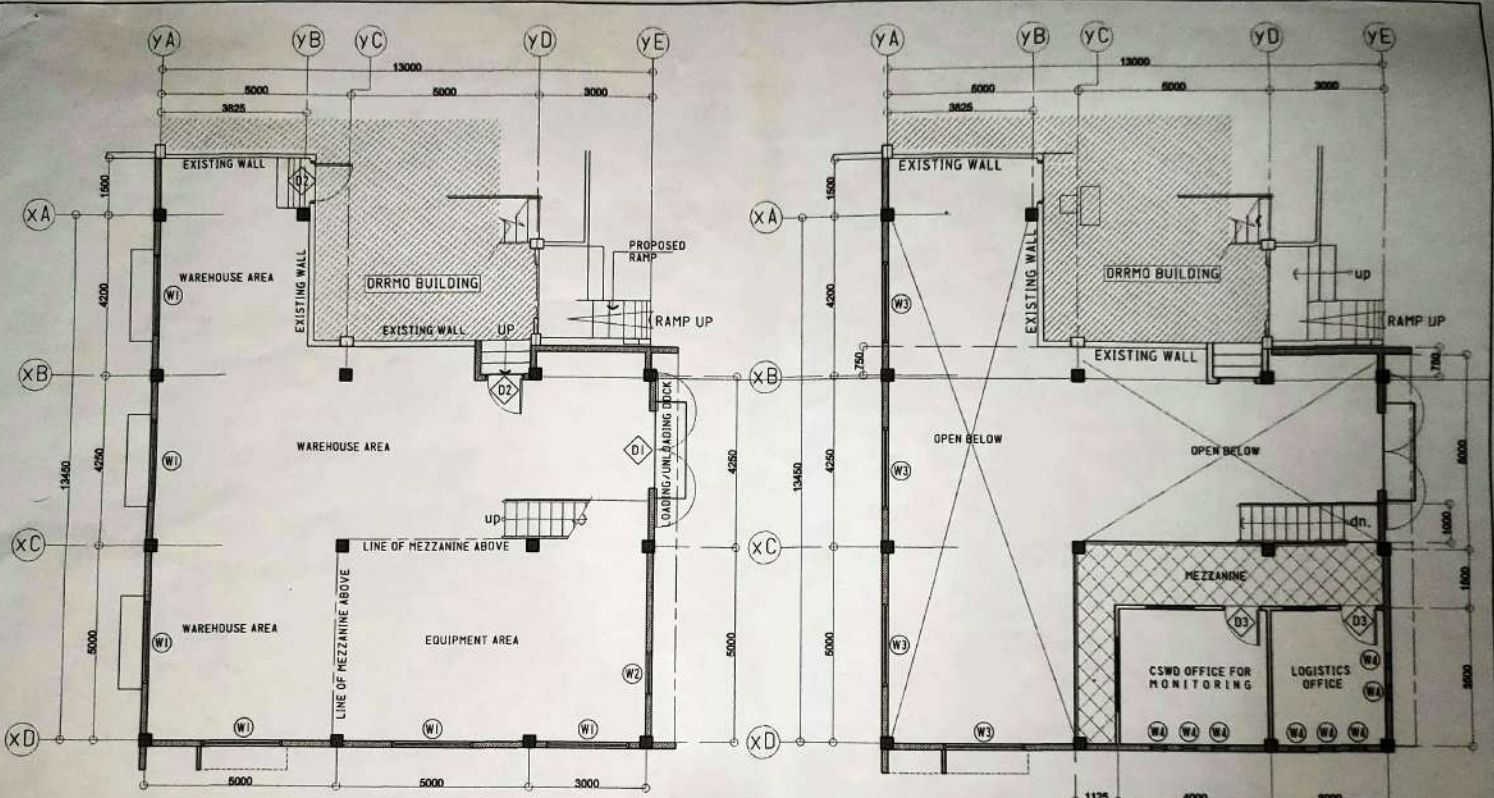


SITE DEVELOPMENT PLAN
SCALE: 1/16\"/>

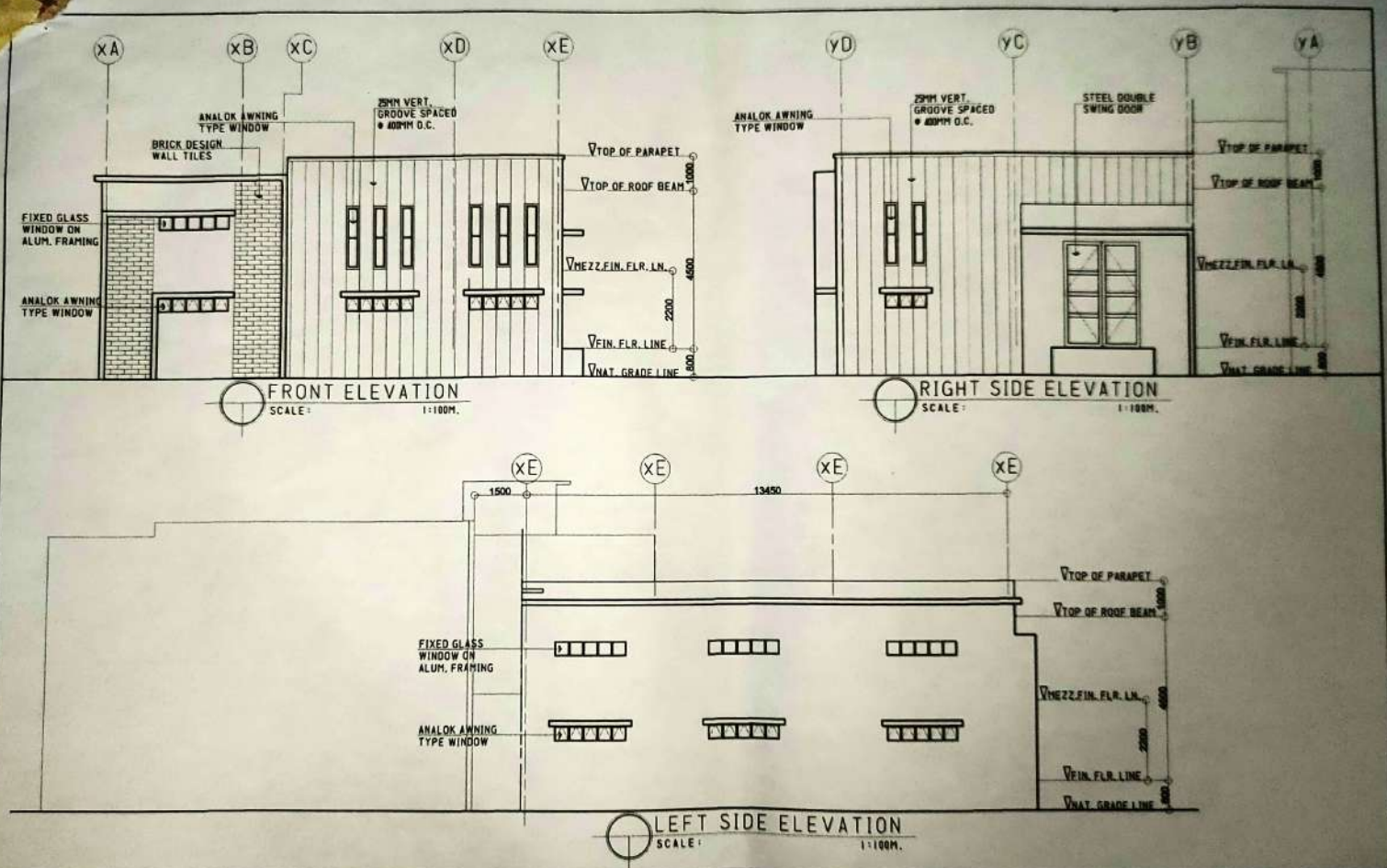
PREPARED FROM:	PROJECT TITLE:	CADD BY:	RECOMMENDED BY:	APPROVED BY:	SHEET NO.
 CITY ENGINEER'S OFFICE	CONSTRUCTION OF CDRMO WAREHOUSE LOCATION: CITY HALL COMPOUND, BRGY. CABID-AN, EAST DIST. SORSOGON CITY.	ROWANFARBELLA DRAFTSMAN III	 ROEL E. HAMOR, RMP CIVIL ENGINEER	 HON. MA. ESTER E. HAMOR CITY MAYOR	



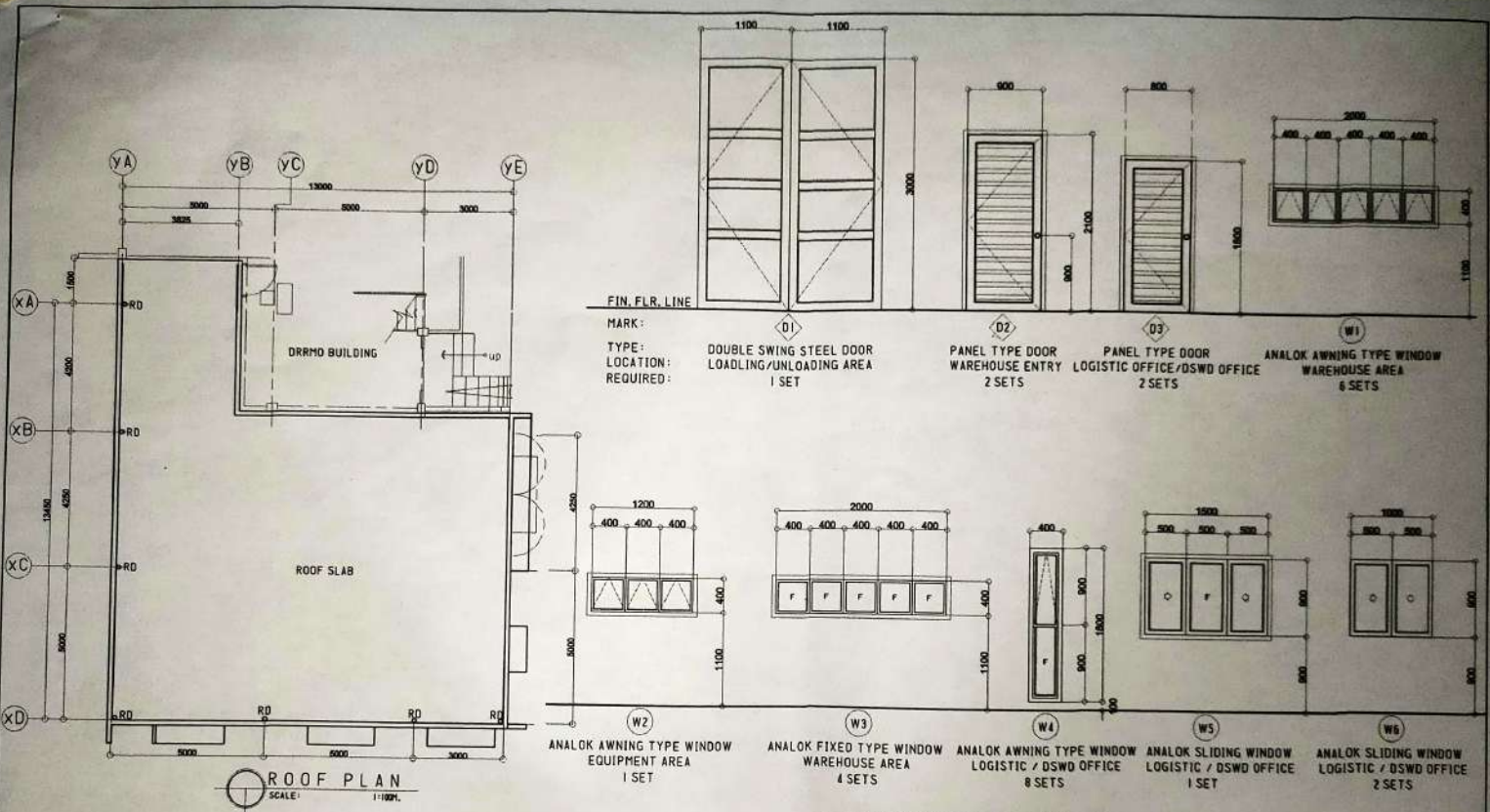
GROUND FLOOR PLAN
SCALE: 1:100M.

MEZZANINE FLOOR PLAN
SCALE: 1:100M.

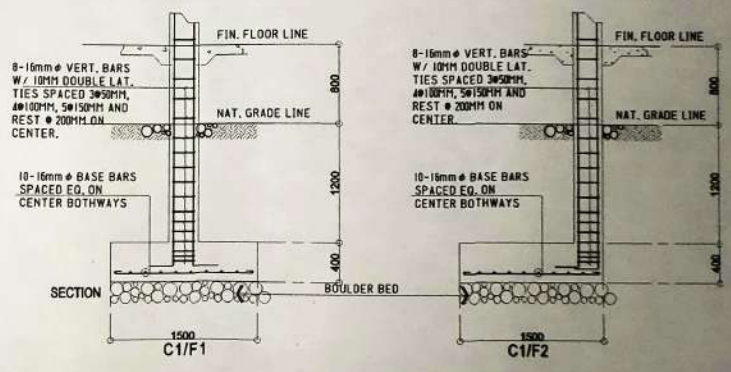
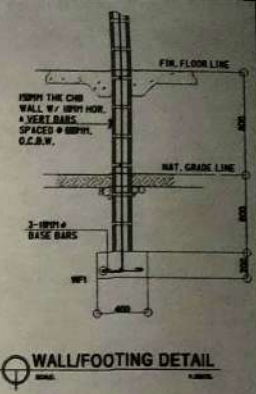
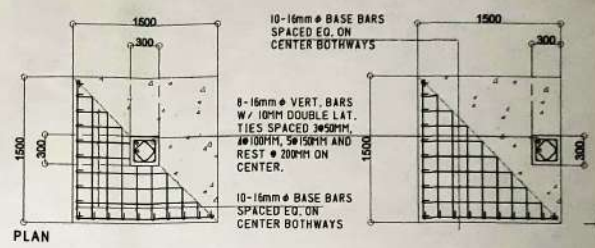
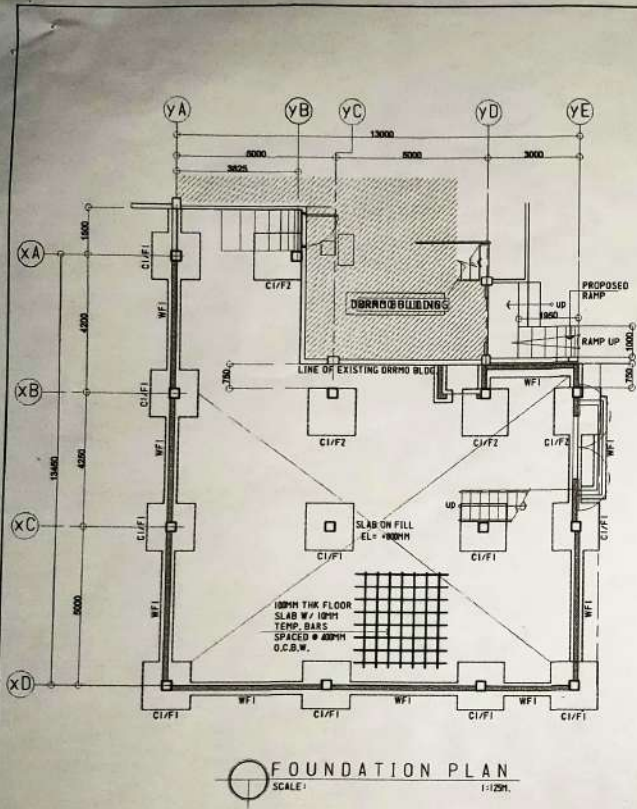
PREPARED FROM:	PROJECT TITLE:	CADD BY:	RECOMMENDED BY:	APPROVED BY:	SHEET NO.
 DIVISION OF ENGINEERING CITY ENGINEER'S OFFICE	CONSTRUCTION OF CORRMO WAREHOUSE LOCATION: CITY HALL COMPOUND, BRGY. CABID-AN, EAST DIST. SORSOGON CITY.	ROWAN MARBELLA DRAFTSMAN III	 ROSE ANNE P. E./RMP CITY ENGINEER	 HON. M. ESTER E. HANOR CITY MAYOR	<div style="border: 1px solid black; border-radius: 50%; width: 40px; height: 40px; display: flex; align-items: center; justify-content: center;"> 2 </div>



PREPARED FROM:	PROJECT TITLE:	CADD BY:	RECOMMENDED BY:	APPROVED BY:	SHEET NO.
 SORSOGON CITY CITY ENGINEER'S OFFICE	CONSTRUCTION OF CDRMO WAREHOUSE LOCATION: CITY HALL COMPOUND, BRGY. CABID-AN, EAST DIST. SORSOGON CITY.	ROWAN MARBELLA DRAFTSMAN III	 ROEL SORIANO C.E./RMP CITY ENGINEER	 HON. MA. ESTER E. HAMOR CITY MAYOR	

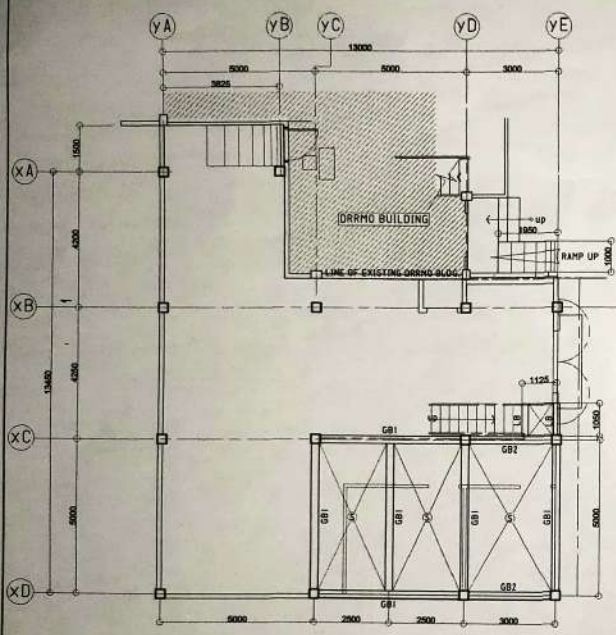


PREPARED FROM:	PROJECT TITLE:	CADD BY:	RECOMMENDED BY:	APPROVED BY:	SHEET NO.:
	CONSTRUCTION OF CDRMO WAREHOUSE	ROWAN MARBELLA DRAFTSMAN III	ROEL M. ... C.E./RMP CITY ENGINEER	HON. MA. ESTER E. HAMOR CITY MAYOR	4
LOCATION: CITY HALL COMPOUND, BRGY. CABID-AN, EAST DIST. SORSOGON CITY.					

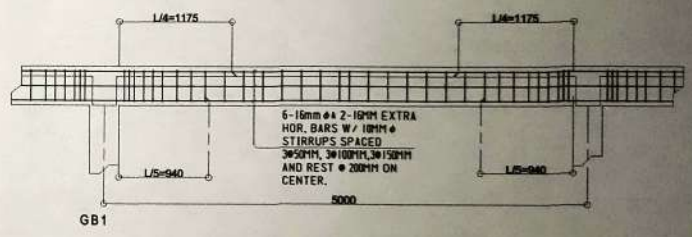
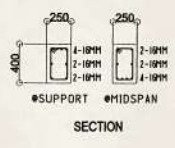
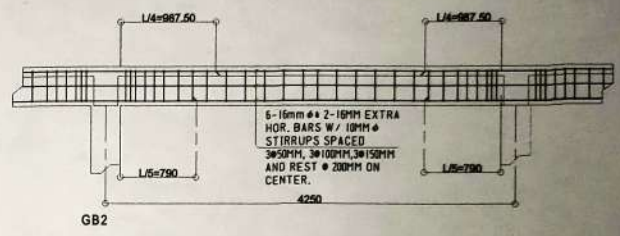
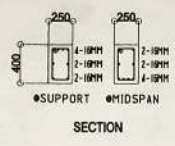


COLUMN/FOOTING DETAIL
SCALE: 1:40M

PREPARED FROM:	PROJECT TITLE:	CADD BY:	RECOMMENDED BY:	APPROVED BY:	SHEET NO.
	CONSTRUCTION OF CDRRMO WAREHOUSE	ROWANFARBELLA DRAFTSMAN III	ROEL D. [Signature] CITY ENGINEER	HON. MA. ESTER E. HAMOR CITY MAYOR	5
LOCATION: CITY HALL COMPOUND, BRGY. CABID-AN, EAST DIST. SORSOGON CITY.					

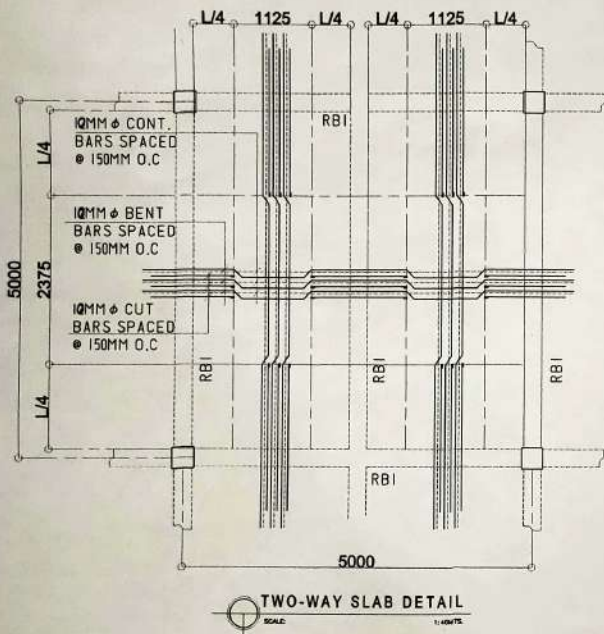


MEZZANINE FLOOR FRAMING PLAN
SCALE: 1:125M.

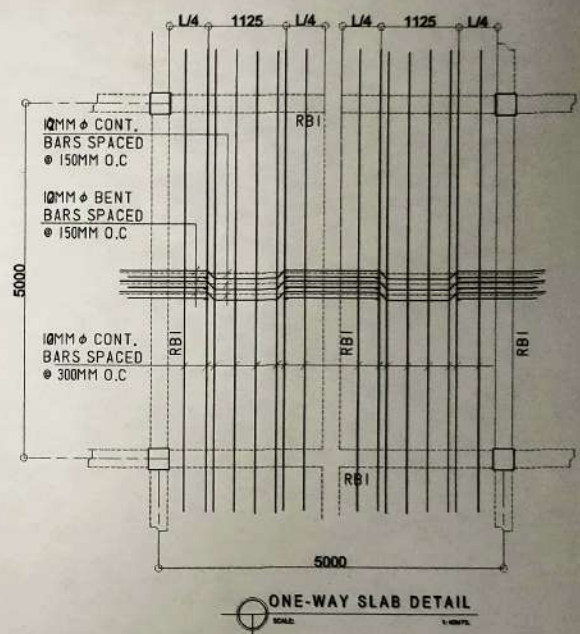


GIRDER BEAM DETAIL
SCALE: 1:40MTS.

PREPARED FROM:	PROJECT TITLE:	CADD BY:	RECOMMENDED BY:	APPROVED BY:	SHEET NO.
	<p>CONSTRUCTION OF CDRRMO WAREHOUSE</p> <p>LOCATION: CITY HALL COMPOUND, BRGY. CABID-AN, EAST DIST. SORSOGON CITY.</p>	<p>ROWAN MARBELLA DRAFTSMAN II</p>	<p>ROEL D. [Signature] / RMP CITY ENGINEER</p>	<p>[Signature] MON. MA. ESTER E. NAMOR CITY MAYOR</p>	<p>6</p>

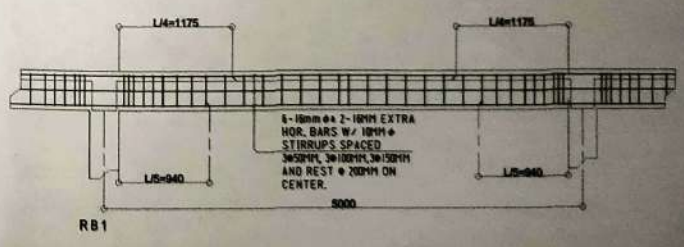
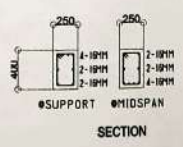
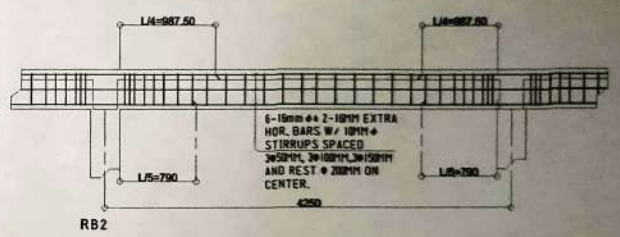
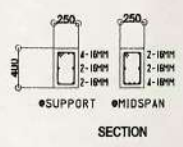
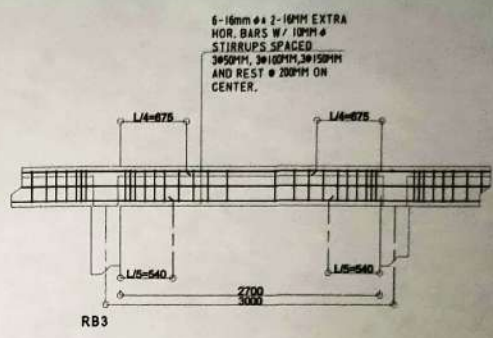
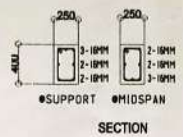
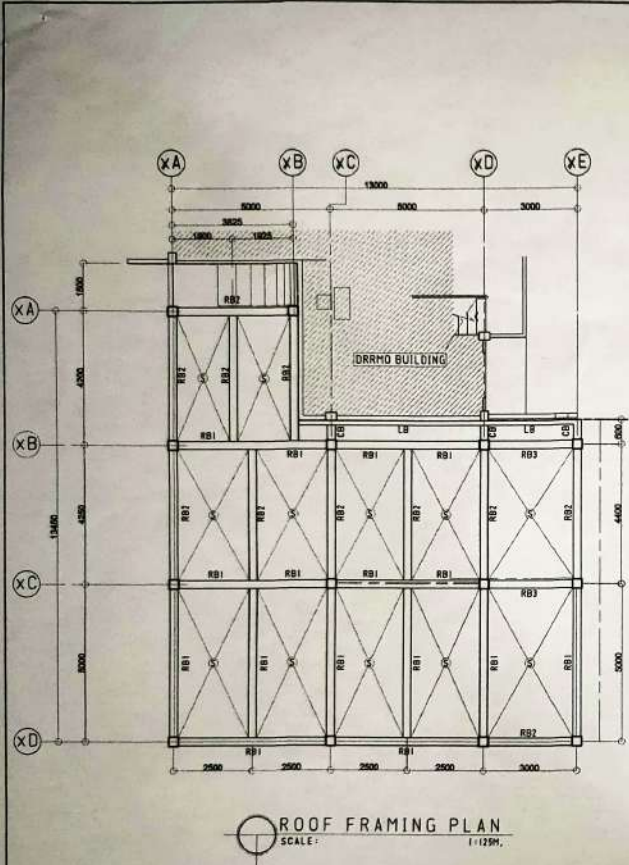


TWO-WAY SLAB DETAIL
SCALE: 1:40



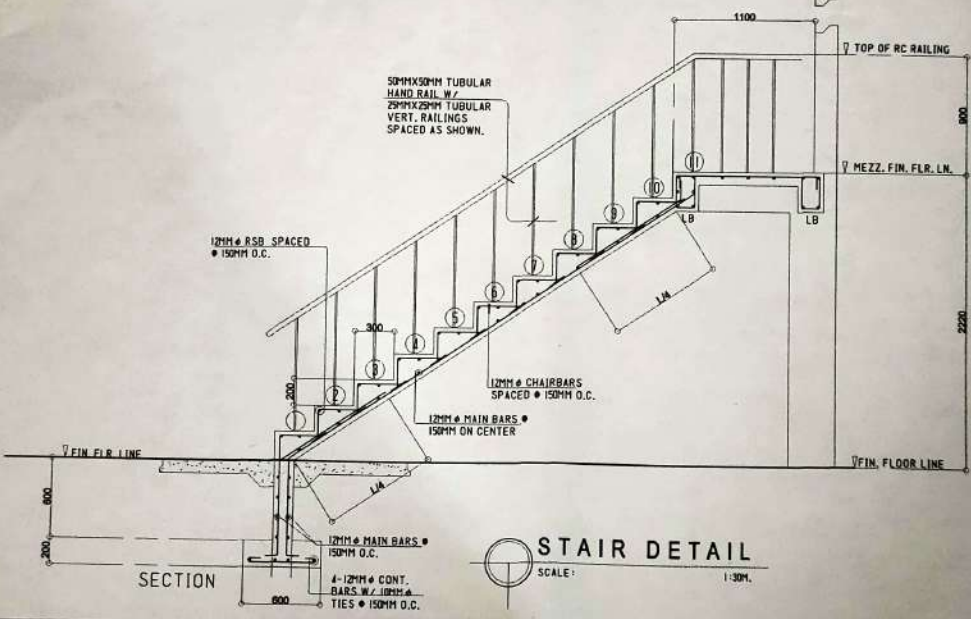
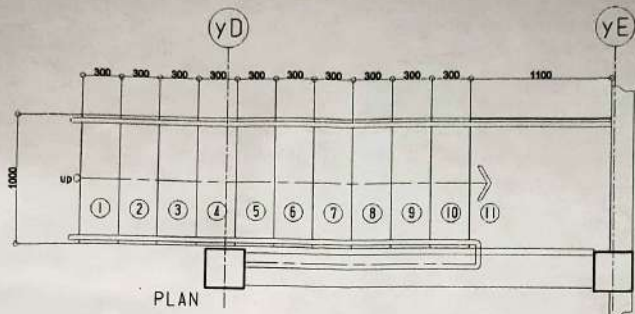
ONE-WAY SLAB DETAIL
SCALE: 1:40

PREPARED FROM:  CAGAYAN CITY CITY ENGINEER'S OFFICE	PROJECT TITLE: CONSTRUCTION OF CDRMO WAREHOUSE LOCATION: CITY HALL COMPOUND, BRGY. CABID-AN, EAST DIST. SORSOGON CITY.	CADD BY: ROWAN MARBELLA DRAFTSMAN III	RECOMMENDED BY:  ROEL D. RAMOS, RMP CITY ENGINEER	APPROVED BY:  HON. MA. ESTER E. HAMOR CITY MAYOR	SHEET NO. <div style="border: 1px solid black; border-radius: 50%; width: 40px; height: 40px; display: flex; align-items: center; justify-content: center; margin: 0 auto;">7</div>
--	---	---	---	--	--



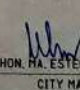


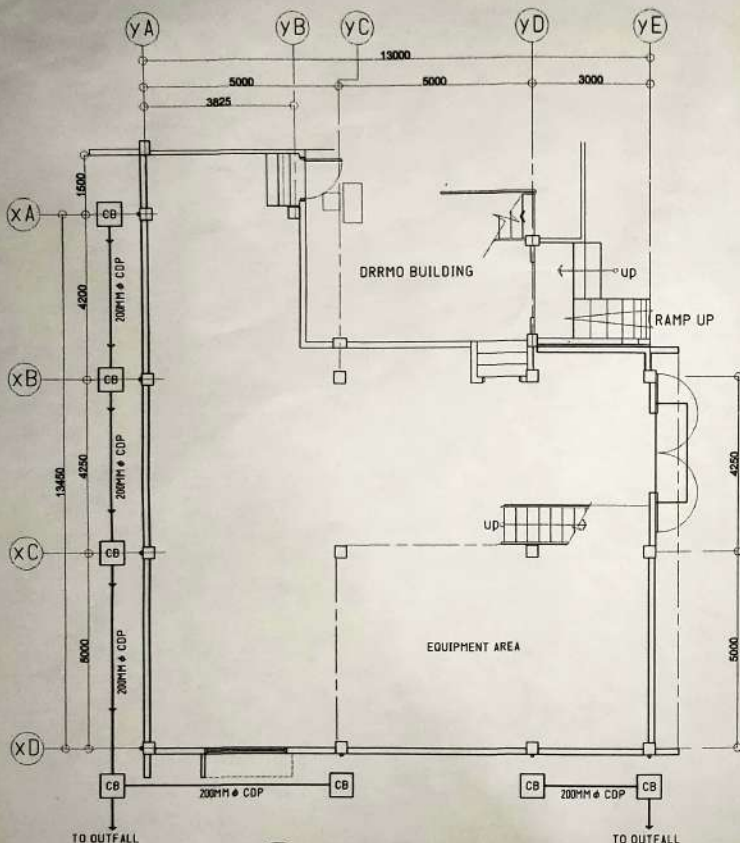
ROOF BEAM DETAIL
SCALE: 1/40MTS

PREPARED FROM:	PROJECT TITLE:	CADD BY:	RECOMMENDED BY:	APPROVED BY:	SHEET NO.
	CONSTRUCTION OF CORRMO WAREHOUSE	ROWAN MARBELLA DRAFTSMAN (I)	ROEL D. RODRIGUEZ, RMP CIVIL ENGINEER	HON. RAUL ESTER E. HAMOR CITY MAYOR	8
LOCATION: CITY HALL COMPOUND, BRGY. CABID-AN, EAST DIST. SORSOGON CITY.					

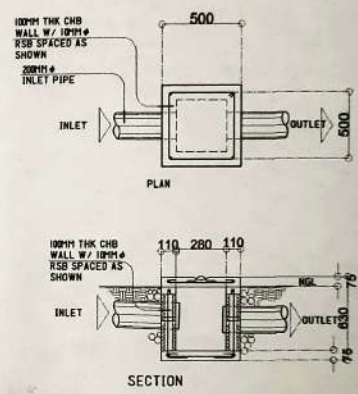


STAIR DETAIL
SCALE: 1:30M.

PREPARED FROM:  SORSOGON CITY CITY ENGINEER'S OFFICE	PROJECT TITLE: CONSTRUCTION OF CDRMO WAREHOUSE	CADD BY: ROWANFARBELLA DRAFTSMAN III	RECOMMENDED BY:  ROEL D. ... C.E./RMP CITY ENGINEER	APPROVED BY:  HON. MA. ESTER E. HAMOR CITY MAYOR	SHEET NO. <div style="border: 1px solid black; border-radius: 50%; width: 40px; height: 40px; display: flex; align-items: center; justify-content: center; margin: 0 auto;"> 9 </div>
LOCATION: CITY HALL COMPOUND, BRGY. CABID-AM, EAST DIST. SORSOGON CITY.					



PLUMBING LAYOUT
SCALE: 1:100M.



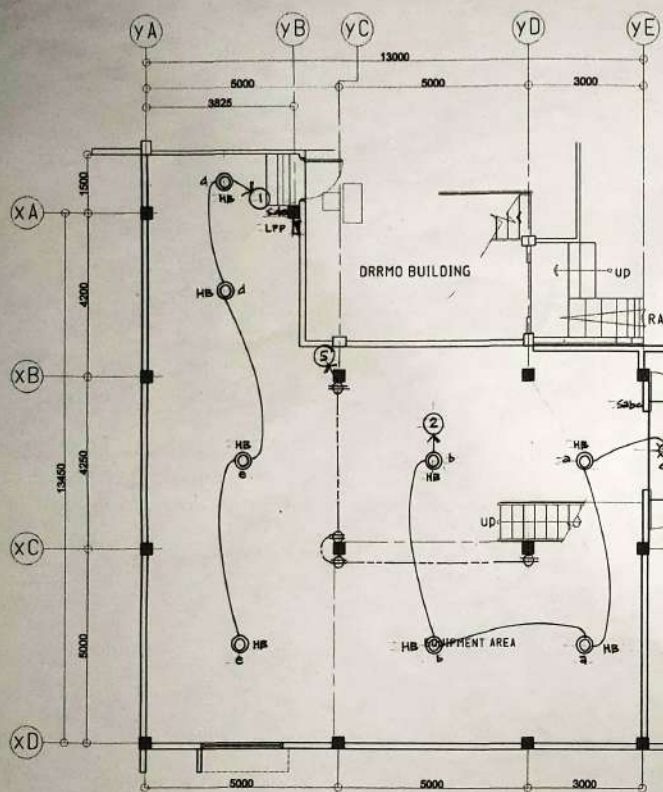
CATCH BASIN DETAIL
SCALE: 1:200M.

KEY TO SYMBOLS	
WC	WATER CLOSET
LAV	LAVATORY
FB	FLOOR DRAIN
CD	CLEAN OUT
VSTR	VENT STACK THRU ROOF
F	FAUCET
FN	FURN HOLE
DS	DOWN SPOUT
GV	GATE VALVE
CV	CHECK VALVE
CWL	COLD WATER LINE
WPL	WASTE PIPE LINE
GIP	GALVANIZED IRON PIPE
PVC	POLYVINYL CHLORIDE
KS	KITCHEN SINK
CB	CATCH BASIN
RD	ROOF DRAIN
ST	SEPTIC TANK
WI	WATER METER

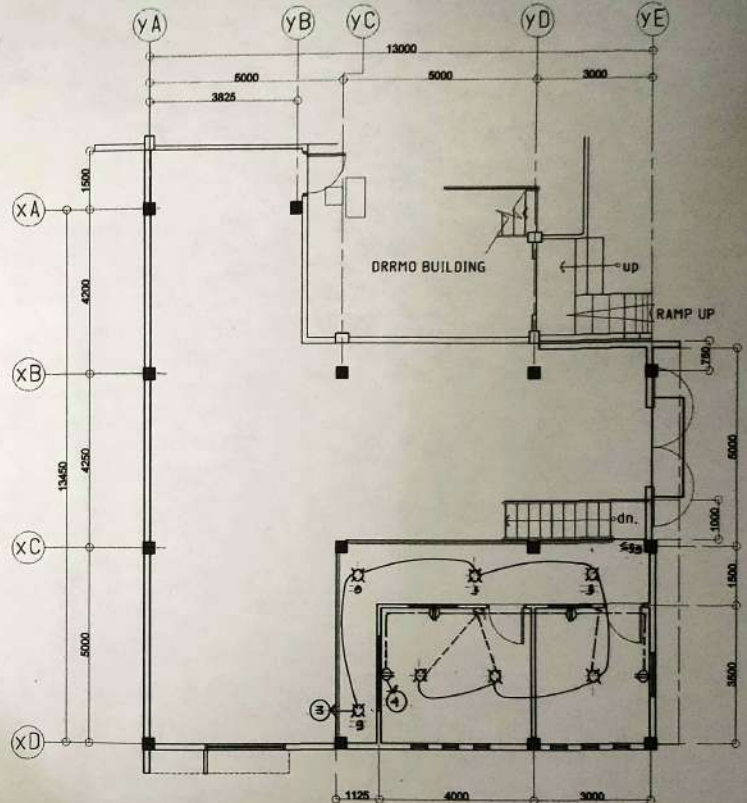
PLUMBING / SANITARY NOTES

- ALL SANITARY WORKS INCLUDED HEREIN SHALL BE EXECUTED ACCORDING TO THE PROVISIONS OF THE PHILIPPINE NATIONAL SANITATION CODE, THE NATIONAL BUILDING CODE AND THE RULES AND REGULATIONS OF SORSOGON CITY.
- COORDINATE THE DRAWINGS WITH OTHER INDICATED, ANY RELOCATION REQUIRED FOR PROPER EXECUTION OF OTHER TRADES SHALL BE WITH PRIOR APPROVAL OF THE DESIGNER.
- ALL PIPES SHALL BE INSTALLED AS INDICATED, ANY RELOCATED REQUIRED FOR PROPER EXECUTION OF OTHER TRADES SHALL BE WITH PRIOR APPROVAL OF THE DESIGNER.
- ALL SLOPES FOR HORIZONTAL DRAINAGE AND SEWER LINES SHALL MAINTAIN 1% MINIMUM SLOPE UNLESS OTHERWISE SPECIFIED.
- ALL MATERIALS TO BE USED SHALL BE BRAND NEW AND OF APPROVED TYPE APPROPRIATE FOR BOTH LOCATION AND INTENDED USE.
- ALL PLUMBING INSTALLATION SHALL BE UNDER THE DIRECT SUPERVISION OF A DAILY LICENSED MASTER PLUMBER / SANITARY ENGINEER.
- PROVIDE ISOLATION VALVE FOR EVERY TOILET ROOM DRAIN LINE.
- SEPTIC TANK CONSTRUCTION MUST FOLLOW SECTION 203 OF THE NATIONAL BUILDING CODE.



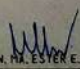
PREPARED FROM: 	PROJECT TITLE: CONSTRUCTION OF CDRMO WAREHOUSE	CADD BY: ROWAN MARBELLA DRAFTSMAN II	RECOMMENDED BY: ROEL [Signature] CITY ENGINEER	APPROVED BY: HON. MA. ESTER E. HAYOR CITY MAYOR	SHEET NO. 10
LOCATION: CITY HALL COMPOUND, BRGY. CABID-AN, EAST DIST. SORSOGON CITY.					



GROUND FLOOR ELECTRICAL LAYOUT
SCALE: 1:100M.



MEZZANINE FLOOR ELECTRICAL LAYOUT
SCALE: 1:100M.

PREPARED FROM:  CITY ENGINEER'S OFFICE	PROJECT TITLE: CONSTRUCTION OF CDRRMO WAREHOUSE LOCATION: CITY HALL COMPOUND, BRGY. CABID-AN, EAST DIST. SORSOGON CITY.	CADD BY: TOTZDAGRALAN HHRD IV	RECOMMENDED BY:  ROEL D. DOMESTICA, RMP CITY ENGINEER	APPROVED BY:  HON. M. ESTER E. NAMOR CITY MAYOR	SHEET NO. <div style="border: 1px solid black; border-radius: 50%; width: 40px; height: 40px; display: flex; align-items: center; justify-content: center; margin: 0 auto;"> 11 </div>
--	--	-------------------------------------	---	---	---

50 W. LED HIGH BAY LIGHT

LOAD SCHEDULE

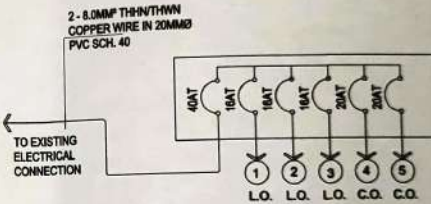
CKT. NO.	LOAD DESCRIPTION	NO. OF LOADS	V.A.	VOLTS	AMPERE	CB RATING	SIZE OF WIRES	SIZE OF CONDUIT
1	LIGHTING OUTLET 50W	4	200	230	0.86	16AT	2-2.0 MM ² THHN/THWN	15mm Ø PVC
2	LIGHTING OUTLET 50W	5	250	230	1.06	16AT	2-2.0 MM ² THHN/THWN	15mm Ø PVC
3	LIGHTING OUTLET 25W	7	175	230	0.76	16AT	2-2.0 MM ² THHN/THWN	15mm Ø PVC
4	CONVENIENCE OUTLET	4	720	230	3.13	20AT	2-3.5 MM ² THHN/THWN	15mm Ø PVC
5	CONVENIENCE OUTLET	4	720	230	3.13	20AT	2-3.5 MM ² THHN/THWN	15mm Ø PVC
TOTAL		24	2065	230	8.96	40AT	2-8.0 MM² THHN/THWN	25mm Ø PVC

COMPUTATION OF LOAD:

$$I_T = \frac{2065}{230} \text{ 85\% D.F.}$$

$$I_T = 7.82 \text{ AMPERES}$$

USE : 40 AT, 2P CIRCUIT BREAKER FOR MAIN DISCONNECT SWITCH & 2-8.0mm² THHN / THWN COPPER WIRE FOR FEEDER LINE IN 25mm Ø PVC SCHEDULE 40



RISER DIAGRAM

KEY TO SYMBOLS

	SERVICE ENTRANCE
	ADEQUATE METER
	PANEL BOARD
	CIRCUIT BREAKER
	CIRCUIT BREAKER
	LIGHTING OUTLET
	WEATHERPROOF CONVENIENCE OUTLET
	SINGLE POLE SWITCH
	DUPLEX SWITCH
	THREE WAY SWITCH
	SWITCH LEG
	LIGHTING CIRCUIT
	POWER CIRCUIT
	TRANSFER SWITCH
	AMPERE TRIP
	PANEL BOARD

ELECTRICAL NOTES:

- ALL ELECTRICAL WORKS HEREIN SHALL COMPLY WITH THE PROVISIONS OF THE LATEST EDITION OF THE PHILIPPINE ELECTRICAL CODE, THE RULES & REGULATIONS OF SORSOGON CITY & SORSOGON ELECTRIC COOPERATIVE INC.
- TYPE OF SERVICE SHALL BE SINGLE, 1 PHASE, 2 WIRE SYSTEM, 80% AND THERE SHALL BE ONLY ONE SERVICE DROP TO THE BUILDING.
- METHOD OF WIRING FOR SERVICE ENTRANCE CONDUITS SHALL BE IN RIGID METAL CONDUIT & BRANCH CONDUIT IN POLYURETHANE CALORISE FOR BOTH EXPOSED AND CONCEALED WITH PROPER FITTINGS AND SUPPORT.
- ALL MATERIALS AND EQUIPMENTS SHALL BE BRAND NEW AND OF APPROVED TYPE FOR BOTH LOCATION AND PURPOSE INTENDED.
- ALL LIGHTINGS AND CONVENIENCE OUTLET, CIRCUIT BREAKERS SHALL BE WIRED WITH NOT LESS THAN 20M² RESPECTIVELY UNLESS OTHERWISE INDICATED ON THE PLAN.
- WHENEVER REQUIRED AND NECESSARY, PULL BOXES AND JUNCTION BOXES OF PROPER SIZE SHALL BE INSTALLED AT CONVENIENT AND CONSPICUOUS LOCATIONS ALTHOUGH SUCH BOXES ARE NOT SHOWN ON THE PLANS NOR MENTIONED IN THE SPECIFICATIONS.
- MOUNTING HEIGHTS SHALL BE AS FOLLOWS:
 LIGHT SWITCH - 1.8M
 FROM FIN. FLOOR LINE
 DUPLEX C.O. - 0.9M
 FROM FIN. FLOOR LINE / COUNTER
 PANEL BOARD - 1.8M
 FROM FIN. FLOOR LINE.
- ALL OUTDOOR INSTALLATIONS SHALL BE WEATHERPROOF TYPE.
- ALL ELECTRICAL WORKS SHALL BE DONE UNDER THE DIRECT AND IMMEDIATE SUPERVISION OF A DULY LICENSED REGISTERED ELECTRICAL ENGINEER OR A REGISTERED MASTER ELECTRICIAN.

PREPARED FROM:	PROJECT TITLE:	CADD BY:	RECOMMENDED BY:	APPROVED BY:	SHEET NO.
	CONSTRUCTION OF CDRMO WAREHOUSE	ROWANF MARBELLA DRAFTSMAN III	ROEL D. GONZALES, RMP CITY ENGINEER	HON. MA. ESTER E. HANOR CITY MAYOR	12
LOCATION: CITY HALL COMPOUND, BRGY. CABIG-AN, EAST DIST. SORSOGON CITY.					