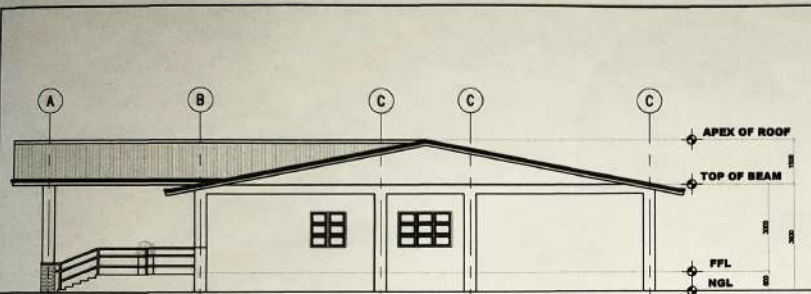
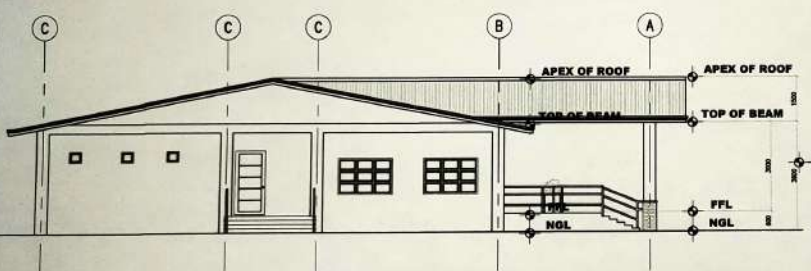
 SORSOGON CITY CITY ENGINEER'S OFFICE	<b>CONSTRUCTION OF SORSOGON CITY          SUPER HEALTH CENTER</b>	DRAWN:	RECOMMENDED BY:	APPROVED BY:	SHEET NO.
	LOCATION: PANGPANG, WEST DISTRICT, SORSOGON CITY	<i>mario lara, malabueno, uap</i> ARCHITECT I	ROEL D. DOMER C.E. CITY ENGINEER	HON. MA. ESTER E. HAMOR CITY MAYOR	<b>1</b> <b>A.3</b>



1 RIGHT ELEVATION  
SCALE 1:50M  
A-2


TYPE	AMOUNT	TYPE	AMOUNT	TYPE	AMOUNT	TYPE	AMOUNT
(R) LOCATION		(R) LOCATION		(R) LOCATION		(R) LOCATION	
UNIT: 4		UNIT: 3		UNIT: 3		UNIT: 4	

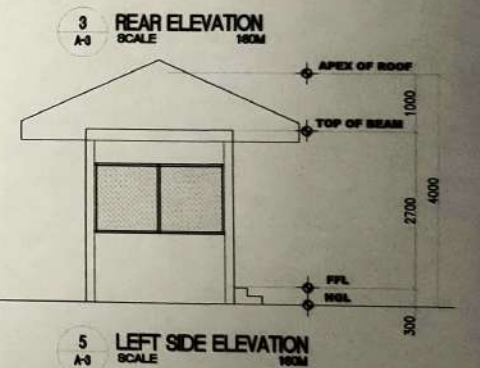
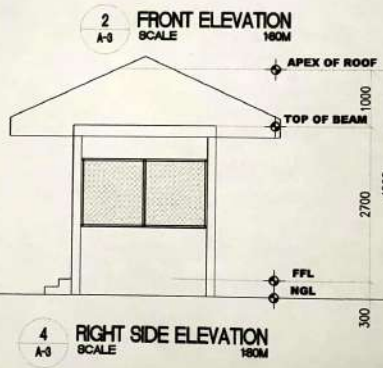
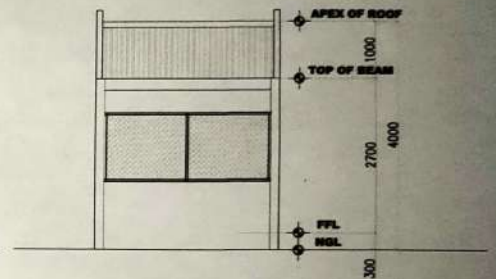
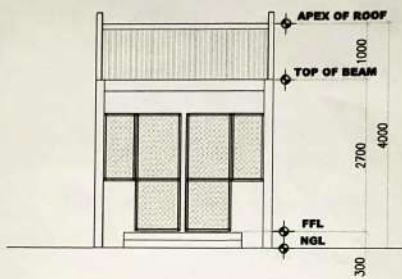
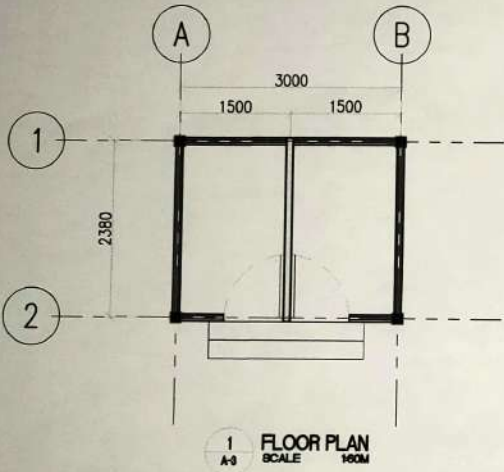


2 LEFT ELEVATION  
SCALE 1:50M  
A-2

TYPE	AMOUNT	TYPE	AMOUNT	TYPE	AMOUNT	TYPE	AMOUNT	TYPE	AMOUNT
(R) LOCATION		(R) LOCATION		(R) LOCATION		(R) LOCATION		(R) LOCATION	
UNIT: 1		UNIT: 1		UNIT: 1		UNIT: 1		UNIT: 1	

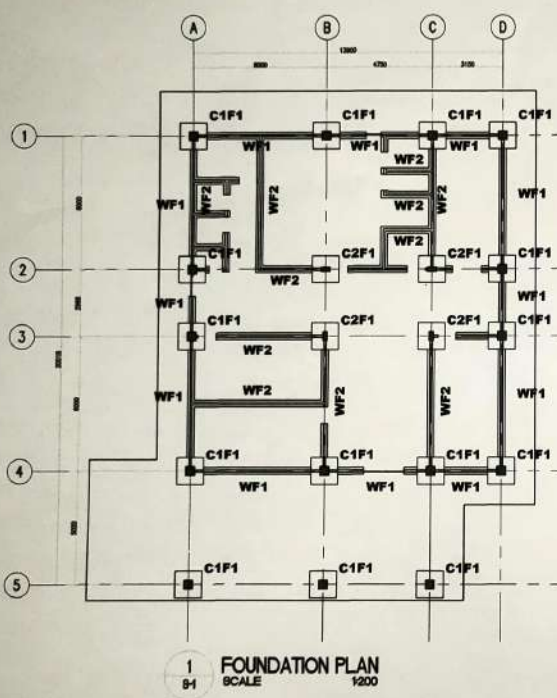
3 DOORS AND WINDOW SCHEDULE  
SCALE 1:100M  
A-2

	<p>CONSTRUCTION OF SORSOGON CITY SUPER HEALTH CENTER</p> <p>LOCATION: PANGPANG, WEST DISTRICT, SORSOGON CITY</p>	<p>DRAWN:</p> <p><i>maria lara malabena, arq</i> ARCHITECT I</p>	<p>RECOMMENDED BY:</p> <p>ROEL D. DIMER C.E. CIVIL ENGINEER</p>	<p>APPROVED BY:</p> <p>HON. MA. ESTER E. HAMOR CITY MAYOR</p>	<p>SHEET NO.</p> <p>2 A.3</p>

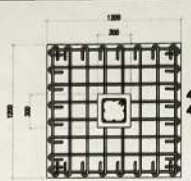


<p>CONSTRUCTION OF SORSOGON CITY SUPER HEALTH CENTER</p> <p>LOCATION: PANGPANG, WEST DISTRICT, SORSOGON CITY</p>	<p>DRAWN:</p> <p><i>maria lara melabuenas, ncp</i> ARCHITECT I</p>	<p>RECOMMENDED BY:</p> <p><i>RODOLFO SOMER C.E.</i> CITY ENGINEER</p>	<p>APPROVED BY:</p> <p>HON. MA. ESTER E. HAMOR CITY MAYOR</p>	<p>SHEET NO.</p> <p>3 A-3</p>
	<p>DATE: _____</p>			

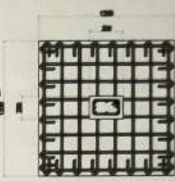




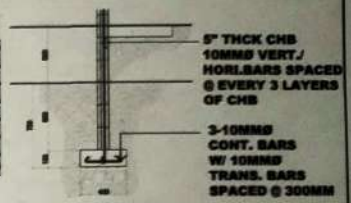
1 FOUNDATION PLAN  
SCALE 1:200



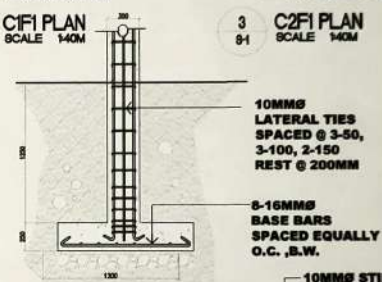
2 C1F1 PLAN  
SCALE 1:40M



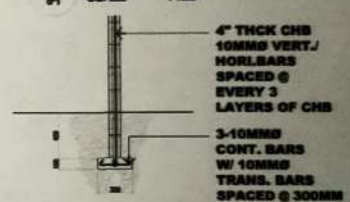
3 C2F1 PLAN  
SCALE 1:40M



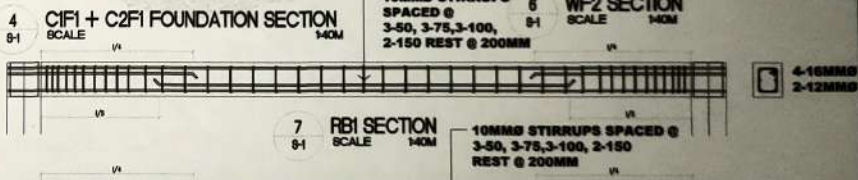
5 WF1 SECTION  
SCALE 1:40M



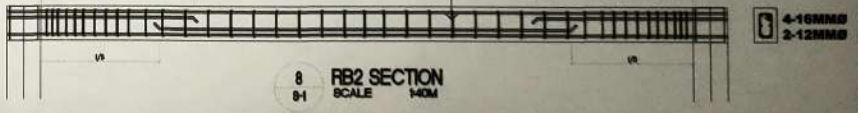
4 C1F1 + C2F1 FOUNDATION SECTION  
SCALE 1:40M



6 WF2 SECTION  
SCALE 1:40M



7 RBI SECTION  
SCALE 1:40M



8 RB2 SECTION  
SCALE 1:40M



CONSTRUCTION OF SORSOGON CITY SUPER HEALTH CENTER

LOCATION: PANGPANG, WEST DISTRICT, SORSOGON CITY

DRAWN:

*maria lora malabuan, uap*  
ARCHITECT I

RECOMMENDED BY:

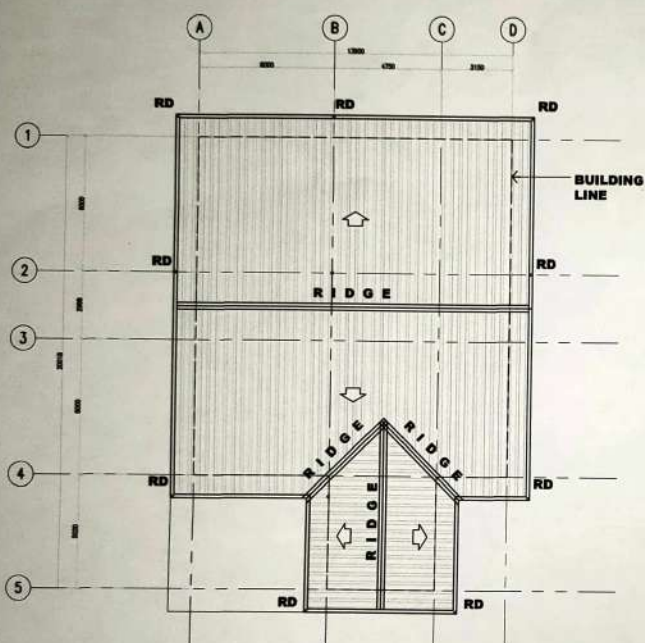
ROEL D. DOMER C.E.  
CITY ENGINEER

APPROVED BY:

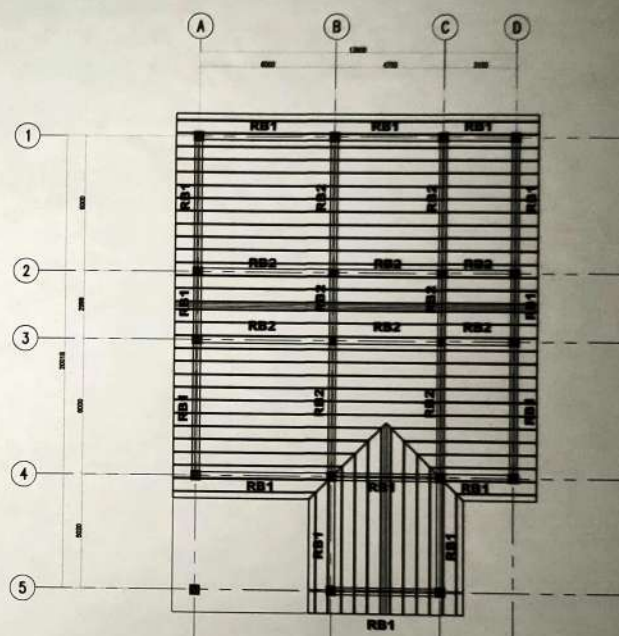
HON. MA. ESTER E. HAMOR  
CITY MAYOR

SHEET NO.

1  
S.5



1 ROOF PLAN  
SCALE 1:200M



2 ROOF FRAMING PLAN  
SCALE 1:200M

DRAWN:

RECOMMENDED BY:

APPROVED BY:

SHEET NO.



SORSOGON CITY  
CITY ENGINEER'S OFFICE

CONSTRUCTION OF SORSOGON CITY  
SUPER HEALTH CENTER

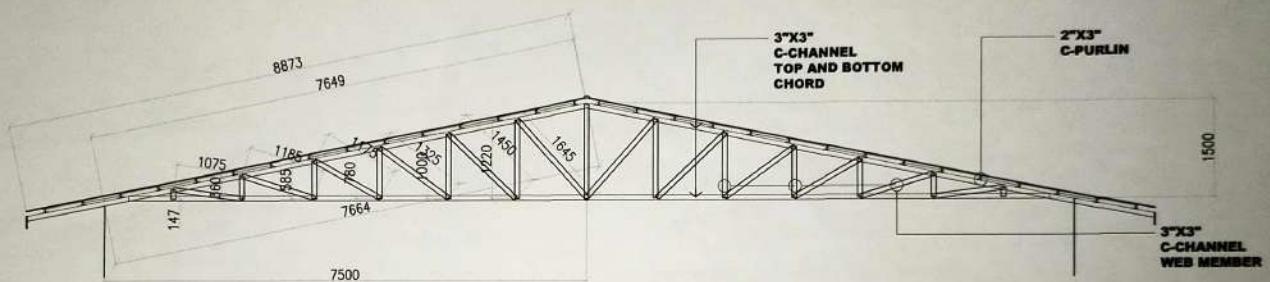
LOCATION: PANGPANG, WEST DISTRICT, SORSOGON CITY

*maria lora m. malabana, nap*  
ARCHITECT I

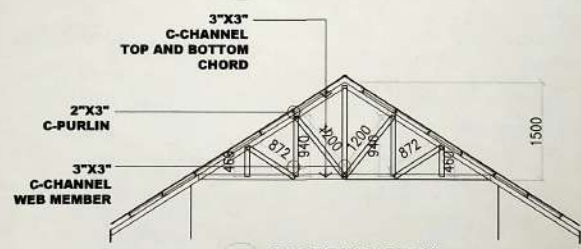
ROEL D. BOMER C.E.  
CITY ENGINEER

HON. MA. ESTER E. HAMOR  
CITY MAYOR


2  
S.5



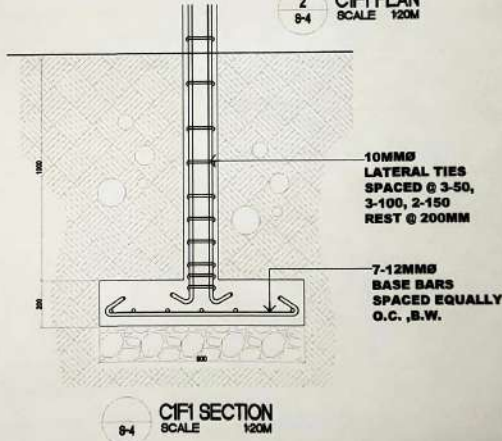
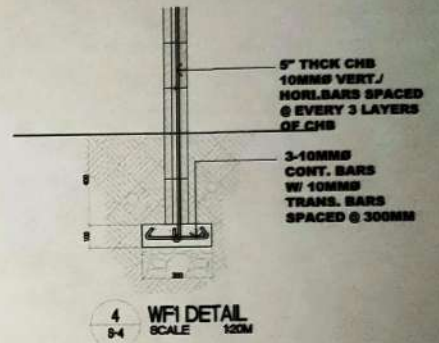
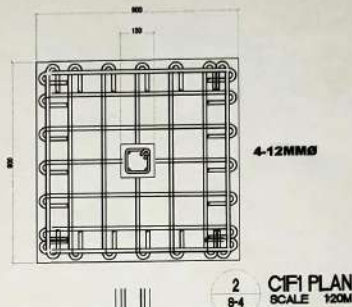
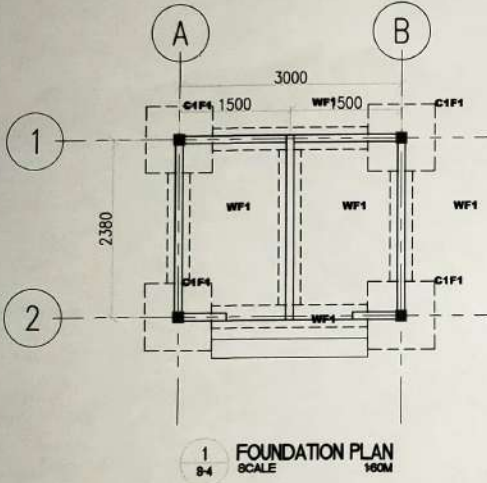
1 ROOF TRUSS DETAIL  
SCALE 1/70M




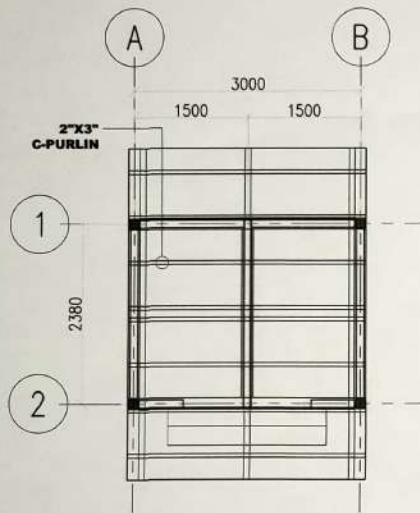
2 ROOF TRUSS DETAIL  
SCALE 1/70M

 <p><b>SORSOGON CITY CITY ENGINEER'S OFFICE</b></p>	<p><b>CONSTRUCTION OF SORSOGON CITY SUPER HEALTH CENTER</b></p> <p>LOCATION: PANGPANG, WEST DISTRICT, SORSOGON CITY</p>	<p>DRAWN:</p> <p><i>maria lara / malabuena, aca</i> ARCHITECT I</p>	<p>RECOMMENDED BY:</p> <p><i>ROEL D. DOMER C.E.</i> CITY ENGINEER</p>	<p>APPROVED BY:</p> <p>HON. MA. ESTER E. HAMOR CITY MAYOR</p>	<p>SHEET NO.</p> <p><b>3</b> <b>S.5</b></p>
---	---	---	---	---	---

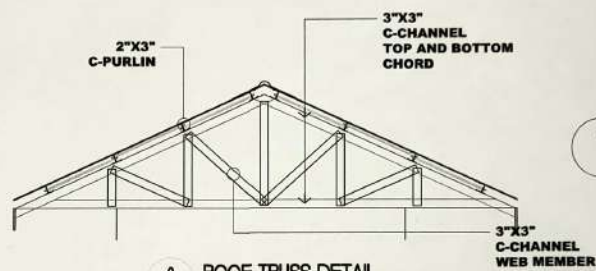




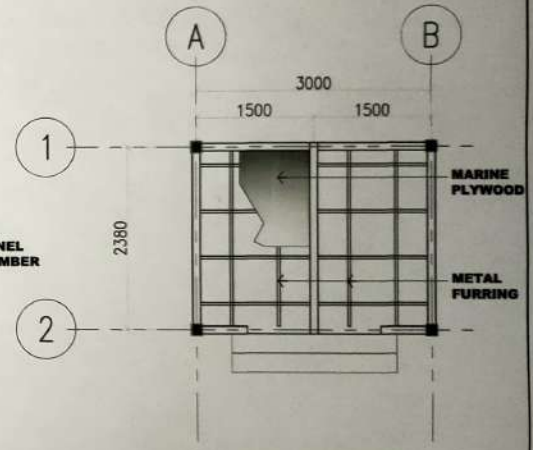
 <p>SORSOGON CITY ENGINEER'S OFFICE</p>	<p>CONSTRUCTION OF SORSOGON CITY SUPER HEALTH CENTER</p> <p>LOCATION: PANGPANG, WEST DISTRICT, SORSOGON CITY</p>	<p>DRAWN:</p> <p><i>maria laraj. malabano, nap</i> ARCHITECT I</p>	<p>RECOMMENDED BY:</p> <p><i>ROL D. DOMER C.E.</i> CITY ENGINEER</p>	<p>APPROVED BY:</p> <p>HON. MA. ESTER E. HAMOR CITY MAYOR</p>	<p>SHEET NO.</p> <p>4 S.5</p>
---	--	--	--	---	-----------------------------------




1 ROOF FRAMING PLAN  
SCALE 1/60M



2 ROOF TRUSS DETAIL  
SCALE 1/40M



3 CEILING FRAMING PLAN  
SCALE 1/60M

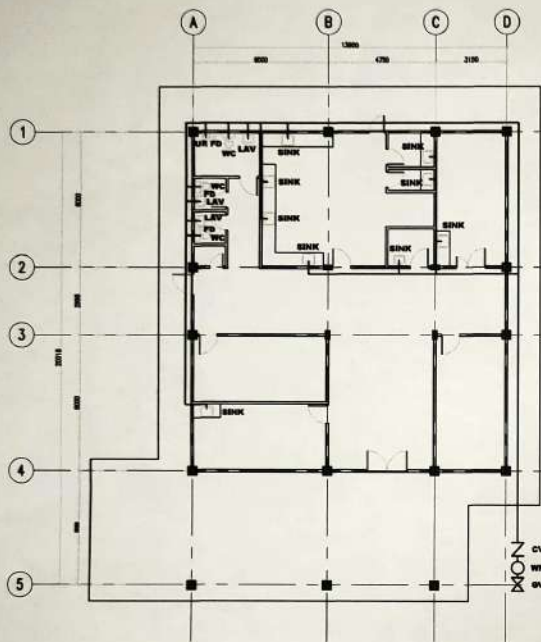
 <p><b>SORSOGON CITY ENGINEER'S OFFICE</b></p>	<p align="center"><b>CONSTRUCTION OF SORSOGON CITY SUPER HEALTH CENTER</b></p> <p>LOCATION: PANGPANG, WEST DISTRICT, SORSOGON CITY</p>	<p>DRAWN:</p> <p align="center"><i>maria laray malabueno, uap</i> ARCHITECT I</p>	<p>RECOMMENDED BY:</p> <p align="center"><i>[Signature]</i> ROEL D. SOMER C.E. CITY ENGINEER</p>	<p>APPROVED BY:</p> <p align="center">HON. MA. ESTER E. HAMOR CITY MAYOR</p>	<p>SHEET NO.</p> <p align="center"><b>5</b> <b>S.5</b></p>
--	--	---	--	--	--



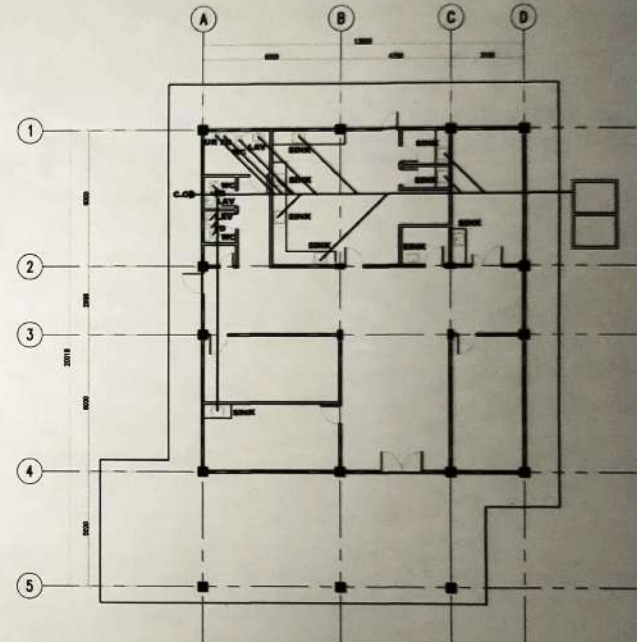
KEY TO SYMBOLS	
WC	WATER CLOSET
LAV	LAVATORY
FD	FLOOR DRAIN
CD	CLEAN OUT
VSTR	VENT STACK THRU ROOF
F	FAUCET
TR	TAP HOLE
DS	DOWN SPOUT
GV	GATE VALVE
CV	CHECK VALVE
CWL	COLD WATER LINE
WPL	WASTE PIPE LINE
GIP	GALVANIZED IRON PIPE
PVC	POLYVINYL CHLORIDE
KS	KITCHEN SINK
CB	CATCH BASIN
RD	ROOF DRAIN
ST	SEPTIC TANK
WH	WATER METER

**PLUMBING / SANITARY NOTES**


- ALL SANITARY WORKS INCLUDED HEREIN SHALL BE EXECUTED ACCORDING TO THE PROVISIONS OF THE PHILIPPINE NATIONAL SANITATION CODE, THE NATIONAL BUILDING CODE AND THE RULES AND REGULATIONS OF SORSOGON CITY. COORDINATE THE DRAWINGS WITH OTHER INDICATED ANY RELOCATION REQUIRED FOR PROPER EXECUTION OF OTHER TRADES SHALL BE WITH PRIOR APPROVAL OF THE DESIGNER.
- ALL PIPES SHALL BE INSTALLED AS INDICATED, ANY RELOCATION REQUIRED FOR PROPER EXECUTION OF OTHER TRADES SHALL BE WITH PRIOR APPROVAL OF THE DESIGNER.
- ALL SLOPES FOR HORIZONTAL DRAINAGE AND SEWER LINES SHALL MAINTAIN 1/4" PER FOOT SLOPE UNLESS OTHERWISE SPECIFIED.
- ALL MATERIALS TO BE USED SHALL BE BRAND NEW AND OF APPROVED TYPE APPROPRIATE FOR BOTH LOCATION AND INTENDED USE.
- ALL PLUMBING INSTALLATION SHALL BE UNDER THE DIRECT SUPERVISION OF A DULY LICENSED MASTER PLUMBER / SANITARY ENGINEER.
- PROVIDE ISOLATION VALVE FOR EVERY TOILET ROOM (ROD LINE).
- SEPTIC TANK CONSTRUCTION MUST FOLLOW SECTION 229 OF THE NATIONAL BUILDING CODE.



**1 POTABLE WATER LAYOUT PLAN**  
SCALE 1200M



**2 SANITARY LAYOUT PLAN**  
SCALE 1200M

 <p><b>SORSOGON CITY ENGINEER'S OFFICE</b></p>	<p align="center"><b>CONSTRUCTION OF SORSOGON CITY SUPER HEALTH CENTER</b></p> <p>LOCATION: PANGPANG, WEST DISTRICT, SORSOGON CITY</p>	<p>DRAWN:</p> <p align="center"><i>maria lara malabana, uap</i> ARCHITECT I</p>	<p>RECOMMENDED BY:</p> <p align="center"><i>ROEL D. DOMER C.E.</i> CITY ENGINEER</p>	<p>APPROVED BY:</p> <p align="center">HON. MA. ESTER E. HAMOR CITY MAYOR</p>	<p>SHEET NO.</p> <p align="center"><b>1</b> <b>P.2</b></p>
		<p>ALL RIGHTS RESERVED. NO PART OF THIS DOCUMENT MAY BE REPRODUCED OR TRANSMITTED IN ANY FORM OR BY ANY MEANS, ELECTRONIC OR MECHANICAL, WITHOUT PERMISSION IN WRITING FROM THE CITY ENGINEER'S OFFICE.</p>			

KEY TO SYMBOLS	
WC	WATER CLOSET
LAV	LAVATORY
FD	FLOOR DRAIN
CO	CLEAN OUT
VSTR	VERT STACK THRU ROOF
F	FAUCET
PH	RAIN HOLE
DS	DOWN SPOUT
GV	GATE VALVE
CV	CHECK VALVE
CWL	COLD WATER LINE
WPL	WASTE PIPE LINE
GIP	GALVANIZED IRON PIPE
PVC	POLYVINYL CHLORIDE
ES	KITCHEN SINK
CB	CATCH BASIN
RD	ROOF DRAIN
ST	SEPTIC TANK
WH	WATER METER

**PLUMBING / SANITARY NOTES**

ALL SANITARY WORKS INCLUDED HEREIN SHALL BE EXECUTED ACCORDING TO THE PROVISIONS OF THE PHILIPPINE NATIONAL SANITATION CODE; THE NATIONAL BUILDING CODE AND THE RULES AND REGULATIONS OF SORSOGON CITY. COORDINATE THE DRAWINGS WITH OTHER INDICATED ANY RELOCATION REQUIRED FOR PROPER EXECUTION OF OTHER TRADES SHALL BE WITH PRIOR APPROVAL OF THE DESIGNER.

ALL PIPES SHALL BE INSTALLED AS INDICATED, ANY RELOCATED REQUIRED FOR PROPER EXECUTION OF OTHER TRADES SHALL BE WITH PRIOR APPROVAL OF THE DESIGNER.

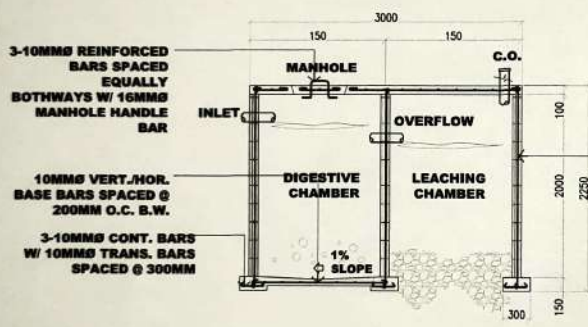
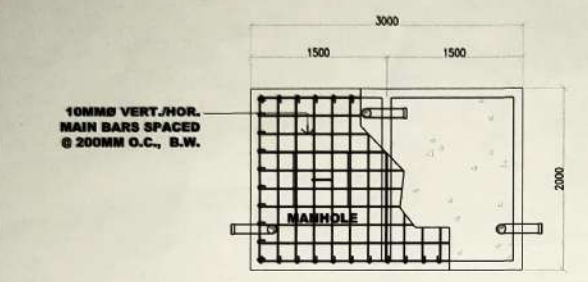
ALL SLOPES FOR HORIZONTAL DRAINAGE AND SEWER LINES SHALL MAINTAIN 1% MINIMUM SLOPE UNLESS OTHERWISE SPECIFIED

ALL MATERIALS TO BE USED SHALL BE BRAND NEW AND OF APPROVED TYPE APPROPRIATE FOR BOTH LOCATION AND INTENDED USE.

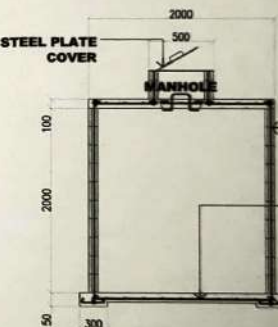
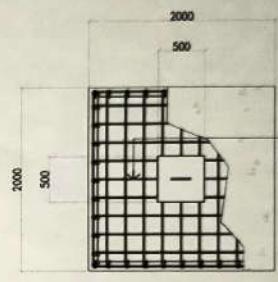
ALL PLUMBING INSTALLATION SHALL BE UNDER THE DIRECT SUPERVISION OF A DAILY LICENSED MASTER PLUMBER / SANITARY ENGINEER.

PROVIDE ISOLATION VALVE FOR EVERY TOILET ROOM INDI LINE.


SEPTIC TANK CONSTRUCTION MUST FOLLOW SECTION 28 OF THE NATIONAL BUILDING CODE.



**1 SEPTIC VAULT PLAN AND SECTION**  
SCALE 1:50M



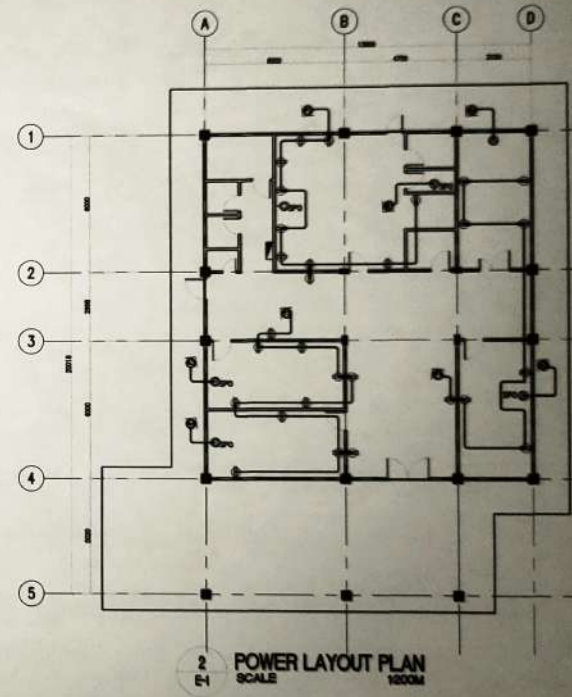
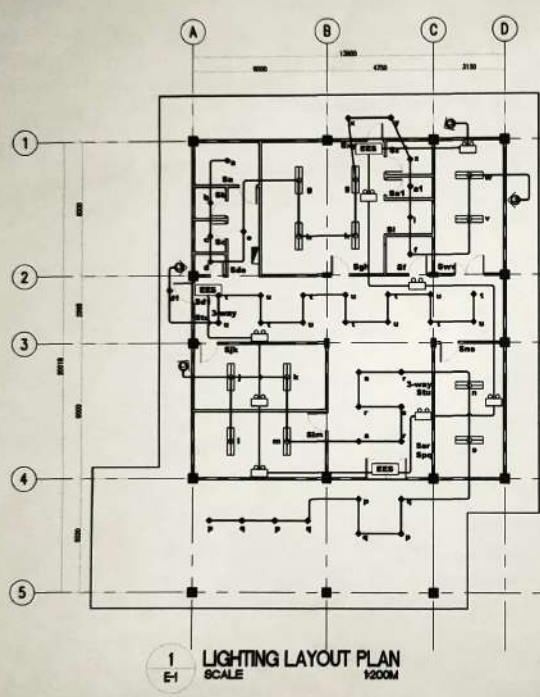
**2 HAZMAT PLAN AND SECTION**  
SCALE 1:50M

 <p><b>SORSOGON CITY ENGINEER'S OFFICE</b></p>	<p align="center"><b>CONSTRUCTION OF SORSOGON CITY SUPER HEALTH CENTER</b></p> <p>LOCATION: PANGPANG, WEST DISTRICT, SORSOGON CITY</p>	<p>DRAWN:</p> <p align="center"><i>maria louisa m. mactabuenas, arch</i> ARCHITECT I</p>	<p>RECOMMENDED BY:</p> <p align="center"><i>ROEL B. DOMER C.E.</i> CITY ENGINEER</p>	<p>APPROVED BY:</p> <p align="center">HON. MA. ESTER E. HAMOR CITY MAYOR</p>	<p>SHEET NO.</p> <p align="center"><b>2</b> <b>P.2</b></p>

**KEY TO SYMBOLS**

	SERVICE ENTRANCE
	MAIN DISTRIBUTION PANEL
	BRANCH DISTRIBUTION PANEL
	SINGLE PHASE OUTLET
	THREE PHASE OUTLET
	SINGLE PHASE SWITCH
	THREE PHASE SWITCH
	SINGLE PHASE MOTOR
	THREE PHASE MOTOR
	SINGLE PHASE TRANSFORMER
	THREE PHASE TRANSFORMER
	SINGLE PHASE METER
	THREE PHASE METER
	SINGLE PHASE FUSE
	THREE PHASE FUSE
	SINGLE PHASE BREAKER
	THREE PHASE BREAKER
	SINGLE PHASE RELAY
	THREE PHASE RELAY
	SINGLE PHASE CONTACTOR
	THREE PHASE CONTACTOR
	SINGLE PHASE RELAY-CONTACTOR
	THREE PHASE RELAY-CONTACTOR
	SINGLE PHASE RELAY-CONTACTOR-MOTOR
	THREE PHASE RELAY-CONTACTOR-MOTOR

- ELECTRICAL NOTES:-**
- ALL ELECTRICAL WORKS HEREIN SHALL COMPLY WITH THE PROVISIONS OF THE LATEST EDITION OF THE PHILIPPINE ELECTRICAL CODE, THE RULES & REGULATIONS OF SORSOGON CITY & INTERNATIONAL CONVENTIONS.
  - TYPE OF SERVICE SHALL BE SINGLE PHASE 2 WIRE SYSTEM, 220V, 60 HZ. AND TERMINALS TO BE ONLY INSULATED COPPER TO THE BUILDING.
  - METHOD OF WIRING FOR SERVICE ENTRANCEMENT SHALL BE IN RIGID METAL CONDUIT & BRANCH CONDUIT IN FLEXIBLE CONDUIT FOR WIRE COPING AND CONDUIT TO BE PROTECTED BY PROTECTIVE FITTINGS AND SUPPORTS.
  - ALL WIRING AND COMPONENTS SHALL BE APPROVED AND OF APPROVED TYPE. FORMERLY LISTED AND APPROVED BY THE BUREAU OF FIRE PREVENTION.
  - ALL LIGHTING AND COMPONENTS SHALL BE APPROVED AND OF APPROVED TYPE. FORMERLY LISTED AND APPROVED BY THE BUREAU OF FIRE PREVENTION.
  - SWITCHES, RELAYS AND ACCESSORIES, FUSES AND JUNCTION BOXES OF APPROVED TYPE SHALL BE INSTALLED IN CONFORMANCE WITH THE PHILIPPINE ELECTRICAL CODE. ALTHOUGH SUCH DEVICES ARE NOT SHOWN ON THE PLANS AND NOT REFERRED TO IN THE NOTES.
  - WIRING HEIGHTS SHALL BE AS FOLLOWS:  
LIGHT SWITCH - 1.80M FROM FIN FLOOR LINE  
OUTLET C.B. - 0.30M FROM FIN FLOOR LINE  
FLOOR BOXES - 1.80M FROM FIN FLOOR LINE
  - ALL WIRING INSTALLATIONS SHALL BE IN RIGID METAL CONDUIT.
  - ALL ELECTRICAL WORK SHALL BE DONE UNDER THE SUPERVISION AND IMMEDIATE SUPERVISION OF A LICENSED REGISTERED ELECTRICAL ENGINEER OR A REGISTERED MASTER ELECTRICIAN.



<p>SORSOGON CITY CITY ENGINEER'S OFFICE</p>	<p><b>CONSTRUCTION OF SORSOGON CITY SUPER HEALTH CENTER</b></p> <p>LOCATION: PANGPANG, WEST DISTRICT, SORSOGON CITY</p>	DRAWN:	RECOMMENDED BY:	APPROVED BY:	SHEET NO.
		<p><i>maria lara malabana, uap</i> ARCHITECT I</p>	<p>ROD D. DOMER C.E. CIVIL ENGINEER</p>	<p>HON. MA. ESTER E. HAMOR CITY MAYOR</p>	<p><b>1</b> <b>E.2</b></p>



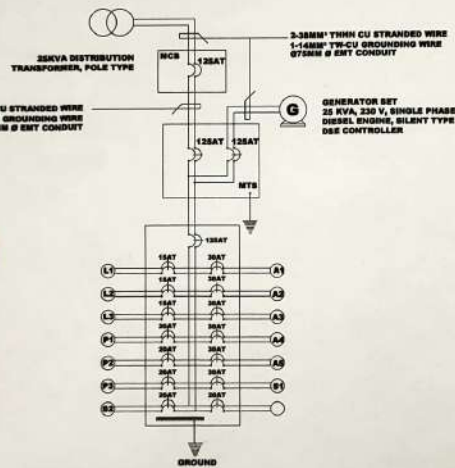
- PINLIGHT RECESSED INDOOR LIGHTING (SEE FIG. 1)
- PINLIGHT OUTDOOR LIGHTING (SEE FIG. 2)
- 2X3 TUBE LIGHT W/ 2X60 LOUVER HOUSING RECESSED 12" X 48", 300MM X 1200MM (SEE FIG. 3)
- EMERGENCY EXIT SIGNAGE (SEE FIG. 4)
- EMERGENCY LIGHT RECHARGEABLE (SEE FIG. 5)
- LIGHTING SWITCH
- LIGHTING SWITCH, 3 WAY, 2 GANG
- PANEL BOARD
- CIRCUIT NUMBER
- CIRCUIT CONNECTION, CONDUIT INSIDE CEILING



Figure 3



Figure 5



CKT NO.	DESCRIPTION	NO. OF OUTLETS			POWER	CURRENT RATING	CB RATING	AT	P	WIRE AND CONDUIT SIZE
		L.O.	S.O.	ETC						
L1	LIGHTING OUTLET	20			720	5.1264	15	2		3-0.000" THHN-CU STRANDED WIRE GENERAL, EMT THIRNBALL
L2	LIGHTING OUTLET	10			360	2	15	2		3-0.000" THHN-CU STRANDED WIRE GENERAL, EMT THIRNBALL
L3	LIGHTING OUTLET	10		0	1340	6.6261	15	2		3-0.000" THHN-CU STRANDED WIRE GENERAL, EMT THIRNBALL, 1-0.000" TH-CU GROUNDING WIRE Ø75MM Ø EMT THIRNBALL
P1	CONVENIENCE OUTLET		0		1000	6.6261	20	2		3-0.000" THHN-CU STRANDED WIRE GENERAL, EMT THIRNBALL, 1-0.000" TH-CU GROUNDING WIRE Ø75MM Ø EMT THIRNBALL
P2	CONVENIENCE OUTLET		0	2	2000	6.6261	20	2		3-0.000" THHN-CU STRANDED WIRE GENERAL, EMT THIRNBALL, 1-0.000" TH-CU GROUNDING WIRE Ø75MM Ø EMT THIRNBALL
P3	CONVENIENCE OUTLET		11		2000	6.6261	20	2		3-0.000" THHN-CU STRANDED WIRE GENERAL, EMT THIRNBALL, 1-0.000" TH-CU GROUNDING WIRE Ø75MM Ø EMT THIRNBALL
A1	ACU OUTLET			1	1000	7.2261	20	2		3-0.000" THHN-CU STRANDED WIRE GENERAL, EMT THIRNBALL, 1-0.000" TH-CU GROUNDING WIRE Ø75MM Ø EMT THIRNBALL
A2	ACU OUTLET			1	1000	6.6217	20	2		3-0.000" THHN-CU STRANDED WIRE GENERAL, EMT THIRNBALL, 1-0.000" TH-CU GROUNDING WIRE Ø75MM Ø EMT THIRNBALL
A3	ACU OUTLET			1	1000	6.6217	20	2		3-0.000" THHN-CU STRANDED WIRE GENERAL, EMT THIRNBALL, 1-0.000" TH-CU GROUNDING WIRE Ø75MM Ø EMT THIRNBALL
A4	ACU OUTLET			1	1000	6.6217	20	2		3-0.000" THHN-CU STRANDED WIRE GENERAL, EMT THIRNBALL, 1-0.000" TH-CU GROUNDING WIRE Ø75MM Ø EMT THIRNBALL
A5	ACU OUTLET			1	1000	6.6217	20	2		3-0.000" THHN-CU STRANDED WIRE GENERAL, EMT THIRNBALL, 1-0.000" TH-CU GROUNDING WIRE Ø75MM Ø EMT THIRNBALL
B1	AUTO CLAVE MACHINE			1	2000	13.261	20	2		3-0.000" THHN-CU STRANDED WIRE GENERAL, EMT THIRNBALL, 1-0.000" TH-CU GROUNDING WIRE Ø75MM Ø EMT THIRNBALL
B2	FIRE DETECTION AND ALARM SYSTEM			1	1000	5.4174	20	2		3-0.000" THHN-CU STRANDED WIRE GENERAL, EMT THIRNBALL, 1-0.000" TH-CU GROUNDING WIRE Ø75MM Ø EMT THIRNBALL
	SPARE				1000	4.3276	20	2		3-0.000" THHN-CU STRANDED WIRE, 1-0.000" TH-CU GROUNDING WIRE Ø75MM Ø EMT THIRNBALL
RAIN SUPER HEALTH CENTER (RM)		27	27	17	21000	66.426	152	2		3-0.000" THHN-CU STRANDED WIRE, 1-0.000" TH-CU GROUNDING WIRE Ø75MM Ø EMT THIRNBALL

DRAWN:

RECOMMENDED BY:

APPROVED BY:

SHEET NO.



CONSTRUCTION OF SORSOGON CITY SUPER HEALTH CENTER

LOCATION: PANGPANG, WEST DISTRICT, SORSOGON CITY

*maria larafa malabonera, uap*  
ARCHITECT I

*ROEL D. DOMER C.E.*  
CITY ENGINEER

HON. MA. ESTER E. HAMOR  
CITY MAYOR

2  
E.2