
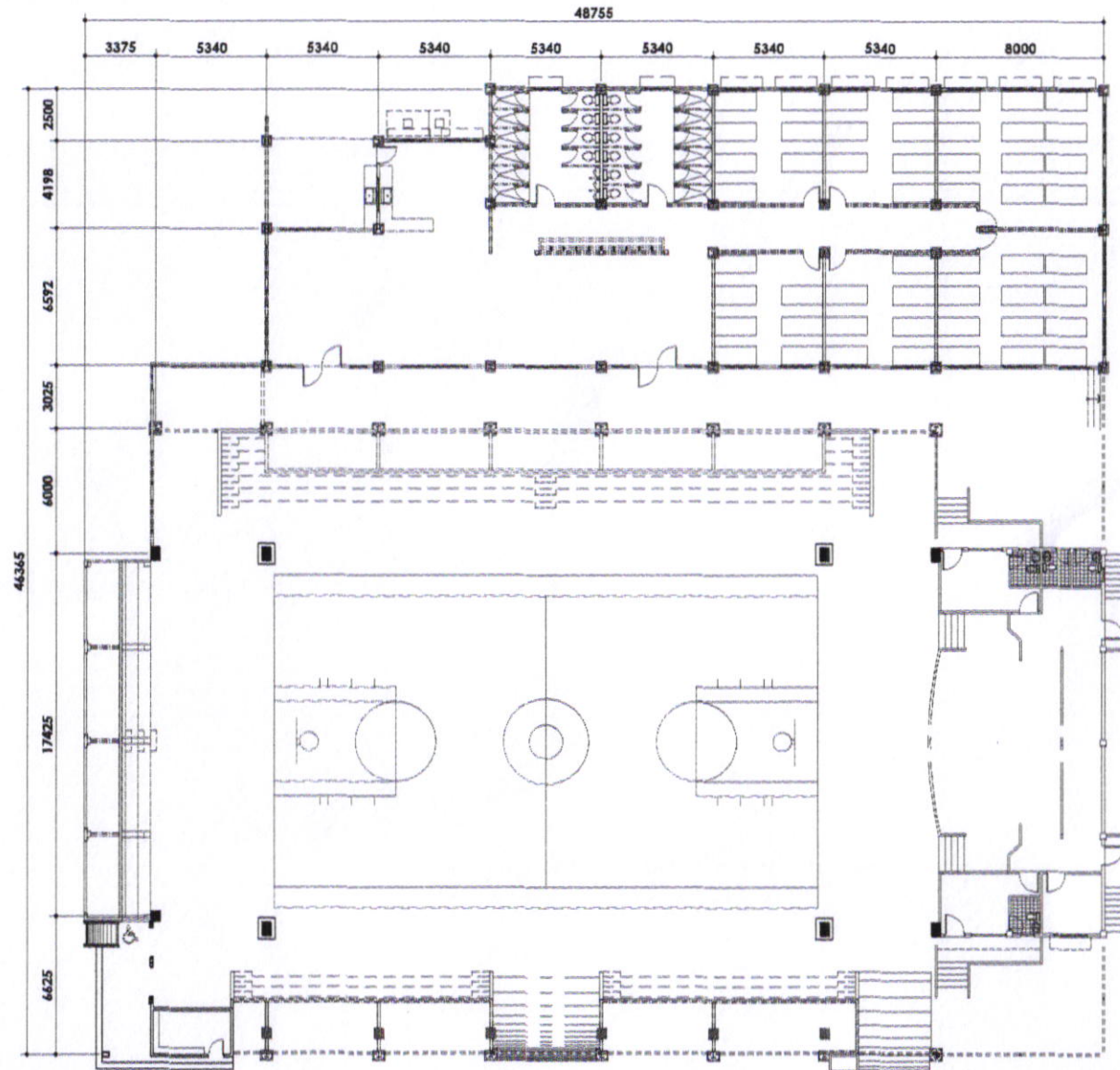





P E R S P E C T I V E

 <p>SORSOGON CITY CITY ENGINEER'S OFFICE</p>	PROJECT TITLE:	DRAWN BY:	RECOMMENDED BY:	APPROVED BY:	SHEET CONTENT:	SHEET NO.
	REHABILITATION OF MULTI-PURPOSE BUILDING				AS - SHOWN	A-01
	LOC: BRGY. POBALCION, BACON DIST. SORSOGON CITY	<u>IZRA D. HABLA</u> ARCHITECTURAL AIDE	<u>ROEL D. DOMER, C.E./RMP</u> CIC-CITY ENGINEER	<u>MA. ESTER E. HAMOR</u> CITY MAYOR		



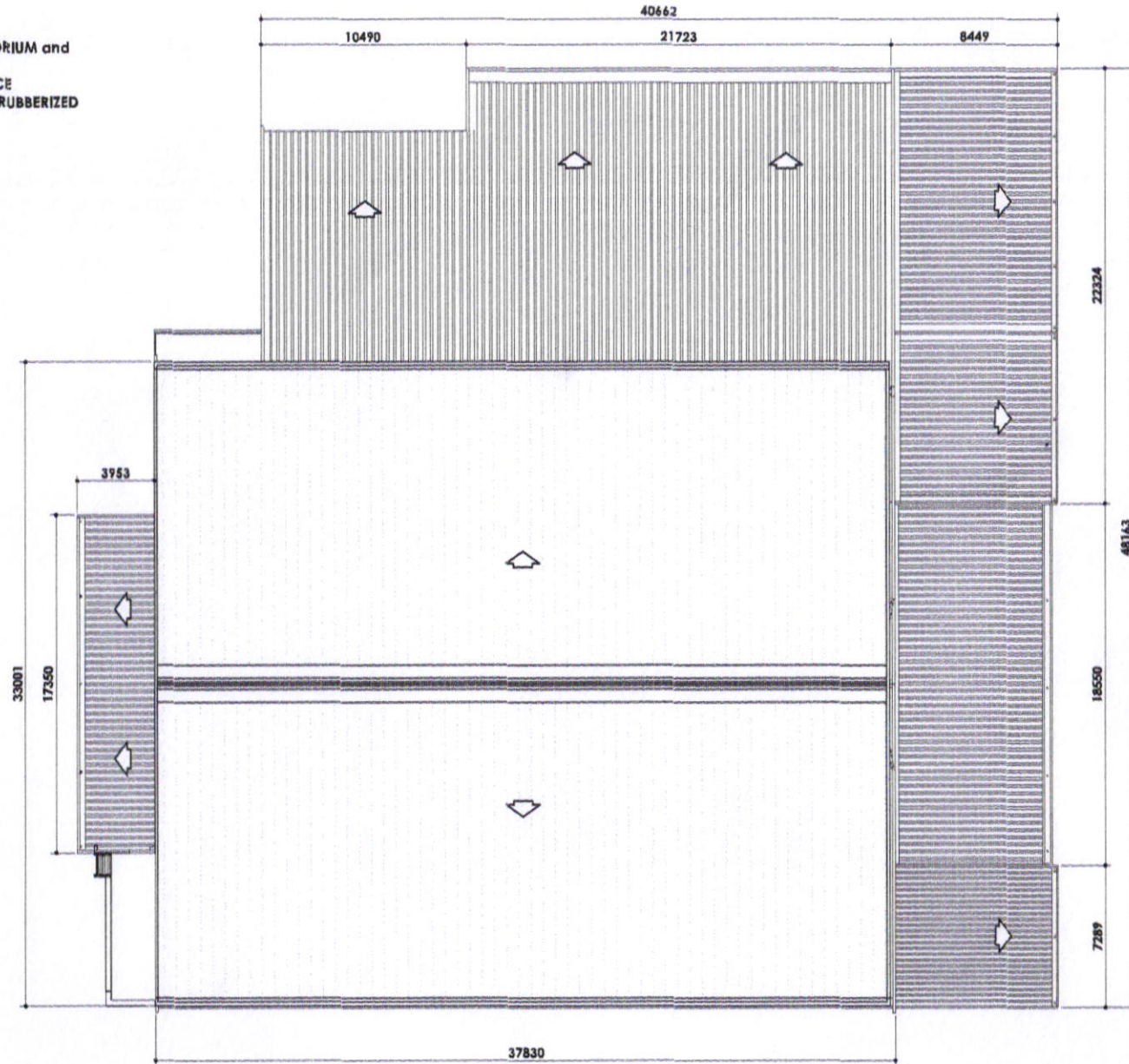
1 FLOOR PLAN
A-02 SCALE NTB.

- NOTE :**
- ALL INTERIOR PAINT OF BACIA AUDITORIUM and TRAINING CENTER TO BE REPAINTED
 - ALL G.I. SHEET ROOFING TO BE REPLACE
 - BASKETBALL COURT TO PAINTED WITH RUBBERIZED PAINTING

 <p>SORSOGON CITY CITY ENGINEER'S OFFICE</p>	PROJECT TITLE:	DRAWN BY:	RECOMMENDED BY:	APPROVED BY:	SHEET CONTENT:	SHEET NO.:
	REHABILITATION OF MULTI - PURPOSE BUILDING				AS - SHOWN	A-02
	LOC: BRGY. POBALCION, BACON DIST. SORSOGON CITY	IZRA D. HABLA ARCHITECTURAL AIDE	ROEL D. DOMER, C.E./RMP D/C-CITY ENGINEER	MA. ESTER E. HAMOR CITY MAYOR		

NOTE :

- ALL INTERIOR PAINT OF BACIA AUDITORIUM and TRAINING CENTER TO BE REPAINTED
- ALL G.I. SHEET ROOFING TO BE REPLACE
- BASKETBALL COURT TO PAINTED WITH RUBBERIZED PAINTING

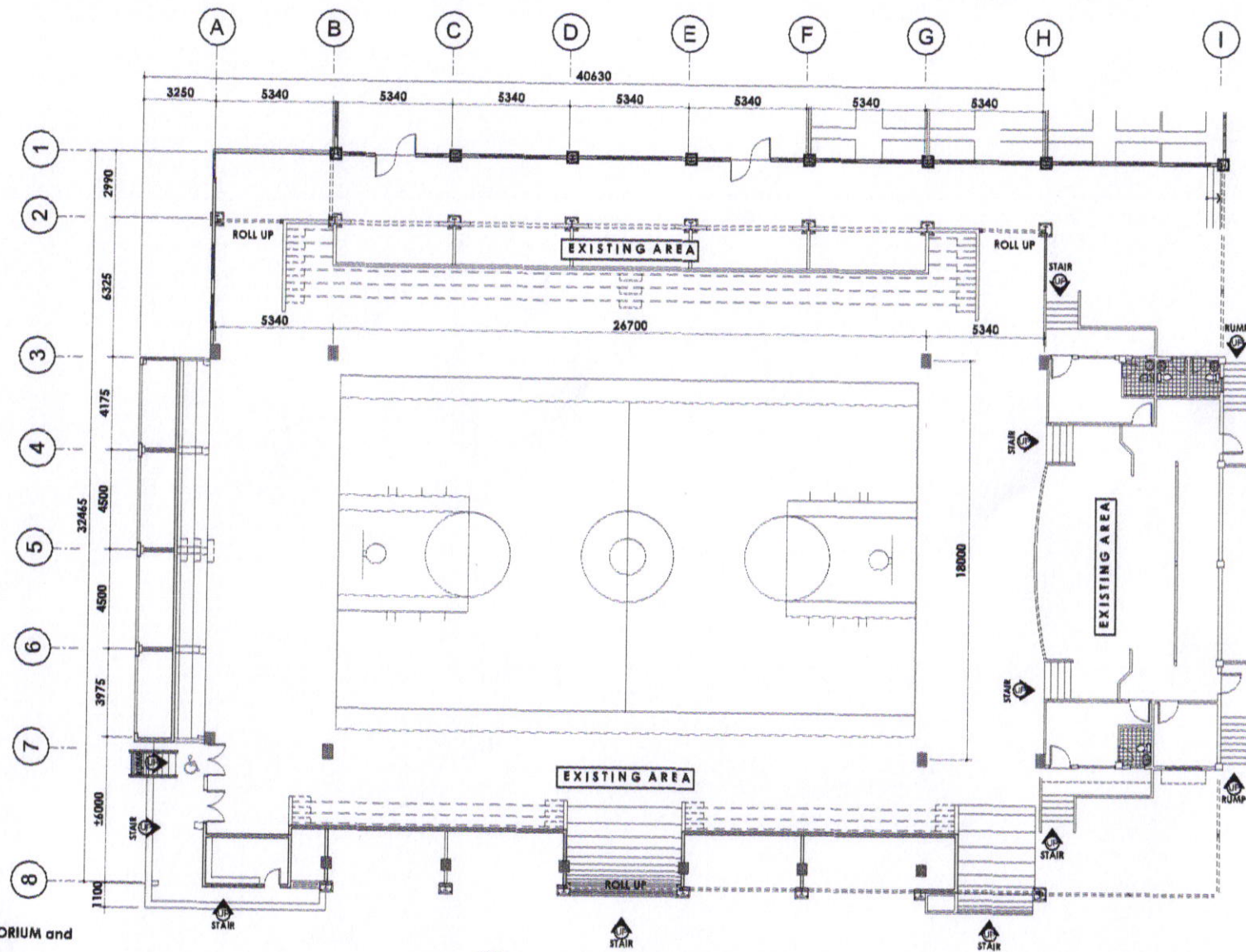


1 ROOF PLAN
A-02 SCALE NTS.



SORSOGON CITY
**CITY ENGINEER'S
OFFICE**


PROJECT TITLE:	DRAWN BY:	RECOMMENDED BY:	APPROVED BY:	SHEET CONTENT:	SHEET NO.
REHABILITATION OF MULTI - PURPOSE BUILDING				AS - SHOWN	A-03
LOC: BRGY. POBALCION, BACON DIST. SORSOGON CITY	IZRA D. HABLA ARCHITECTURAL Aide	ROEL D. DOMER, C.E./RMP DIC-CITY ENGINEER	MA. ESTER E. HAMOR CITY MAYOR		

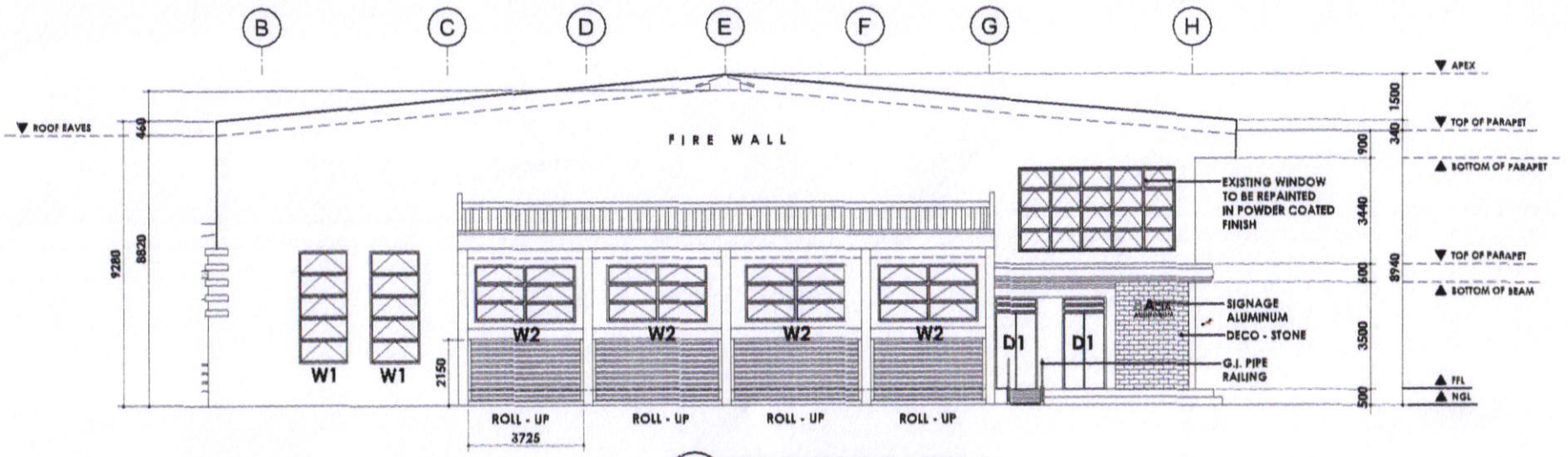


NOTE :

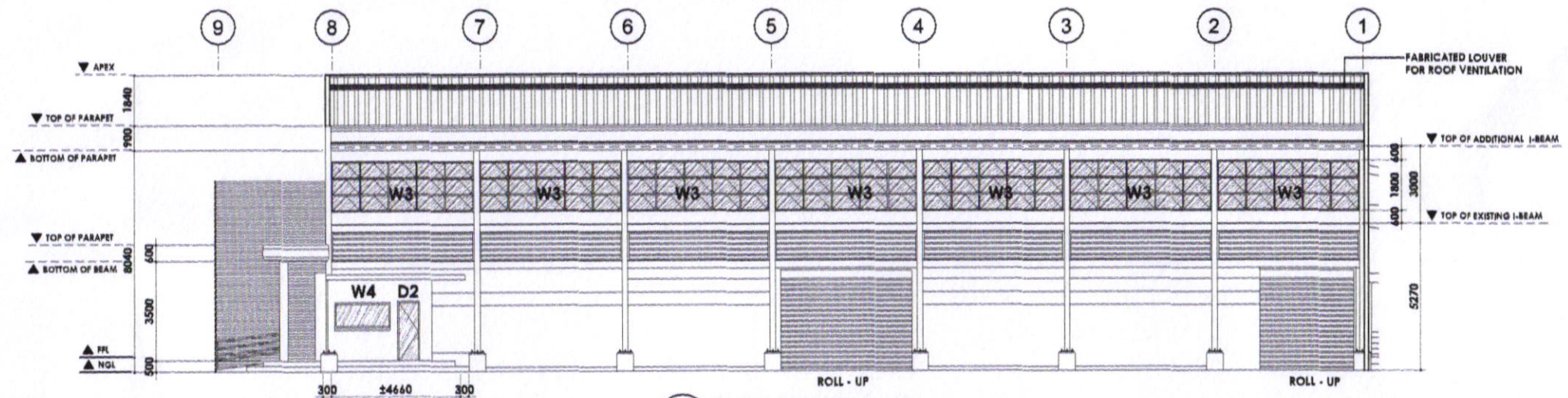
- ALL INTERIOR PAINT OF BACIA AUDITORIUM and TRAINING CENTER TO BE REPAINTED
- ALL G.I. SHEET ROOFING TO BE REPLACE
- BASKETBALL COURT TO PAINTED WITH RUBBERIZED PAINTING

1 ARCHITECTURAL FLOOR PLAN
 A-02 SCALE 1: 200 m

 <p>SORSOGON CITY CITY ENGINEER'S OFFICE</p>	PROJECT TITLE:	DRAWN BY:	RECOMMENDED BY:	APPROVED BY:	SHEET CONTENT:	SHEET NO.
	REHABILITATION OF MULTI-PURPOSE BUILDING					
	LOC: BRGY. POBALCION, BACON DIST. SORSOGON CITY	IZRA D. HABLA ARCHITECTURAL AIDE	ROEL D. DOMER, C.E./RMP CIC-CITY ENGINEER	MA. ESTER E. HAMOR CITY MAYOR	AS - SHOWN	A-04



1 FRONT VIEW ELEVATION - 1
A-04 SCALE 1: 150 m

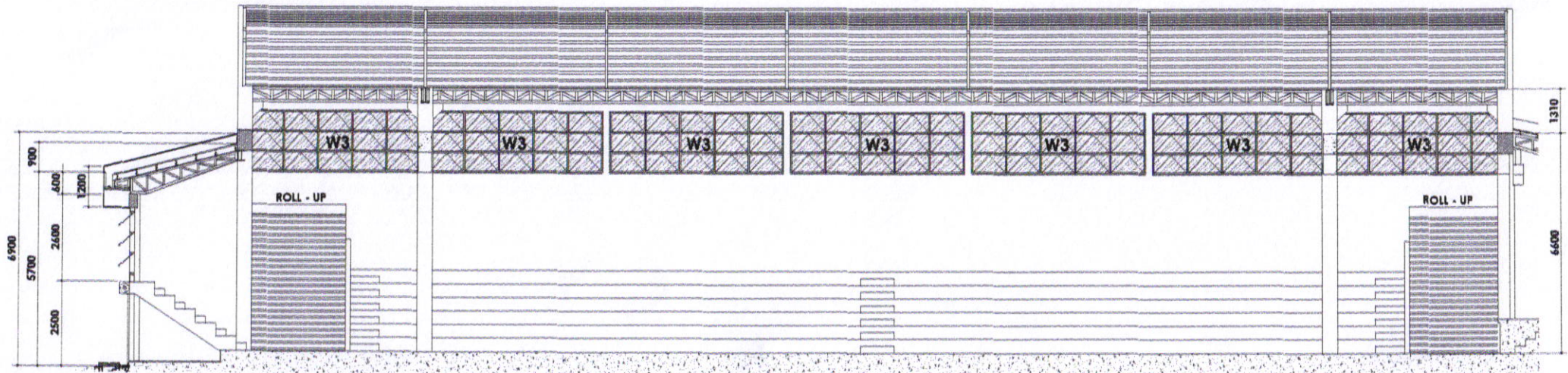


1 RIGHT SIDE ELEVATION
A-05 SCALE 1: 150 m

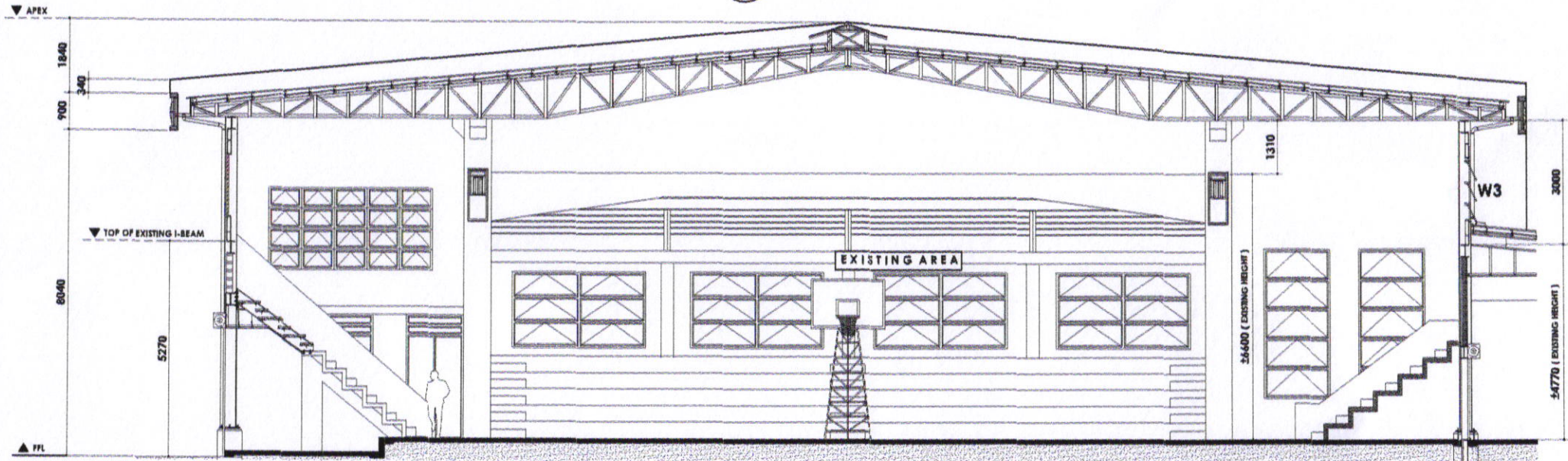


SORSOGON CITY
CITY ENGINEER'S
OFFICE

PROJECT TITLE:	DRAWN BY:	RECOMMENDED BY:	APPROVED BY:	SHEET CONTENT:	SHEET NO.
REHABILITATION OF MULTI-PURPOSE BUILDING				AS - SHOWN	A-05
LOC: BRGY. POBALCION, BACON DIST. SORSOGON CITY	IZRA D. HABLA ARCHITECTURAL AIDE	ROEL D. DOMER, C.E./RMP CIC-CITY ENGINEER	MA. ESTER E. HAMOR CITY MAYOR		



1 SECTION - C
A-06 SCALE 1:100 m

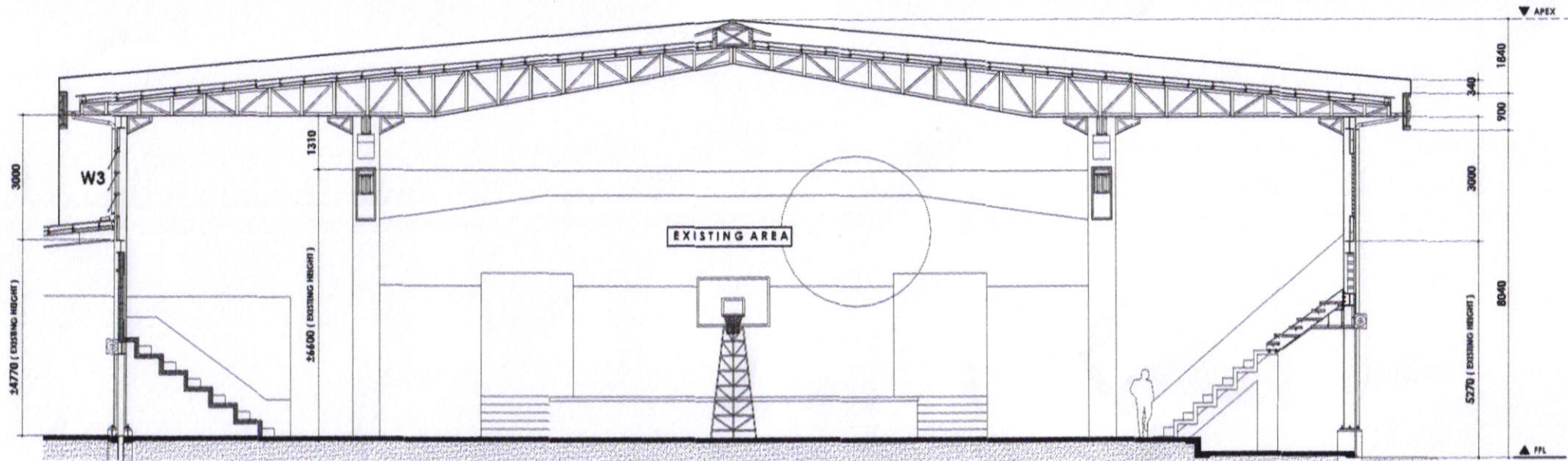


1 SECTION - A
A-06 SCALE 1:100 m



SORSOGON CITY
CITY ENGINEER'S
OFFICE

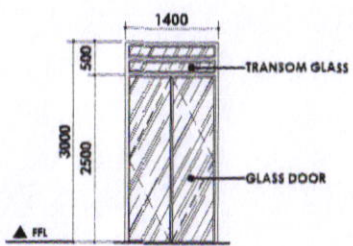
PROJECT TITLE:	DRAWN BY:	RECOMMENDED BY:	APPROVED BY:	SHEET CONTENT:	SHEET NO.
REHABILITATION OF MULTI - PURPOSE BUILDING				AS - SHOWN	A-06
LOC: BRGY. POBALGION, BACON DIST. SORSOGON CITY	IZRA D. HABLA ARCHITECTURAL AIDE	ROEL D. DOMER, C.E./RMP OIC-CITY ENGINEER	MA. ESTER E. HAMOR CITY MAYOR		



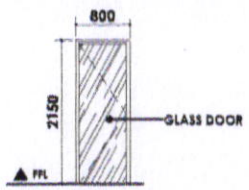
1 SECTION - B
A-07 SCALE 1:100 m

NOTE :

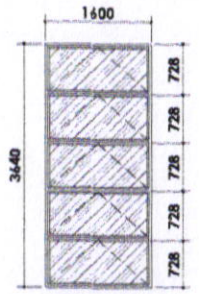
- ALL INTERIOR PAINT OF BACIA AUDITORIUM TO BE REPAINTED
- ALL G.I. SHEET ROOFING TO BE REPLACE
- BASKETBALL COURT TO PAINTED WITH RUBBERIZED PAINTING



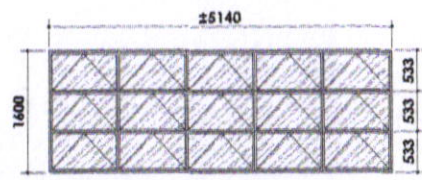
D-1
ANALOK DOUBLE SWING GLASS DOOR
2-SETS



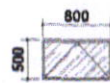
D-2
ANALOK SWING GLASS DOOR
1-SET



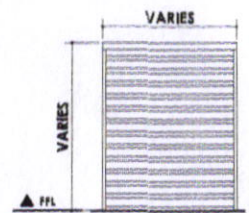
W-1
AWNING WINDOW IN POWDER COATED
2-SETS



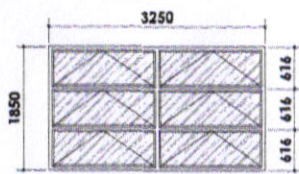
W-3
AWNING WINDOW IN POWDER COATED
14 - SETS



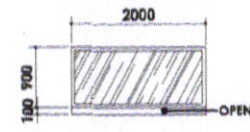
W-5
AWNING WINDOW IN POWDER COATED



ROLL UP DOOR



W-2
AWNING WINDOW IN POWDER COATED
4-SETS



W-4
FIXED GLASS WINDOW IN POWDER COATED
1-SET



SORSOGON CITY
CITY ENGINEER'S OFFICE

PROJECT TITLE:	DRAWN BY:	RECOMMENDED BY:	APPROVED BY:	SHEET CONTENT:	SHEET NO.
REHABILITATION OF MULTI-PURPOSE BUILDING	IZRA D. HABLA ARCHITECTURAL AIDE	ROEL D. DOMER, C.E./RMP CIC-CITY ENGINEER	MA. ESTER E. HAMOR CITY MAYOR	AS - SHOWN	A-07
LOC: BRGY. POBALCION, BACON DIST. SORSOGON CITY					