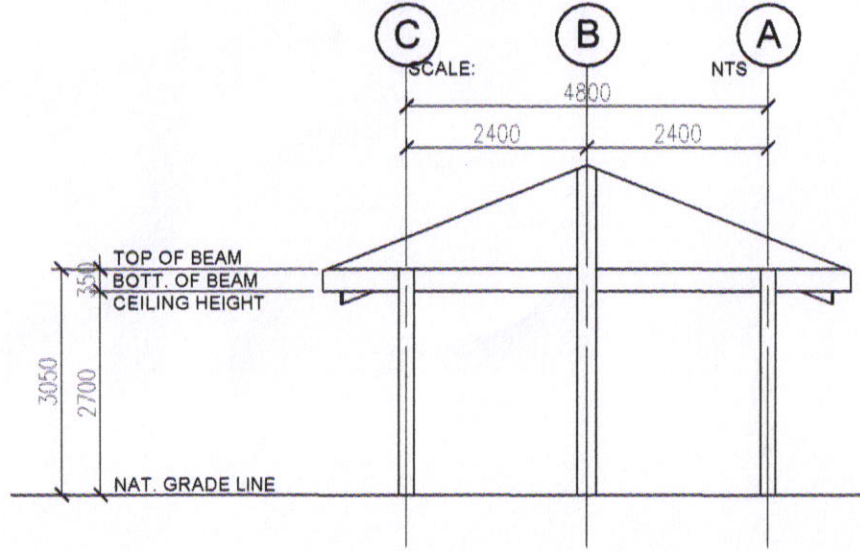
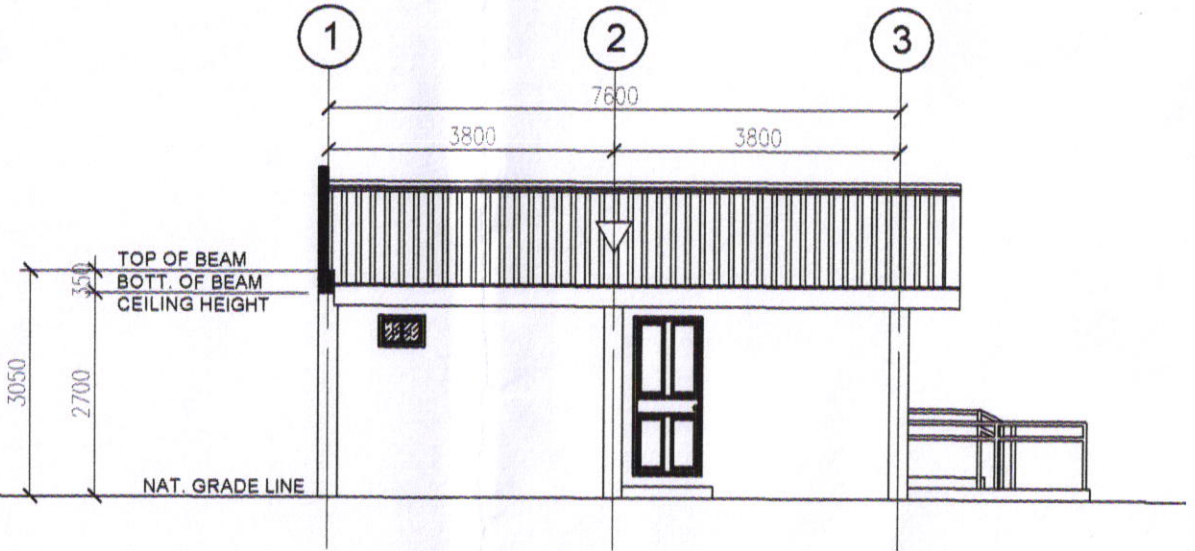


FRONT ELEVATION
SCALE: NTS


RIGHT ELEVATION
SCALE: NTS

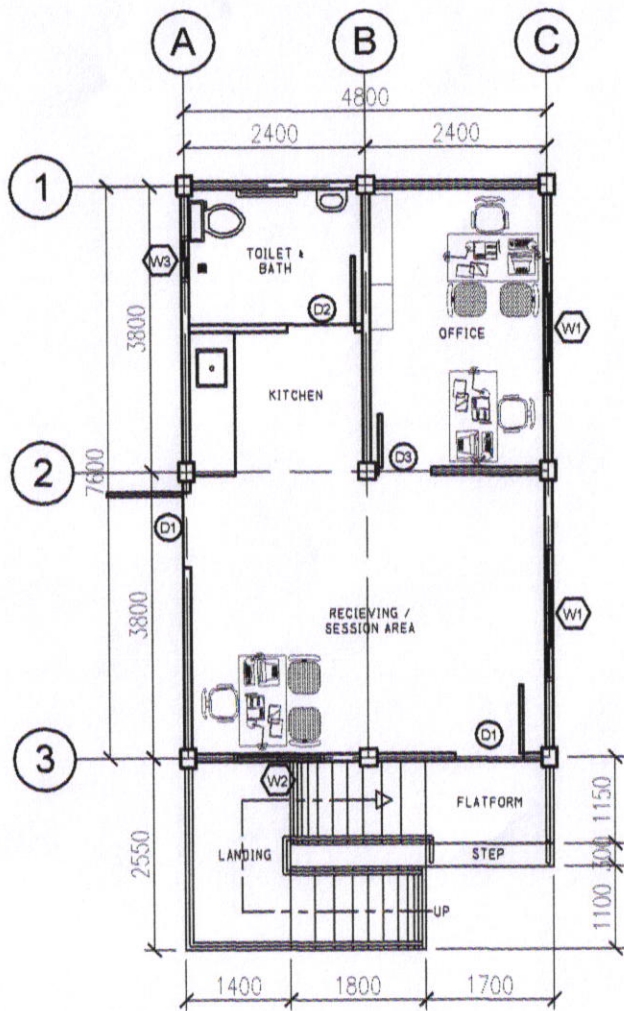


REAR ELEVATION
SCALE: NTS



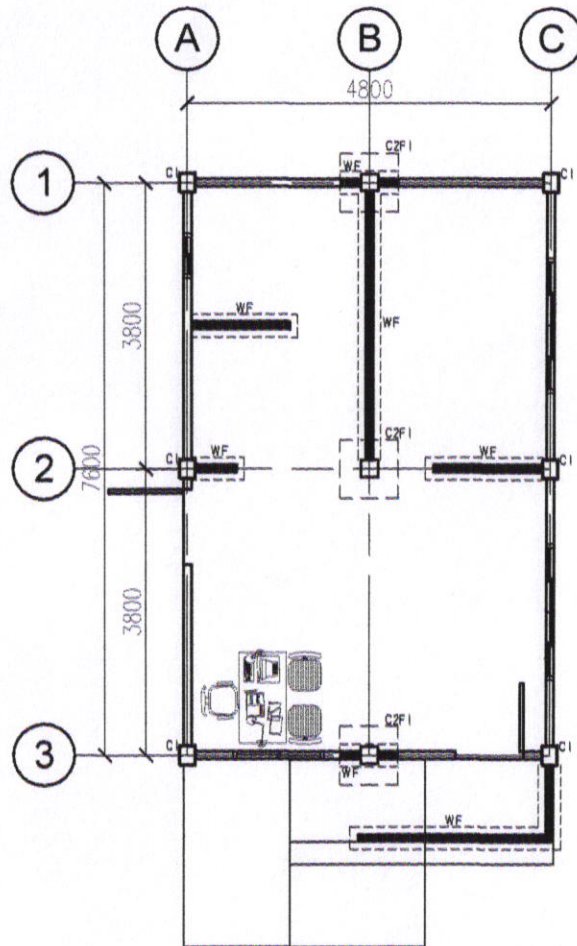
LEFT ELEVATION
SCALE: NTS

PREPARED FROM:	PROJECT TITLE:	DRAWN:	RECOMMENDED BY:	APPROVED BY:	SHEET NO.
 SORSOGON CITY CITY ENGINEER'S OFFICE	CONSTRUCTION OF MULTI PURPOSE BUILDING				
	LOCATION: BUENAVISTA BACON DISTRICT SORSOGON CITY	ROY M. HUBILLA ENGINEERING AIDE	ROEL D. DOMER, CE/RMP CIC-CITY ENGINEER	HON. MA. ESTER E. HAMOR CITY MAYOR	



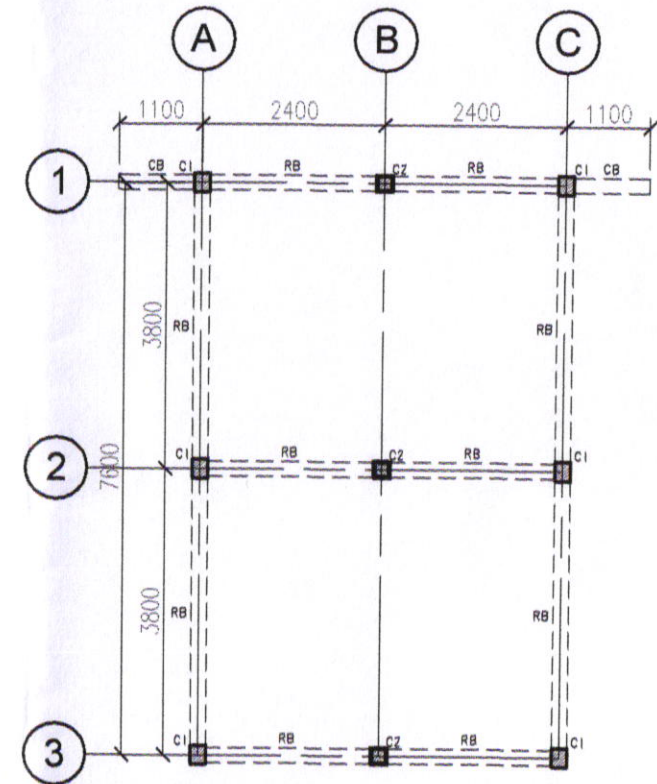
FLOOR PLAN

SCALE: NTS



FOUNDATION PLAN

SCALE: NTS



ROOF BEAM PLAN

SCALE: NTS

PREPARED FROM:

PROJECT TITLE:

DRAWN:

RECOMMENDED BY:

APPROVED BY:

SHEET NO.



SORSOGON CITY
CITY ENGINEER'S OFFICE

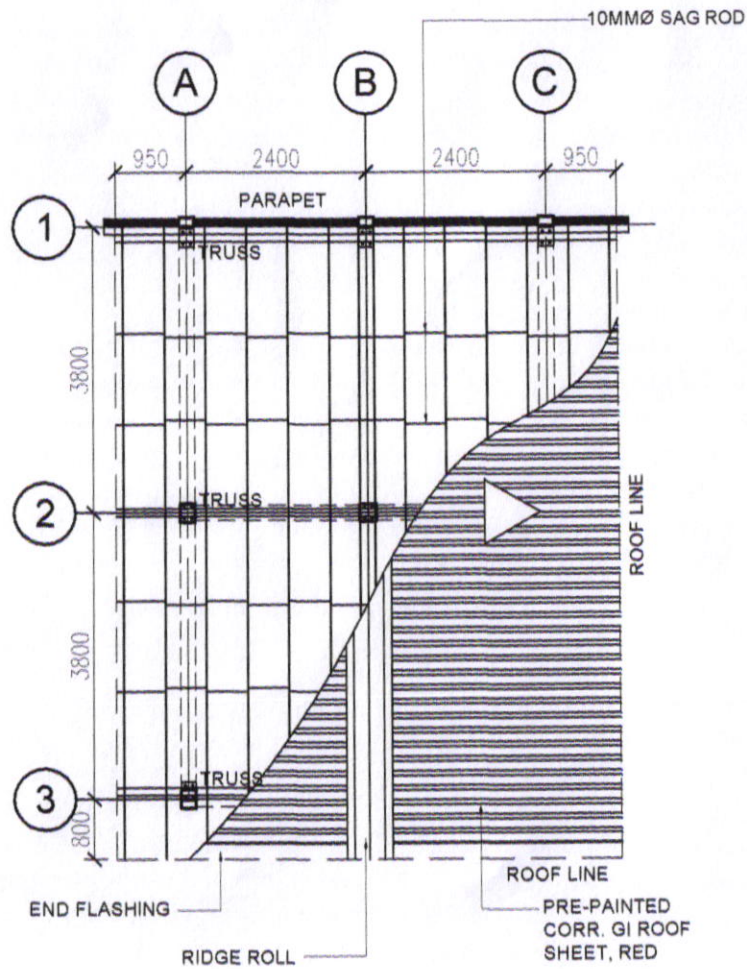
CONSTRUCTION OF MULTI PURPOSE BUILDING

LOCATION: BUENAVISTA BACON DISTRICT SORSOGON CITY

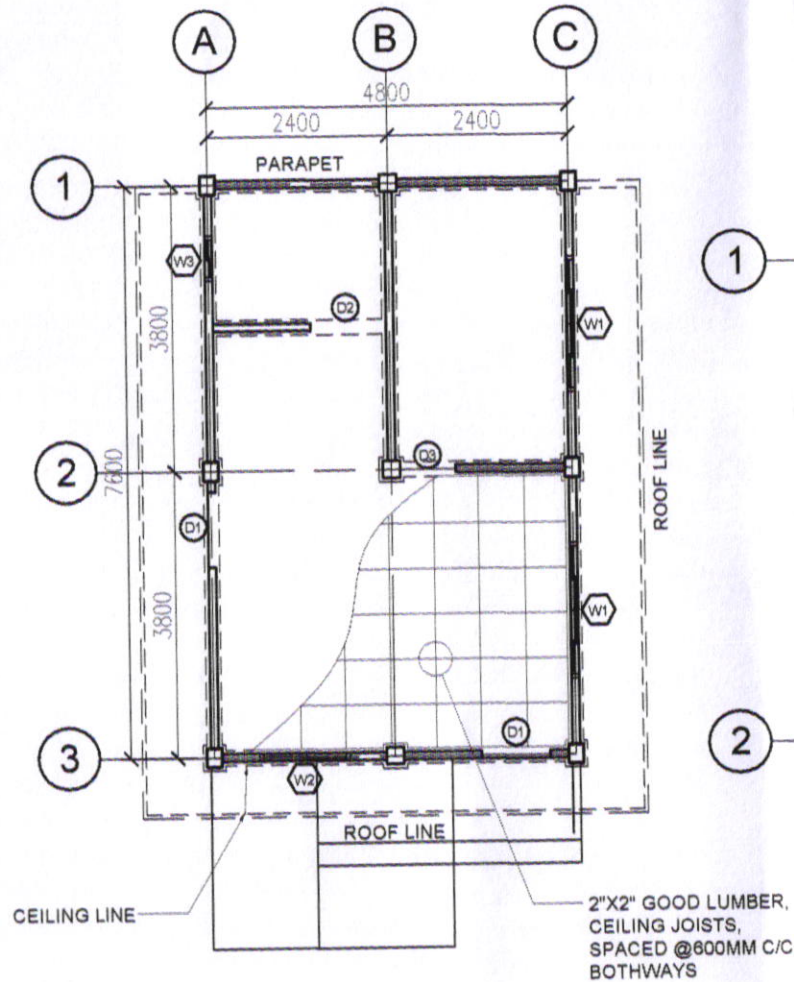
ROY M. HUBILLA
ENGINEERING AIDE

ROEL D. DOMER, CE/RMP
CIC-CITY ENGINEER

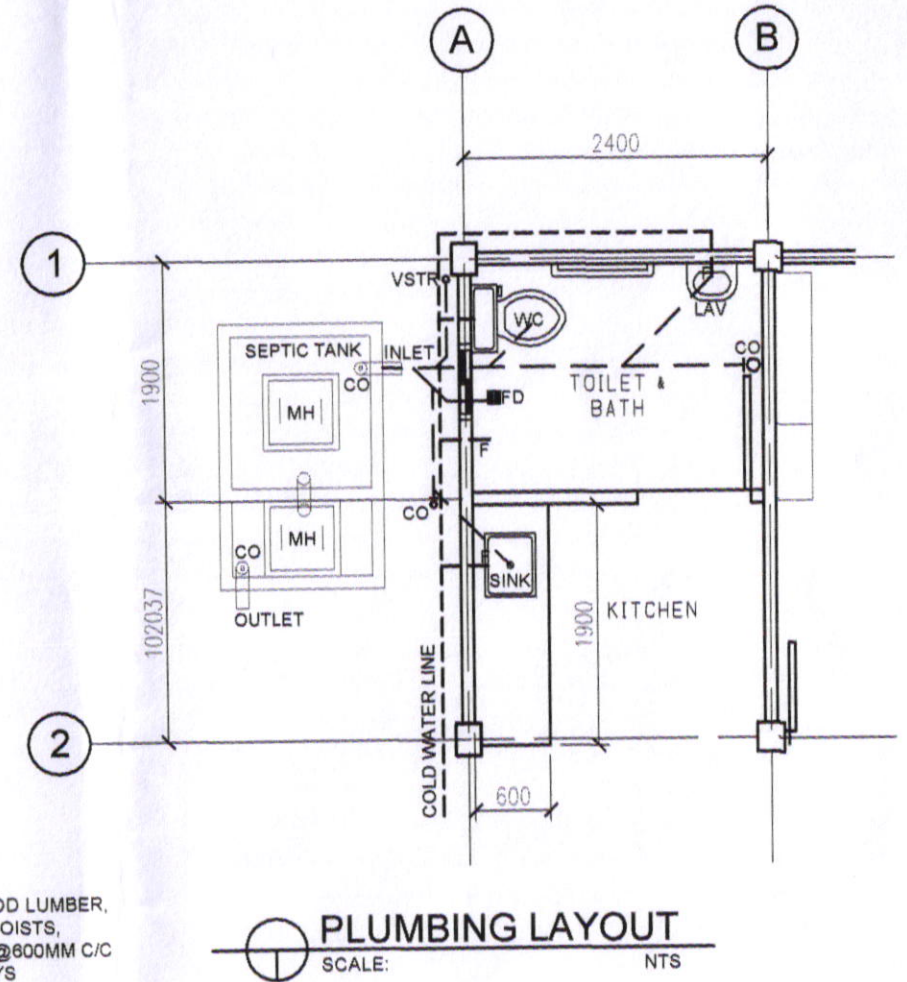
HON. MA. ESTER E. HAMOR
CITY MAYOR



ROOF PLAN
SCALE: _____ NTS



CEILING PLAN
SCALE: _____ NTS



PLUMBING LAYOUT
SCALE: _____ NTS

PREPARED FROM:

PROJECT TITLE:

DRAWN:

RECOMMENDED BY:

APPROVED BY:

SHEET NO.



SORSOGON CITY
CITY ENGINEER'S OFFICE

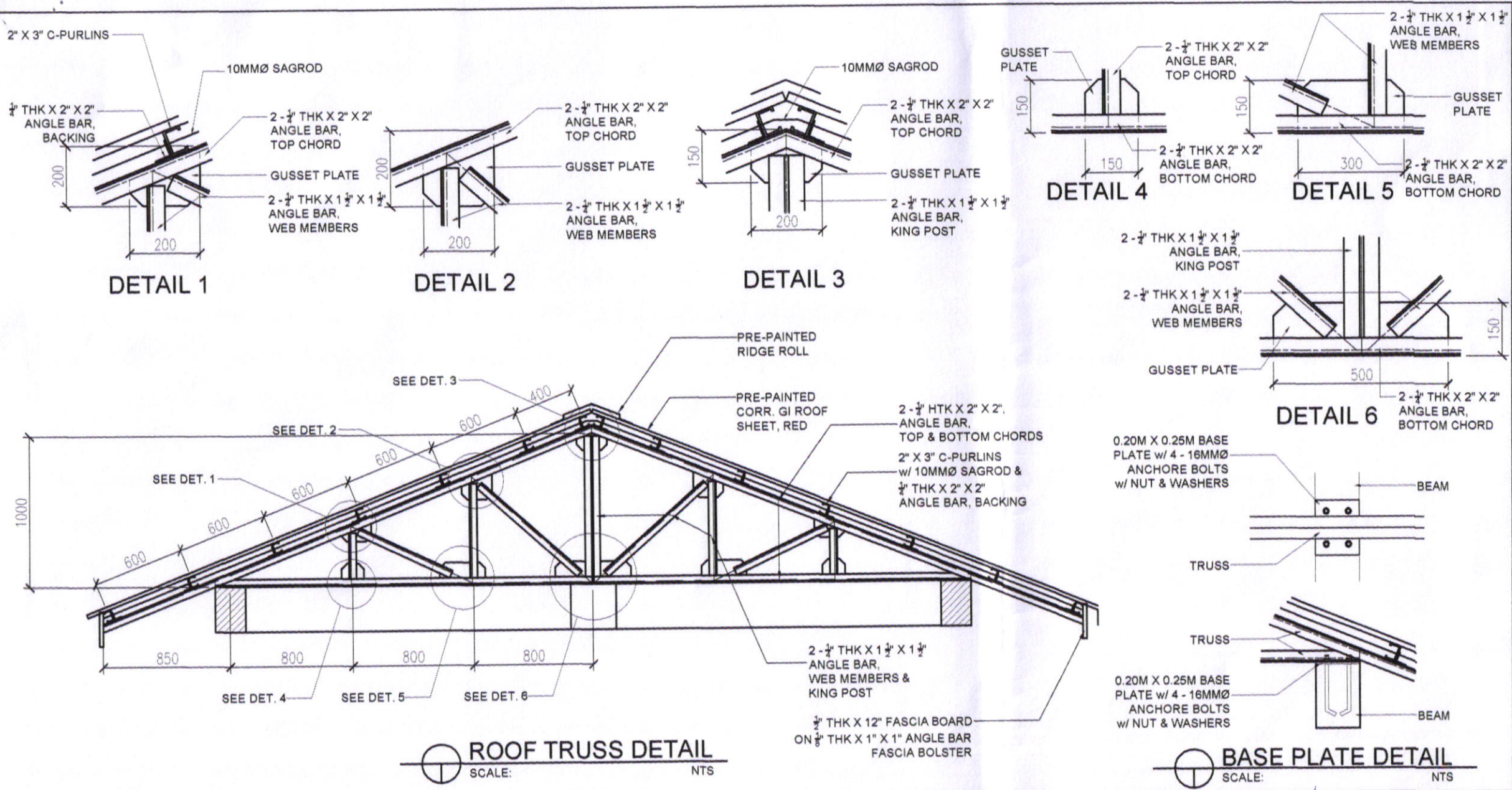
CONSTRUCTION OF MULTI PURPOSE BUILDING



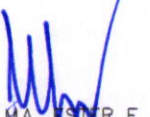
LOCATION: BUENAVISTA BACON DISTRICT SORSOGON CITY

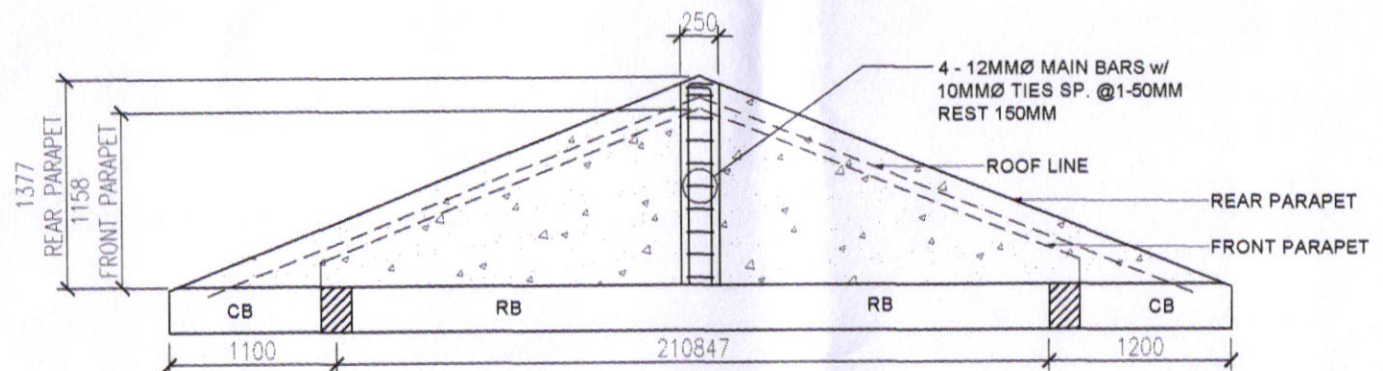
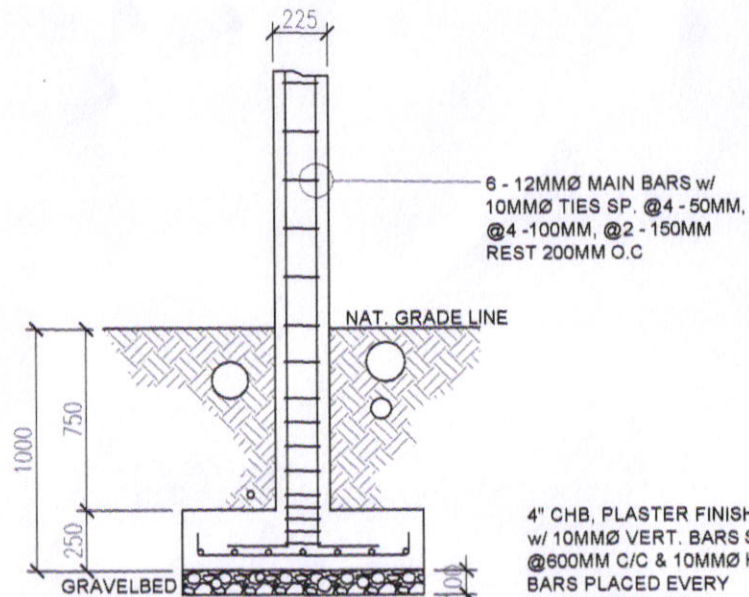
ROY M. HUBILLA
ENGINEERING AIDE

ROEL D. DOMER, CE/RMP
CITY ENGINEER

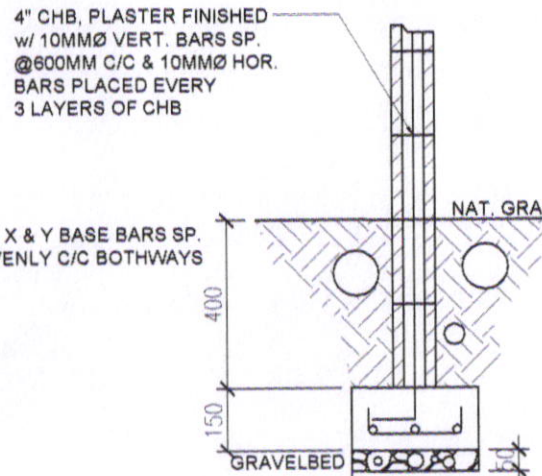
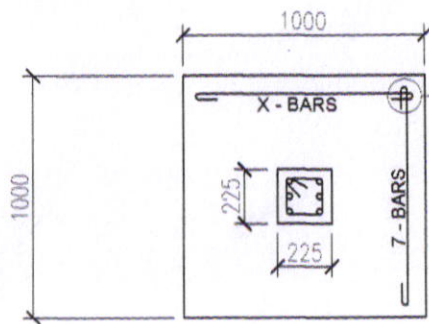
HON. MAESTER E. HAMOR
CITY MAYOR



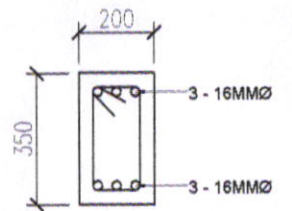
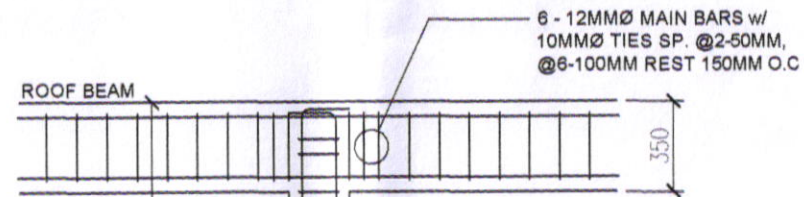
PREPARED FROM:	PROJECT TITLE:	DRAWN:	RECOMMENDED BY:	APPROVED BY:	SHEET NO.
 SORSOGON CITY CITY ENGINEER'S OFFICE	CONSTRUCTION OF MULTI PURPOSE BUILDING	ROY M. HUBILLA ENGINEERING AIDE	 ROEL D. DOMER, CE/RMP OIC-CITY ENGINEER	 HON. MA. ESTER E. HAMOR CITY MAYOR	
	LOCATION: BUENAVISTA BACON DISTRICT SORSOGON CITY				



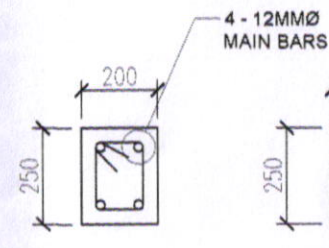
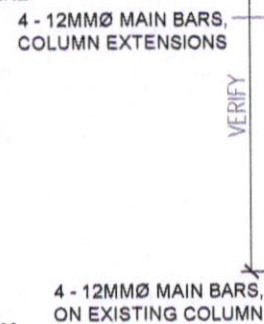
PARAPET & STIFFENER DETAIL
SCALE: NTS



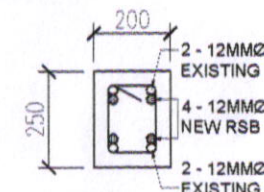
CHB FOOTING DETAIL
SCALE: NTS



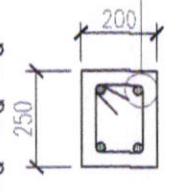
BEAM SECTION



**EXISTING
COLUMN**



@SPLICE



@BEAM

**COLUMN 1 (C1) EXTENSION
& BEAM DETAILS**
SCALE: NTS

COLUMN 2 FOOTING 1 (C2F1)
SCALE: NTS

PREPARED FROM:

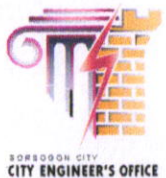
PROJECT TITLE:

DRAWN:

RECOMMENDED BY:

APPROVED BY:

SHEET NO.



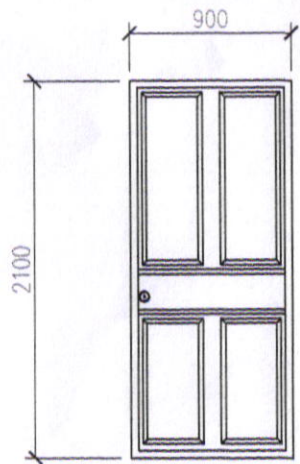
CONSTRUCTION OF MULTI PURPOSE BUILDING

LOCATION: BUENAVISTA BACON DISTRICT SORSOGON CITY

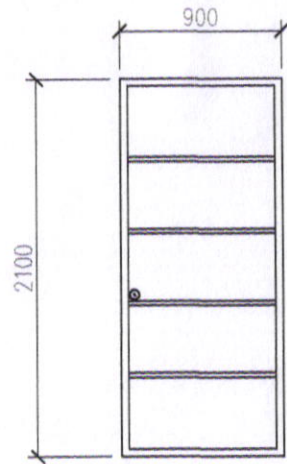
ROY M. HUBILLA
ENGINEERING AIDE

ROEL D. DOMER, CE/RMP
CITY ENGINEER

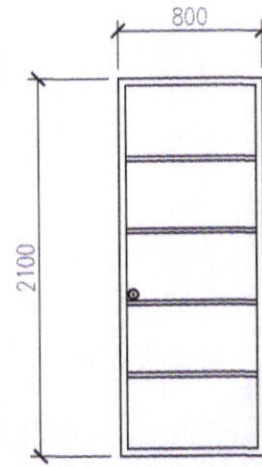
HON. MA. ESTER E. HAMOR
CITY MAYOR



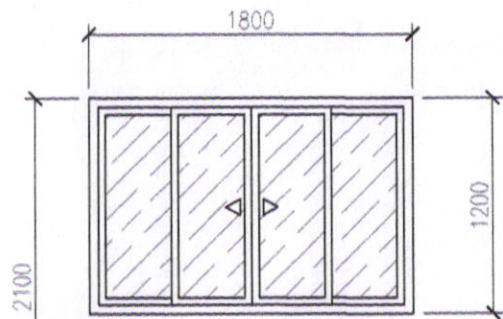
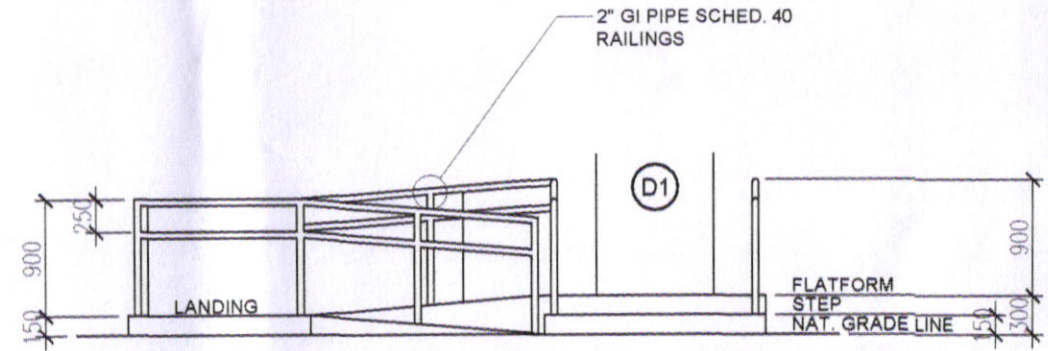
D1 WOOD PANEL DOOR
2 SETS



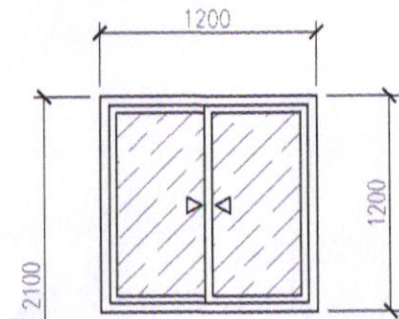
D2 FLUSH DOOR TYPE
1 SET



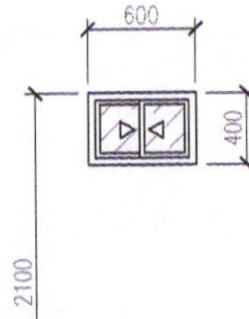
D3 FLUSH DOOR TYPE
1 SET1



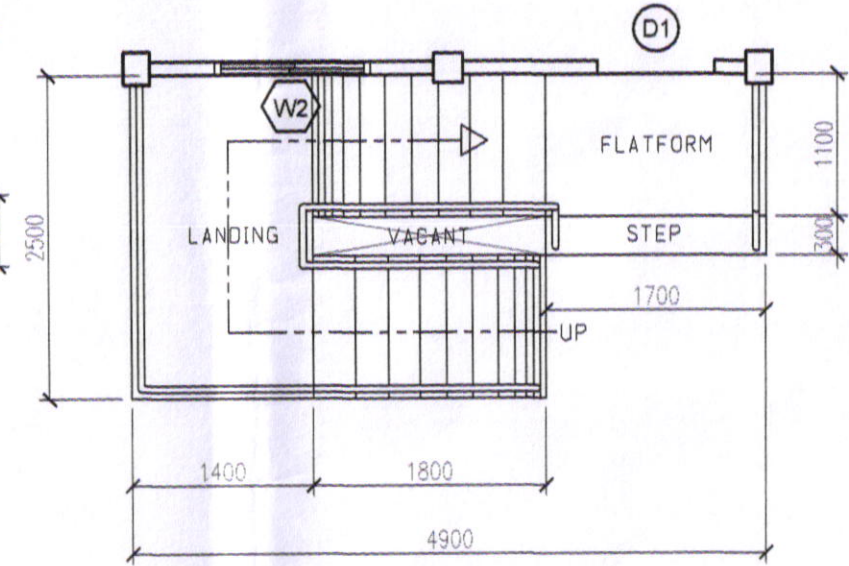
W1 ALUM. FRAMED SLIDING WINDOW
2 SETS



W2 ALUM. FRAMED SLIDING WINDOW
1 SET




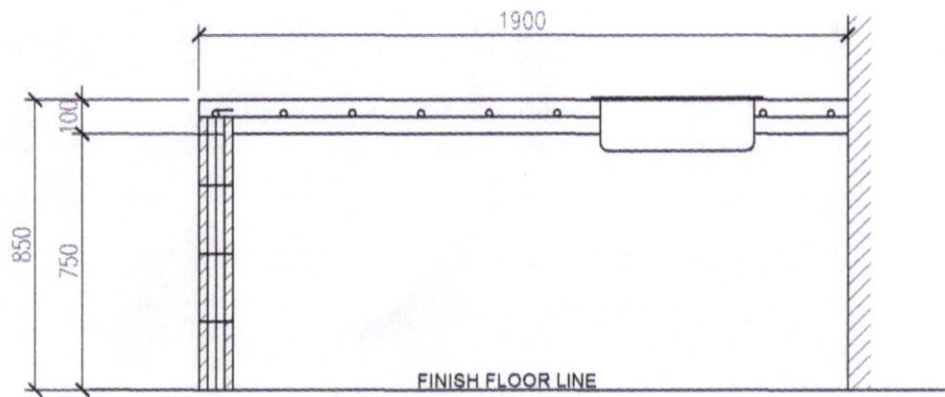
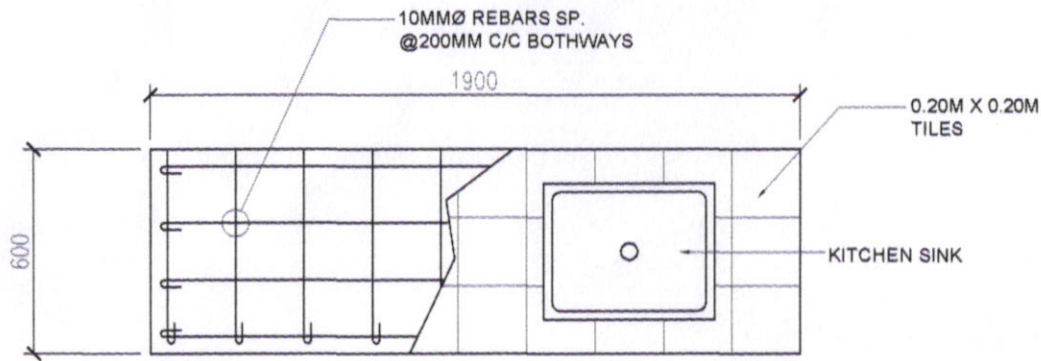
W3 ALUM. FRAMED SLIDING WINDOW
1 SET



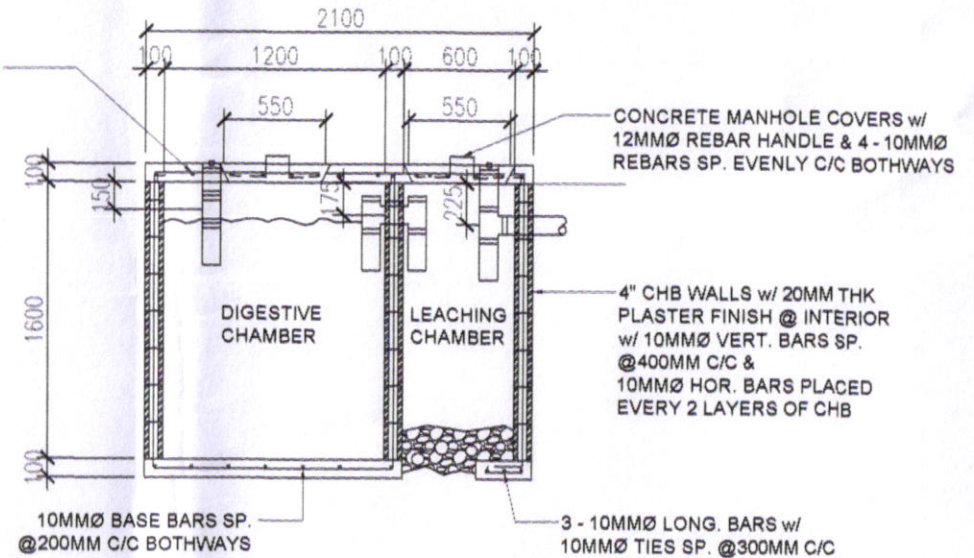
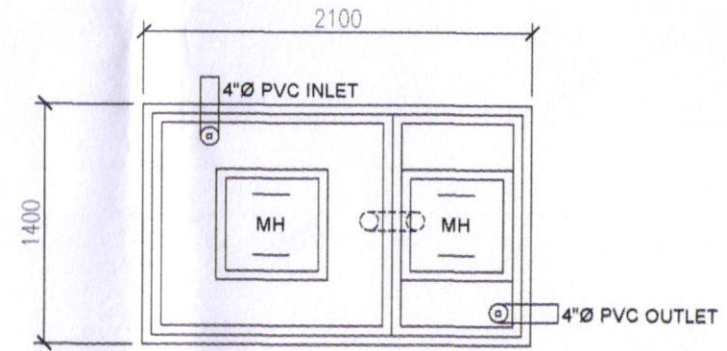
PWD RAMP DETAIL
SCALE: NTS


DOORS & WINDOWS SCHEDULE
SCALE: NTS


PREPARED FROM:	PROJECT TITLE:	DRAWN:	RECOMMENDED BY:	APPROVED BY:	SHEET NO.
 SORSOGON CITY CITY ENGINEER'S OFFICE	CONSTRUCTION OF MULTI PURPOSE BUILDING				
	LOCATION: BUENAVISTA BACON DISTRICT SORSOGON CITY	ROY M. HUBILLA ENGINEERING AIDE	ROEL D. DOMER, CE/RMP CITY ENGINEER	HON. MA. ESTER E. HAMOR CITY MAYOR	



SEPTIC TANK CONCRETE COVER w/ 10MMØ REBARS SP. @200MM C/C BOTHWAYS



 **KITCHEN COUNTER**
SCALE: NTS

 **SEPTIC TANK DETAIL**
SCALE: NTS

PREPARED FROM:

PROJECT TITLE:

DRAWN:

RECOMMENDED BY:

APPROVED BY:

SHEET NO.

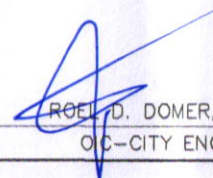


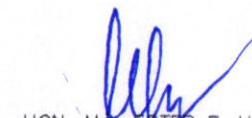
SORSOGON CITY
CITY ENGINEER'S OFFICE

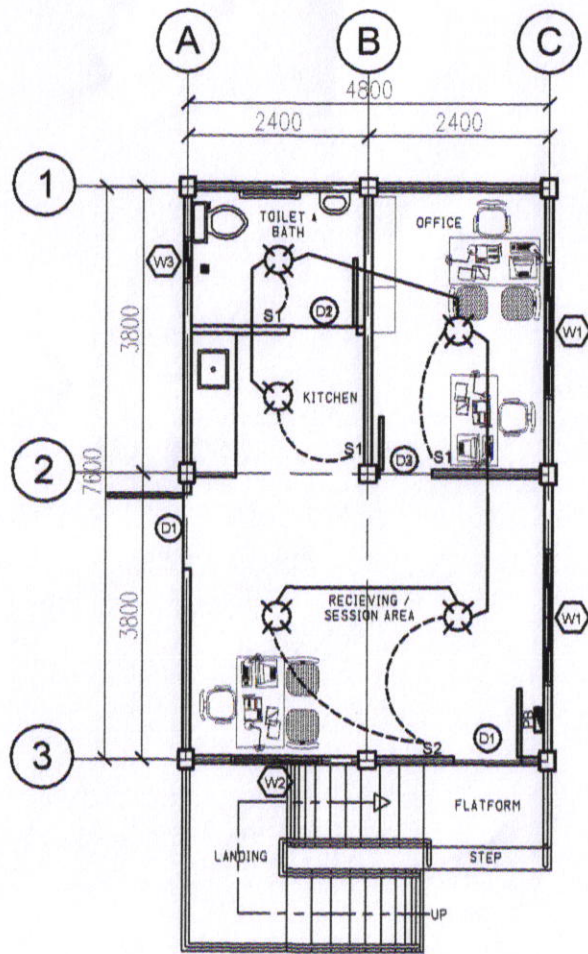
CONSTRUCTION OF MULTI PURPOSE BUILDING

LOCATION: BUENAVISTA BACON DISTRICT SORSOGON CITY

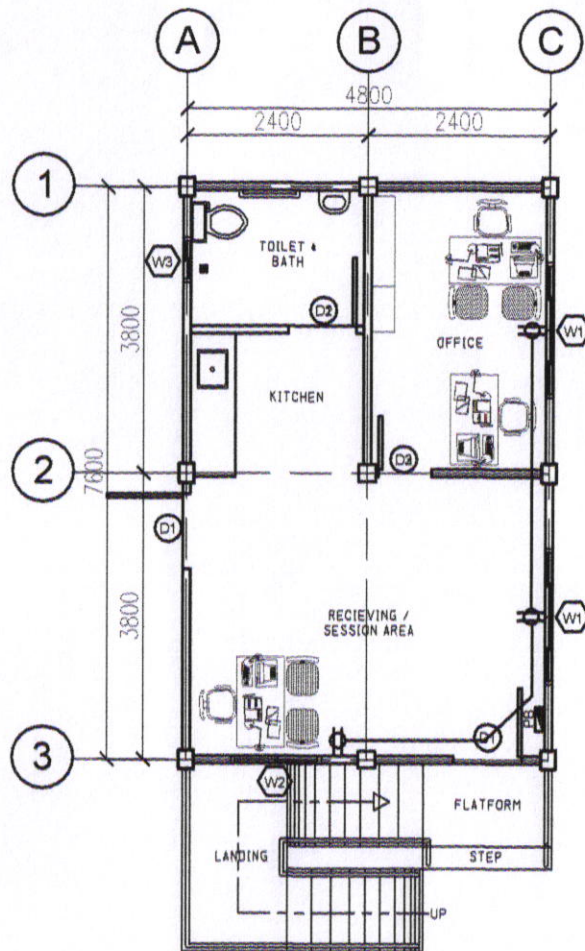
ROY M. HUBILLA
ENGINEERING AIDE


ROEL D. DOMER, CE/RMP
O/C-CITY ENGINEER

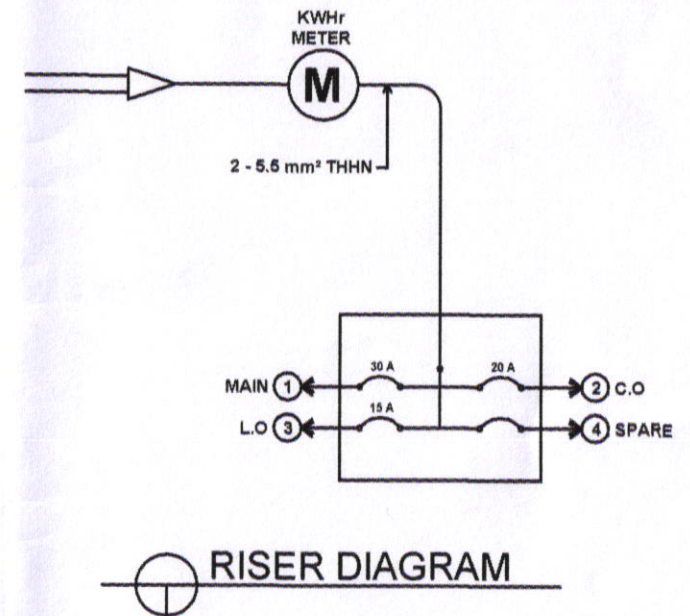

HON. MA. ESTER E. HAMOR
CITY MAYOR



LIGHTING LAY-OUT
SCALE: NTS



POWER LAY-OUT
SCALE: NTS



RISER DIAGRAM

PREPARED FROM:

PROJECT TITLE:

DRAWN:

RECOMMENDED BY:

APPROVED BY:

SHEET NO.



SORSOGON CITY
CITY ENGINEER'S OFFICE

CONSTRUCTION OF MULTI PURPOSE BUILDING

LOCATION: BUENAVISTA BACON DISTRICT SORSOGON CITY

ROY M. HUBILLA
ENGINEERING AIDE

ROEL D. DOMER, CE/RMP
OIC - CITY ENGINEER

HON. MA. ESTER E. HAMOR
CITY MAYOR