



# LOCAL DISASTER RISK REDUCTION AND MANAGEMENT PLAN (2020 – 2022)

## I. INTRODUCTION

### Background of the City DRRM Plan

Years ago, people believe that calamities happen as it was meant to happen and that these are acts of the Higher Almighty. As such, human preparation is unnecessary. The belief that no amount of preparation can curb its impact to the people became a culture of most folks in the provinces.

Although disaster preparedness was unheard of, most local folks have developed their own way of detecting the onset of natural calamities by merely observing natural phenomenon such as wind intensity and wave direction for typhoons and behavior of animals for volcanic eruption. These are indigenous skills of early warning system.

Oftentimes, the communities are left to decide on their own what appropriate measure to do to mitigate the impact of natural calamities. This was because local government units have no established system and plan for implementation whenever disasters hit their areas of jurisdiction.

Throughout the years, the people have learned to accept the aftermath of natural calamities expecting the local government units to immediately extend relief goods and conduct search and rescue operations. Previous experiences focused only on this kind of initiative because of policy limitation. The calamity fund then was focused only on response, yet still very limited.

But with the evolution of “mega-disasters”, global leaders and scientists have come to realize the need to shift people’s mindset from being passive onlookers to active participants, from reactive relief and rehabilitation to proactive pre-disaster programs.

Thus, the world community formulated the Hyogo Framework for Action (HFA), which is part of the global strategy to reduce disaster risk. This was adopted by 168 governments worldwide including the Philippines.

The HFA became the basis of Republic Act 10121, otherwise known as the Philippine Disaster Risk Reduction and Management Act of 2010. The law provides for the formulation of the National Disaster Risk Reduction and Management Plan (NDRRMP) consistent with the National Disaster Risk Reduction and Management Framework (NDRRMF).

The NDRRMP has become the basis in the preparation of Local Disaster Risk Reduction and Management Plans (LDRRMP) validated and accustomed to the local needs for prevention and mitigation, preparedness, response, rehabilitation and recovery.

II. CITY PROFILE

Brief History

Although relatively young, the city boasts of a colorful history that goes back to the pre-Hispanic times, when Moro pirates frequently trespassed its territorial waters. With the coming of the Spanish colonizers in the 1600s, Bacon was organized into a *visita* of the town of Casiguran, one of the oldest settlements in Luzon. The municipality of Sorsogon, whose original Site was in Sitio Pocdol in Capuy, was in turn, a *visita* of Bacon. As its population increased, however, Sorsogon was declared an independent, full-fledged parish in 1628.

The Pueblo Civil de Bacon was established in 1754, with Juan Elias as its first *gobernadorcillo*. Sorsogon on the other hand, became an independent political unit in 1864.

From their organization as *visitas* and eventually as independent *pueblos*, both Bacon and Sorsogon remained under the territorial jurisdiction of the province of Albay. On October 17, 1894, the Spanish authorities organized a geographical unit independent from Albay, with the town of Sorsogon as its seat of government. The new province adopted the name of the town and has since been known as the Province of Sorsogon.

Sorsogon City was created by virtue of Republic Act 8806, which was signed into law on August 16, 2000 and ratified during a plebiscite on December 16, 2000. RA 8806, also known as the Cityhood Law, called for the merger of the municipalities of Sorsogon and Bacon into a component city of the province of Sorsogon

Before the merger to form the City of Sorsogon, Bacon and Sorsogon enjoyed different economic classifications, with Sorsogon classified as first-class municipality and Bacon, fourth class. The merger has resulted in a political unit composed of 64 barangays falling into three districts: Bacon (with 28 barangays), Sorsogon West (with 22 barangays) and Sorsogon East (with 14 barangays).

Climate

The climate of Sorsogon is Type II under the Coronas classification system. There is no pronounced dry season but with a very pronounced maximum rain period from November to January. Rains start late September or early October. Annual rainfall ranges from 2,800 mm to 3,500 mm. Rain is expected 200 days in a year and even in the driest months unexpected downpour occurs.

Temperature ranges from 21 °C to 32 °C. Relative humidity is 82 percent. Prevailing winds are the monsoons and Pacific Trade Winds. The Northeast Monsoon (Amihan) occurs from October to March while the Southwest Monsoon (Habagat) occurs from June to September. The Pacific Trade Winds (Gurang na Habagat) occurs during April and May. Wind speed ranges from 7 to 12 kph.

Demography

The City has a total population of 155, 144 based on the 2010 national census of population. It is considered as the largest city in Bicol Region in terms of land area and one of the region's leading cities in terms of urbanization as it is one of the most populous cities in the region.

The annual growth rate is 1.42% for the period of 2000-2010. The total number of household is 32,629 with a population density of 497.25 persons per square kilometer.

Population Projection by Barangay (By Urban/Rural)

Barangay		Base Year	Projected Population						
		(2007)	2011	2012	2013	2014	2015	2016	2020
Urban									
1	Almendras/Cogon	1,263	1,263	1,284	1,306	1,328	1,350	1,468	1,468
2	Balogo (E)	5,615	5,615	5,710	5,806	5,905	6,004	6,529	6,529
3	Bibincahan	16,239	16,239	16,513	16,792	17,076	17,365	18,883	18,883
4	Bitan-o/ Dalipay	3,238	3,238	3,293	3,348	3,405	3,462	3,765	3,765
5	Burabod	2,349	2,349	2,389	2,429	2,470	2,512	2,732	2,732
6	Cabid-an	5,802	5,802	5,900	6,000	6,101	6,204	6,747	6,747
7	Macabog	3,259	3,259	3,314	3,370	3,427	3,485	3,790	3,790
8	Pangpang	8,360	8,360	8,501	8,645	8,791	8,940	9,721	9,721
9	Piot	2,750	2,750	2,797	2,844	2,892	2,941	3,198	3,198
10	Poblacion	5,220	5,220	5,309	5,398	5,490	5,582	6,070	6,070
11	Polvorista	725	725	737	750	762	775	843	843
12	Salog	2,765	2,765	2,812	2,860	2,908	2,957	3,215	3,215
13	Sampaloc	5,576	5,576	5,670	5,766	5,863	5,962	6,483	6,483
14	San Juan (E)	4,581	4,581	4,658	4,737	4,817	4,899	5,327	5,327
15	Sirangan	2,664	2,664	2,709	2,755	2,801	2,848	3,097	3,097
16	Sulucan	627	627	637	648	659	670	729	729
17	Talisay	2,844	2,844	2,892	2,941	2,991	3,042	3,307	3,307
18	Tugos	2,729	2,729	2,775	2,822	2,870	2,918	3,173	3,173
Sub Total		76,607	76,607	77,902	79,218	80,557	81,918	89,078	89,078
Rural									
1	Abuyog	4,149	4,149	4,219	4,290	4,363	4,437	4,824	4,824
2	Balete	2,713	2,713	2,759	2,805	2,853	2,901	3,155	3,155
3	Balogo (B)	480	480	488	496	505	513	558	558
4	Barayong	910	910	925	941	957	973	1,058	1,058
5	Basud	2,598	2,598	2,642	2,687	2,732	2,779	3,022	3,022
6	Bato	1,728	1,728	1,757	1,787	1,817	1,848	2,009	2,009
7	Bogña	1,413	1,413	1,436	1,461	1,485	1,511	1,643	1,643
8	Bon-Ot	616	616	626	637	648	659	716	716
9	Bucalbucalan	2,472	2,472	2,514	2,557	2,600	2,644	2,875	2,875
10	Buenavista (B)	1,368	1,368	1,391	1,414	1,438	1,463	1,590	1,590
11	Buenavista (W)	1,556	1,556	1,582	1,609	1,636	1,664	1,809	1,809
12	Buhatan	3,056	3,056	3,108	3,160	3,214	3,268	3,554	3,554
13	Bulabog	2,314	2,314	2,353	2,393	2,433	2,474	2,691	2,691
14	Cabarbuhan	811	811	824	838	852	867	943	943
15	Cambulaga	4,381	4,381	4,455	4,530	4,607	4,685	5,094	5,094
16	Capuy	2,651	2,651	2,696	2,741	2,788	2,835	3,082	3,082
17	Caricaran	1,690	1,690	1,718	1,747	1,777	1,807	1,965	1,965
18	Del Rosario	966	966	982	999	1,015	1,033	1,123	1,123
19	Gatbo	2,543	2,543	2,586	2,630	2,674	2,719	2,957	2,957
20	Gimaloto	970	970	986	1,003	1,020	1,037	1,128	1,128
21	Guinlajon	4,462	4,462	4,538	4,614	4,692	4,772	5,189	5,189
22	Jamislagan	566	566	575	585	595	605	658	658
23	Marinas	627	627	637	648	659	670	729	729
24	Osiao	2,910	2,910	2,959	3,009	3,060	3,111	3,383	3,383
25	Pamurayan	2,009	2,009	2,043	2,078	2,113	2,149	2,336	2,336



26	Panlayaan	1,495	1,495	1,520	1,546	1,572	1,599	1,738	1,738
27	Peñafrancia	1,610	1,610	1,638	1,665	1,693	1,722	1,873	1,873
28	Rawis	1,275	1,275	1,296	1,318	1,340	1,363	1,482	1,482
29	Rizal	3,313	3,313	3,369	3,426	3,484	3,542	3,852	3,852
30	Salvacion (B)	1,165	1,165	1,184	1,204	1,225	1,245	1,354	1,354
31	Salvacion (Sw)	766	766	779	792	805	819	890	890
32	San Isidro	1,397	1,397	1,420	1,444	1,469	1,493	1,624	1,624
33	San Isidro (B)	2,939	2,939	2,988	3,039	3,090	3,142	3,417	3,417
34	San Jose	1,353	1,353	1,376	1,399	1,422	1,446	1,573	1,573
35	San Juan (B)	1,949	1,949	1,982	2,016	2,050	2,085	2,267	2,267
36	San Pascual	1,580	1,580	1,607	1,634	1,662	1,690	1,838	1,838
37	San Ramon	1,030	1,030	1,047	1,065	1,083	1,101	1,197	1,197
38	San Roque	3,233	3,233	3,287	3,343	3,399	3,457	3,759	3,759
39	San Vicente	1,353	1,353	1,376	1,399	1,422	1,446	1,573	1,573
40	Sawanga	1,599	1,599	1,626	1,653	1,681	1,709	1,859	1,859
41	Sta. Cruz	1,210	1,210	1,231	1,252	1,273	1,294	1,408	1,408
42	Sta. Lucia	442	442	449	457	464	472	514	514
43	Sto. Domingo	1,425	1,425	1,450	1,474	1,499	1,524	1,657	1,657
44	Sto. Niño	2,147	2,147	2,184	2,220	2,258	2,296	2,497	2,497
45	Sugod	2,052	2,052	2,087	2,122	2,158	2,194	2,386	2,386
46	Ticol	2,060	2,060	2,094	2,130	2,166	2,202	2,395	2,395
Sub Total		85,348	85,348	86,790	88,257	89,748	91,265	99,242	99,242
TOTAL		161,955	161,955	164,692	167,475	170,305	173,184	188,321	188,321

Source: CPDO

Location

Sorsogon City lies from 123° 53’ to 124° 09’ east longitude and from 12° 55’ to 13° 08’ north latitude, and is situated in the Philippines’ Bicol Region. It is 600 kilometers southeast of Manila and is located at the southernmost tip of Luzon. As part of the geographical chain linking Luzon to the rest of the Philippines, it is a transshipment corridor and serves as the gateway to the Visayas and Mindanao Islands. Its geographical location is such that it opens into the Pacific Ocean to the West and East, through Albay Gulf and Sugod Bay and the China Sea through the Sorsogon Bay.

The city is bounded on the east by the municipalities of Prieto Diaz and Gubat, on the south by the municipality of Casiguran and Sorsogon Bay, on the west by the municipality of Castilla, on the northeast by the municipality of Manito in Albay, and on the north by Albay Gulf. It covers 31,292 hectares and is composed of 64 barangays.

Topography

Sorsogon is divided into four physical areas – the northeastern range, the sloping uplands, the plain area, and marshlands. The northeastern range is part of the Bacon-Castilla range, bordering Sorsogon’s north and serves as its watershed covered mainly by secondary forest growth and thicket. It starts from 200 m above sea level to Mt. Rangas, the highest point at 1,000 meters. The sloping uplands are the shoulders of the range and the series of hills in the southeast. Coconut, abaca, and fruit trees cover this area. The plain is generally low and level. Settlements and other built-up areas and rice fields occupy the plain area. Marshlands are the mouth of rivers vegetated mainly by nipa and are developed into fishponds.

### **Surface Drainage**

A system of rivers and creeks and several small waterways drain the general area of the city: Salog River is an urban river originating from Mt. Alinao and traversing eight barangays before discharging into the Sorsogon Bay. San Isidro, Rizal, and Cawayan Rivers originate from springs and tributaries of secondary forest areas within EDC Geothermal Reservation.

Rivers in Bacon District, at the northwestern to northeastern portion of the city, drain to the Albay Gulf. These include Luluwasan Osiao, Gatbo, and Rangas Rivers. Rivers in the southwest & south namely San Isidro, Cawayan, Salog, and Abuyog Rivers at the East & West District drain into the Sorsogon Bay.

Freshwater rivers, upon reaching the lowlands, are often tapped for irrigation and domestic uses. Brackish ones are source of shrimps and shellfish.

Water resources in the City are generally classified into surface and groundwater. Springs and networks of creeks and tributaries at the upland converge at the downstream to form major river systems. There are also creeks that only exist during rainy periods and dries up during dry season

### **Geology**

The northern part of Sorsogon is made up of andesitic lava flows and other volcanic rocks. Rocks in the northeast are coralline limestone which is now being quarried for marble produced by different episodes of volcanic intrusions.

The rest of the flatlands are recent alluvial deposits composed of clays, silt, sand, gravel, and corral.

Geothermal energy has been successfully exploited in the northern part of the city. From wells drilled and developed by the Philippine National Oil Corporation, the National Power Corporation is operating three plants with a capacity of 130 MW connected to the Luzon Grid. As to non-metallic minerals, the Bureau of Mines and Geosciences has determined a sulfur deposit of 755 metric tons in Rizal. Its grade ranges from 10 percent to 40 percent. Gravel and sand can be quarried at the Cawayan River.

### **Soil**

Dominant Soil types are Annam clay loam. Annam clay loam has a relief of slightly undulating, roughly rolling to undulating. It covers about half of the area. It is suited to lowland rice, root crops, vegetables, and permanent planting. Sorsogon clay loam is the soil on the plains and valleys. It is suited to lowland rice, abaca, and corn.

III. INSTITUTIONAL PROFILE

City DRRM Council (CDRRMC) Organizational Structure

As provided in RA 10121, the following are the composition of the City DRRM Council:

Chairperson	:	City Mayor
Vice-Chairperson – Disaster Prevention & Mitigation:		City Planning & Development Office (CPDO)
Vice-Chairperson – Disaster Preparedness	:	City Disaster Risk Reduction and Management Office (CDRRMO)
Vice-Chairperson – Disaster Response	:	City Social Welfare and Development Office (CSWDO)
Vice-Chairperson – Disaster Rehabilitation & Recovery:		City Engineers Office (CEO)

- Members:
- City Health Office (CHO)
  - City Agricultural Services Office (CASO)
  - City Environment & Natural Resources Office (CENRO)
  - City Veterinary Office (CVO)
  - City General Services Office (CGSO)
  - City Budget Office (CBO)
  - City Treasurer’s Office (CTO)
  - City Accounting Office (CAcctngO)
  - City Administrator’s Office (CAdminO)
  - The City Federation President of the Liga ng mga Barangay
  - Gender and Development (GAD) Office
  - Department of Education (DepEd) City Schools Division Superintendent
  - The Highest Ranking Official of the Armed Forces of the Philippines in the area
  - The City Director of the Philippine National Police (PNP)
  - The City Fire Marshal of the Bureau of Fire Protection (BFP)
  - Philippine Coast Guard (PCG) – Sorsogon City
  - The Philippine Red Cross (PRC) – Sorsogon City Chapter
  - Department of Interior and Local Government
  - National Food Authority
  - Sorsogon II Electric Cooperative (SORECO II)
  - Sorsogon City Water District (SCWD)
  - Filipino-Chinese Fire Volunteer Brigade
  - Kapisanan ng mga Broadcaster Ng Pilipinas (KBP)
  - Representatives of four (4) accredited Civil Society Organizations (CSO)
    - a. Coastal CORE Inc.
    - b. Sorsogon Social Action Foundation Inc.
    - c. Bicol Emergency Response Network (BERN)
    - d. KABALIKAT Civicom
  - Private Sector Representative – Philippine Chamber of Commerce and Industries (PCCI)-Sorsogon Chapter

### Tasks of the City DRRM Council

The Council has the following functions:

1. Approve, monitor and evaluate the implementation of the City Disaster Risk Reduction and Management Plan and regularly review and test the plan consistent with other national and local planning programs;
2. Ensure the integration of disaster risk reduction and climate change adaptation (DRR-CCA) into local development plans, programs and budgets as a strategy in sustainable development and poverty reduction;
3. Recommend the implementation of forced or preemptive evacuation of local residents, if necessary; and
4. Convene the Council once every three (3) months/quarter or as necessary.

### The City DRRM Council Thematic Committees

The City DRRM Council has subdivided its members following the four (4) thematic areas covered by the NDRRMP:

1. Thematic Area 1: Disaster Prevention and Mitigation Committee - avoid hazards and mitigate their potential impacts by reducing vulnerabilities and exposure and enhancing capacities of communities.

Vice-Chairperson/Lead Agency: **City Planning and Development Office**

Asst: City Disaster Risk Reduction Management Office

Sub-committee; Pre and Post Disaster Damage and Needs Assessment (PDANA)

Members:

1. City Agricultural Services Office
2. City Environment and Natural Resources Office
3. City Engineering Office
4. City Social Welfare Development Office
5. City Veterinary Office
6. City Health Office
7. Sorsogon City Water District
8. SORECO II

2. Thematic Area 2: Disaster Preparedness Committee - establish and strengthen capacities of communities to anticipate, cope and recover from the negative impacts of emergency occurrences and disasters.

Vice Chairperson/Lead Agency: **City Disaster Risk Reduction & Management Office**

Asst: DILG-City Local Government Operation Office

Sub-Committee: Public Information and Coordination



Members:

1. Kapisanan ng mga Broadcaster ng Pilipinas
  2. KABALIKAT Civicom
  3. Coastal Core Inc.,
  4. The City Federation President of the Liga ng mga Barangay
3. Thematic Area 3: Disaster Response - provide life preservation and meet the basic subsistence needs of affected population based on acceptable standards during or immediately after a disaster.

Vice Chairperson/Over-all Lead Agency: **City Social Welfare Development Office**

Assist: City Disaster Risk Reduction Management Office

Sub-committees:

- a. Security and Protection  
Lead Office/Agency: **Philippine National Police**

Members:

1. Philippine Armed Forces of the Philippines
2. Philippine Coast Guard
4. Liga ng mga Barangay

- b. Health Emergency Medical Services (HEMS)  
Lead Office/Agency: **City Health Office**

Members:

1. Philippine Red Cross-Emergency Medical Services
2. Bureau of Fire Protection – Emergency Medical Services
3. Sorsogon City Emergency Response Team
4. Bicol Emergency Response Network

- c. Fire Suppression/Water Rationing  
Lead Office/Agency: **Bureau of Fire Protection**

Members:

1. Filipino-Chinese Fire Volunteers Brigade
2. Sorsogon City Water District

- d. Transportation and Evacuation  
Lead Office/Agency: **Department of Education**  
Assist: City Social Welfare Development Office, City General Services Office, City Engineers Office

Members:

1. City General Services Office
2. City Engineers Office
3. Gender and Development Unit
4. Liga ng Mga Barangay

- e. Relief Operation
- Lead Office/Agency: **City Social Welfare Development Office**
- Assist: City General Services Office

- Members:
1. National Food Authority

2. Philippine Red Cross

3. City Treasurers Office

4. City Budget Office

5. City Accounting Office

6. City Administrator’s Office

7. Philippine Chamber of Commerce Inc.

8. Sorsogon Social Action Foundation Inc.

4. Thematic Area 4: Disaster Rehabilitation and Recovery - restore and improve facilities, livelihood and living conditions and organizational capacities of affected communities, and reduce disaster risks in accordance with the “building back better” principle.

Vice-Chairperson/Lead Agency: **City Engineering Office**

Assist: City Disaster Risk Reduction Management Office

- Members:
1. City Environment and Natural Resource Office

2. City Agricultural Services Office

3. City Veterinary Office

4. City Health Office

5. City Treasurers Office

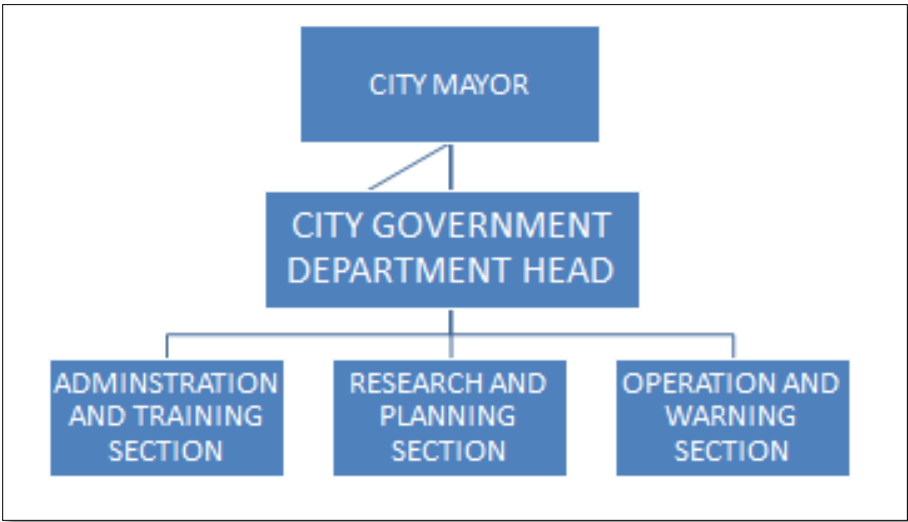
6. City Budget Office

7. Sorsogon II Electric Cooperative

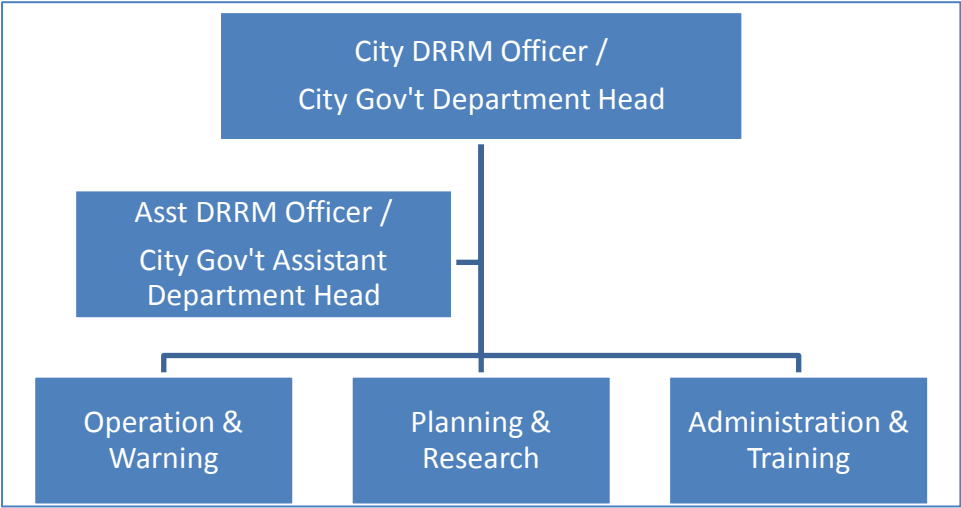
8. Sorsogon City Water District

**City DRRM Office (CDRRMO) Organizational Structure**

Pursuant to Section 12 of the Act, the City Government of Sorsogon, thru City Ordinance No. 007, Series of 2011, created the City Disaster Risk Reduction and Management Office (CDRRMO) with the following organizational structure:



The City Council enacted Resolution No. 174, Series of 2017, entitled a “Resolution Enacting an Ordinance Amending Sections 3 & 4 of City Ordinance No. 003, Series of 2013 (An Ordinance Creating Personnel Plantilla Positions in the Local Disaster Risk Reduction and Management Office and thereby Appropriating Funds for the purpose). Under City Ordinance No. 19, Series of 2017, the following is the new organizational structure and staffing pattern of the City DRRM Office:



Functions of the City DRRM Office

Section 12 (c) of the Act states the following functions of the City DRRM Office:

- (1) Design, program, and coordinate disaster risk reduction and management activities consistent with the National Council's standards and guidelines;
- (2) Facilitate and support risk assessments and contingency planning activities at the local level;
- (3) Consolidate local disaster risk information which includes natural hazards, vulnerabilities, and climate change risks, and maintain a local risk map;
- (4) Organize and conduct training, orientation, and knowledge management activities on disaster risk reduction and management at the local level;
- (5) Operate a multi-hazard early warning system, linked to disaster risk reduction to provide accurate and timely advice to national or local emergency response organizations and to the general public, through diverse mass media, particularly radio, landline communications, and technologies for communication within rural communities;
- (6) Formulate and implement a comprehensive and - integrated LDRRMP in accordance with the national, regional and provincial framework, and policies on disaster risk reduction in close coordination with the local development councils (LDCs);
- (7) Prepare and submit to the local sanggunian through the LDRRMC and the LDC the annual LDRRMO Plan and budget, the proposed programming of the LDRRMF, other dedicated

disaster risk reduction and management resources, and other regular funding *source/s* and budgetary support of the *LDRRMO/BDRRMC*;

- (8) Conduct continuous disaster monitoring and mobilize instrumentalities and entities of the LGUs, CSOs, private groups and organized volunteers, to utilize their facilities and resources for the protection and preservation of life and properties during emergencies in accordance with existing policies and procedures;
- (9) Identify, assess and manage the hazards, vulnerabilities and risks that may occur in their locality;
- (10) Disseminate information and raise public awareness about those hazards, vulnerabilities and risks, their nature, effects, early warning signs and counter-measures;
- (11) Identify and implement cost-effective risk reduction measures/strategies;
- (12) Maintain a database of human resource, equipment, directories, and location of critical infrastructures and their capacities such as hospitals and evacuation centers;
- (13) Develop, strengthen and operationalize mechanisms for partnership or networking with the private sector, CSOs, and volunteer groups;
- (14) Take all necessary steps on a continuing basis to maintain, provide, or arrange the provision of, or to otherwise make available, suitably-trained and competent personnel for effective civil defense and disaster risk reduction and management in its area;
- (15) Organize, train, equip and supervise the local emergency response teams and the ACDVs, ensuring that humanitarian aid workers are equipped with basic skills to assist mothers to breastfeed;
- (16) Respond to and manage the adverse effects of emergencies and carry out recovery activities in the affected area, ensuring that there is an efficient mechanism for immediate delivery of food, shelter and medical supplies for women and children, endeavor to create a special place where internally-displaced mothers can find help with breastfeeding, feed and care for their babies and give support to each other;
- (17) Within its area, promote and raise public awareness of and compliance with this Act and legislative provisions relevant to the purpose of this Act;
- (18) Serve as the secretariat and executive arm of the LDRRMC;
- (19) Coordinate other disaster risk reduction and management activities;
- (20) Establish linkage/network with other LGUs for disaster risk reduction and emergency response purposes;
- (21) Recommend through the LDRRMC the enactment of local ordinances consistent with the requirements of this Act;
- (22) Implement policies, approved plans and programs of the LDRRMC consistent with the policies and guidelines laid down in this Act;

- (23) Establish a Provincial/ City/ Municipal/ Barangay Disaster Risk Reduction and Management Operations Center;
- (24) Prepare and submit, through the LDRRMC and the LDC, the report on the utilization of the LDRRMF and other dedicated disaster risk reduction and management resources to the local Commission on Audit (COA), copy furnished the regional director of the OCD and the Local Government Operations Officer of the DILG;



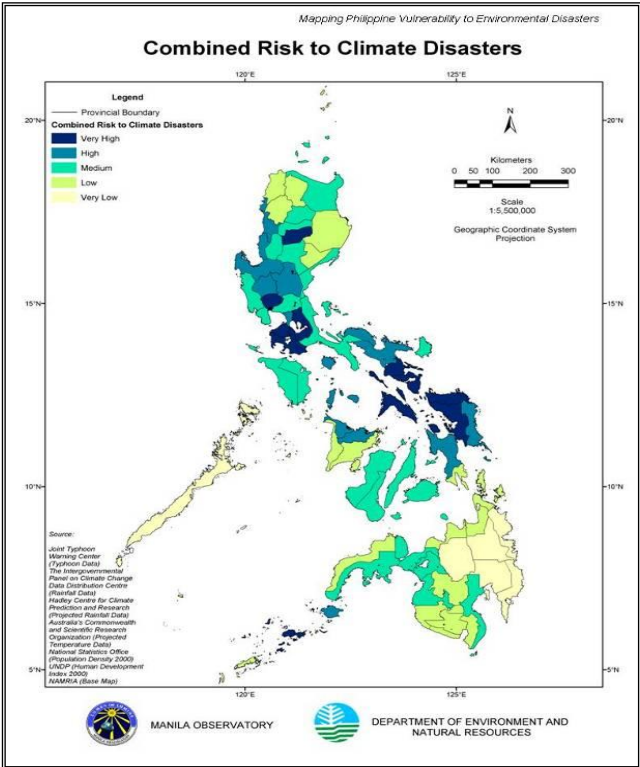
IV. CITY RISK PROFILE

Sorsogon City is very vulnerable to natural hazards/disasters. The physical setting in the tropics facing the Pacific Ocean on the north and Sorsogon Bay on the south and the Pacific Ring of Fire in the east makes it very susceptible to hydro-meteorological (tropical cyclones and its associated hazards and other severe weather disturbances) and geological hazards such as earthquake and their associated hazards.

Figure 1: Combined Risk to Natural Disasters

Sorsogon City is sandwiched between two (2) coastlines. Eighteen (18) barangays of Bacon District lie along the 33.5 kilometer long coastline that faces the Pacific Coast while six (6) barangays of the East District and eleven (11) barangays of the West District lie along the twenty-two (22) kilometer coastline facing Sorsogon Bay and the West Philippine Sea.

According to the a study conducted by the Manila Observatory and the Department of Environment and Natural Resource, the Province of Sorsogon where the City is located has been identified to be at a Very High Risk category relative to the Combined Risk to Climate Disasters (Figure 1).

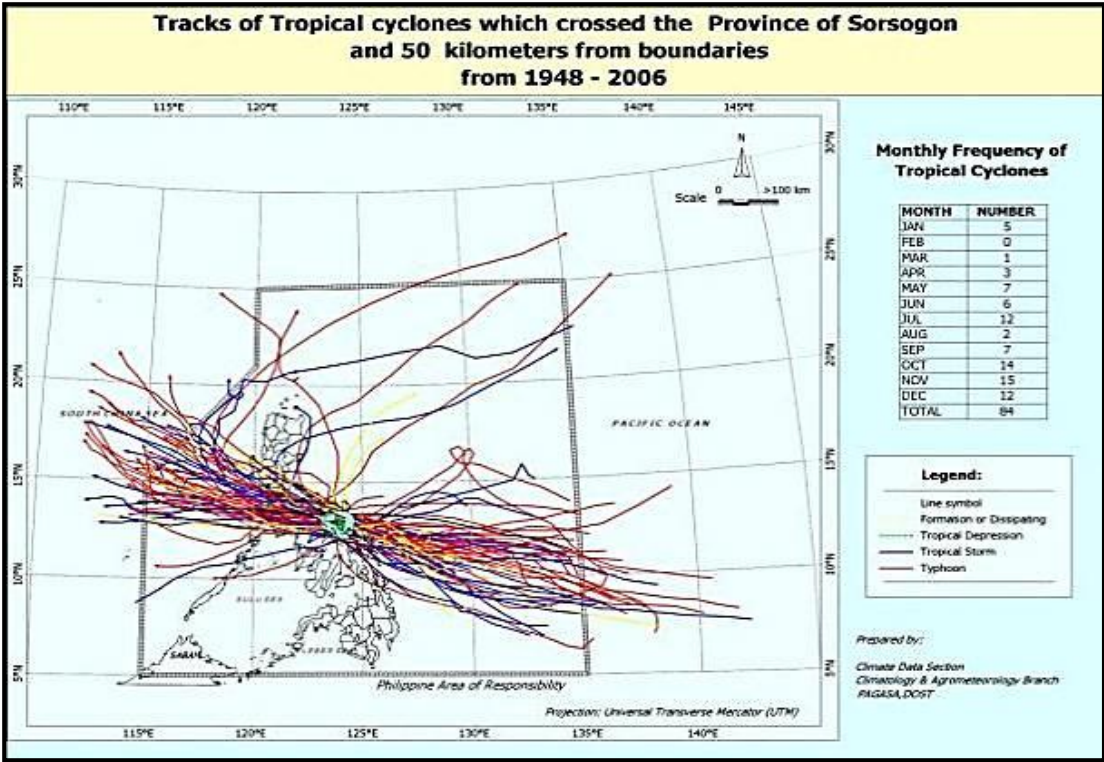


Hydrometeorologic Hazards

Typhoons/Tropical Cyclones

The Philippines in general is visited by an average of twenty (20) typhoons yearly. Sorsogon, based on national typologies, is regularly visited by at least three (3) direct hits from typhoons every two years. The map in Figure 2, shows that in the period of almost sixty (60) years we have been affected by two (2) typhoons on the average every year. The green line stands for tropical depressions, the blue line is for tropical storms, while the red line represents typhoons. For the same period, we were directly hit by thirty-three (33) typhoons. Most of the typhoons that directly hit the city were recorded during the last quarter of every year. These typhoons are stronger than the first to third quarter typhoons.

Figure 2: Tracks of Tropical Cyclones



Below is the list of recorded hydro-meteorological events that happened from 1987 to present (Table 1). Typhoons Milenyo, Reming and Glenda has been recorded as the typhoons with grave damage to Sorsogon City.

Table 1: Hydro-meteorological Events from 2006-present

Event Description	Impacts
TYPHOON SISANG 1987	No record
TYPHOON MILENYO September 27, 2006	21 Dead, 37 injured PDH – 51,768 ; TDH – 19,717 27,101 Affected Families Php 234 Million (est) Agri- Damage Php 208 Million (est) Infra- Damage
TYPHOON REMING November 29, 2006	6 Dead, 18 Injured, 3 Missing Evacuated 277 fam/1,602 pax PDH – 19,690 ; TDH – 4,812
TYPHOON MINA Nov. 23 – Dec. 14, 2007	Evacuated 24,766 pax PDH – 92 ; TDH – 13 Agriculture Damage – 4,819,417.96
HEAVY RAINFALL (Cold Front) February 27, 2008	Infra Damage – 20,635,350
TS ONDOY September 24-27, 2009	Agriculture Damage – 238,992
TYPHOON PEPING Sept. 30 – Oct. 3, 2009	Evacuated 1,085fam/5,157pax
TYPHOON MINA November 2007	2,582 families/15,594 persons affected

<b>TYPHOON DANTE</b> May 2009	Php200Million (est) Agri- and Infra- Damage
<b>TYPHOON BEBENG</b> May 2011	860 families affected Rizal: 7 families affected by landslide
<b>TYPHOON CHEDENG</b> May 2011	3846 families affected
<b>TYPHOON JUANING</b> July 2011	486 families affected
<b>TYPHOON PEDRING</b> September 2011	459 families affected
<b>TYPHOON GLENDIA</b> July 2014	8,352 Totally Damaged houses Php 394 Million (est) Agriculture Damage Php 380 Million (est) Infra-Damage
<b>TYPHOON RUBY</b> December 2014	1.1 Million (est) Agriculture Damage 1.2 Million (est) Infra-Damage
<b>TYPHOON AMANG</b> January 2015	14.4 Million (est) Infra-Damage 6.9 Million (est) Agriculture Damage
<b>TYPHOON CHEDENG</b> April 2015	2,900 passengers stranded
<b>TYPHOON DODONG</b> May 2015	1,993 passengers stranded
<b>TYPHOON NONA</b> May 2015	4.8Million (est) Infra-Damage 60 Million (est) Agriculture Damage 10,282 families evacuated
<b>TYPHOON NINA</b> December 22 – 27, 2016	7,362 families (39,177 persons) affected 63 buses (3063 passengers) stranded 1.5Million (est) Agriculture damage
<b>TROPICAL STORM URDUJA</b> December 15-16, 2017	43 buses (1357 passengers) stranded 112 trucks (263 passengers) stranded
<b>TROPICAL DEPRESSION USMAN</b> December 27, 2018 – January 2, 2019	33 flooded barangays 2 barangays with landslide incident with 6 casualty 23.5M (est) Infra – Damage 20.8M (est) Agriculture Damage 24,178 families (154,068 persons) affected
<b>TROPICAL DEPRESSION AMANG</b> January 19-22, 2019	30 families (150 persons) evacuated No damages
<b>Tail –end of cold Front</b> January 24, 2019	No damages
<b>TYPHOON TISOY</b> December 1-3, 2019	735.23M (est) Infra Damage 25M (est) Lifelines damage 104M (est) Agriculture damage 17,800 families (58,723 persons) affected
<b>TYPHOON URSULA</b> December 23 – 25, 2019	No damages
<b>TYPHOON AMBO</b> May 14-15,2020	31,372 families (122,078 persons) affected 3.7M (est) Agriculture damage

Flood

Vulnerability to flooding can be influenced either by intense rainfall and/or sea level rise. *Figure 3* cited the study conducted by Philippine Atmospheric, Geophysical and Astronomical Services Administration (PAGASA) PRECIS, the projected climate change scenarios for the Province of Sorsogon relative to rainfall for 2020 and 2050 using the A1B scenario of the IPCC. With the projected increase in rainfall, the City is continuously exposed to flooding events.

Figure 3: PAGASA projection

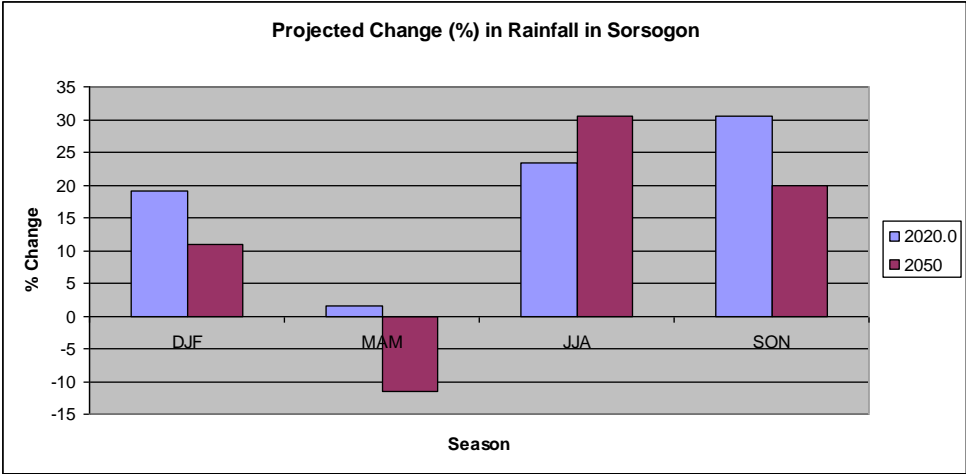
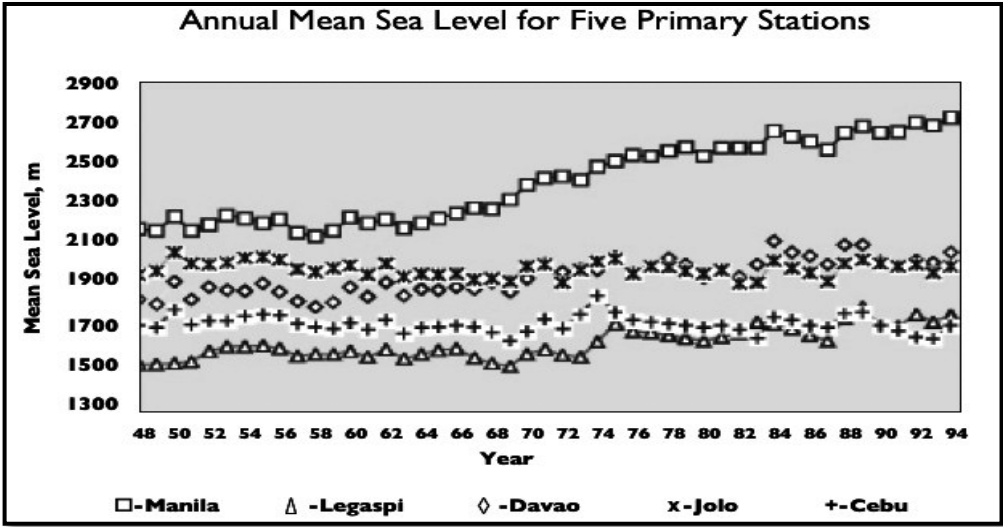


Figure 4 presents the sea level rise observations gathered by PINCCC in the five primary tidal gauge stations in the country including that in the Coast and Geodetic Survey Department (CGSD) of NAMRIA in Legaspi City, Albay. Given that Sorsogon City and Albay shares territory in Albay Gulf and faces the Pacific Ocean, sea level rise poses immense threat to almost all the barangays located in low-lying coastal areas, hence increasing the risk of many people to flooding.

Figure 4: Amadore, 2005; PINCC



Based from people’s account, there are nine (9) barangays already affected by sea level rise shown in *Table 2*. Succeeding *Table 3* shows the list of flood-prone barangays in the City. Nineteen (19) barangays are at risk to flooding. Most of these barangays are located at the low-lying city business district of the City.

Table 2: Barangays Affected by Sea Level Rise

Name of Barangay	Population	Land Area (has.)
Balogo	6,214	152.85
Bitan-O	3,240	19.20
Cabid-an	7,255	223.56
Cambulaga (urbanizing)	4,418	37.10
Piot	2,647	65.96
Sampaloc	4,719	12.58
Sirangan	2,595	4.96
Talisay	2,600	12.40
Poblacion	4,187	174.51
Total	37,875	703.12

Table 3: Barangays At Risk to Flooding

HAZARD	AREA	
Flooding	West Districts	Population
	Basud	2,811
	Capuy	2,561
	Gimaloto	1,050
	Piot	2,647
	Bitan-O	3,240
	Cambulaga	4,418
	Talisay	2,600
	East Districts	
	Buhatan	3,395
	Burabod	2,867
	Sirangan	2,595
	Salog	2,920
	Sampaloc	4,719
	Balogo	6,932
	Sulucan	523
	Bacon District	
	Poblacion	4,187
	Balete	2,684
	Buenavista	1,736
	Gatbo	2,494
	Osiao	3,174



Storm Surge

The storm surge brought by Typhoon Sisang in November 1987 caused the death of more than seven hundred (700) people in Sorsogon. With the City’s geographical location, the thirty-four (34) coastal barangays shown in *Table 4* remains to be highly at risk to storm surges.

Table 4: List of Coastal Barangays affected by Storm Surge

EAST/WEST DISTRICT Coastal Areas		BACON DISTRICT Coastal Areas	
Barangay	Population	Barangay	Population
1. Abuyog	4,359	1. Bato	1,756
2. Balogo	6,932	2. Bogna	1,413
3. Bitan-o-Dalipay	3,240	3. Bon-ot	623
4. Bucalbucalan	2,533	4. Buenavista	1,736
5. Buenavista	1,469	5. Caricaran	2,371
6. Bulabog	2,443	6. Gatbo	2,494
7. Buhatan	3,395	7. Del Rosario	950
8. Cabid-an	7,255	8. Osiao	3,174
9. Cambulaga	4,418	9. Poblacion	4,187
10. Capuy	2,561	10. Rawis	1,354
11. Gimaloto	1,050	11. Salvacion	1,308
12. Pamurayan	1,966	12. Sta. Lucia	481
13. Penafrancia	1,763	13. Sto. Domingo	1,300
14. Piot	2,647	14. Sto. Nino	2,455
15. Rizal	3,645	15. Sawanga	1,533
16. Sampaloc	4,719	16. Sugod	2,148
17. Sirangan	2,595	---	
18. Talisay	2,600	---	
TOTAL	59,590	TOTAL	29,283

Rain-Induced Landslide

Incessant intense rainfall and/or earthquake can trigger soil erosion, mass movement or landslide. In 2009, Barangays Osiao and Sto. Niño in Bacon District after a nonstop heavy rainfall brought by a Tropical Depression caused massive soil erosion in the area.

Table 5: Landslide-prone Barangays

Hazard	Area	Total Population
Landslides	Osiao	3,174
	Sto. Niño	2,455
	Salvacion	1,308
	Panlayaan	1,524
	San Isidro	1,563
	Rizal	3,645
	Buenavista	1,736
	Bucalbucalan	2,533

**Geologic Hazards**

Earthquake

Active faults and trenches are the common earthquake generators in the Philippines as shown in *Figure 5*. According to the map from the Philippine Institute of Volcanology and Seismology (PHIVOLCS), there is no active fault in Sorsogon City. The nearest active faults are situated in Albay and Masbate areas as shown in *Figure 6*.

According to the study conducted by the Manila Observatory and the Department of Environment and Natural Resources (DENR), Sorsogon Province is classified as Medium Risk to Earthquakes shown in *Figure 7*. The last destructive earthquake recorded in the City happened last July 7, 1954 with epicenter in Bacon, Sorsogon and 6.7 Magnitude. It left the City with 13 casualties and 101 individuals injured. The earthquake-prone areas in the country are also mapped as shown in *Figure 8*.

Figure 5: Active Faults and Trenches

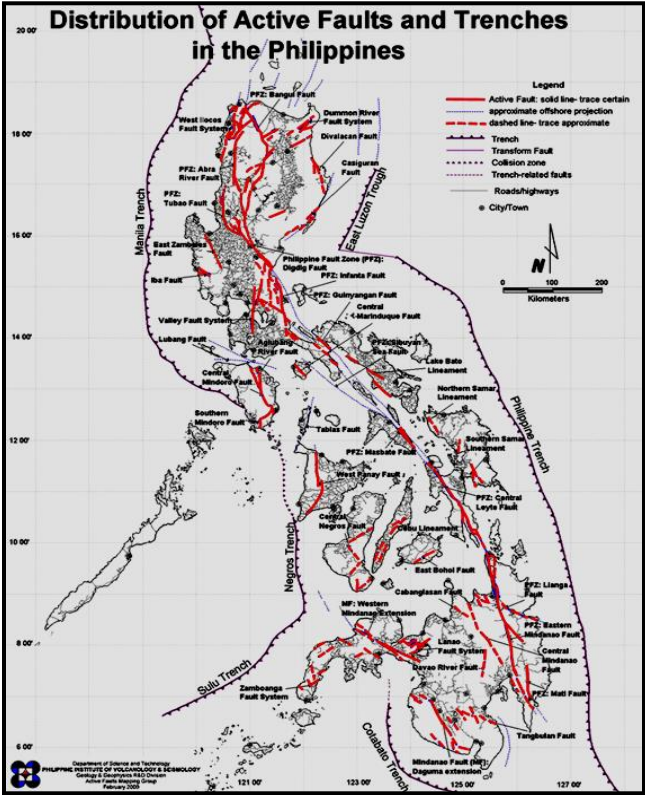


Figure 6: Active Faults in Region V

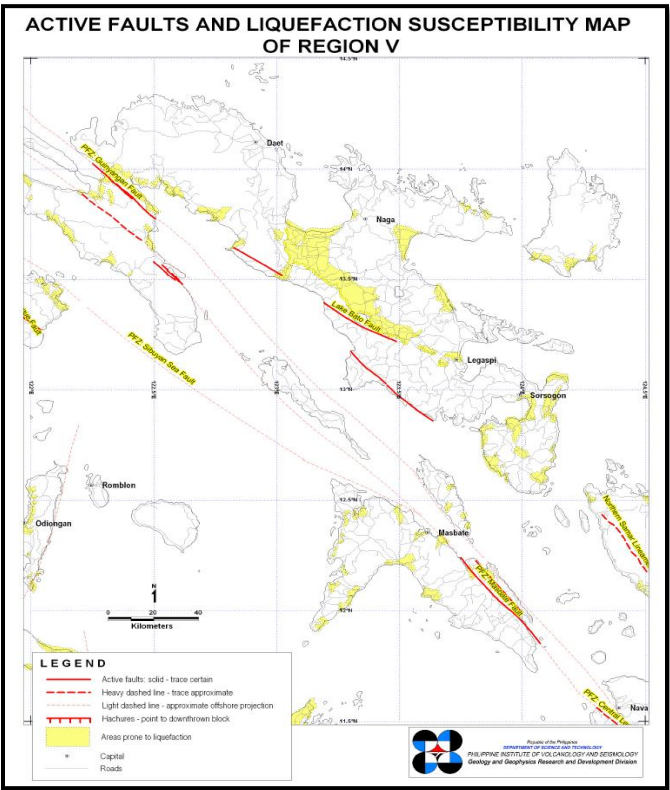


Figure 7: Risk to Earthquakes

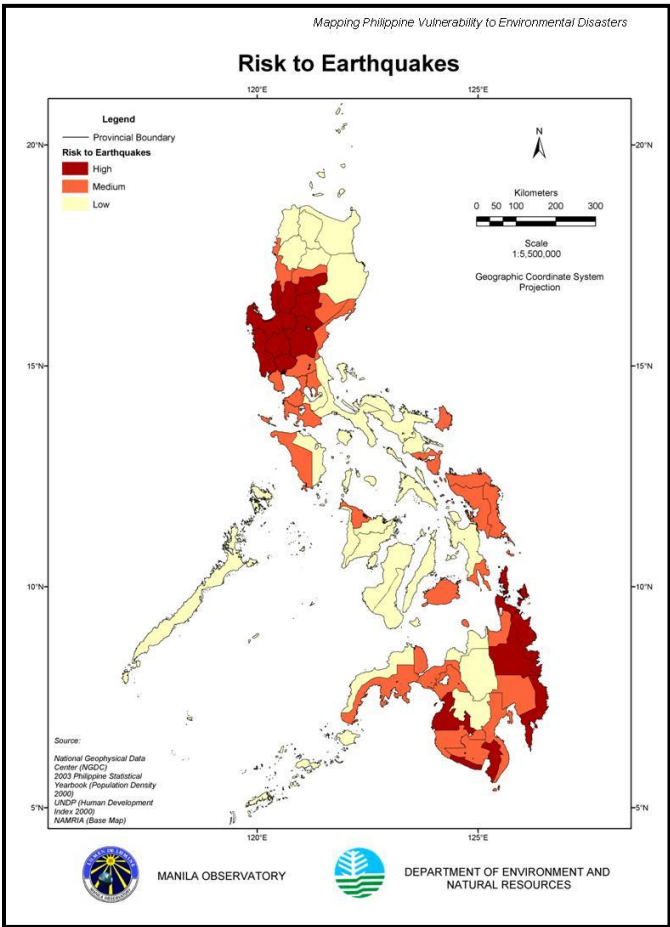
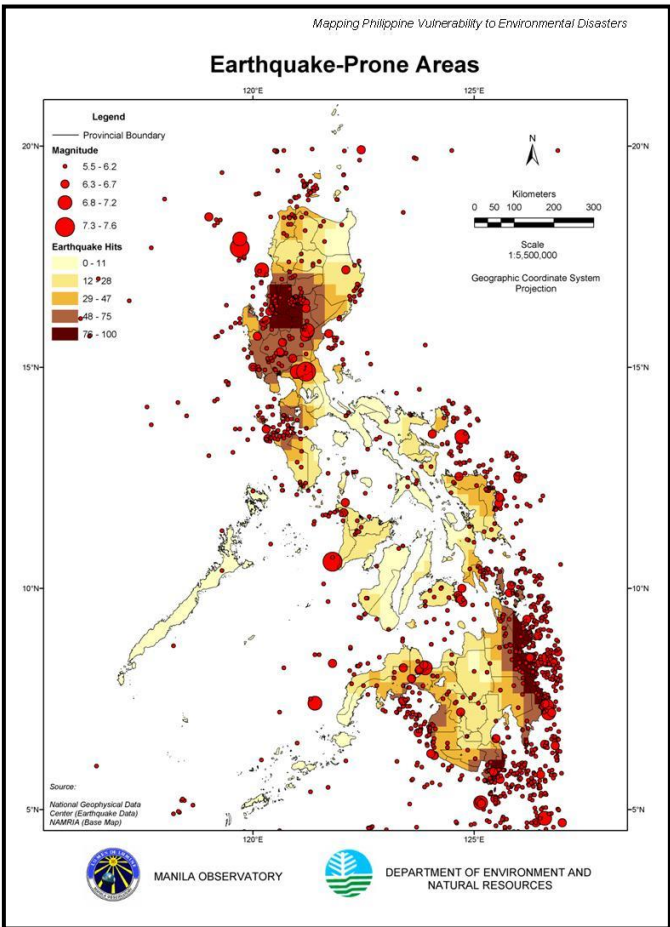


Figure 8: Earthquake-Prone Areas



Earthquake-induced Landslide

There are eight (8) barangays in the City highly susceptible to earthquake-induced landslide. These barangays are also susceptible to rain-induced landslide (Table 5). The hazard covers the barangays in the West and Bacon districts, surrounding Pocdol Mountain Range.

Ground Settlement/Subsidence

According to Mines and Geosciences Bureau 5 (MGB5)<sup>1</sup> as shown in Figure 13, there are areas in Bacon District, Sorsogon City which are susceptible to ground subsidence or sink holes, namely: Barangays Jamislagan, Sugod, Bato, Bon-ot, Balogo, and Sawanga.

Tsunami

Sorsogon City has no recorded tsunami-event. However, if earthquakes are generated from the Philippine and Pacific Trenches, the PHIVOLCS simulation model of an 8.1 magnitude earthquake showed possible tsunami-hit areas in Bacon district.

Volcanic Eruption

Sorsogon City is nowhere near the danger zone established by PHIVOLCS. The nearest volcano is Bulusan Volcano located at the nearby Municipality of Bulusan and Mayon Volcano in the Province of Albay. The Bulusan Volcano Observatory is located in Cabid-an, Sorsogon City.

The last recorded phreatic eruption of Bulusan Volcano happened last 6 November 2010, spewing dark ash clouds up to 6km above the crater for about 20 minutes and affecting the whole Municipality of Bulusan and 3 other neighboring towns of Juban, Irosin, and Casiguran.

**Others**

Fire

Fire incidence is not unusual in the densely populated urban barangays, where the city business district is also located. Table 6 shows the recorded fire incidents in the City from CY 2009 to present. Based from the record, most fires happened in residential areas while there were also incidents of fire in some institutions like schools and government offices. In 2014, a fire incident in a commercial establishment have recorded the biggest damaged with an estimated amount of 9.3Million pesos.

<sup>1</sup> <http://www.philstar.com/breaking-news/765951/40-bicol-towns-identified-geo-hazard-areas>

Table 6. Fire Incidents in Sorsogon City 2009 – present (Source: BFP – Sorsogon City)

YEAR	DATE	LOCATION	NO. OF VICTIMS	ESTIMATED DAMAGES	REMARKS
2000-2008	No available records due to typhoon damage				
2009	16 1700H Feb 2009	Rizal St., Piot, Sorsogon City	2 Residential houses	more/less 3.3 M	INDEX FIRE
	31 1448H May 2009	Botong Geothermal Plant, Tublijon, Sorsogon City	1 Industrial	more/less 1M	INDEX FIRE
	08 0255H Aug 2009	Caricaran, Bacon Dist., Sorsogon City	1 Residential house	more/less P100,000.00	INDEX FIRE
	21 1050H Sep 2009	Bishop's Comp., Magsaysay St., Sorsogon City	1 Residential house	more/less P250,000.00	INDEX FIRE
	04 1000H Oct 2009	Bulabog, Sorsogon City	Residential	more/less P50,000.00	INDEX FIRE
	08 1736H Oct 2009	Brgy. Bogña, Bacon Dist., Sorsogon City	Residential	more/less P50,000.00	INDEX FIRE
	13 1649H Oct 2009	15th St, OLV, Pangpang, Sorsogon City	1 Vehicle	more/less P60,000.00	INDEX FIRE
2010	08 1455H Feb 2010	9th Road, OLV, Bibincahan, Sorsogon City		more/less P250,000.00	INDEX FIRE
	19 1130H Mar2010	Talisay, Sorsogon City	Miscellaneous	more/less P250,000.00	INDEX FIRE
	23 2025H Mar 2010	Purok 7, Blk.1, Lee Homes Subd., Talisay, Sorsogon City	Residential	more/less P200,000.00	INDEX FIRE
	14 1130H May 2010	Rizal St., Piot, Sorsogon City	Residential	more/less P900,000.00	INDEX FIRE
	22 1345H May 2010	Purok 7, Bucalbucalan, Sorsogon City	Residential	more/less P80,000.00	INDEX FIRE
	26 2255H May 2010	Brgy. Balogo, Sorsogon City	Miscellaneous	more/less P180,000.00	INDEX FIRE
	15 0830H Jun 2010	West Bulod, Pob., Bacon Dist., Sorsogon City	Residential	more/less P200,000.00	INDEX FIRE
	01 0800H Sep 2010	Macabog, Sorsogon City	Residential	more/less P90,000.00	INDEX FIRE
	15 0103H Sep 2010	PEO Comp., Bibincahan, Sorsogon City	Vehicle	more/less P100,000.00	INDEX FIRE
	29 0540H Sep 2010	Maharlika Highway, Guinlajon, Sorsogon City	Assembly	more/less P200,000.00	INDEX FIRE
	27 0315H Oct 2010	Sawanga, Bacon Dist., Sorsogon City	Residential	more/less P60,000.00	INDEX FIRE
2011	02 1302H Feb 2011	Brgy. Guinlajon, Sorsogon City	1 storage	more/less P30,000.00	INDEX FIRE
	27 0142H Mar 2011	1st Ave., Doña Feliza, Brgy. Pangpang, Sorsogon City	1 Residential house	more/less P200,000.00	INDEX FIRE



	01 1730H Apr 2011	Brgy., Bibincahan, Sorsogon city	1 Business occupancy	more/less P150,000.00	INDEX FIRE
	03 1547H May 2011	Bacon Dist., Sorsogon City	1 Residential house	more/less P80,000.00	INDEX FIRE
	01 1305H Sep 2011	Brgy. Talisay, Sorsogon City	1 Mercantile occupancy	more/less P1,000,000.00	INDEX FIRE
	09 0345H Dec 2011	Molave St., SPPVS, Bibincahan, Sorsogon City	1 Residential house	more/less P400,000.00	INDEX FIRE
2012	26 1220H April 2012	Sirangan, Sorsogon City	23 Residential houses	more/less P1.5 M	INDEX FIRE
2013	17 1930H April 2013	Cabid-an, Sorsogon City	1 Industrial	more/less P50,000.00	INDEX FIRE
	25 1716H April 2013	Purok 7, Bitan-o, Sorsogon City	57 Residential houses	more/less P100,000.00	INDEX FIRE
	12 0254H June 2013	Nogales Comp., Balogo, Sorsogon City	1- fatality	more/less P800,000.00	INDEX FIRE
2014	05 2307H Feb 2014	Purok 7, Bulabog, Sorsogon City	9 Residential houses	Neg due to non-submission of Affidavit of Loss	INDEX FIRE
	15 0220H Feb 2014	Alegre St., Almendras, Sorsogon City	1 Educational	more/less P9,385,466.66	INDEX FIRE
2015	08 0842H June 2015	Purok 2, Ticol, Sorsogon City	1 Residential house	more or less P50,000.00	INDEX FIRE
	2245H 19 Aug 2015	M. Santos St., Polvorista, Sorsogon City	5 residential houses & 1 mixed occupancy	more or less Php 2,496,000.00	INDEX FIRE
2016	1826H 09 January 2016	Divina St., Talisay, Sor. City	-	more/less P5,000.00	NON INDEX FIRE
	20 0435H March 2016	Gabao Baba, Barangay Bibincahan, Sorsogon City	-	more/less P5,000.00	NON INDEX FIRE
	25 0247H May 2016	12th Road, Phase 2, Our Lady's Village Subd., Bibincahan, Sorsogon City	-	more/less P75,000.00	INDEX FIRE
	12 0918H June 2016	Brgy. Panlayaan, Sorsogon City	-	more/less P5,000.00	NON INDEX FIRE
	12 1828H June 2016	Miraculous Medal subd., Macabog, Sor City	-	more/less P9,000.00	NON INDEX FIRE
	15 2130H June 2016	Purok 2, Bulabog, Sorsogon City	-	more/less P9,000.00	NON INDEX FIRE
	06 2012H July 2016	Brgy. Cabid-an, Sorsogon City	-	more/less P700,000.00	INDEX FIRE
	09 0852H July 2016	Savemore Market, Magsaysay St., Sulucan, Sorsogon City	-	more/less P 5,000.00	NON INDEX FIRE

	04 1443H September 2016	BNCC Comp., Seabreeze Homes Subd., Cabid-an, Sorsogon City	-	more/less P9,000.00	NON INDEX FIRE
	05 1148H September 2016	Purok 5, Tugos, Sorsogon City	-	more/less P4,000.00	NON INDEX FIRE
	16 0343H September 2016	Gate 2, Seabreeze Homes Subd., Cabid-an, Sorsogon City	-	more/less P5,000.00	NON INDEX FIRE
	19 1310H October 2016	17th St. OLV, Pangpang, Sorsogon City	-	more/less P9,000.00	NON INDEX FIRE
	30 2121H October 2016	Pigsabunan, Poblacion, Bacon Dist., Sorsogon City	-	more/less P9,000.00	NON INDEX FIRE
	10 1518H November 2016	Sitio Malabog, San Pascual, Bacon Dist., Sorsogon City	-	more/less P9,000.00	NON INDEX FIRE
	11 1021H November 2016	San Juan, Bacon Dist., Sorsogon City	-	more/less P9,500.00	NON INDEX FIRE
	2330 11 December 2016	Sitio Bisita, Abuyog, Sorsogon City	-	more/less P1,500.00	NON INDEX FIRE
	0922H 30 December 2016	Sirangan, Sorsogon City	-	more/less P9,000.00	NON INDEX FIRE
2017	0909H 02 January 2017	Sorsogon City Hall, Sorsogon City	-	more/less P 9,500.00	NON INDEX FIRE
	1358H 08 February 2017	Magsaysay St., Sulucan, Sorsogon City	-	Negative	NON INDEX FIRE
	1937H 17 May 2017	Brgy. Maricrum, Bacon Dist., Sorsogon City	-	more or less P9,000.00	NON INDEX FIRE
	1426H 24 May 2017	Brgy. Pangpang, Sorsogon City	-	more or less P9,000.00	NON INDEX FIRE
	1515H 17 June 2017	Sitio Tagalwoy, Gatbo, Bacon Dist., Sorsogon City	-	more or less P9,000.00	NON INDEX FIRE
	24 1750H September 2017	Sitio Sirangan, Diversion Road, Macabog, Sorsogon City	-	more or less P2,000.00	NON INDEX FIRE
	19 0545H October 2017	Basud, West District, Sorsogon City	-	more/less P90,000.00	INDEX FIRE
2018	2155H 17January 2018	Isla De Higante, Burabod,Sorsogon City	-	more/less P 5,000.00	NON INDEX FIRE
	1513H 21January 2018	Macabog,Sorsogon City	-	more/less P 300.00	NON INDEX FIRE
	1535H 06 March 2018	Kasanggayahan Vilage, Capitol Compound, Sorsogon City	-	more/less P 1,000.00	NON INDEX FIRE
	01 0940H April 2018	Sitio Banao,Brgy. Salvacion, Bacon District, Sorsogon City	-	more/less P 5,000.00	NON INDEX FIRE
	14 1342H November 2018	Peña Francia Ave. Corner 3rd St. OLV,	-	more/less P150,000.00	INDEX FIRE

		Bibincahan, Sorsogon City			
	11 0300H December 2018	Celestino G. Tabuena National High School, Guinlajon, Sorsogon City	-	more or less P40,000.00	INDEX FIRE
	24 0100H December 2018	Brgy. Balete, Bacon District, Sorsogon City	-	more or less P5,000.00	NON INDEX FIRE
2019	18 1440H January 2019	Barangay Barayong, Sorsogon City	-	more or less P4,000.00	NON INDEX FIRE
	18 1642H January 2019	15th St. OLV, Pangpang, Sorsogon City	-	more or less P8,000.00	NON INDEX FIRE
	22 1420H January 2019	Kilometro Onse, Abuyog, Sorsogon City	-	more or less P40,000.00	INDEX FIRE
	29 0820H January 2019	Sto. Domingo, Bacon Dist., Sorsogon City	-	more or less P6,000.00	NON INDEX FIRE
	21 2257H February 2019	Purok 3, Barangay Tugos, Sorsogon City	-	more or less P200,000.00	INDEX FIRE
	03 0943H March 2019	Cervantes Compound, Brgy. Buenavista, Sorsogon City	-	more or less P 9,000.00 pesos	NON INDEX FIRE
	07 1541H March 2019	Sitio Madan-an, Brgy. Bibincahan, Sorsogon City	-	more or less P 100,000.00 pesos	INDEX FIRE
	16 2001H April 2019	San Isidro, West District, Sorsogon City	-	more or less P 70,000.00 pesos.	INDEX FIRE
	13 November, 2019	DepEd, Sorsogon City	-	more or less P 144,000.00 pesos	INDEX FIRE
	02 December, 2019	Tugos, Sorsogon City	-	more or less P 100,000.00 pesos	INDEX FIRE
	03 December, 2019	Bibincahan, Sorsogon City	-	more or less P 150,000.00 pesos	INDEX FIRE
2020	05 February, 2020	Sitio Bankal, Sorsogon City	-	more or less P 15,000.00 pesos	INDEX FIRE
	17 April, 2020	Garcia St., Sorsogon City	-	more or less P 14,000.00 pesos	INDEX FIRE

A rare case of Bush Fire Incident also happened in Sitio Tiagao, Barangay Osiao, Bacon District, Sorsogon City sometime in August 2014. According to the BFP report, an estimated of 9 – 12 hectares of tiger grass, cassava, young coconut tree and other root crops were engulfed by fire.

Vehicular Accidents

Sorsogon City, being the hub of government, commerce and education in the Province, is not also far from vehicular accidents. Aside from sport utility vehicles (SUVs), the national and provincial highways of the City are regularly plied with six-wheeler trucks, light trucks, and buses going to the Visayas and Mindanao provinces. The city roads are covered 24/7 by tricycles, motorcycles, jeepneys and vans.

Table 7 shows the data from the Philippine National Police (PNP) Sorsogon City Station on the recorded vehicular accidents that happened in the City from 2013 to 2016. Accidents involving motorcycles have recorded the biggest number from 2014 to 2016.

Table 7: DATA ON VEHICULAR ACCIDENT (Source: PNP-Sorsogon City)

RECKLESS IMPRUDENCE RESULTING TO	2013	2014	2015	2016 ( Jan to July)
Homicide	9	8	11	2
Physical Injury	200	45	136	37
Damage to Property	208	21	92	38
Total	417	74	239	77
No of Victims		102	316	106
Vehicle Involve				
MC		46	145	38
TC		15	103	23
Bus		1	15	2
Truck		2	39	12
Jeepney		3	17	6
Others		42	98	49

Records from the dispatch logbook of the City DRRM Office shown in Figure 9 and 10, displays the monthly response of the Office from 2018 to 2019. In 2018 and 2019, the Office has a total of 439 and 423 trauma response, respectively. This includes vehicular accidents and/or self-accident. While for medical response, data showed an almost doubling numbers with 294 in 2018 and 426 in 2019.

Figure 9: CDRRMO Response for 2018

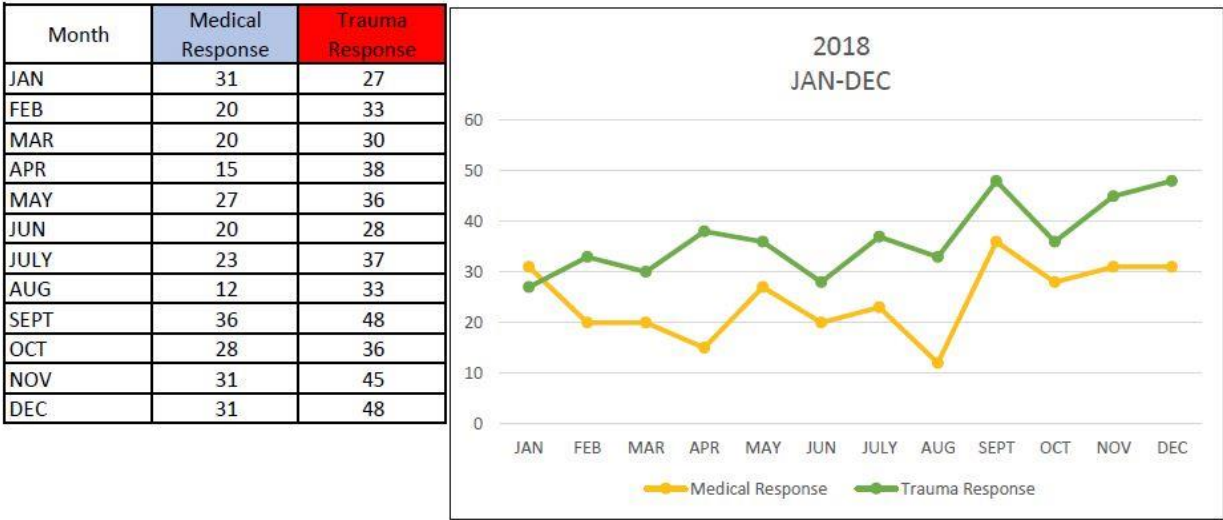
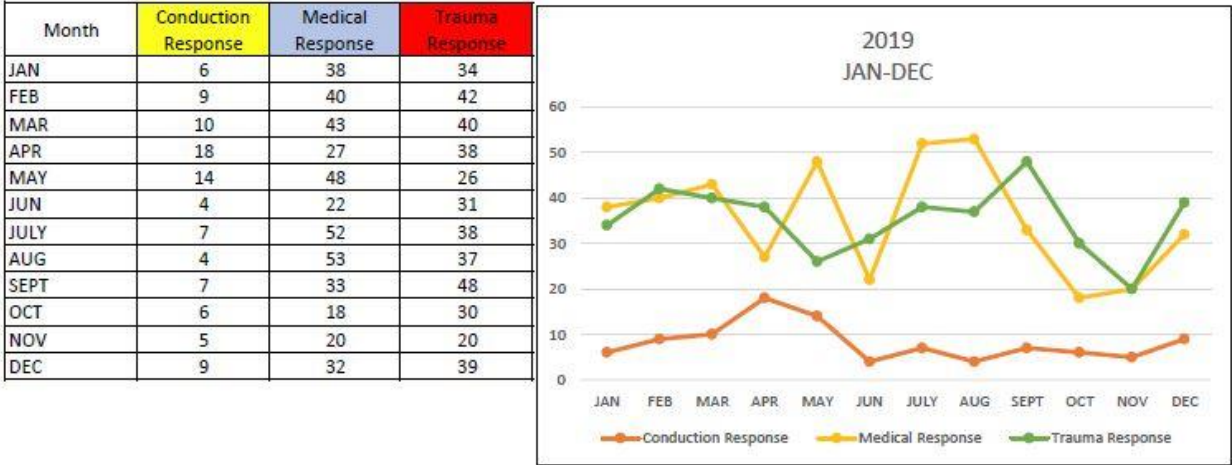


Figure 10: CDRRMO Response for 2019







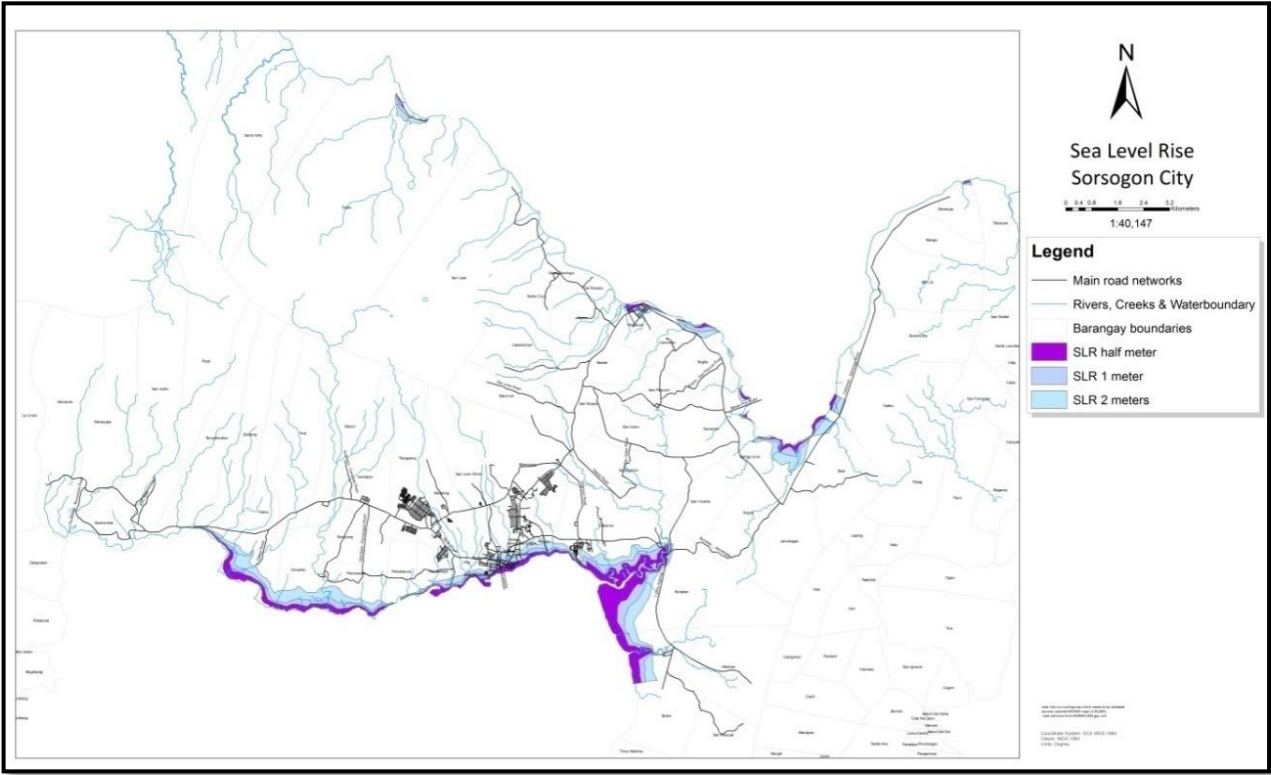


Figure 12: Sea Level Rise Map

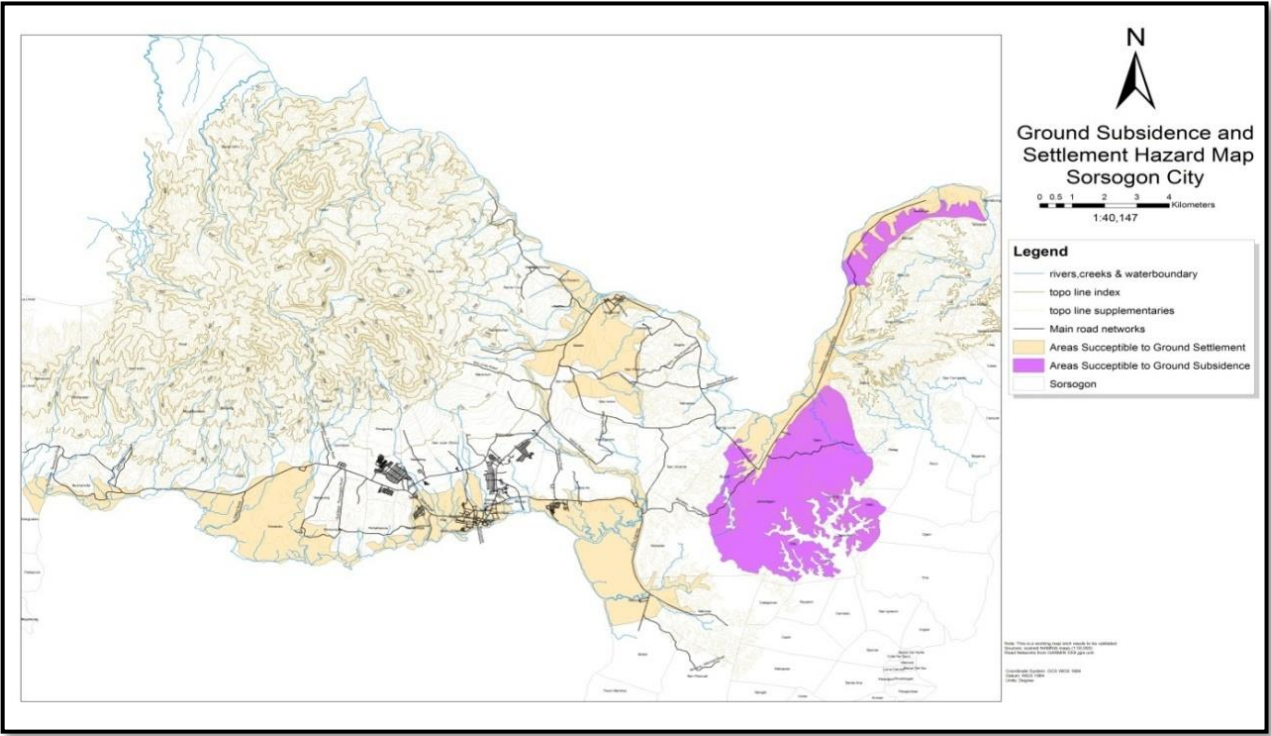


Figure 13: Ground Subsidence and Settlement Hazard Map

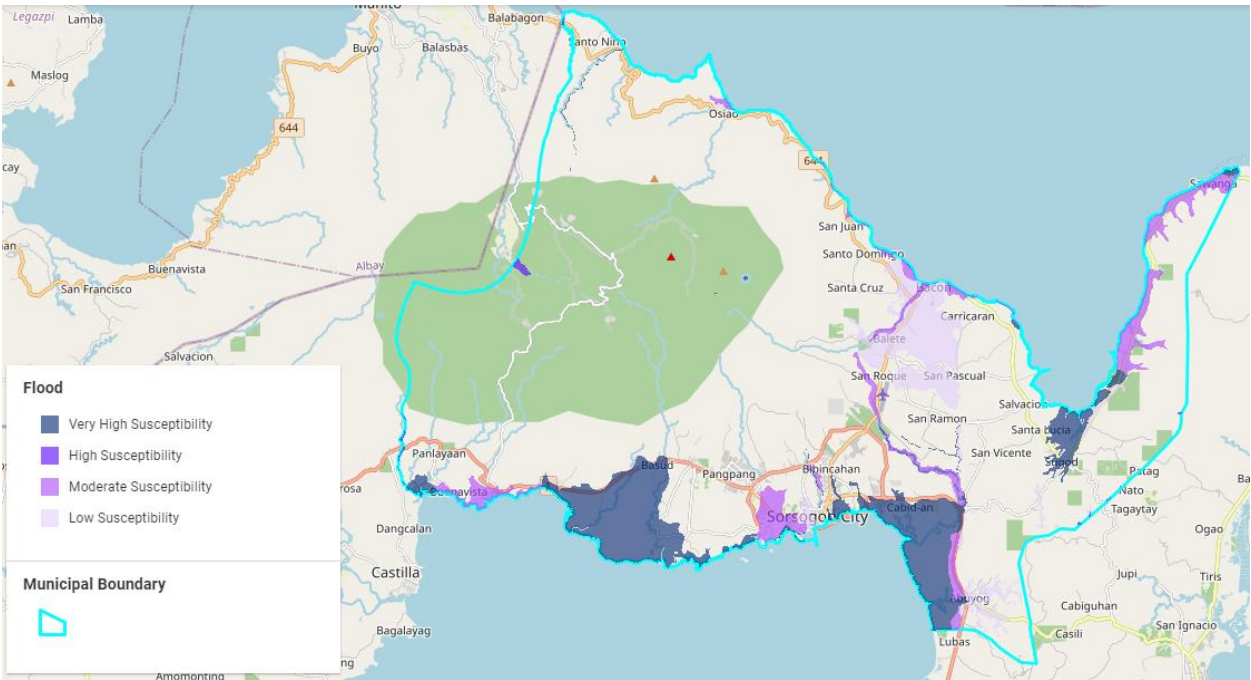
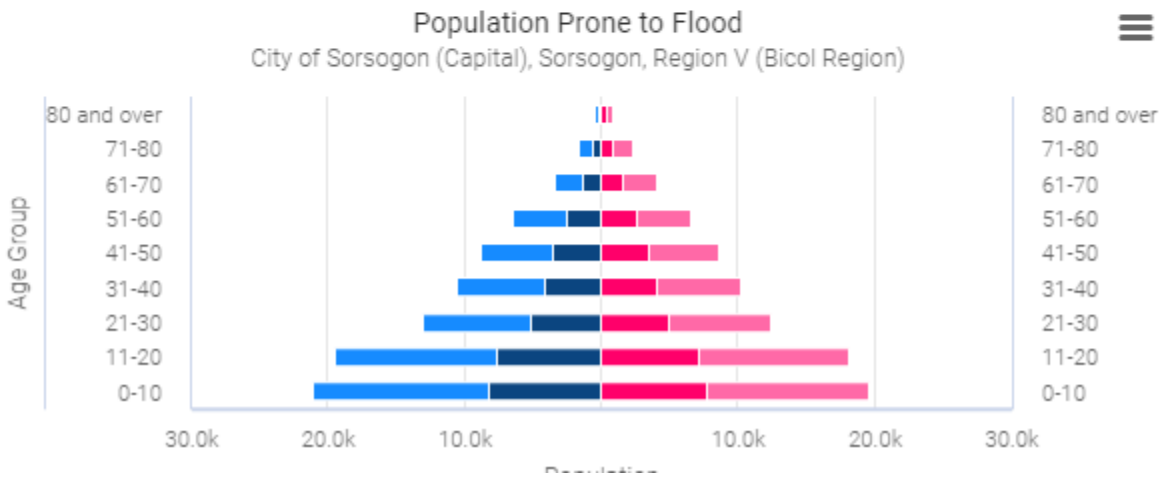
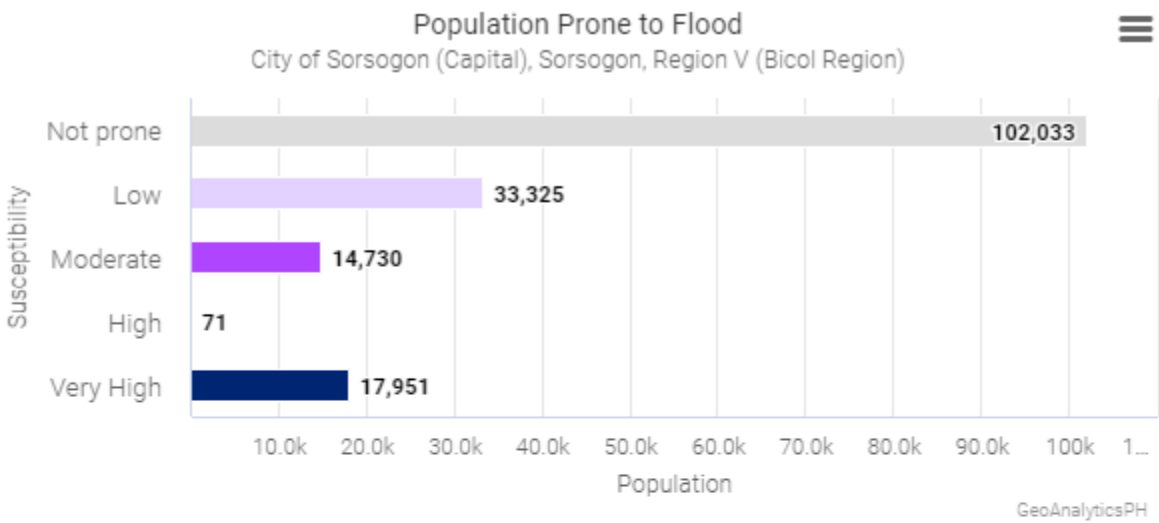


Figure 14: Flood Hazard Map



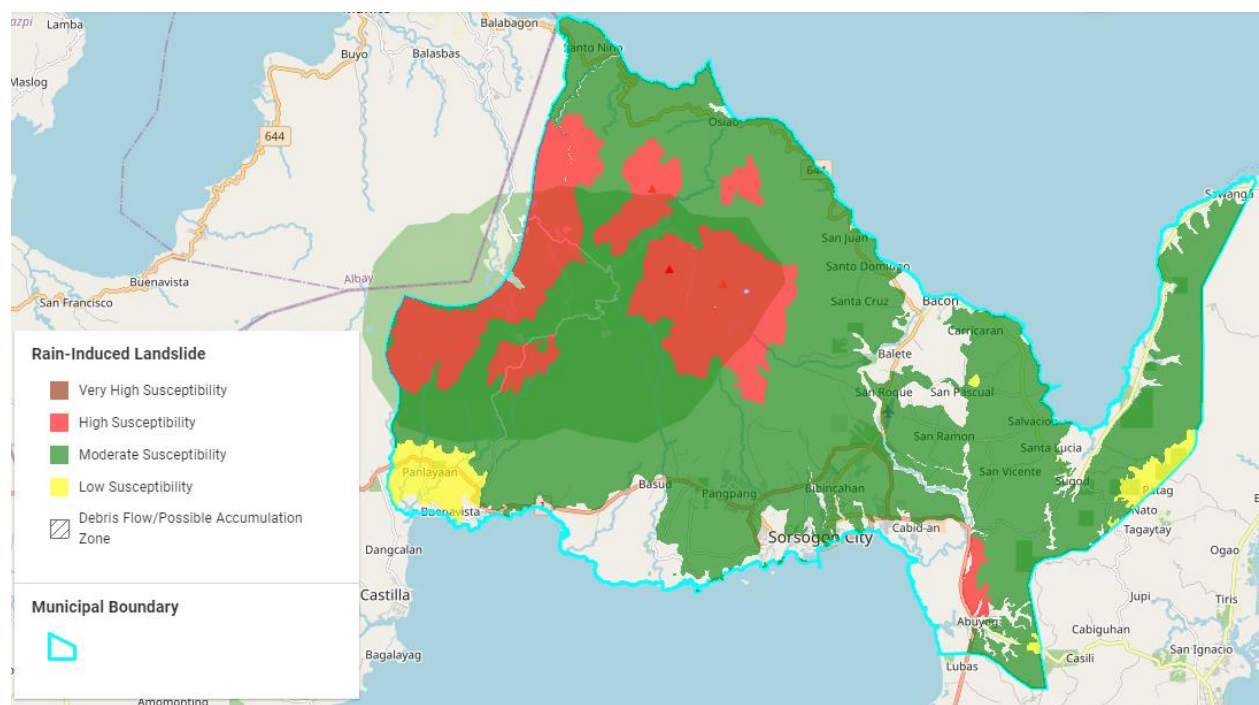
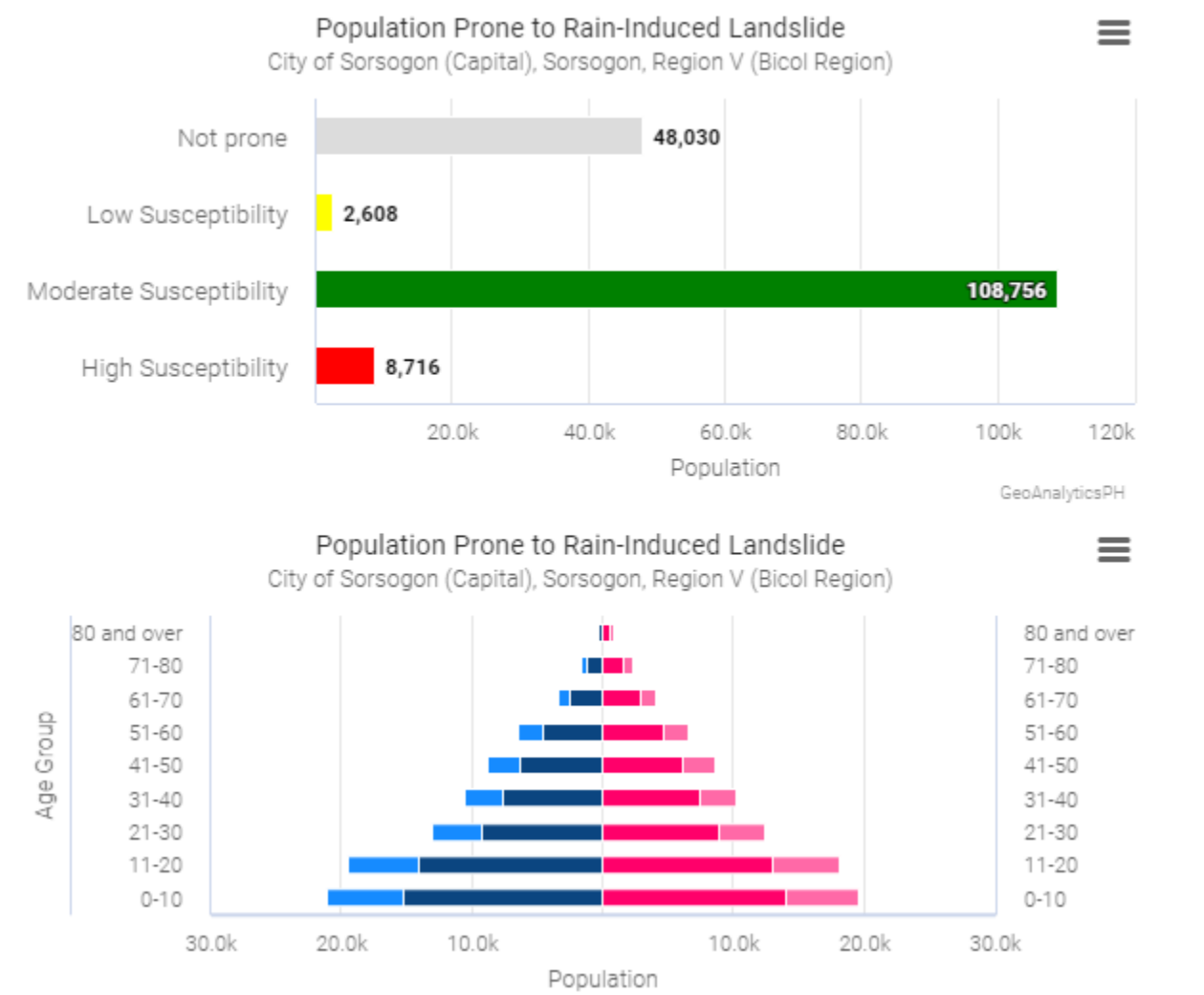


Figure 15: Map of Landslide Prone Areas





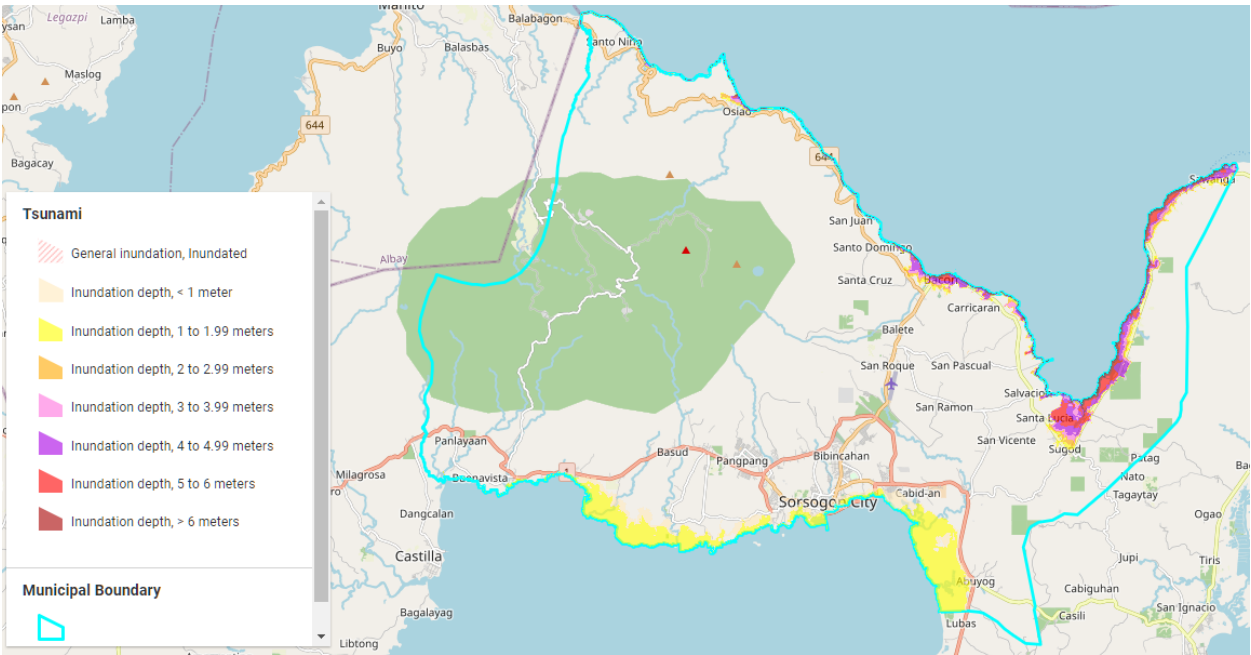
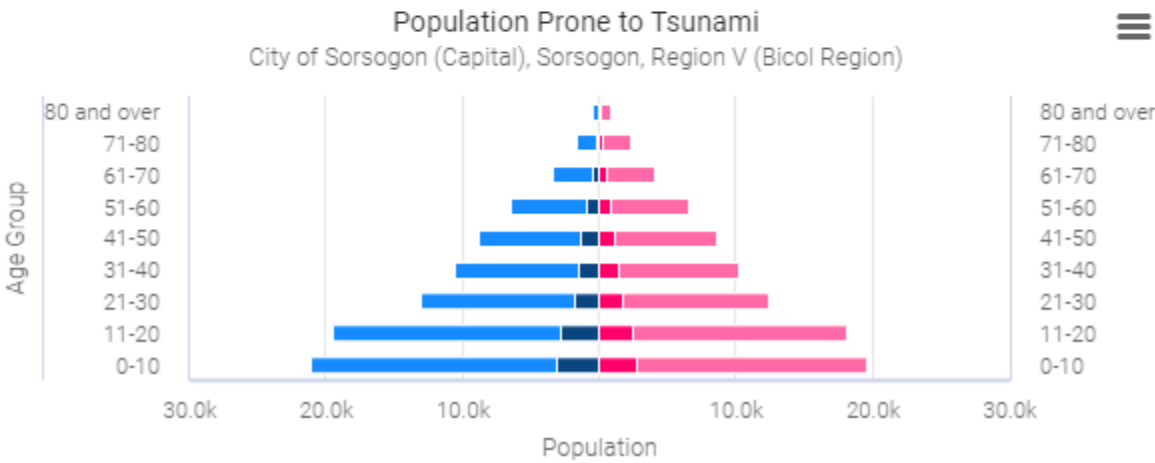
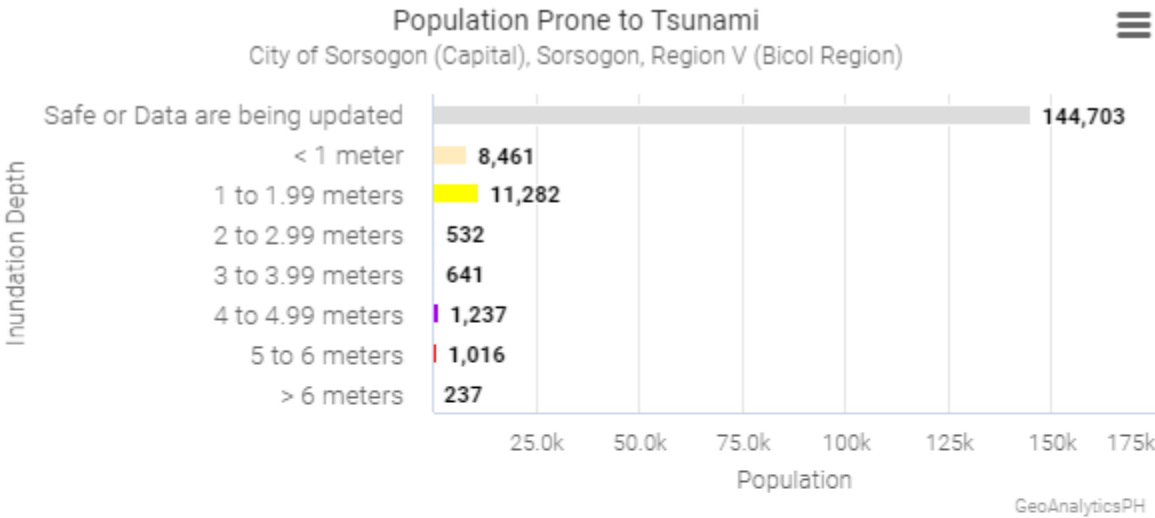


Figure 16: Map of Tsunami Prone Areas



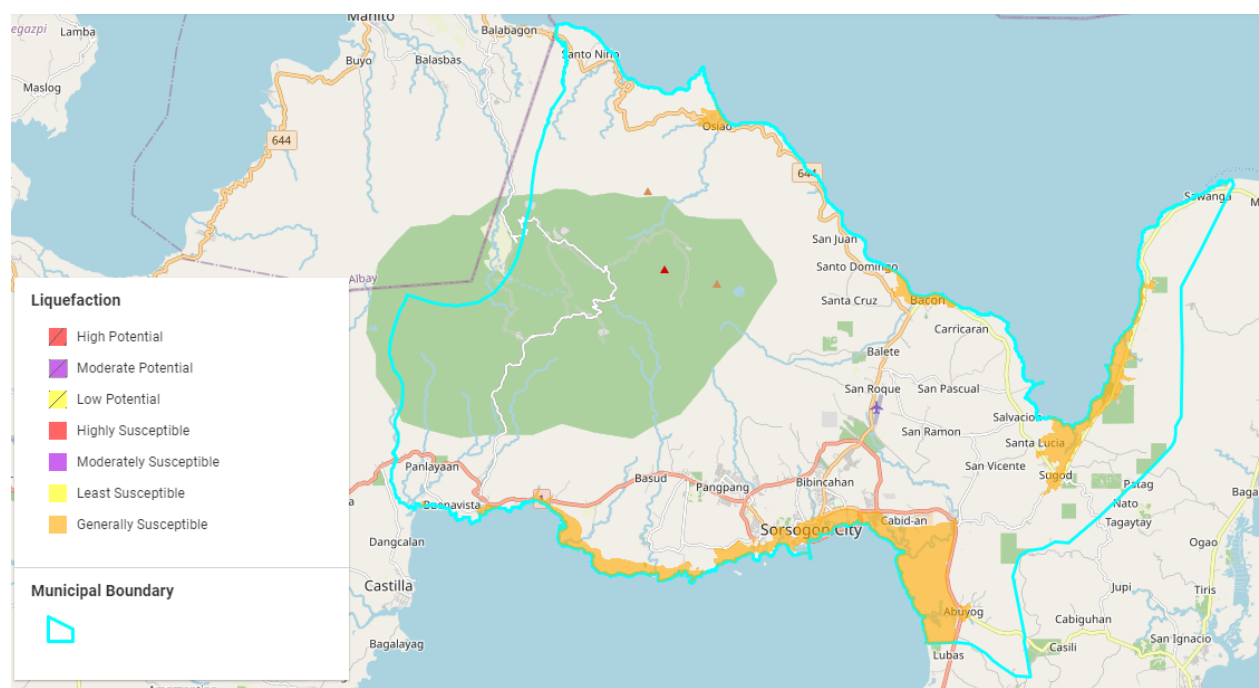
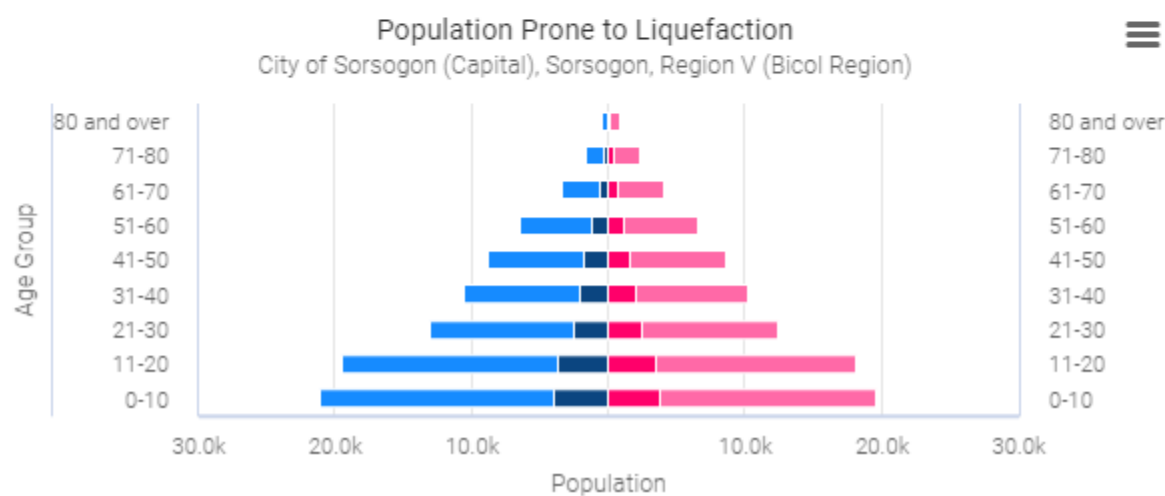
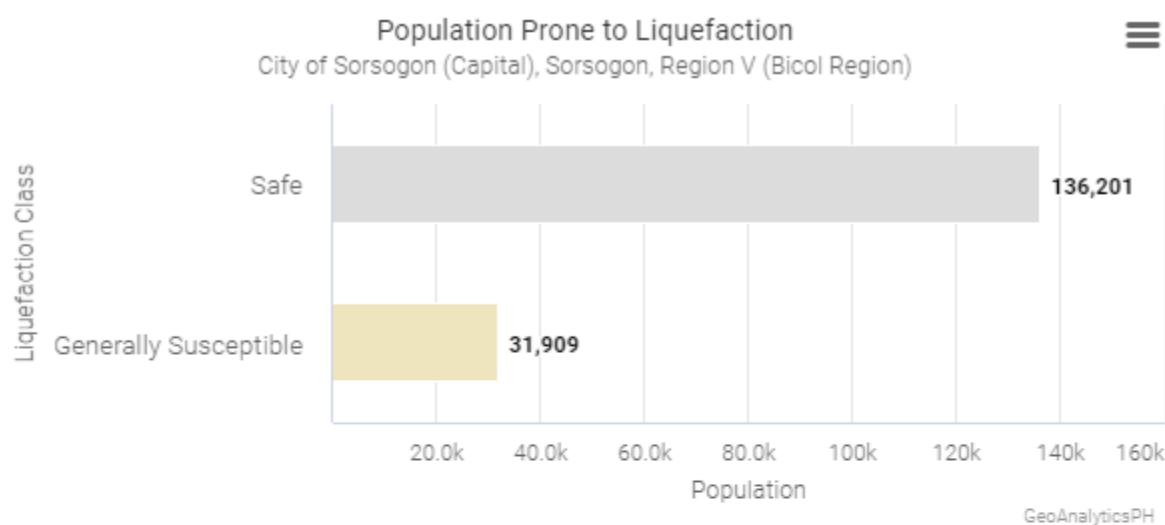


Figure 17: Map of Liquefaction Prone Areas





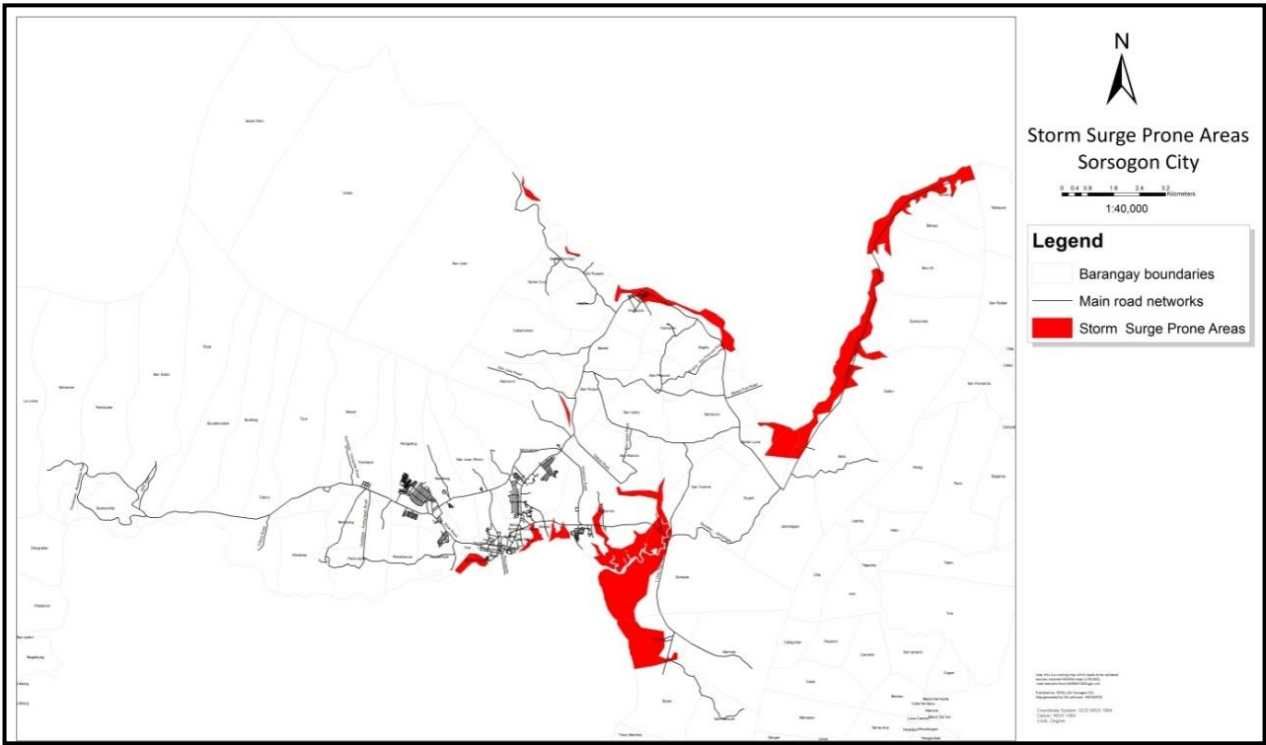


Figure 18: Map of Storm Surge Prone Areas

## V. SITUATIONAL ANALYSIS

DISASTER PREVENTION AND MITIGATION			
STRENGTHS	WEAKNESSES	OPPORTUNITIES	CHALLENGES
<ul style="list-style-type: none"> <li>Established Local DRRM Council</li> <li>Existence of Local Hazard Maps</li> <li>Sufficiency of funds</li> <li>Existence of Early Warning System (Public Address System, Infocast messaging)</li> <li>Presence of seawall, coastal road, and other slope protection structures</li> <li>Availability of plans (CLUP, CDP, AIP) which integrate and mainstream DRRM</li> </ul>	<ul style="list-style-type: none"> <li>Lack/Absence of hazard and road warning signs</li> <li>Non-compliance of some public and private facilities and infrastructure to basic building and fire code</li> <li>Geographical location, the City is bounded by bodies of water</li> <li>Exposure of vulnerable sector to hydrometeorological hazard</li> <li>Lack of structural audit to public and lifeline buildings/facilities</li> </ul>	<ul style="list-style-type: none"> <li>Existence of civil society organizations and private sector which can be tapped for DRRM activities</li> <li>Technical experts and external agencies to provide assistance</li> <li>Structural (e.g. additional seawalls) and non-structural (e.g. policies) improvements</li> <li>updating of CLUP and zoning ordinance</li> </ul>	<ul style="list-style-type: none"> <li>Presence of houses made out of light materials</li> <li>Absence of Emergency Management Plans of schools and other critical facilities</li> <li>Dependence on the government assistance</li> <li>implementation of ridge to reef approach (environmental development)</li> <li>Presence of houses made out of light materials</li> </ul>

DISASTER PREPAREDNESS			
STRENGTHS	WEAKNESSES	OPPORTUNITIES	CHALLENGES
<ul style="list-style-type: none"> <li>Presence of basic services (hospitals, police stations, fire stations, schools, churches, and other infrastructures) in the central part of the municipality (government center); government institutions; private sector and CSOs; local resources</li> <li>Functional and trained CDRRMC &amp; CDRRMO</li> <li>Organized and trained BDRRMCs</li> </ul>	<ul style="list-style-type: none"> <li>Some public and private facilities and infrastructures found to be non-compliant to basic building and fire codes</li> <li>Coastal location</li> <li>Presence of low-lying urban areas w/o proper drainage</li> <li>Lack of "self help" concept</li> <li>Lack of conscious effort of the people to become proactively engaged in DRRM</li> <li>minimum involvement of private sector and CSOs</li> </ul>	<ul style="list-style-type: none"> <li>possible outsourcing (external assistance) possible partnerships with NGOs, CSOs, private sectors</li> <li>capacity building for all barangays, LDRRMC members, LGU employees</li> <li>possible involvement of communities on DRRM (preparedness) efforts</li> <li>improvement of livelihood activities</li> <li>local resources will be utilized efficiently</li> </ul>	<ul style="list-style-type: none"> <li>lack of outsourcing; no external assistance available / availed</li> <li>cooperation of communities ("busy kami") and other stakeholders</li> <li>(re)organization and capacity building of BDRRMCs</li> <li>Absence of Disaster Control Groups in public and private sector</li> </ul>

DISASTER RESPONSE			
STRENGTHS	WEAKNESSES	OPPORTUNITIES	CHALLENGES
<ul style="list-style-type: none"> <li>• Location of government offices in central part provides accessibility for immediate response</li> <li>• Identified relief-based centers</li> <li>• Functional Emergency Operation Center</li> <li>• Activated City DRRM Council</li> <li>• Presence of communication facilities</li> <li>• Trained emergency responders</li> <li>• Available evacuation centers</li> </ul>	<ul style="list-style-type: none"> <li>• Absence of Standard Operating Procedures for every type of calamity or disaster, and pandemic</li> <li>• Indifference, little participation &amp; cooperation on the part of the community to work with the government</li> <li>• Incident Command System not always followed or practiced</li> </ul>	<ul style="list-style-type: none"> <li>• Support and cooperation of government agencies during emergencies or disasters</li> <li>• Activation of inter-agency assessment team</li> <li>• Institutional arrangement with local businesses for relief operation purposes</li> </ul>	<ul style="list-style-type: none"> <li>• No standard evacuation facilities</li> <li>• Limitation on the use of schools as evacuation centers</li> <li>• Limited involvement of private sector and civil society organizations</li> <li>• Dependence of communities to government</li> <li>• Budget limitation</li> </ul>

DISASTER RECOVERY AND REHABILITATION			
STRENGTHS	WEAKNESSES	OPPORTUNITIES	CHALLENGES
<ul style="list-style-type: none"> <li>• 50% of the population can recover themselves quickly</li> <li>• Geographical location readily accessible for engineering recovery and rehabilitation</li> <li>• Population has skills which can be utilized for community based recovery</li> <li>• Presence of alternate routes going to the interior barangays</li> </ul>	<ul style="list-style-type: none"> <li>• High government dependency</li> <li>• Budget limitation</li> </ul>	<ul style="list-style-type: none"> <li>• Urban sprawl and development</li> <li>• Geographical accessibility for engineering recovery and rehabilitation</li> <li>• Use of skilled local communities for infrastructure reconstruction</li> <li>• Livelihood openings</li> </ul>	<ul style="list-style-type: none"> <li>• Economic recovery</li> <li>• Budget limitation</li> </ul>

VI. THEMATIC AREA PLAN

Thematic Area 1: Disaster Prevention & Mitigation

OVER-ALL RESPONSIBLE AGENCY: DOST

LEAD OFFICE: CPDO

Output	Activities	Performance Indicator	Responsible Office	Funding Source	Funding Requirement	Timeline					
						2020		2021		2022	
						Budget	Target	Budget	Target	Budget	Target
Outcome 1: DRRM and CCA mainstreamed and integrated in local development policies, plans and budget											
1. Impacts of risks on development programs and projects are well recognized in government plans and budgets	1.1 Utilization of not less than 5% of budget dedicated on DRRM-CCA	UTILIZED not less than 5% of budget dedicated on DRRM-CCA	CDRRMO	LDRRMF	195,000,000.00	55000000	–	65000000	–	75000000	–
	1.3 Establishment of Barangay Materials Recovery Facilities	No. MRFs established	CENRO / Brgys	CENRO / 20% Dev't Fund	1,000,000.00			500,000	8	500,000	10
	1.4 Provision of pushcarts as waste collection vehicles to Barangays	No. of Pushcarts provided to Barangays	CENRO / Brgys	CENRO / 20% Dev't Fund	2,000,000.00		-	800,000	40	1,200,000	60
	1.5 Declogging of canals and waterways	No. of Declogging activities conducted	CENRO/ CEO/ BRGYS	CENRO / 20% Dev't Fund	250,000.00	100000	4	50,000	10	100,000	20

# City DRRM Plan | 2020 - 2022

	1.6 Conduct of compliance monitoring of business establishment to Sorsogon City Anti-Plastic Ordinance (SCAPO)	No. of compliance monitoring conducted	CENRO / EAC	CENRO Budget	300,000.00	50000	10	100,000	20	150,000	30
2. Decisions supported by tools and technologies that facilitate the financial and economically sound mainstreaming of DRRM and CCA	2.1 Preparation of project Proposals related to DRRM and CCA	Project Proposals related to DRRM and CCA such as but not limited to community based surveys on flood prone areas prepared	CDDRMO	CDRRMO Budget							
3. Enhanced CSOs and NGOs participation in regional and local DRRMCs	3.1 Inventory of City wide CSOs	Inventory, Selection and accreditation of CSOs participation to reorganized CDRRMC	CPDO /SP								
	3.2 Selection of CSOs for membership to CDRRMC										
	3.3 Accreditation of selected CSOs										
	3.4 Orientation of selected CSOs										
4. Measures to reduce vulnerability and to increase capacity to cope with disasters are integrated in plans,	4.1 Issuance of executive order directing to integrate and mainstream DRRM - CCA Programs to CDP, CLUP and AIPs.	Executive Order integrating and mainstreaming DRRM to CDP, CLUP and AIP issued	CMO/ CPDO	-	-	-	1	-	1	-	1

# City DRRM Plan 2020 - 2022

programs and projects	4.2 Monitor the implementation of the executive order										
	4.3 Updating and Finalize the CLUP										
5. Local DRRM Councils established	5.1 Issuance of EO reorganizing CDRRMC	CDRRMC reorganized	CMO/CDRRMO	LDRRMF					-	-	-
	5.2 Convene the CDRRMC for the organizational meeting	Meeting convened	CDRRMO	LDRRMF	300,000.00	100,000	-	100,000	-	100,000	-
	5.3 Provision of CDRRMC conference room for CDRRMC meetings	Conference room provided	CDRRMO	-	-	-	-	-	-	-	-
	5.4 Formulate internal rules	Internal Rules Formulated	CDRRMO	-	-	-	-	-	-	-	-
6. Disaster Prevention, Mitigation and CCA IEC	6.1 Formulate IEC program for DRRM and CCA	IEC program for DRRM and CCA formulated	CDRRMO	-	-	-	1	-	1	-	1
	6.2 Conduct lectures on natural hazards and climate change	Lectures on natural hazards and climate change conducted	CDRRMO	-	-	-	-	-	-	-	-
	6.3 Monitor the implementation of IEC Programs for DRRM and CCA	Accomplishment Reports Submitted	CDRRMO	-	-	-	-	-	4	-	4
7. Climate Farmers Field School (CFFS)	7.1 Training of Agricultural Extension Workers	Target farmer beneficiaries trained	CASO	CASO Budget	300,000.00	100000	10	100,000	20	100,000	30



# City DRRM Plan 2020 - 2022

	7.2 Identify Farmer beneficiaries for Farmer Field School		CASO	-	-	-	10	-	20	-	30
	7.3 Orientation of farmer beneficiaries for Farmer Field School	Farmer Beneficiaries Oriented	CASO	CASO Budget	300,000.00	100000	10	100,000	20	100,000	30
	7.4 Conduct Farmer Climate Resilient field school (CRFS)	No of CRFS conducted									
8. Climate Change Adaptation Projects	8.1 Plant early maturing/drought tolerant varieties	No. of beneficiaries	CASO	CASO Budget	-	-	1000	-	1000	-	1000
	8.2 Apply organic fertilizers to increase moisture retention	No. of beneficiaries	CASO	CASO Budget	450,000.00	150000	500	150,000	500	150,000	500
	8.3 Practice crop diversification, rotation intercropping and cover crops (Palayamanan concept)	No. of beneficiaries	CASO	CASO Budget	450,000.00	150000	500	150,000	500	150,000	500
	8.4 Gulayan sa paaralan (seeds supplied by CASO)	100 % of PUBLIC schools (ELEMENTARY AND SECONDARY)	DepEd/CASO	CASO Budget	3,000,000.00	1000000	100%	1,000,000	100%	1,000,000	100%
9. Integrated Pest Management (IPM)	9.1 Promote pest and disease resistant/ tolerant varieties	No. of beneficiaries	CASO	CASO Budget	-	-	175	-	350	-	700
	9.2 Train Farmer beneficiaries in preparing organic pesticides (concoctions)	No. of Farmer beneficiaries trained	CASO	CASO Budget	300,000.00	100000	175	100000	350	100000	700

## City DRRM Plan **2020 - 2022**

	9.3 Conduct IEC on IPM (organic)	No. of trainings conducted	CASO	CASO Budget	900,000.00	200000	4	300,000	6	400,000	8
10. Good Agricultural Practices	10.1 Practice Organic Agriculture (OA)	No of practicing beneficiaries	CASO	-	-	-	175	-	350	-	700
	10.2 Conduct IEC on OA	No. IECs conducted	CASO	CASO Budget	900,000.00	200000	4	300,000	6	400,000	8
<b>Outcome 2: DRRM and CCA -sensitive environmental management</b>											
1. Reforestation Program	1. Seedlings planted	No. of seedling planted	CENRO	20% Dev. Fund	1,150,000.00	300000	10,000	400,000	15,000	450,000	20,000
2. Forest Protection	2.1 Riverbank stabilization	has of riverbank planted with kawayan-tinik	CENRO	20% Dev. Fund	2,300,000.00	500000	50	800,000	80	1,000,000	100
	2.2 Implementation of IEC plan.	IEC Plan implemented	CENRO	20% Dev.Fund	300,000.00	100000	10	100,000	10	100,000	10
	2.3 Formulation of Forest Protection Plan.	Forest Protection Plan Formulated	CENRO	Non-Office Budget							
	2.4 Mangrove Planting.	Area of mangrove planted (has)	CENRO	20% Dev. Fund	3,000,000.00	800000	80	1,000,000	100	1,120,000	120
3. Land Uses	Forest land use management and maintenance	Zoning ordinance implemented	CZAO	20% Dev. Fund	30,000.00	10000	1	10,000	1	10,000	1
4. Forest Development	4.1 Monitoring of established plantations.	No. of hectares of forest plantations monitored	CENRO	20% Dev. Fund		50000	200	100,000	300	150,000	400
	4.2 Beach Clean -Up	No.of beach clean activities	CENRO	LGU Non-Office	150,000.00	40000	8	50,000	10	60,000	12
5. Irrigation projects	5.1 Construct small farm reservoirs/small water impounding	No. of SFR's constructed	CEO / CASO	20% Dev. Fund	3,750,000.00	1250000	25	1,250,000	25	1,250,000	25

	5.2 Projects to prevent flash floods projects such as dams, SWIP's, Small farm Reservoir to impound water.	No. of beneficiaries	CEO / CASO		3,750,000.00	1250000	1000	1,250,000	1000	1,250,000	1000
6. Sloping Agricultural Land technology (SALT)	6.1 Identification of sites	No. of Barangays	CASO				1		2		2
	6.2 Identification of farmer cooperators	No. of farmer cooperatives					15		2		2
	6.3 Orientation of farmer-beneficiaries for contour farming	Farmer-beneficiaries oriented		CASO	150,000	50000	25	50,000	40	50,000	40
	6.4 Procurement of Planting Materials	Planting materials delivered	CASO	CASO	500,000	200000		150,000		150,000	
	6.5 Training on Organic Agriculture	Farmer-beneficiaries trained	CASO	CASO	150,000	50000		50,000		50,000	
	6.6 Lay-outing, Clearing of the area, establishment of demo-farm	Area of demo-farm established	CASO	CASO	150,000	50000		50000		50000	
	6.7 Monitoring of established demo farm	No. of hectares of demo farm established	CASO	CASO	150,000	50000	1	50000	2	50000	2
<b>Outcome 3: Increased disaster resilience of infrastructure systems</b>											
1. Passive Mitigation Measures	1.1 Conduct of Geohazard identification survey/ EGGAR* of housing projects relocation sites and resettlement sites pursuant to DENR Admin Order No. 2000-28.	No. of sites assessed	CEO/ CDRRMO/ MGB		-	-	-	ANA		ANA	ANA

	1.2 Implementation of RA 9514 re: Construction and Compartment-mentation (PD 1096)	1.2.1. No. of Fire Safety Inspection Certificate issued within 3 and 1/2 days upon issuance of inspection order	BFP	BFP	-	-	1800	-	1800	-	1800
		1.2.2. No. Of inspected BPLO Registered establishments	BPLO	BPLO	-	-	1800	-	1800	-	1800
	1.3 Imposition of penalties for non-conformance of Fire Code.	No of establishments issued with Notice To Correct Violations and penalized	BFP								
	2. Active Mitigation Measures	2.1 Implementation of the Fire Code: Installation of fire protection engineering features and safety audits. -	No. of Business Establishments Inspected	BFP	BFP	-	-	1800	-	1800	-
No. of Business Establishments issued with Fire Safety Inspection Certificate			BFP	BFP	-	-	1800	-	1800	-	1800
2.2 DepEd Project ASSIST: structure integrity and fire safety audit.		No of Schools compliant to fire safety regulations	BFP	BFP	-	-	36	-	36	-	36
		No of school buildings inspected	CEO	BFP	-	-	36	-	36	-	36

	2.3 Provision of Rain Water Collectors in every School Site.	No of Schools provided with rain Water Collectors	CEO								
	2.4 Expanded programs for immunization	no of vaccines distributed/ allocated	CHO	CHO	8,400,000.00	2,300,000	35,906	2,800,000	43,087	3,300,000	54,644
	2.5 Implementation of National Annual Maintenance and Repair Week (BRIGADA ESKWELA)	No of BRIGADA ESKWELA conducted	DepED	-	Voluntary service	-	-	-	-	-	-
	2.6 Conduct of structural audit in public and private facilities	No. of public facilities audited	CDRRMC	LDRRMF							
<b>Outcome 4: Community based and scientific DRRM and CCA Assessment, mapping, analysis and monitoring are conducted and / or improved.</b>											
1. DRRM and CCA assessment and mapping tools	1.1 Utilize CBDRRM check-listing and profiling.	Brgys. Conducted with CBDRRM check profiling	CDRRMO /DILG	LDRMMF / TF			64		64		64
2. Maintenance of CITY database of hazard and risks elements information	2.1 Data Collection and Data banking of risks elements information.	No of BARANGAYS database on risk elements maintained.	CDRRMO	LDRMMF / TF	200,000.00		64	100,000	64	100,000	64
	2.2 Database of E-hazmap (per hazard)	No of Database of e-hazmap maintained.	CDRRMO	-	-	-	6	-	6	-	6

## City DRRM Plan **2020 - 2022**

3. Vulnerability and risk assessment	3.1 Capacity building on VRA	No of trainings conducted on VRA	CDRRMO	LDRMMF	1,500,000.00	500000	28	500000	18	500000	18
	3.2 Production/Publication of VRAs Maps	No of Maps produced	CDRRM/MGB	LDRMMF	1,000,000.00	500000	64	250,000	64	250,000	64
	3.3 Sharing / turnover of risk database to Barangays	No of Database turned over	CDRRMO				-		1		1
4. Information and Communication Technology (ICT) System Enhancement	4.1 Info sharing thru website	Number of web portal maintained	CPDO	LDRMMF							
	4.2 Info exchange thru social media e.g. facebook	Number of social media maintained	CDRRMO				1		1		1
	4.3 Dissemination of advisories of Thunderstorm or Rainfall Warning System (TSTM/RWS) in Sorsogon City	Number of advisories issued thru No. Of text messages sent	CDRRMO	-	-		ANA		ANA		ANA
5. Geohazard survey assessment	5.1 geo-hazard survey and assessment	% of Barangay Hazard Maps generated	CDRRMO/MGB	-	-	-	98 %		100 %		100 %
	5.2 Provision/ dissemination of geohazard maps to Barangays	% of Barangay provided with hazard maps	CPDO	LDRMMF / TF	105,000.00	35,000.00	100%	35,000.00	100 %	35,000.00	100 %
6. Tropical cyclone information and damage evaluation	6.1 Investigative reports.	No. of investigative reports prepared.	CDRRMO				ANA		ANA		ANA
	6.2 Document disaster damages	No. of disaster-damaged-evaluated.	CDRRMO				ANA		ANA		ANA



Outcome 5: Communities have access to effective and applicable disaster risk financing and insurance											
1. Financing facilitation	1.1 Packaging of proposals -	proposals packaged as the need arise	CBO	-	-	-	100 %	-	100 %	-	100 %
2. Availability of currency requirement of Banks and GFIs	2.1 Uninterrupted operations during currency movements.		CTO	-	-	-	100 %	-	100 %	-	100 %
	2.2 Maintain a sufficient buffer stock of currency -	Sufficient buffer stock of currency maintained	CTO	-	-	-	100 %	-	100 %	-	100 %
3. Maintenance of Business Continuity Plan	3.1 Conduct of periodic updating of business continuity plan.	updating periodically, table top exercise	BPLO	-	-	-	100 %	-	100 %		100 %
4. Monitoring and Control of the proliferation of counterfeit notes	4.1 Conduct information drive on stakeholders -	No. of information drives conducted.	CTO	-	-	-	100 %	-	100 %	-	100 %
5. Insurance of government buildings.	5.1 Inventory of all government buildings.	No. of government building insured	CTO	-	-	-	100 %	-	100 %	-	100 %
Outcome 6: End-to- End monitoring system (monitoring and response) , forecasting and early warning are established and/or improved.											
1. Hydromet stations	1.1 Monitoring and maintenance of hydromet stations.	No. of hydromet stations monitored	CDRRMO				2		2		2
	1.2 Alarm Stations	1.2.1 Request for Alarm station to DOST-ASTI thru DOST-V	CDRRMO	DOST	500,000.00			250,000.00	1	250,000.00	1
		1.2.2 Assist in installation of Alarm Station with Fence and pedestal	CDRRMO	DOST			1		1		1

2. ICT and SMS-based Early Warning System	2.1 Sending of early warning information via SMS.	No. of SMS-based early warning information disseminated.	CDRRMO				ANA		ANA		ANA
---	---	--	--------	--	--	--	-----	--	-----	--	-----

Thematic Area 2: Disaster Preparedness

OVER-ALL RESPONSIBLE AGENCY: DILG

LEAD OFFICE: CDRRMO

OUTPUT	ACTIVITIES	PERFORMANCE INDICATOR	RESPONSIBLE AGENCIES	FUND SOURCE	FUNDING REQUIREMENT	TIMELINE					
						2020		2021		2022	
						BUDGET	TARGET	BUDGET	TARGET	BUDGET	TARGET
OUTCOME 7: Increased level of awareness and enhanced capacity of the community to the threats and impacts of all hazards											
A comprehensive and inclusive local DRRM IEC program developed and implemented	Collation of data from PAGASA, PHIVOLCS, DENR-MGB, NAMRIA, DOST, DILG, OCD	Data collected and consolidated.	CDRRMO	GF/ DRRM Fund/ TF					year-round		year-round
	Reproduction of inclusive IEC Materials on DRRM-CCA (Posters, Flyers, Pamphlets, Video Clips, Others)	IEC materials on DRRM-CCA produced/ reproduced	CDRRMO	DRRM Fund	1,000,000.00			500,000	64 brgys	500,000	64 brgys

	Dissemination of IECs to communities through any and all available media (including social media)	IEC disseminated to the various communities via various available media	CDRRMC	DRRM Fund				year-round		year-round		year-round
	Conduct of IECs through seminars/forum/lectures/ advisories	Seminars/Forum/ Lectures/ advisories conducted	CDRRMC and partners	GF/ DRRM Fund	3,000,000.00	1,000,000	year-round	1,000,000	year-round	1,000,000	year-round	year-round
	Installation of permanent signages of different hazards including man-induced hazards	Multi-Hazards warning signages installed in various hazard prone areas	CDRRMO, CEO	DRRM Fund	500,000.00			200,000	8 landslide-risk brgys	300,000	16 tsunami-risk brgys	
	Observance of the National Disaster Consciousness Month (NDCM-July)	NDCM observed through the conduct of DRRM skills Olympics and related activities	CDRRMC	DRRM Fund (TF)	150,000.00	50,000	1	50,000	1	50,000	1	1
<b>OUTCOME 8: Communities are equipped with necessary skills and capability to cope with the impacts of disaster.</b>												
Increased understanding and application of risk reduction measures and better prepared communities	Conduct of citywide quarterly Earthquake and Fire Drills	Simultaneous Citywide Earthquake and Fire Drills involving various partners and stakeholders conducted	CDRRMC	DRRM Fund	300,000.00	100,000	4	100,000	4	100,000	4	4

## City DRRM Plan 2020 - 2022

	Basic Training for First aid and Basic Life Support, SUB National PHEMAP, infant feeding in emergency, NIE, SPEED, MHPSS, WASH in Emergencies, MISP, MDM	Basic Training for First aid and Basic Life Support, SUB National PHEMAP, infant feeding in emergency, NIE, SPEED, MHPSS, WASH in Emergencies, MISP, MDM conducted	CDRRMC	DRRM Fund	1,500,000.00	500,000	year-round	500,000	year-round	500,000	year-round
	Conduct of skills training on BERT, partners and stakeholders	Skills training on BERT conducted.	CDRRMC	DRRM Fund	1,000,000.00			500,000	32 brgys	500,000	32 brgys
	Provide DRR equipment to BERTs	DRR equipment provided to BERTs	CDRRMO	DRRM Fund							
	Conduct of yearly BERT Skills Olympics	Yearly BERT Skills Olympics conducted.	CDRRMC	DRRM Fund							
	Conduct of trainings on WASAR	WASAR Trainings conducted.	CDRRMC	DRRM Fund	100,000.00			100,000	1		
	Develop the city database using EDM Geomapper	City database using EDM developed	CDRRMO	DRRM Fund	500,000.00			500,000	1		

## City DRRM Plan 2020 - 2022

	Conduct hands on training in the maintenance/ operation of search and rescue equipment	Trainings in the maintenance/ operation of search and rescue equipment conducted.	CDRRMC	DRRM Fund/ TF	100,000.00	100,000	1				
DRRM is mainstreamed and taken into consideration in decision making	Adopt DRRM-CCA policies and collate issuances by agencies	DRRM-CCA policies and issuance by authorized agencies collated and adopted.	CDRRMO	DRRM Fund							
	Develop MOAs with SCWD, SORECO, NFA, Supermarkets, Pharmacy,	MOAs with SCWD, SORECO, NFA, Supermarkets, Pharmacy, developed and entered into.	CDRRMO	DRRM Fund /TF	25,000.00			25,000			
Sustained DRRM education and research through permanent training institutions	Coordinate with DRRM-CCA training institutions for trainings and research programs	DRRM-CCA training institutions coordinated	CDRRMO	GF/ DRRM Fund /TF	100,000.00	100,000					

Increased awareness of students through DRRM and Climate proofing of educational materials and equipment	Incorporate DRRM-CCA in basic education and ALS training sessions for schools (public and private)	DRRM-CCA incorporated in the basic education and ALS training sessions for schools (public and private)	DepEd	SEF							
	Conduct of DRRM-CCA education and ALS training sessions for schools (public and private)	DRRM-CCA training sessions conducted	CDRRMC	SEF/ DRRM Fund							
<b>OUTCOME 9: Increased DRRM and CCA CAPACITY of BDRRM Committee and CDRRM Offices at all Levels</b>											
Self-reliant and operational BDRRM Councils	Conduct assessment, monitoring and evaluation of BDRRM Councils	Assessment, monitoring and evaluation of BDRRM Councils conducted.	CDRRMO	DRRM Fund / TF	200,000.00	100,000		50,000		50,000	
Fully-functioning, adequately staffed, sufficiently equipped and financially capable local DRRM Offices	Institutionalization of City DRRM Office	City DRRM Office institutionalized	CDRRMO	GF							
	Repair / Improvement of DOpCen Building	Repair DOpCen completed	CEO	DRRM Fund	2,000,000.00	2,000,000					
	Stockpiling of food and non-food relief goods and inventory of resources to include assistive devices and mobility aides for PWD and older persons	Resources (food & non-food) including assistive devices and mobility aides for PWD and older persons stockpiled and accounted for.	CDRRMC	DRRM Fund	15,000,000.00	5,000,000	quarterly	5,000,000	quarterly	5,000,000	quarterly



## City DRRM Plan 2020 - 2022

	Procurement of Communication Equipment	Communication equipment procured and registered	CDRRMO	DRRM Fund / TF	2,500,000.00	2,500,000	64 brgys				
	Procurement of Modular tents	Modular tents procured	CDRRMO	DRRM Fund	4,000,000.00	2,000,000	64 brgys	1,000,000	64 brgys	1,000,000	64 brgys
	Acquisition/ Provision of necessary equipment/ paraphernalia including protective gears and tools for Early Warning	Necessary equipment/ paraphernalia including protective gears and tools for Early Warning provisioned and acquired.	CDRRMO	DRRM Fund	3,500,000.00	1,500,000		1,000,000		1,000,000	
	Procurement & Installation of Public Address System as Early Warning System	Installed EWS in barangays	CDRRMO	DRRM Fund	2,000,000.00	2,000,000					
	Installation of audio-visual equipment at the DPR training hall	DPR training hall installed with audio-visual equipment	CDRRMO	DRRM Fund	1,000,000.00	1,000,000					
Recognized BLGUs with exemplary DRRM practices	Recognizing Best Brgy DRRM Practice	Best DRRM Practices acknowledged and emulated.	CDRRMC	DRRM Fund	200,000.00			100,000		100,000	
<b>Outcome 10. Developed and implemented comprehensive local preparedness and response policies, plans and systems</b>											
Enhanced preparedness and response strategies,	Enhancement of standard manual of operations for OPCEN	Standard manual of operations for OPCEN enhanced.	CDRRMC	DRRM Fund / TF	50,000.00			50,000	1		

## City DRRM Plan 2020 - 2022

including coordination mechanisms and infrastructure	Enhancement of LDRRM Plan, Contingency Plan & LCCAP	Contingency Plan prepared	CDRRMC	DRRM Fund/TF	100,000.00	100,000					
	Drafting of Guidelines for Relief Augmentation	Guidelines for Relief Augmentation drafted and prepared.	CDRRMC	DRRM Fund	50,000.00			50,000	1		
	Repair and Construction of Evacuation Centers in Barangays	Evacuation Centers in Barangays constructed.	CEO	Grants / DRRM Fund	30,000,000.00	10,000,000		10,000,000		10,000,000	
Better prepared communities	Extend Technical assistance on the formulation of the BDRRMP & CP	Technical assistance on the formulation of the BDRRMP & CP given.	CDRRMO	DRRM Fund / TF	500,000.00	500,000					
	Conduct of family and community based disaster preparedness sessions	Family and community based disaster preparedness roll-out sessions conducted.	CDRRMO	DRRM Fund / TF	1,000,000.00			500,000	64 brygs	500,000	64 brygs
	Conduct training on CCCM and evacuation	Training on CCCM and evacuation conducted.	OCD, CDRRMC	DRRM Fund	200,000.00			200,000	1		
	Prepare Localized Hazard Mapping	Localized Hazard Mapping printed.	CDRRMO	DRRM Fund	500,000.00	500,000	64 brygs				

## City DRRM Plan 2020 - 2022

Integrated operations and essential services ensured	Establish Coordination/ Partnership with the PPA & prepositioning of relief goods at the port for standees'	Coordination/ Partnership with the PPA & prepositioning of relief goods at the port for standees' established.	CSWD, BDRRMC, CDRRMC	DRRM Fund	200,000.00			100,000	ANA	100,000	ANA
<b>Outcome 11. Strengthened partnership and coordination among all key players and stakeholders</b>											
Partnership arrangements among stakeholders established	Updating of DRR-CCA database and directories	Directories updated.	CDRRMO	DRRM Fund			year-round		year-round		year-round
	Formulation of coordination mechanisms and guidelines for partnership arrangements of the four thematic areas	Coordination mechanisms and guidelines for partnership arrangements formulated.	CDRRMC	DRRM Fund	100,000.00			100,000			

### THEMATIC AREA 3 - DISASTER RESPONSE

**OVER-ALL RESPONSIBLE AGENCY:      DSWD**

**LEAD OFFICE: CSWDO**

OUTPUT	ACTIVITIES	PERFORMANCE INDICATOR	RESPONSIBLE AGENCIES	FUND SOURCE	FUNDING REQUIREMENT	TIMELINE					
						2020		2021		2022	
						BUDGET	TARGET	BUDGET	TARGET	BUDGET	TARGET
Outcome 12: Well-established disaster response operations											
Incident Command System In-Place	Provisions of Equipment for different	Necessary Equipment were provided for each teams	CDRRMO,	LDRRM Fund	500,000			250,000		250,000	

	response team under ICS											
	Activate the OPCEN and ICS System	OPCEN and ICS were activated										
Coordination System for Efficient Flow of Relief Operations and Coordinate with BLGU	Utilization of Two (2) Satellite phones.	Satellite phones utilized	CDRRMO	LDDRM Fund	100,000			100,000				
	Coordinate with BLGU thru Satellite Phones and Base radios Regarding passable routes	Passable routes in every barangays were coordinated with partners										
	Conduct inspection of routes to identified safe areas and alternate roads for safe and efficient passage	identified safe areas / routes inspected										
	Coordinate with the status of National Road Network and/or alternate routes maybe needed for relief operations	Coordinated status of National Road network and alternate roads that is passable										
	Provide traffic control and security	traffic control and security provided	PNP									

## City DRRM Plan 2020 - 2022

Protocols and Logistics for Communication	Implementation of Guidelines and manuals re: Communication Protocols and Logistics	Communication Protocol Manual Implemented	CDRRMO								
Relief Distribution Points	Conduct of Rapid Disaster and needs assessments	RDANA conducted	CDRRMC	LDRRM Fund / TF	150,000	50,000		50,000		50,000	
	Consolidation of RDANA	RDANA reports consolidated	CSWD								
	Coordination of security of relief goods per designated areas	Security of relief goods coordinated with the BLGUs	PNP								
Family Access Cards Distributed to BLGUs and Utilized as Data Base for Resources Allocation and Provision of Basic Health Services	Inventory of qualified recipients of Family Access Cards	Qualified recipients of FAC identified	CSWD	GENERAL FUND (CSWD)							
	Distribution of FAC.	FAC distributed			200,000	100,000		50,000		50,000	
	Validation of Updated Community Based Management Information System for qualified recipients without FAC	CBMIS validated									

## City DRRM Plan 2020 - 2022

Readiness of Response Mechanism s	Procurement of heavy equipment and other disaster response machineries	Heavy Equipment and Machineries procured	CDRRMO	LDRRM Fund	75,000,000	25,000,000		25,000,000		25,000,000	
Mobilization of Volunteers (Relief Packing and Distribution )	Activation of Volunteers	Volunteers activated	CSWD,	LDDRM Fund							
	Repacking of relief goods for distribution	relief goods repacked ready for distribution			15,000,000	5,000,000		5,000,000		5,000,000	
	Monitoring of Repacking of relief goods	Repacking of relief goods monitored									
	Transportation and security of Relief goods per designated areas	Relief goods transported safely			150,000	50,000		50,000		50,000	
	Documentation of Relief distribution	Relief Distributions Documented									
	Submission of Relief Distribution Reports to CDRRMO.	Relief Distribution Reports Submitted									
Outcome 13: Adequate and prompt assessment of needs and damages at all levels											
CDRRMCs utilize the latest DANA tools/ REDAS, IOM	Utilization of DANA tools and tracking of displaced population and missing persons.	DANA tools utilized	CDRRMO								

Tracking of Displaced Population/ Missing Children-for an integrated assessment to local and national councils.	Validates and analyze reports collected	Reports were validated and analyzed									
	Disseminate information/ assessment to concerned agencies	Assessment Disseminated									
Activation of Assessment Teams to undertake data gathering on Affected population - Gender, Age, Segregation, Vulnerable Sector (PWD's, SNCs, SCs, Pregnant and Lactating Mothers)	Activation of Assessment teams	Assessment teams activated	CSWD								
	Activation and deployment of Inspectors/ Assessment teams on Assigned Areas	Inspectors and assessment team deployed per AOR for data gathering	CSWD	CSWD	150,000	50,000		50,000		50,000	
	Data gathering and assessment on affected population	Data gathered and assessed	CSWD								
	Classification of affected population per sector	affected population classified	CSWD								
	Submission of Final Assessment Reports to concerned agencies	Final Assessment Reports Submitted	CSWD								



# City DRRM Plan | 2020 - 2022

Food and Water Requirement viz a viz Source and Population	Execution of MOA on access to potable drinking water with Sorsogon City Water District	Sorsogon LGU and Sorsogon City Water District MOAs executed	CDRRMO, SCWD								
	Execution of MOA with private business sectors (grocery/department stores)	MOA with private business sectors executed		LDRRM Fund							
Oil pollution Control/Oil Spill/Damage to Marine Environment	Activation of Oil Spill Contingency Plan of PCG and Coordinate with BLGU	Oil Spill contingency plan Activated	Spiller, PCG, LGUs								
	In-House Mobilization of MARPOL Response resources	MARPOL Response Resources Mobilized	Spiller, PCG, LGUs								
	Submission of Post Operation Report to Concerned agencies	Post Operation Report Submitted	PCG								
<b>Outcome 14</b>	<b>Integrated and coordinated Search, Rescue and Retrieval (SRR) capacity</b>										
Develop a system for SRR	information gathering of essential elements of SRR	Essential Information for SRR gathered	CDRRMC								

	Activation, briefing and deployment of SRR Operation team	SRR Operation teams Activated									
	Conduct actual operation of SRR	Actual operation conducted		LDRRM Fund / TF	450,000	150,000		150,000		150,000	
	Documentation of Incidents and SRR operation	SRR operation Documented									
	Dissemination of information to the families of the victims	appropriate Information disseminated to families of the victims	CSWD								
	Setting up of proper mass graves, holding areas for the cadavers and religious rites	Set up of proper mass graves, holding areas for the cadavers and religious rites	CDRRMC		150,000	50,000		50,000		50,000	
	Submission of Post Operation Reports	Post Operation Reports submitted	CDRRMC								
<b>Outcome 15</b>	<b>Evacuated safely and on time affected communities</b>										
Public Information System	Setting up Public Information Desks/ Posts	Set up Public Information Desks/ Posts	CDRRMC								
	Activation of Public Information Post in Evacuation areas	activated Public Information Desk									

	Validate information / data gathered	Information / data gathered validated									
	Dissemination of correct information to the public	information to the public disseminated									
Logistics for Mobilization	Facilitate of Logistics such as vehicles for transportation of personnel, volunteers, medicines, relief and other supplies in isolated areas	Logistical necessities provided	CDRRMO	LDRRM Fund / TF	3,000,000	1,000,000		1,000,000		1,000,000	
	Transportation of personnel, volunteers, medical, relief and other supplies by air, water and land especially	Identified affected areas provide with immediate assistance that are addressed			3,000,000	1,000,000		1,000,000		1,000,000	
Outcome 16: Temporary shelter needs are adequately addressed											
Accessible and safe evacuation facilities	Coordinate with the BLGU and other Concerned agencies regarding accessible and safe evacuation centers.	affected families provided with safe evacuation facilities (Modified SPHERE application)	CDRRMO								

	Activation of evacuation centers, temporary shelters, inventory and listing of families per evacuation centers	ECs, temporary shelters activated									
	Transportation of Evacuees / Displaced Families to Evacuation Facilities	Displaced Families to Evacuation Facilities transported		LDRRM Fund / TF	1,500,000	500,000		500,000		500,000	
	Monitoring of evacuation facilities and evacuees	facilities and evacuees monitored		LDRRM Fund/ TF	1,500,000	500,000		500,000		500,000	
ECs with basic facilities for "Child Friendly Spaces, Breastfeeding Area, Area for Senior Citizens, Compliant to BP 344, Gender Sensitive	Assessment of ECs with basic facilities.	ECs with basic facilities assessed.									
	Deployment of Health / Social workers in ECs	Health / Social workers in ECs deployed		CSWD							
	Classification of special needs and concerns of women, children and those persons with disability according to priorities.	special needs and concerns of women, children and those persons with disability according to priorities classified	CSWD, CHO								

Comfort Rooms and Bath Areas”	Attend to the special needs and concerns of women, children and those persons with disability	special needs and concerns of women, children and those persons with disability attended									
	Monitoring and evaluation of ECs with basic facilities	ECs with basic facilities monitored and evaluated									
	Submission of M/E reports to CDRMO	M/E reports submitted									
Safe Area for Livestock of Displaced population	Identification of proper area for livestock of displace population	proper area for livestock of displace population identified	CVO	CVO							
	Transportation of livestock to safe areas	livestock transported to safe areas			150,000	50,000		50,000		50,000	
Outcome 17: Basic social/health services provided to affected population whether inside or outside ECs											
Medical consultatio n/ Medical Missions and Nutritional Assessmen t/ Growth monitoring promotion	Triaging of patients	Patients classified	CHO	CHO							
	Consultation and Treatment of patients	patients treated									
Nutritional Assessmen t of Children,	Conduct of weighing and growth monitoring	weighing and growth monitoring conducted	CHO								

Preg- nant Women and Lactating Mothers	Nutritional Assessment of Children, Pregnant Women and Lactating Mothers	Children, Pregnant Women and Lactating Mothers assessed for nutritional status									
	Provision of medicines and supplements	medicines and supplements provided		LDRRM Fund/ TF	1,500,000	500,000		500,000		500,000	
	Submission of OPT reports to PHO	OPT reports to PHO submitted									
Assessmen t of water quality	Information gathering on doubtful sources of water after calamities	Information gathered on doubtful sources of water									
	coordinate with the BLGU the conduct of water assessment and treatment	coordinated	CHO								
	water quality testing	water assessment and treatment conducted		LDRRM Fund/ TF	300,000	100,000		100,000		100,000	
	Reporting of Tests results of water	Tests results of water reported									
Identificatio n of Health Facilities	Conduct regular inspection for disease surveillance in evacuation center and other facilities during first 1 month after calamity.	Regular inspection for disease surveillance in evacuation center and other facilities conducted	CHO								

	Submission of Morbidity Reports to DOH per Brgy. Health Unit.	Morbidity Reports to DOH submitted									
	Investigate the occurrence if with clustering of diseases and submit IMRAD.	occurrence if with clustering of diseases and submit IMRAD investigated									
Education	Identification and classification of children according to age and level of education in ECs	Age and level of education of children classified and identified	DepEd								
	Mobilize multi-disciplinary volunteers for provisions of Psycho-Social support for calamity victims.	Volunteer are mobilized and deployed.			30,000	10,000		10,000		10,000	
	Provide Psycho-Social sessions in evacuation centers for the calamity victims and schedule shifting and adjustment of sessions in ECs.	Victims in affected areas provided with continuous Psycho-Social sessions.			30,000	10,000		10,000		10,000	



Outcome 18: Psychosocial needs of directly and indirectly affected population											
Mental Health and Psycho-Social Services	Identify mentally / psychologically depressed survivors / victims / responders	victims identified	CHO								
	Provide medical and Psycho-social interventions for the survivors, victims and responders	Medical and psychosocial interventions provided		LDRRM Fund/ TF	500,000	200,000		150,000		150,000	
	Refer to mental institutions for further mental and psychological management	patients referred									
	Tracking of families and relatives of survivors	families of survivors traced	CSWD								
	Restoring Family links	Identified missing person reunited / reconnected with families									
Minimum Initial Service Package for Reproductive Health in	Activation and setting up reproductive health facilities in ECs	RH facilities in placed	CHO	LDRRM Fund/ TF	300,000	100,000		100,000		100,000	
	Provision of RH commodities	RH commodities provided			500,000	200,000		100,000		100,000	

# City DRRM Plan | 2020 - 2022

Emergenci es	Submission of reports to PHO	Reports submitted to PHO									
Child Protection in Emergenci es	Conduct Advocacy Sessions on Child Right and Protection	Advocacy Sessions conducted	CSWD	LDRRM Fund/ TF	30,000	10,000		10,000		10,000	
	Monitoring and assessment of the status of children	Status of children monitored and assessed									
	Feedbacking on impact of advocacy to recipients	Impact of advocacy to recipients re- echoed									
Outcome 19: Coordinated, Integrated System for Early Recovery implemented on the national and local levels.											
Implement tem- porary livelihood and/or IGP such as CFW/FFW and micro enterprises	Facilitate identified recipients for livelihood programs/ Cash for Work and short term employment	identified individuals enrolled/ recipient of livelihood programs Cash for Work/ Temporary Employment facilitated	CSWD								
	Provision of Short-term employment and livelihood programs to identified recipients	Short term employment provided		LDRRM Fund/ TF	3,000,000	1,000,000		1,000,000		1,000,000	
Reconstruc tion of damaged documents - birth	Identify damaged documents such as birth	Damaged documents identified	CRO, PSA, ASSESSORS OFFICE								

certificate; land titles and etc.	certificates; land titles and etc.										
	Coordinate with concerned offices	Concerned offices were coordinated									
	Restoration of damaged documents	Identified damaged documents restored		LDRRM Fund/ TF	900,000	300,000		300,000		300,000	
<b>Outcome 20: Restoration of Lifelines</b>											
Conduct of quick damage repairs and road clearing operations; immediate restoration of lifelines such as road networks, communica tion facilities, electricity.	Communicate with the BLGU regarding the damage roads and facilities	identified damage road provided with immediate action	CEO, GSO,CPDO								
	Conduct inspection of priority road network seaports and airports needed for evacuation, rescue and relief operation	Percentage of identified dam- age road net- work facilitated	CEO, GSO,								
	Identification of alternate roads	identified alternate roads	CEO, CPDO, GSO								
	Activate Multi Sectoral Linkages for clearing operations	Multi Sectoral Linkages activated	CEO, CPDO, GSO								

## City DRRM Plan 2020 - 2022

	Inventory of resources for clearing operations and conduct of clearing operation	Identified resources available	CEO, CPDO, GSO								
	Conduct of emergency repair/ measure to make road passable	emergency repaired to make road passable	CEO, CPDO, GSO	LDRRM Fund/ TF	1,500,000	500,000		500,000		500,000	
	Request for augmentation of fund for emergency repair of priority road network	approved emergency fund requested	CEO, CPDO, GSO								

### Outcome 21: Food Security of Displaced Population

Stable price and supply of BN and PC	Activation of Local Price Coordination Council	LPCC activated	DTI, NEGOSYO CENTER								
	Prevention and Control of price ceiling of BN and PC	Price ceiling controlled									
	Price & supply monitoring of BN and PC	Price and supplies monitored									
	Imposition of penalty to violators	Penalty imposed									

Preposition s of Goods	Preparation of identified designated venues for drop off point of relief goods (emergency drop off in-case of pre designated area for drop off is not available)	Designated Venues for drop of point of relief goods established	CSWD								
	Activate Humanitarian sectors/ NGO for the rationalized distribution of relief goods and other services	Humanitarian Sectors/NGO activated									
	Coordinate with the BLGUs for the rationalized distribution of relief goods and other services in designated venues	Distribution of relief goods and other services coordinated with the BLGU		LDRRM Fund/ TF	30,000	10,000		10,000		10,000	
	Inventory of qualified recipients of relief goods and other services.	qualified recipients of relief goods and other services validated/account ed									

**THEMATIC AREA 4 - DISASTER RECOVERY & REHABILITATION****OVER-ALL RESPONSIBLE AGENCY: NEDA****LEAD OFFICE: CEO**

Output	Activity	Performance Indicator	Responsible Office	Funding Source	Funding Requirement (000)	TIMELINE					
						2020		2021		2022	
						Budget	Target	Budget	Target	Budget	Target
OUTCOME #22 : Damages, Losses, Needs Assessed											
1. Delivery of Support Services to Program Beneficiaries	1.1 Formulate criteria for selection of program beneficiaries who are from vulnerable sectors (PWD, Single Parent, Senior Citizens, Pregnant Women, Lactating Mothers, Fisherfolks, Farmers)	Criteria for selection of program beneficiaries formulated	CDRRMC	LDRRMF	15	5 (ANA)		5 (ANA)		5 (ANA)	
	1.2 Identification, selection, of beneficiaries in the affected barangays of the city based on approved criteria for selection of beneficiaries	Qualified program beneficiaries were identified and selected	CDRRMC	LDRRMF	50			25	At least 1 identification and selection process done	25	At least 1 identification and selection process done
	1.3 Identification of totally damaged houses in high risk areas with no owned lots and incapable of building own houses (informal settlers)	Totally damaged houses in high risk areas with no owned lots and incapable of building own houses (informal settlers affected) were identified	CDRRMC	LDRRMF	50			25	ANA	25	ANA

## City DRRM Plan 2020 - 2022

	1.4 Identify totally damaged houses in high risk areas with owned lots but incapable of building own houses	Totally damaged houses in high risk areas with owned lots but incapable of building houses were identified and selected	DSWD/CDR RMC/ BDRRMC	LDRRMF	50			25	ANA	25	ANA
	1.5 Updating of database for primary agricultural commodities/crops, infrastructures of the city, including CBMS	Database on primary agricultural commodities/crops, infrastructures, CBMS of the city updated	CDRRMC (Lead Agency - CPDO, CEO and CASO)	LDRRMF / CPDO	2,000			400 950	Agricultural commodities / crops and 60% (38) of 64 brgys. for	650	40% or 26 brgys for RCBMS updating
	1.6 Identification, selection of farmer / fisherfolks affected by disaster	Qualified program beneficiaries were identified and selected	CDRRMC (Lead Agency - CASO)	LDRRMF / CASO	15	5	ANA	5	ANA	5	ANA
2. Post disaster needs assessment capability building	2.1 Training on PDANA/Damages and Loss Analysis (DALA) on Agriculture for Selected and Identified Priority/Pilot Areas	Trainings on PDANA / DALA on agriculture for selected and identified priority / pilot areas were conducted	CDRRMC	LDRMMF / CASO	100			100	1 training for PDNA / DALA (CDRRMC reps. /Agri. and 34 reps. from Brgys.		
	2.2 Training on PDANA/Damages and Loss Analysis (DALA) on Agriculture for Remaining Areas	Trainings on PDANA / DALA on agriculture for remaining areas were conducted	CDRRMC	LDRRMF / CASO	100	100				100	1 training for PDNA / DALA for 30 remaining brgys
	2.3 Training of Agri. Extension Workers on PDNA	PDNA training for AEWs was conducted	CDRRMC	LDRRMF / CASO	50			50	1 training for AEWs		



3. Rapid Damage Assessment Report	3.1 Conduct of Rapid Damage Assessment Report (RADAR) on the following:	RADAR conducted on the following:	CDRRMC	LDRRMF	100			50	At least RADAR conducted	50	At least 1 RADAR conducted
	3.1.1 Buildings and Offices	3.1.1 Buildings and Offices									
	3.1.2 School buildings and classrooms	3.1.2 School buildings and classrooms									
	3.1.3 Textbooks	3.1.3 Textbooks									
	3.1.4 Furniture (desks, chairs, tables, stalls, etc.)	3.1.4 Furniture (desks, chairs, tables, stalls, etc.)									
	3.1.5 Community Learning Centers (CLCs)	3.1.5 Community Learning Centers (CLCs)									
	3.1.6 Hospitals and health facilities	3.1.6 Hospitals and health facilities									
	3.1.7 Computers	3.1.7 Computers									
	3.1.8 Fence	3.1.8 Fence									
	3.1.9 Affected teachers	3.1.9 Affected teachers									
	3.1.10 Affected Students / Learners	3.1.10 Affected Students / Learners									
	3.1.11 Internet connectivity	3.1.11 Internet connectivity									

Outcome # 23: Economic activities restored and, if possible, strengthened or expanded											
1. Delivery of Support Services to Program Beneficiaries.	1.1 Develop criteria for selection of beneficiaries (cash for work, CBLA provision of animal dispersal project, provision of farm and fishery inputs, provision of medicines for large ruminants, livelihood trainings, nego cart project)	Criteria for selection of beneficiaries developed	CDRRMC	LDRRMF	15	5	ANA	5	ANA	5	ANA
	1.2 Identification and validation of beneficiaries	Target beneficiaries identified, selected and validated based on criteria made	CASO, CSWDO	LDRRMF, CASO / CSWDO / DSWD	50	15	At least 1 identification, selection, validation process done (ANA)	15	At least 1 identification, selection, validation process done (ANA)	20	At least 1 identification, selection, validation process done (ANA)
	1.3 Provision of farm / fishing inputs e.g. veg. seeds, farming tools, fingerlings, fishing paraphernalia (fishnets, fishing vessels etc.)	Target beneficiaries provided with farm/fishing inputs,	CASO, CBO,CDRRMO, CVO	LDRRMF/ CASO/ DA	4,500.00	1,500	300 FFs (ANA)	1,500	300 FFs (ANA)	1,500	300 FFs (ANA)
	1.4 Provision of livelihood assistance (organic fertilizer and Palay subsidy) to affected farmers	Livelihood assistance provided (bags of organic fertilizer and palay seeds)	CASO / CDRRMO	LDRMMF / CASO / DA / Other Aid Agencies`	900 2,250	300 750	500 Farmers (2 sk Bokashi and 1 sk palay seeds) (ANA)	300 750	500 Farmers (2 sacks Bokashi and 1 sack palay seeds) (ANA)	300 750	500 Farmers (2 sacks Bokashi and 1 sack palay seeds) (ANA)

## City DRRM Plan 2020 - 2022

	1.5 Provision of medical assistance to affected / disaster stricken livestock (vitamin administration, castration and treatment of sick animals, conduct Artificial Insemination (AI) for large ruminants (carabao, cattle)	Quantity of Medical Assistance to affected livestock provided (no. of livestock heads served)	CVO	Calamity fund	200		ANA	100	ANA	100	ANA
	1.5 Provide Cash for work Assistance among identified qualified beneficiaries (e.g. clearing operation, street cleaning, land preparation for farming, etc.)	No. of beneficiaries who were able to access the cash for work assistance program	CSWDO, DSWD, DOLE	DSWD, DOLE	4,275	1,425	1,500 pax (Php 95/day/pax x 10 days)	1,425	1,500 pax (Php 95 /day/pax x 10 days/ (ANA)	1,425	1,500 pax (Php 95 /day/pax x 10 days/ (ANA)
	1.6 Provision of CBLA (Cash for Building Livelihood Assets) assistance among selected beneficiaries (e.g. land preparation for organic vegetable farming, planting of bamboo species for river bank stabilization, karagomoi and bariw plantation development, mangrove reforestation, agro-forestry rehabilitation, etc.)	No. of beneficiaries who were able to access the CBLA assistance	CSWDO, DSWD and CASO	DSWD, regular fund	3,975	1,325	500 pax (ANA)	1,325	500 pax (ANA)	1,325	500 pax

## City DRRM Plan 2020 - 2022

2. Technology-based livelihood projects and training for disaster affected Bicolanos.	2.1 Conduct livelihood trainings for farmers and fisherfolks (crop based and fishery-based e.g. organic vegetable production, root crops farming and processing, pili food processing; seaweeds pickles processing, etc.)	Number of trainings conducted to farmers and fisherfolks	CASO, DTI, DOLE, DSWD, TESDA	LDRRMF / CASO	450	150	ANA	150	ANA	150	ANA
3. Restore people's means of livelihood and continuity of economic activities and business	3.1 Promote and capacitate farmers for the establishment of Community-Based Seed Banking (CSB) for rice and other crops	Number of CSBs (rice and vegetable) established	CASO	LDRRMF, 20% Dev't Fund	2,000			1,000	At least 1 district (ANA)	1,000	At least 1 district (ANA)
	3.2 Provide training for seed health management and CSB establishment and management	Number of trained farmer-organizations beneficiaries on CSB and seed health management	CASO	Regular Fund	200			100	100 farmers for 2 trainings (seed health mgt. and CSB establishment and mgt.)	100	100 farmers for 2 trainings (seed health mgt. and CSB establishment and mgt.)
	3.3 Validate qualified farmer beneficiaries of Animal Dispersal Program thru screening, background checking (capacity to raise animals)	No. of farmer beneficiaries validated	CASO	LDRRMF	3,000	1,000	ANA	1,000	ANA	1,000	ANA

## City DRRM Plan 2020 - 2022

	3.4 Provide Animal Dispersal Program (swine, Cattle, Carabao, Goat) to farmer beneficiaries	Number of livestock dispersal dispersed	CASO	DA, CASO Regular fund	3,325			1,663	100 beneficiaries (25 carabao, 25 goats, 25 cow, 25 pigs) ANA	1,662	100 beneficiaries (25 carabao, 25 goats, 25 cow, 25 pigs) ANA
	3.5 Conduct livelihood trainings for small business activity (nego carts)	No. of beneficiaries trained	CSWD, DOLE, DTI	LDRRMF	70			35	30 pax	35	30 pax
	3.6 Provision of Equipment for Small Business Activity e.g NegoCart	No. of Equipment for Small Business Activity Provided	DOLE, CASO, DTI	CASO / DTI / DOLE	900			450	30 pax	450	30 pax
4. Credit facilities for affected sectors	4.1 Validate qualified Farmers / Fisherfolks / Women's Association affected by the disaster (duly registered e.g. DOLE, CDA, SEC)	No. of qualified associations who benefitted	CSWD, CASO	CSWD, MFI	1,000			500	At least 10 beneficiary organizations	500	10 beneficiary organizations
	4.2 Facilitate access to provision of harvest /post-harvest facilities to qualified Farmers Association e.g. Thresher, Tractor, Mechanical Dryer etc.	No. of FA provided	CASO, DOLE, SEC	CASO / DA	8,350			5,000	ANA	3,350	ANA

Outcome # 24: DRRM/CCA elements mainstreamed in human settlement											
1. Safe Relocation Sites	1.1 Secure affected communities from looting and ensure peace and order	Project areas secured.	PNP, Tanods, NHA	Regular fund	40	10	ANA	15	ANA	15	ANA
	1.2 Test all sources of drinking water for potability	All water sources tested for potability	CHO	Regular fund	50	10	ANA	20	ANA	20	ANA
	1.3 Removal of calamity debris which could cause injuries	Affected areas removed of debris	Engineering, CENRO	LDRRMF, Regular Fund	150	50	ANA	50	ANA	50	ANA
	1.4 Land banking/ Procurement of lands potential for socialized housing and identified areas under the CLUP/Shelter Plan	Resettlement sites to vulnerable communities identified and procured	Housing office, Engineering	Development Fund, Calamity fund	15,000			5,000	5 Has. of lot for relocation site	10,000	10 Has. of lot for relocation site
	1.5 Procurement and provision of facilities (road, drainage, power, water, communal facilities)	Relocation sites provided with basic services facilities	Housing office, Engineering NHA	National Fund	45,000			15,000	1 relocation site	30,000	2 relocation sites
2. Disaster-resilient housing designed and reconstructed	2.1 Adoption of resilient housing design/construction of units	Resilient housing design adopted	CEO	National Fund, Calamity fund, Development fund	60,000			15,000	50 units	45,000	150 units
	2.2 Research for modularization and alternative construction materials/local materials of the resilient housing design	Alternative construction materials identified and accepted / adopted	Engineering	Regular fund	200			200	1 unit sample		

# City DRRM Plan 2020 - 2022

	2.3 Adoption of green technology in the rehab of damaged infra facilities (schools, government buildings)	Green technology adopted in the rehabilitation of damaged infra facilities	DPWH, DepEd, LGUs	Regular fund	100			100	1 training on green technology adoption		
3. Self-Sufficient communities with access to basic social services	3.1 Rehabilitation of basic infrastructures (roads, power)	Damaged infrastructures repaired/rehabilitated and or improved	City Engineering, PEO, DPWH, NIA, SORECO, etc)	National Fund, Development fund,	50,000	20,000	ANA (for roads only for electrical/power system please refer to outcome 25)	15,000	ANA	15,000	ANA
	3.2 Rehabilitation of Education Facilities (day care centers etc.)	Damaged education facilities repaired/rehabilitated and improved	City Engineering, PEO, CSWDO, DPWH, NIA, etc)	National Fund, Development fund,			ANA (please refer to outcome 25 for day care center cost of repair / rehab)				
	3.3 Rehabilitation of Health Facilities (health centers, hospitals)	Damaged health facilities repaired/rehabilitated and improved)	City Engineering, PEO, DPWH, NIA, CHO, PHO, etc)	National Fund, Development fund, others	50,000	15,000	ANA (please refer to outcome 25 for the cost of rehab of health centers)	15,000	ANA	20,000	ANA



## City DRRM Plan 2020 - 2022

	3.4 Rehabilitation of Agricultural Support Facilities (irrigation canals, dams etc.)	Damaged agricultural support facilities repaired/ rehabilitated and improved)	City Engineering, PEO, DPWH, NIA, etc)	National Fund, Development fund,	15,000	3,000	ANA	6,000	ANA	6,000	ANA
<b>OUTCOME # 25: Developed and implemented comprehensive national and local preparedness and response policies, plans and systems</b>											
1. Infrastructure facilities restored &/or rehabilitated according to safety and resiliency standard.	1.1 Review and validate results of PDANA for infrastructure facilities.	Results of PDANA for infrastructure facilities reviewed and validated	CDRRMC	LDRRMC	3,000	1,000	ANA	1,000	ANA	1,000	ANA
	1.2 Incorporate the policy principle of <b>"building back better and safer"</b> for infrastructure rehabilitation, development and construction taking into consideration the need of the constituents as well as the geo hazard concerns of the city.	Guidance principle, incorporated in the local policy and standard for infrastructure rehabilitation and development	CDRRMC , CEO / SP	LDRRMC	1,000	1,000	1 policy adopted by CDRRMC				
	1.3 Prioritization of infrastructure facilities to be repaired or reconstructed based on availability of budget for the given period and the urgency which will benefit a greater number of affected population	Infrastructure facilities to be repaired had been prioritized	CDRRMC	LDRRMF	30,000	10,000	ANA	20,000	ANA	20,000	ANA

	1.4 Undertake necessary repair and or reconstruction of facilities which were prioritized by the CDRRMC	Prioritized infrastructure facilities were repaired and or reconstructed	CDRRMC	LDRRMF / Regular fund							
	1.4.1 Public School Buildings (covering 84 elementary and secondary school sites ; 95 day care centers) (as per DepEd standard design for disaster resilient school buildings)		Lead Agency - DepEd / DPWH / CEO	DepEd/ CEO / CSWDO - DSWD / DPWH and Other donor agencies	258,000 (3,000 per site)	86,000	ANA	86,000	ANA	86,000	ANA
	1.3.2 Day Care Centers (95)		Lead Agency - CEO / CSWDO	CEO / CSWDO / DSWD	4,750 (50 / day care center)	1,550 (31 sites)	ANA	1,600 (32 sites)	ANA	1,600 (32 sites)	ANA
	1.3.2 Water system facilities		Lead Agency - SCWD / CEO	CEO / SCWD / BAWASA	6,000	1,000	ANA	3,000	ANA	2,000	ANA
	1.3.3 Electrical System		Lead Agency - CEO / SORECO	CEO / SORECO - Loan from NEA	194,400	64,800	ANA	64,800	ANA	64,800	ANA
	1.3.4 Health Centers (67)		Lead Agency - CEO / CHO	CEO / DOH	13,400	4,400	ANA	4,400	ANA	4,600	ANA

## City DRRM Plan 2020 - 2022

	1.3.5 Drainage System		Lead Agency - CEO	CEO / DPWH / PEO	25,000	5,000	ANA	10,000	ANA	10,000	ANA
	1.3.6 Toilets (150)		Lead Agency - CEO / CHO	CEO / DOH	9,000	3,000	ANA	3,000	ANA	3,000	ANA
	1.4 Provision of temporary shelters / bunkhouses or shelter kits to identified / validated program beneficiaries in affected communities	Temporary shelters or shelter kits provided to identified / validated program beneficiaries in affected communities	Lead Agency - CEO / CSWDO	CEO/DP WH /DSWD	45,000	15,000	ANA	15,000	ANA	15,000	ANA
	1.5 Coordination, collaboration and partnership development with various aid agencies for the construction of permanent shelters for identified / validated and qualified program beneficiaries in affected communities	Coordinated, collaborated and built partnership with various aid agencies for construction of permanent shelters for qualified beneficiaries	CDRRMC	LDRMMF	60,000	20,000	ANA	20,000	ANA	20,000	ANA
	1.6 Construction of permanent shelters for identified / validated qualified program beneficiaries in better and safer areas ("building back better and safer")	Permanent shelters (600) constructed for qualified beneficiaries in safer areas	Lead Agency - CEO / CSWDO	CEO/ DPWH/ DSWD/ NHA and other aid agencies	186,000	11,000	44 Units at 250/ unit	87,500	350 units (ANA)	87,500	350 units (ANA)

	1.6 Develop monitoring and evaluation tools for implementation of post disaster infrastructure rehabilitation and reconstruction	Monitoring and evaluation tools for implementation of post disaster infrastructure rehabilitation and reconstruction were developed and approved	CDRRMC	LDRMMF	50	15	ANA	15	ANA	20	ANA
	1.7 Conduct monitoring and evaluation of on going or completed infrastructure rehabilitation and reconstruction	Monitoring and evaluation activities were conducted	CDRRMC	LDRMMF	90	30	ANA	30	ANA	30	ANA
2. Development permits approved within prescribed timeline	2.1 Develop standard operating procedures for permit requirements intended for repair, rehabilitation and reconstruction of infrastructure facilities prioritized based on PDANA results (speedy procedures)	Standard operating procedures for permit issuances intended for repair, rehabilitation and reconstruction of infrastructure facilities had been developed, approved and implemented	CDRRMC	LDRMMF	30	10	ANA	10	ANA	10	ANA
	2.2 Processing of permits according to prescribed timeline of proposed infrastructure projects	Permits were issued according to prescribed timeline for proposed infrastructure projects	Lead Agency - CEO	LDRRMF / CEO - Regular Fund	150	50	for government rehab projects only (ANA)	50	ANA	50	ANA

Outcome 26 - A psychologically sound, safe and secured citizenry that is protected from the effects of disasters able to restore to normal functioning after each disaster											
1. Vulnerable population provided with adequate and appropriate risk protection measures	1.1 Implementation of approved systems for appropriate risk protection measures specific to identified vulnerable sectors or at risk population (children, pregnant women, lactating mothers, single mothers, SC, SC with chronic illnesses, PWDs, others)	Approved systems for appropriate risk protection measures specific to identified vulnerable sectors or at risk population were implemented	CDRRMC	LDRRMF	120	20	3-5 risk protection systems developed and operationalized (according to identified vulnerable sectors)	50	5 or more risk protection systems operationalized	50	5 or more risk protection systems operationalized
	1.2 Develop and establish coordination, collaboration and partnership between CDRRMC and various aid agencies to provide support for the vulnerable sectors of the affected population	Coordination, collaboration and partnership between CDRRMC and various aid agencies developed and established	CDRRMC	LDRRMF	150	50	1 local coordinating unit established specific for rehab and recovery	50	1 local coordinating unit established specific for rehab and recovery	50	1 local coordinating unit established specific for rehab and recovery
	1.3 Mobilize at least 32 trained psychosocial care givers / volunteers in the communities (6 months post disaster services)	32 Trained psychosocial care givers / volunteers were mobilized	CDRRMC (lead agency - CSWDO)	LDRMMF	1,440	480		480	ANA	480	ANA
	1.4 Provide basic psychosocial support to affected high risk population	Basic psychosocial support services to affected high risk population were provided	CDRRMC (lead agency - CSWDO)	LDRMMF	300	100	ANA	100	ANA	100	ANA

## City DRRM Plan 2020 - 2022

	1.5 Develop criteria for selection of beneficiaries to be provided with special protection services (due to the sectors' being most vulnerable during a disaster event)	Criteria for selection of beneficiaries developed specific for special protection services provision	CDRRMC	LDRRMF	15	5	ANA	5	ANA	5	ANA
	1.6 Identification, selection and validation	Beneficiaries were identified, selected and validated	CDRRMC Lead Agencies: CSWDO and CHO	LDRRMF	15	5	ANA	5	ANA	5	ANA
	1.7 Provide protection services for maternal and child care support	Protection services provided to qualified indigent mothers and children (lactating mothers and their children)	CDRRMC Lead Agencies: CHO and CSWDO	LDRRMF / Regular Fund / Other Aid Agencies	120,000	4,000	ANA (2,000 lactating mothers @ 2,000 / bene)	3,000	ANA	3,000	ANA
		Protection services provided to indigent pregnant women	CDRRMC Lead Agencies: CSWDO and CHO	LDRRMF / Regular Fund / Other Aid Agencies	4,500	1,500	ANA (500 benes @ 3,000 / bene)	1,500	ANA	1,500	ANA
	1.8 Provision of protection services for elderly with chronic illnesses	Protection services provided to indigent elderlies with chronic illnesses	CDRRMC Lead Agencies: CSWDO and CHO	LDRRMF / Regular Fund / Other Aid Agencies	6,000	2,000	ANA (1,000 benes @ 2,000/bene)	2,000	ANA	2,000	ANA

	1.9 Provide training for LGU personnels, volunteers engage in response, rehabilitation and recovery efforts on PSEA and Communicating with Communities	No. of LGU personnels and volunteers trained on PSEA and Communicating with Communities	CDRRMC	LDRRMF	100			100	30 pax 2 trainings (PSEA and Communicating with Communities)		
	1.10 Develop and implement post disaster conflict management measures in the communities affected by a disaster	Post disaster conflict management measures were developed and implemented in the affected communities	CDRRMC (lead agency - CMO assisting offices LDRRMO, PNP, concerned BDRMMCs)	LDRRMF	30	10	ANA	10	ANA	10	ANA

## VII. MONITORING AND EVALUATION

THEMATIC AREA 1: DISASTER PREVENTION AND MITIGATION									
PPA	Baseline	Assumptions / Risks	Objectively Verifiable Indicators	Targets	Data Sources	Collection Methods	Frequency and Audience to Report to	OPR/ PPR	Resources Needed
Conduct of Structural Audit	City Hall; DRRM Bldg; Warehouse; Old Municipal Bldg (Bacon & Talisay); Rural Health Units; Multi-purpose Bldgs;	accuracy/ availability of CGSO & CEO inventory	No. of public facilities	10 public facilities	CGSO & CEO inventory	site inspection, formal request of inventory	Annually to DRRMC	City Engineering Office and City GSO	Administrative expenses for site inspection, office supplies for the preparation of the audit
Production of Hazard Maps	64 barangays	Updated local hazard maps	No. of hazard maps produce	64 barangays	CDRRMO	Logbook showing receipt of maps	Annually to DRRMC	CDRRMO	Supplies and materials for reproduction
Procure insurance policies for buildings and vehicles	10 buildings and 15 vehicles	Availability of fund and insurance provider	No. of buildings and vehicles	10 buildings and 15 vehicles	Inventory from CGSO	constant follow up with CGSO	Annually to DRRMC	CGSO	Administrative expenses for document preparation



THEMATIC AREA 2: DISASTER PREPAREDNESS									
PPA	Baseline	Assumptions / Risks	Objectively Verifiable Indicators	Targets	Data Sources	Collection Methods	Frequency and Audience to Report to	OPR/ PPR	Resources Needed
Conduct of DRRM seminars and trainings	64 barangays	Trained CDRRMO personnel	No. of DRRM seminars & trainings	64 barangays	CDRRMO	After activity report, Logbook showing barangay attendance	Annually to DRRMC	CDRRMO	Administrative expenses for on- and off-site seminars and trainings, office supplies, food and hotel accommodation
Purchase of DRR-related equipment, supplies and materials	Emergency Operation Center equipment, supplies and materials	Availability of funds	No. of response equipment procured	Rescue equipment , Medical supplies	CDRRMO	Logistics inventory	Annually to DRRMC	BAC, CDRRMO	Administrative expenses for document preparation
Stockpiling of relief goods (food and non-food)	64 barangays	Availability of funds	No. of food and non-food items procured	100% of household population	Inventory from CSWDO	Record of inventory from CSWDO	Annually to DRRMC	CSWDO	Administrative expenses for document preparation

THEMATIC AREA 3: DISASTER RESPONSE									
PPA	Baseline	Assumptions / Risks	Objectively Verifiable Indicators	Targets	Data Sources	Collection Methods	Frequency and Audience to Report to	OPR/ PPR	Resources Needed
Provision of relief goods (food and non-food)	64 barangays	Organized system of relief operation	No. of household	64 barangays	CSWDO	Distribution report from CSWDO	Every meeting to DRRMC	CSWDO	Administrative expenses for distribution, fuel expenses
Management of evacuation centers	4 Evacuation Centers	Availability of funds, functional evacuation management committee	No. of evacuation centers	4 multi-purpose buildings cum evacuation centers	DepEd, CDRRMO	Monitoring report from CDRRMO	Every meeting to DRRMC	CDRRMO	Administrative expenses for document preparation and site monitoring
Restoration of lifelines (communication, water and electricity)	64 barangays	Availability of manpower, funds and supplies	No. of barangays with lifelines restored	64 barangays	SCWD and SORECO II	Follow up report from SCWD and SORECO II	Every meeting to DRRMC	Sorsogon City Water District and SORECO II	Administrative expenses
Road clearing operation	64 barangays	Availability of manpower and funds	% of barangay roads cleared	64 barangays	CEO	Follow-up report from CEO	Every meeting to DRRMC	CEO	Administrative expenses, fuel expenses

THEMATIC AREA 4: DISASTER RECOVERY AND REHABILITATION									
PPA	Baseline	Assumptions / Risks	Objectively Verifiable Indicators	Targets	Data Sources	Collection Methods	Frequency and Audience to Report to	OPR/ PPR	Resources Needed
Conduct of Rapid Post Disaster Needs Analysis	64 barangays	Trained CDRRMC to conduct PDNA	% of barangays covered	64 barangays	CDRRMC team headed by CPDO and CDRRMO	Follow-up with the team	Every meeting to DRRMC	CDRRMO	Administrative expenses for monitoring, fuel expenses
Livelihood provision to farmers and fisherfolks	64 barangays	Availability of funds	No. of farmers and fisherfolks beneficiaries	64 barangays	CASO	Monitoring report from CASO	Every meeting to DRRMC	CASO	Administrative expenses for document preparation and monitoring
Reconstruction of buildings/ facilities	PDNA result	Availability of manpower, funds and supplies	No. of buildings / facilities	Public buildings / facilities	CEO	Monitoring report from CEO	Every meeting to DRRMC	BAC and CEO	Administrative expenses