
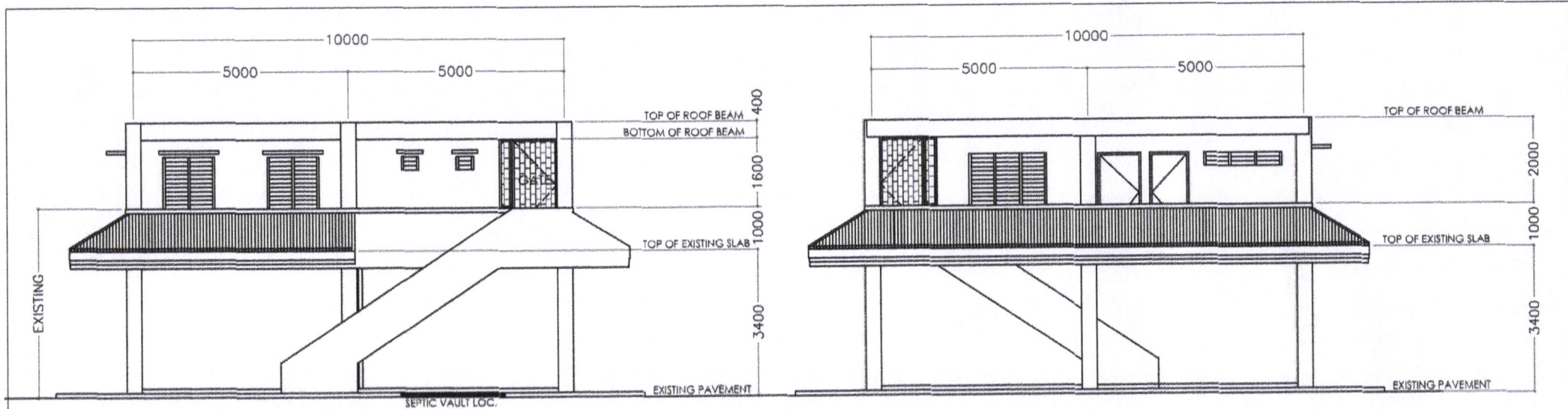


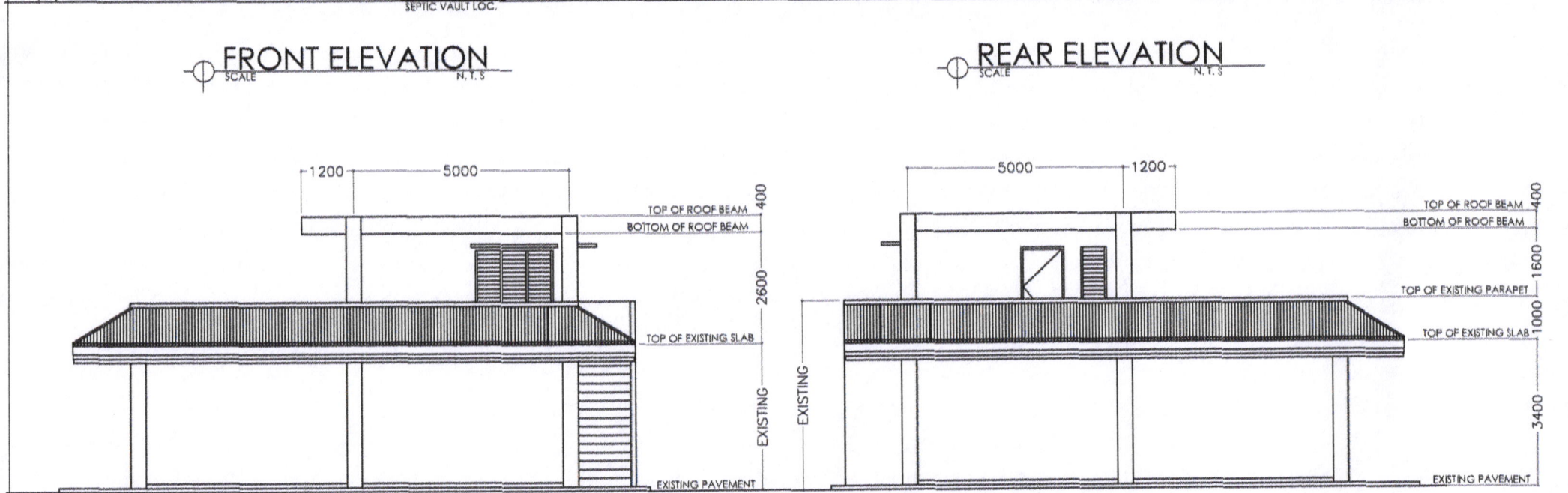
**LOCATION MAP**  
SCALE N.T.S.

 <b>SORSOGON CITY</b> <b>CITY ENGINEER'S OFFICE</b>	<b>PROJECT TITLE:</b>	<b>DRAWN BY:</b>	<b>RECOMMENDING APPRVL:</b>	<b>APPROVED BY:</b>	<b>SHEET CONTENT:</b>	<b>SHEET NO.</b>
	CONSTRUCTION OF RESCUE/SEA PATROL BOAT & BOAT SHED W/ EMBARKATION/LAUNCHING DECK - PHASE II LOC: BACON PORT & BRGY. TALISAY PIER, SORSOGON CITY	ROY M. HUBILLA <small>ENGINEERING AICE</small>	ROEL D. DOMER, CE./RMP <small>CITY ENGINEER</small>	HON. MA. ESTER E. HAMOR <small>CITY MAYOR</small>	AS - SHOWN	A - 01




FRONT ELEVATION  
SCALE N.T.S.

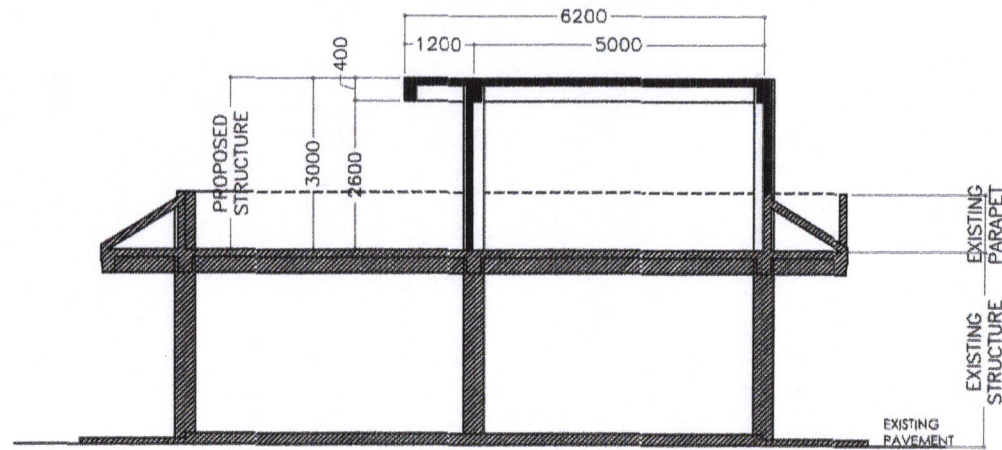
REAR ELEVATION  
SCALE N.T.S.




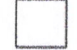
LEFT ELEVATION  
SCALE N.T.S.

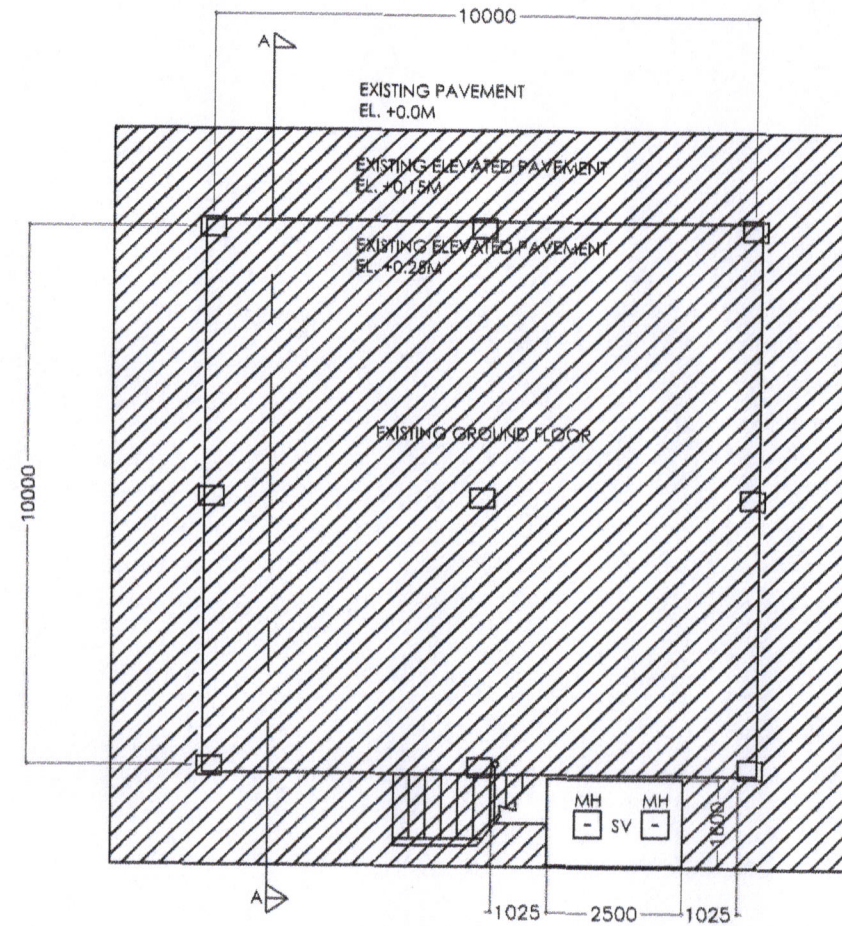
RIGHT ELEVATION  
SCALE N.T.S.

 <p>SORSOGON CITY CITY ENGINEER'S OFFICE</p>	<p>PROJECT TITLE: CONSTRUCTION OF RESCUE/SEA PATROL BOAT &amp; BOAT SHED W/ EMBARKATION/LAUNCHING DECK - PHASE II</p>	<p>DRAWN BY:  ROY M. HUBILLA ENGINEERING AIDE</p>	<p>RECOMMENDING APPRVL:  ROEL D. ROMERO, C.E./RMP CITY ENGINEER</p>	<p>APPROVED BY:  HON. MA. ESTER E. HAMOR CITY MAYOR</p>	<p>SHEET CONTENT:  AS - SHOWN</p>	<p>SHEET NO.  A - 02</p>
	<p>LOC: BACON PORT &amp; BRGY. TALISAY PIER, SORSOGON CITY</p>					

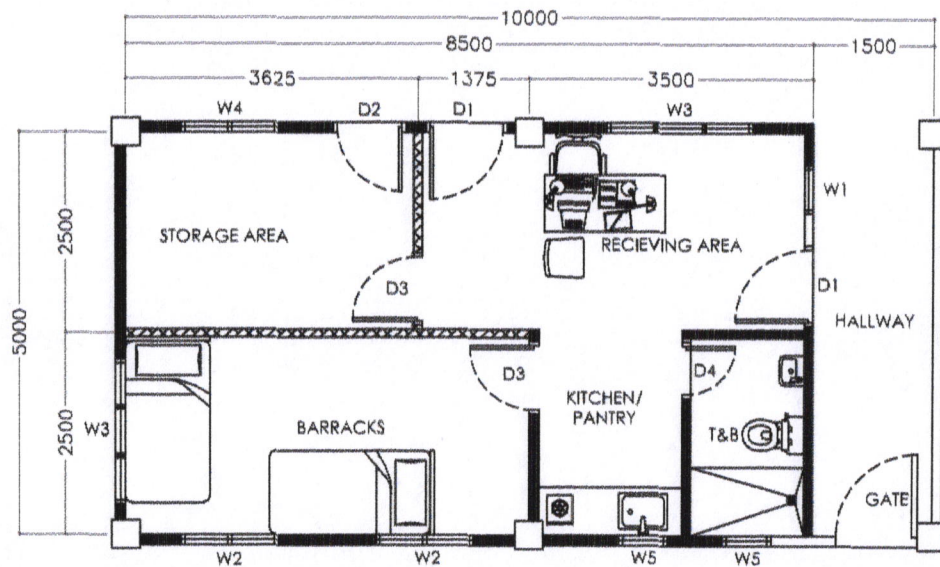




SECTION ELEVATION TRU "A-A"  
SCALE N.T.S.

NOTE:  
 - EXISTING  
 - PROPOSED




GROUND LEVEL  
SCALE N.T.S.





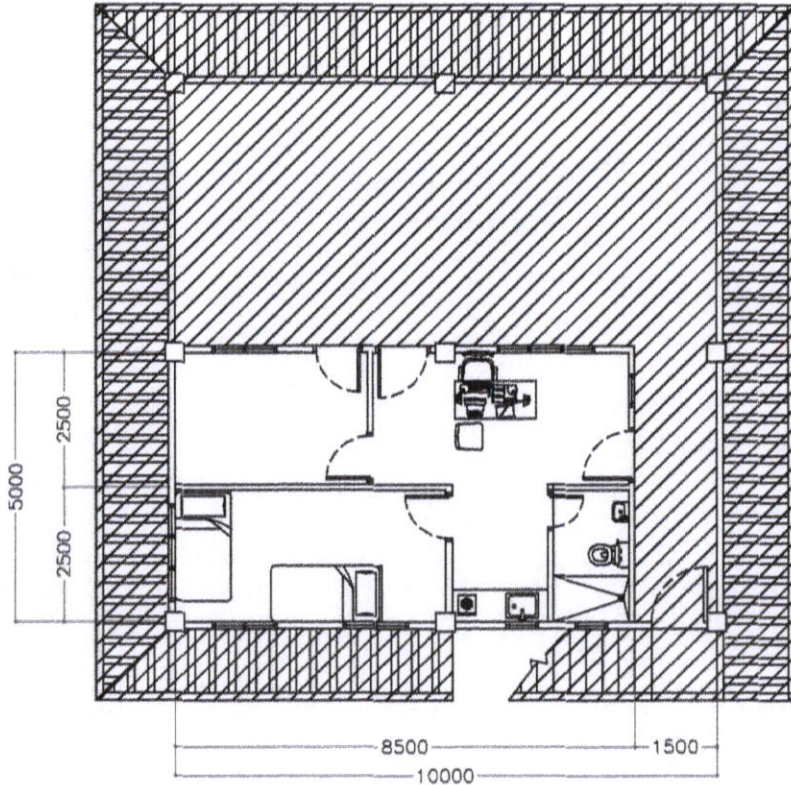
NOTE:  
 - 4" CHB WALL  
 - DRYWALL (DOUBLE WALL)

FLOOR PLAN  
SCALE N.T.S.

 <p>SORSOGON CITY CITY ENGINEER'S OFFICE</p>	<p>PROJECT TITLE: CONSTRUCTION OF RESCUE/SEA PATROL BOAT &amp; BOAT SHED W/ EMBARKATION/LAUNCHING DECK - PHASE II</p>	DRAWN BY:	RECOMMENDING APPRVL:	APPROVED BY:	SHEET CONTENT:	SHEET NO.:
	<p>LOC: BACON PORT &amp; BRGY. TALISAY PIER, SORSOGON CITY</p>	<p>ROY M. HUBILLA ENGINEERING AIDE</p>	<p>ROEL D. DOMER, C.E./RMP CITY ENGINEER</p>	<p>HON. MA. ESTER E. HAMOR CITY MAYOR</p>	<p>AS - SHOWN</p>	<p>A - 03</p>



NOTE:

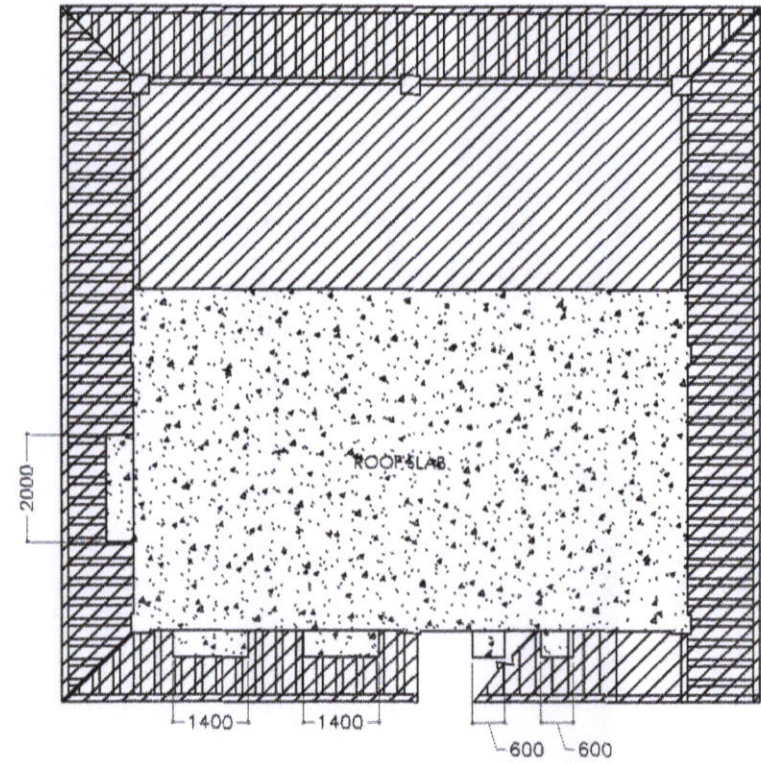
-  - EXISTING
-  - PROPOSED



SECOND LEVEL  
SCALE N.T.S.

NOTE:

-  - EXISTING
-  - PROPOSED



ROOF LEVEL  
SCALE N.T.S.



SORSOGON CITY  
CITY ENGINEER'S  
OFFICE

PROJECT TITLE:  
CONSTRUCTION OF RESCUE/SEA  
PATROL BOAT & BOAT SHED W/  
EMBARKATION/LAUNCHING DECK -  
PHASE II  
LOC: BACON PORT & BRGY. TALISAY PIER,  
SORSOGON CITY

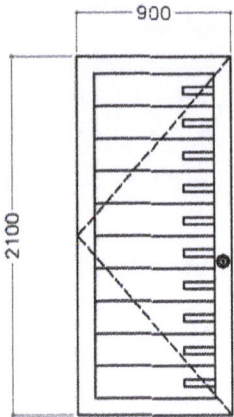
DRAWN BY:  
ROY M. HUBILLA  
ENGINEERING AIDE

RECOMMENDING APPRVL:  
ROEL D. DOMER, C.E./RMP  
CITY ENGINEER

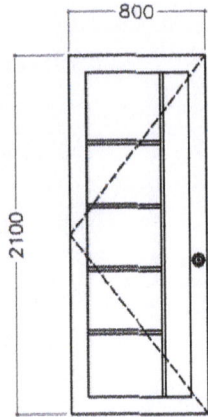
APPROVED BY:  
HON. MA. ESTER E. HAMOR  
CITY MAYOR

SHEET CONTENT:  
AS - SHOWN

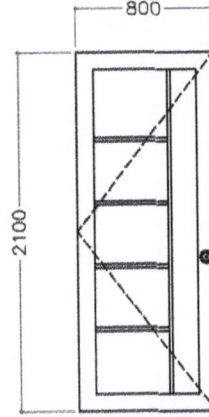
SHEET NO.  
A - 04



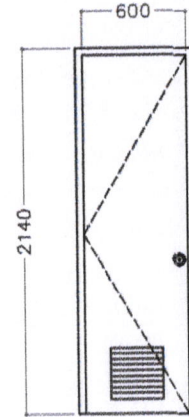
WOOD PANEL DOOR  
2 UNITS



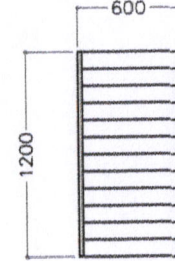
WOOD PANEL DOOR  
1 UNIT



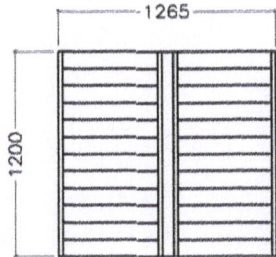
WOOD PANEL DOOR  
2 UNITS



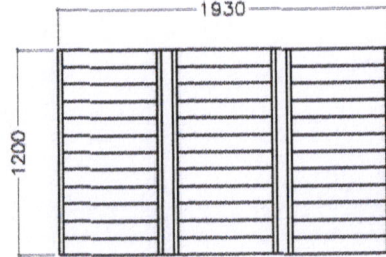
PVC DOOR W/ LOUVER  
1 UNIT



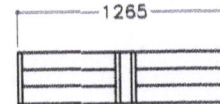
GLASS JALOUSIE WINDOW  
W/ WINDOW GRILLS  
2 UNITS



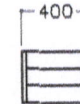
GLASS JALOUSIE WINDOW  
W/ WINDOW GRILLS  
2 UNITS



GLASS JALOUSIE WINDOW  
W/ WINDOW GRILLS  
2 UNITS



GLASS JALOUSIE WINDOW  
W/ WINDOW GRILLS  
2 UNITS



GLASS JALOUSIE WINDOW  
W/ WINDOW GRILLS  
2 UNITS



SORSOGON CITY  
**CITY ENGINEER'S  
OFFICE**

PROJECT TITLE:  
CONSTRUCTION OF RESCUE/SEA  
PATROL BOAT & BOAT SHED W/  
EMBARKATION/LAUNCHING DECK -  
PHASE II  
LOC: BACON PORT & BRGY. TALISAY PIER,  
SORSOGON CITY

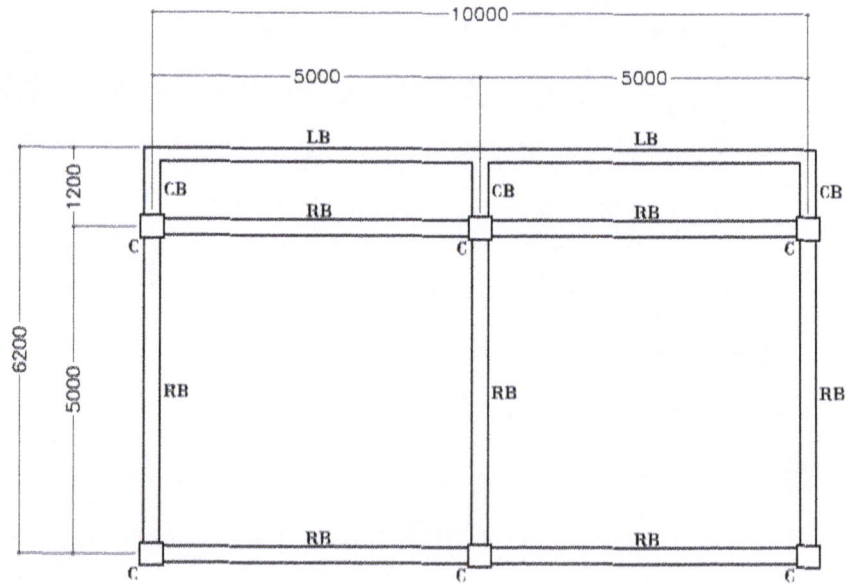
DRAWN BY:  
ROY M. HUBILLA  
ENGINEERING AIDE

RECOMMENDING APPRVL:  
ROEL D. DOMER, C.E./RMP  
CITY ENGINEER

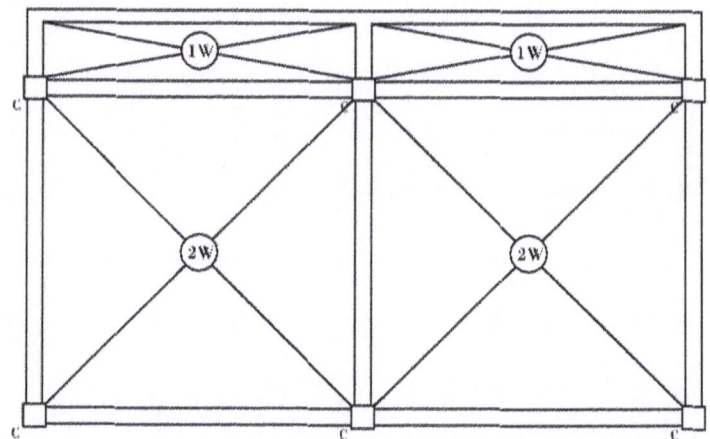
APPROVED BY:  
HON. MA. ESTER E. HAMOR  
CITY MAYOR

SHEET CONTENT:  
AS - SHOWN

SHEET NO.  
A - 05

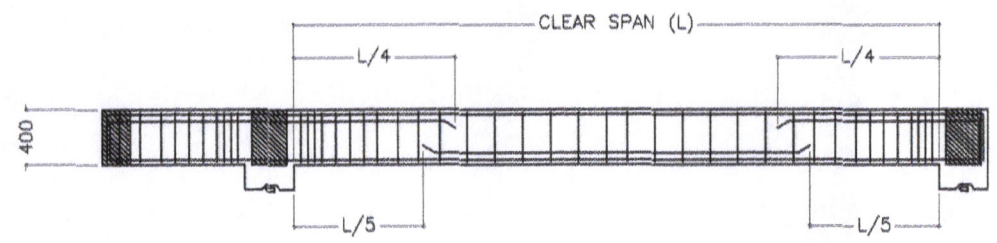


ROOF BEAM PLAN  
SCALE N.T.S.




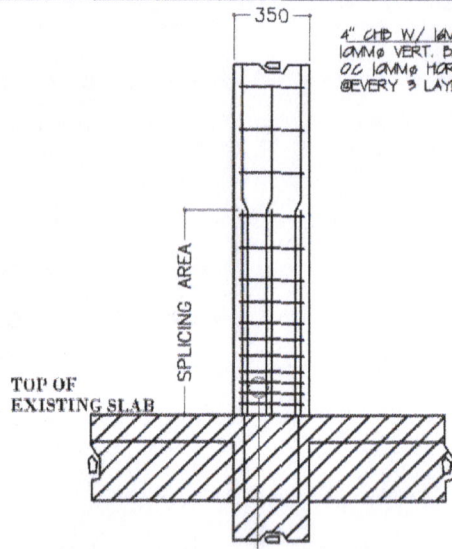
ROOF SLAB PLAN  
SCALE N.T.S.

BEAM SCHEDULE			
BEAM	@SUPPORT	@MIDSPAN	
RB 250MM X 400MM	3-16MM $\emptyset$ 2-16MM $\emptyset$ 3-16MM $\emptyset$	3-16MM $\emptyset$ 2-16MM $\emptyset$ 3-16MM $\emptyset$	10MM $\emptyset$ TIES SPACED 4@50MM, 4@100MM, 3@150MM REST @200MM OC
CB 250MM X 400MM	3-16MM $\emptyset$ 2-16MM $\emptyset$ 3-16MM $\emptyset$	3-16MM $\emptyset$ 2-16MM $\emptyset$ 3-16MM $\emptyset$	10MM $\emptyset$ TIES SPACED 4@50MM, 4@100MM, 3@150MM REST @200MM OC
LB 200MM X 400MM	3-16MM $\emptyset$ 3-16MM $\emptyset$	3-16MM $\emptyset$ 3-16MM $\emptyset$	10MM $\emptyset$ TIES SPACED 4@50MM, 4@100MM, 3@150MM REST @200MM

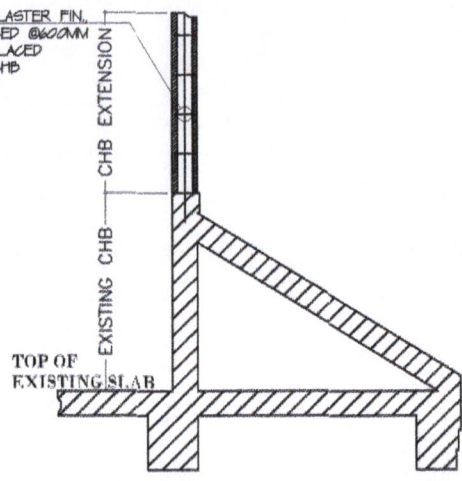


BEAM SECTION ELEVATION  
SCALE N.T.S.

 <p>SORSOGON CITY <b>CITY ENGINEER'S OFFICE</b></p>	PROJECT TITLE:	DRAWN BY:	RECOMMENDING APPRVL:	APPROVED BY:	SHEET CONTENT:	SHEET NO.
	CONSTRUCTION OF RESCUE/SEA PATROL BOAT & BOAT SHED W/ EMBARKATION/LAUNCHING DECK - PHASE II				AS - SHOWN	S - 01
	LOC: BACON PORT & BRGY. TALISAY PIER, SORSOGON CITY	ROY M. HUBILLA ENGINEERING AIDE	ROEL D. DOMER, C.E./RMP CITY ENGINEER	HON. MA. ESTER E. HAMOR CITY MAYOR		

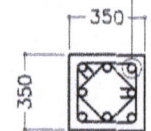


4" CHB W/ 16MM THK PLASTER FIN.  
16MM VERT. BARS SPACED @ 600MM  
OC 16MM HOR. BARS PLACED  
EVERY 3 LAYERS OF CHB



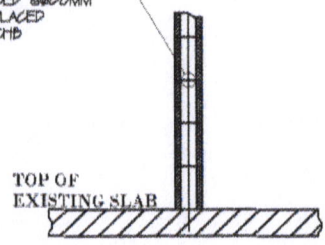
**CHB EXTENSION**  
SCALE N.T.S.

8-20MM VERTICAL BARS WITH  
16MM LATERAL TIES AND INNER  
TIES SPACED 4 @ 50MM, 3 @ 100MM,  
1 @ 150MM REST @ 200MM OC.

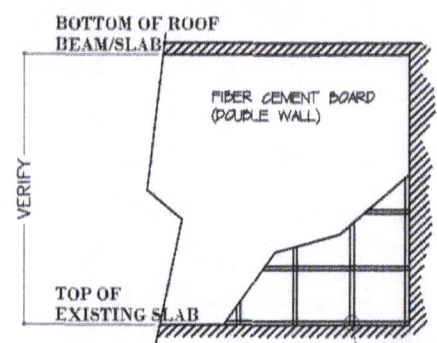


**COLUMN DETAILS**  
SCALE N.T.S.

4" CHB W/ 16MM THK PLASTER FIN.  
16MM VERT. BARS SPACED @ 600MM  
OC 16MM HOR. BARS PLACED  
EVERY 3 LAYERS OF CHB

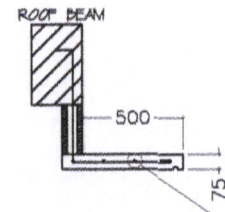


**CHB WALL DETAIL**  
SCALE N.T.S.



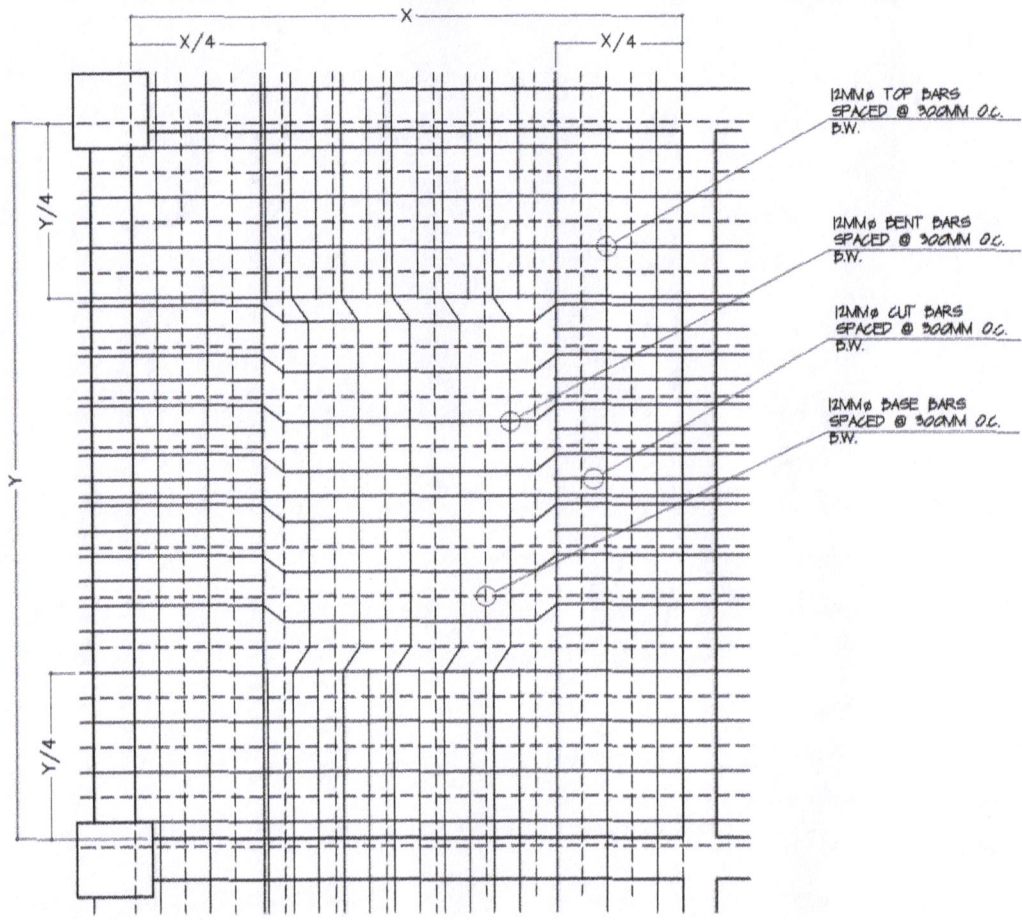
**DRYWALL**  
SCALE N.T.S.

METAL TRACK &  
STUDS SPACED  
@ 600MM BOTHWAYS  
OC.



**CANOPY**  
SCALE N.T.S.

4-12MM LONG BARS  
SPACED EVENLY OC W/  
12MM VERTICAL BARS  
SPACED @ 200MM OC



16MM BENT BARS  
SPACED @ 300MM OC.  
D.W.

16MM TOP BARS  
SPACED @ 300MM OC.  
D.W.

CONCRETE COVER:  
25MM

16MM BASE BARS  
SPACED @ 300MM OC.  
D.W.

**TWO WAY SLAB PLAN & SECTION**  
SCALE 1:30MTS



SORSOGON CITY  
**CITY ENGINEER'S  
OFFICE**

PROJECT TITLE:  
CONSTRUCTION OF RESCUE/SEA  
PATROL BOAT & BOAT SHED W/  
EMBARKATION/LAUNCHING DECK -  
PHASE II  
LOC: BACON PORT & BRGY. TALISAY PIER,  
SORSOGON CITY

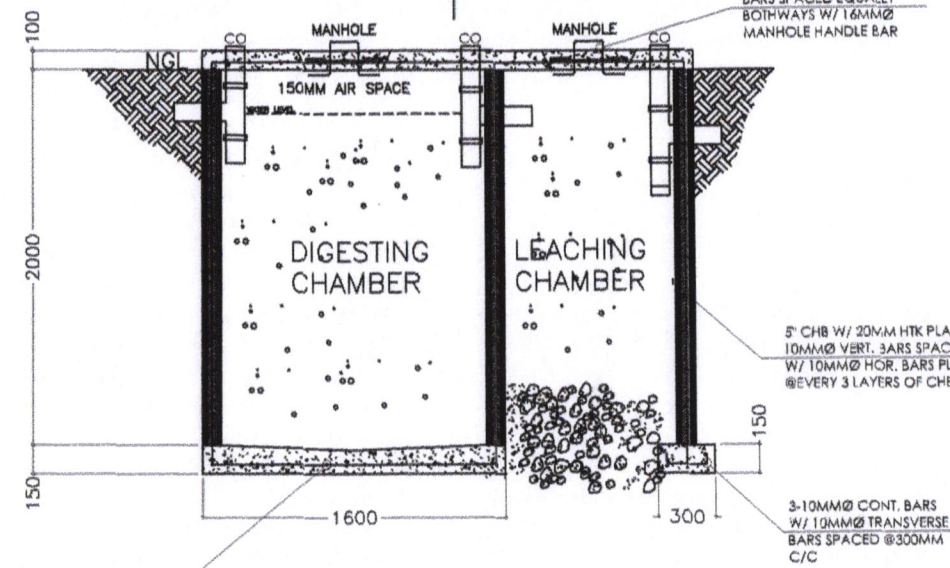
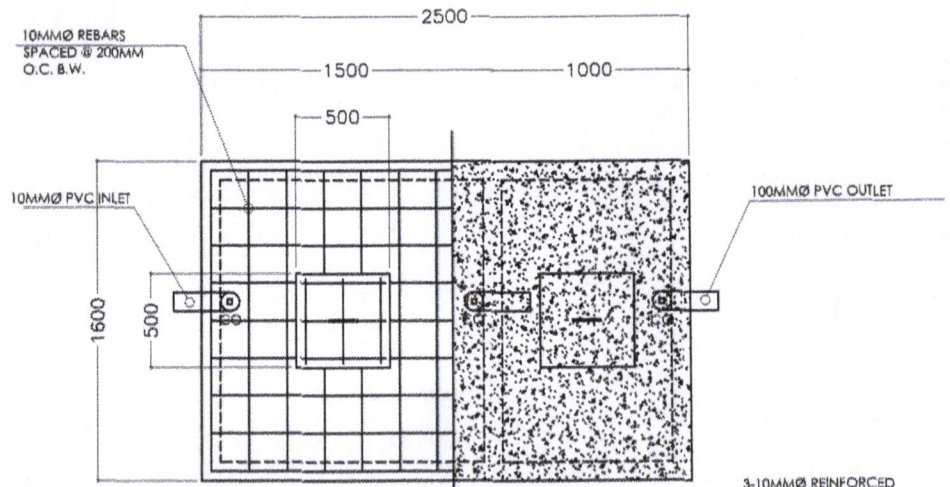
DRAWN BY:  
ROY M. HUBILLA  
ENGINEERING AIDE

RECOMMENDING APPRVL:  
ROEL D. DOMER, C.E./RMP  
CITY ENGINEER

APPROVED BY:  
HON. MA. ESTER E. HAMOR  
CITY MAYOR

SHEET CONTENT:  
AS - SHOWN

SHEET NO.  
S - 02



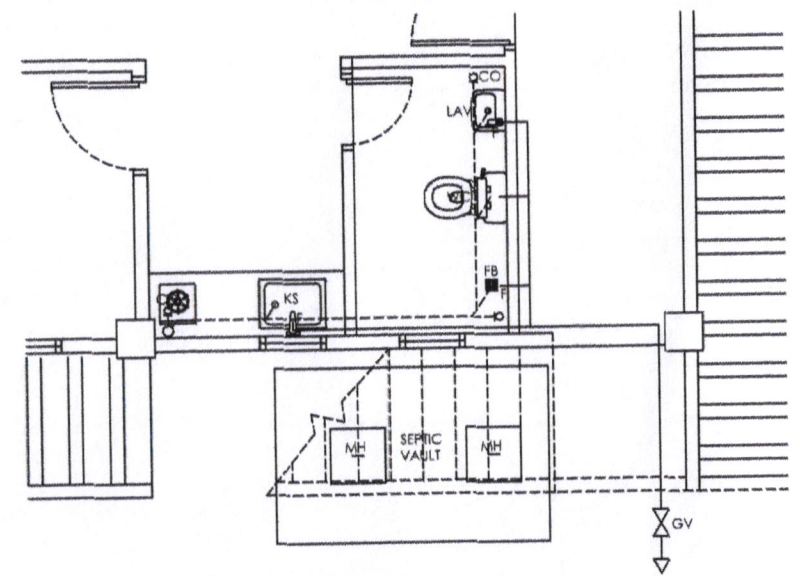
SEPTIC VAULT PLAN & SECTION  
SCALE N.T.S.

LEGEND:


- PT BLADDER/PNEUMATIC TANK
- E ELECTRIC MOTOR
- P PUMP
- U UNION PATENTE
- FTV FOOT VALVE
- FV FLOAT VALVE
- PP PRIMING PORT
- CB CATCH BASIN
- CDP CONCRETE DRAIN PIPE
- CV CHECK VALVE
- HB HOSE BIBB
- FD FLOOR DRAIN
- PPR-CWL POLYPROPYLENE-COLD WATER LINE
- PPR-CWR POLYPROPYLENE-COLD WATER RISER
- GV GATE VALVE
- MH MANHOLE
- PVCDS POLYVINYL CHLORIDE DOWNSPOUT
- PVCDP POLYVINYL CHLORIDE DRAIN PIPE
- CO CLEANOUT
- PVCSP POLYVINYL CHLORIDE SOIL PIPE
- PVCVAC POLYVINYL CHLORIDE VENT ACROSS CEILING
- PVCVP POLYVINYL CHLORIDE VENT PIPE
- PVCVS POLYVINYL CHLORIDE VENT STACK
- PVCVTR/W POLYVINYL CHLORIDE VENT THROUGH ROOF/WALL
- PVCWP POLYVINYL CHLORIDE WASTE PIPE
- PVCWS POLYVINYL CHLORIDE WASTE STACK
- RD ROOF DRAIN
- UD URINAL DRAIN
- WC WATER CLOSET
- LAV LAVATORY
- KS KITCHEN SINK

PLUMBING NOTES:

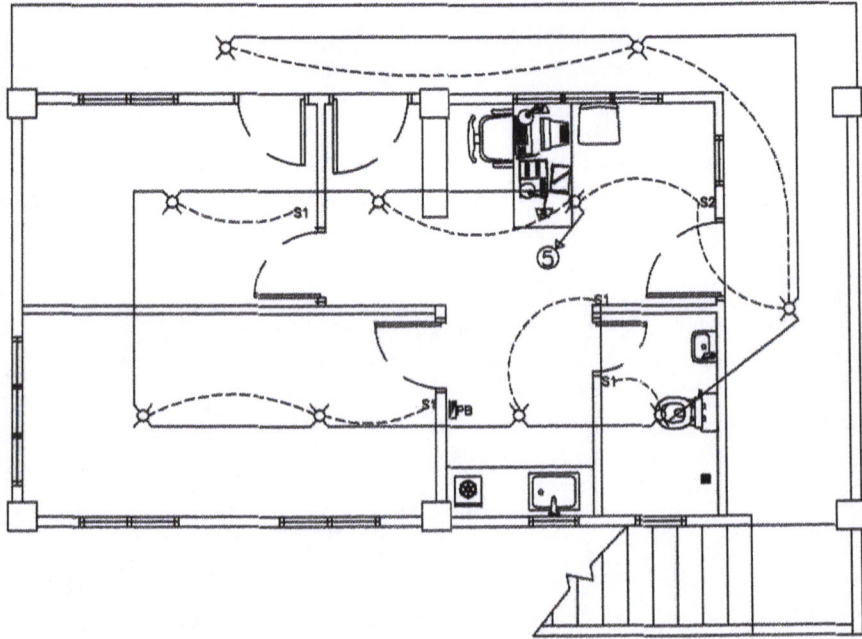
1. GRADES OF HORIZONTAL PIPINGS  
RUN ALL HORIZONTAL PIPINGS IN PERFECT ALIGNMENT AND AT A FORM GRADE NOT LESS THAN TWO PERCENT (2%)
2. CHANGE IN DIRECTION  
ALL CHANGE IN DIRECTION SHALL BE MADE BY APPROPRIATE USE OF FORTY-FIVE DEGREES (45°) WYES, LONG SWEEP QUARTER BEND, SIXTY-EIGHT OR SIXTEENTH BEND, WHEN THE CHANGE OF FLOW IS FROM HORIZONTAL TO VERTICAL, A SINGLE BEND 1/2 BEND COMBINATION MAY BE USED ON VERTICAL STACKS, AND SHORT QUARTER BENDS MAY BE USED IN VENT PIPES
3. PROHIBITED FITTINGS  
NO DOUBLE HUB OR TEE BRANCH SHALL BE USED ON HORIZONTAL SOIL AND WASTE LINES, THE DRILLINGS AND TAPPINGS OF HOUSE DRAIN, WASTE OR VENT PIPES AND USE OF SADDLE HUB AND BEND ARE PROHIBITED
4. PIPE CLEAN-OUTS  
CLEAN-OUTS ARE REQUIRED UNDER THE FOLLOWING CONDITIONS:  
a.) EVERY CHANGE OF HORIZONTAL DIRECTION EXCEEDING TWENTY-TWO AND ONE-HALF DEGREES (22 1/2°)  
b.) ONE AND ONE-HALF METERS (1.50M) INSIDE THE PROPERTY LINES BEFORE THE HOUSE DRAINAGE CONNECTION  
c.) EVERY FIFTEEN METERS (15.0M) IN HORIZONTAL RUN OF PIPES  
d.) AT THE END OF ANY HORIZONTAL PIPE LINES
5. THE DIGESTION CHAMBER OF SEPTIC VAULT MUST BE WATERPROOFED
6. NOT LESS THAN 0.30METERS OF AIR SPACE MUST BE LEFT BETWEEN THE TOP OF THE SEWAGE AND THE UNDER PART OF VAULT ROOF SLAB
7. NO SEPTIC VAULT SHALL BE CONSTRUCTED UNDER THE BUILDING
8. ALL PLUMBING WORKS SHALL BE UNDER THE SUPERVISION OF A LICENSED MASTER PLUMBER AND A LICENSED PLUMBING CONTRACTOR



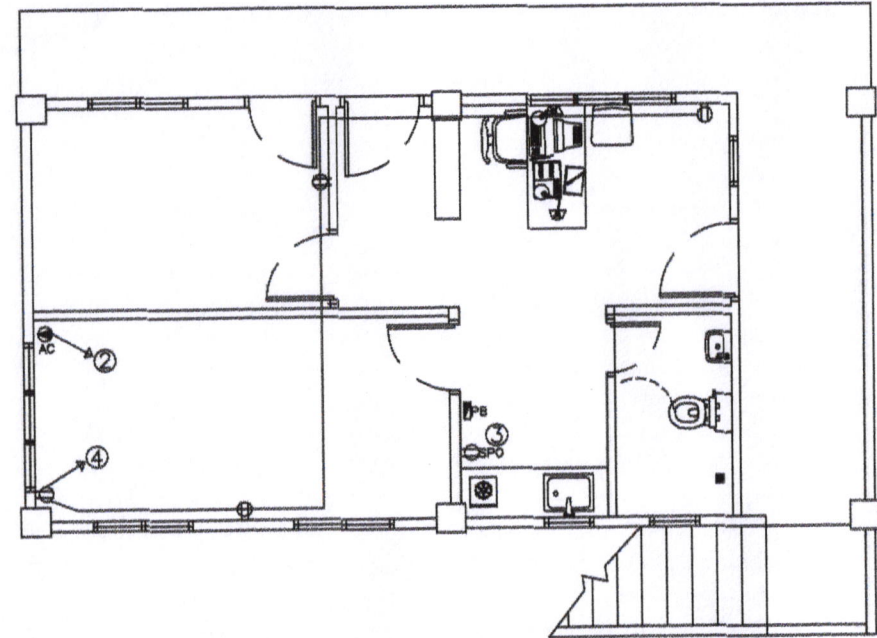
PLUMBING LAYOUT  
SCALE N.T.S.

 <p><b>SORSOGON CITY</b> <b>CITY ENGINEER'S OFFICE</b></p>	PROJECT TITLE:	DRAWN BY:	RECOMMENDING APPRVL:	APPROVED BY:	SHEET CONTENT:	SHEET NO.
	CONSTRUCTION OF RESCUE/SEA PATROL BOAT & BOAT SHED W/ EMBARKATION/LAUNCHING DECK - PHASE II	ROY M. HUBILLA ENGINEERING AIDE	ROEL D. POMER, C.E./RMP CITY ENGINEER	HON. MA. ESTER E. HAMOR CITY MAYOR	AS - SHOWN	P - 01
	LOC: BACON PORT & BRGY. TALISAY PIER, SORSOGON CITY					

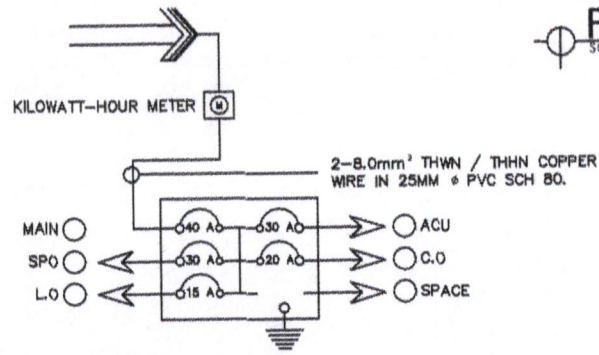





⊕ LIGHTING LAYOUT  
SCALE N.T.S.



⊕ POWER LAYOUT  
SCALE N.T.S.



⊕ RISER DIAGRAM  
SCALE N.T.S.

 <p>SORSOGON CITY CITY ENGINEER'S OFFICE</p>	PROJECT TITLE:	DRAWN BY:	RECOMMENDING APPRVL:	APPROVED BY:	SHEET CONTENT:	SHEET NO.
	CONSTRUCTION OF RESCUE/SEA PATROL BOAT & BOAT SHED W/ EMBARKATION/LAUNCHING DECK - PHASE II	ROY M. HUBILLA ENGINEERING AIDE	ROEL D. DOMER, C.E./RMP CITY ENGINEER	HON. MA. ESTER E. HAMOR CITY MAYOR	AS - SHOWN	E - 01
	LOC: BACON PORT & BRGY. TALISAY PIER, SORSOGON CITY					